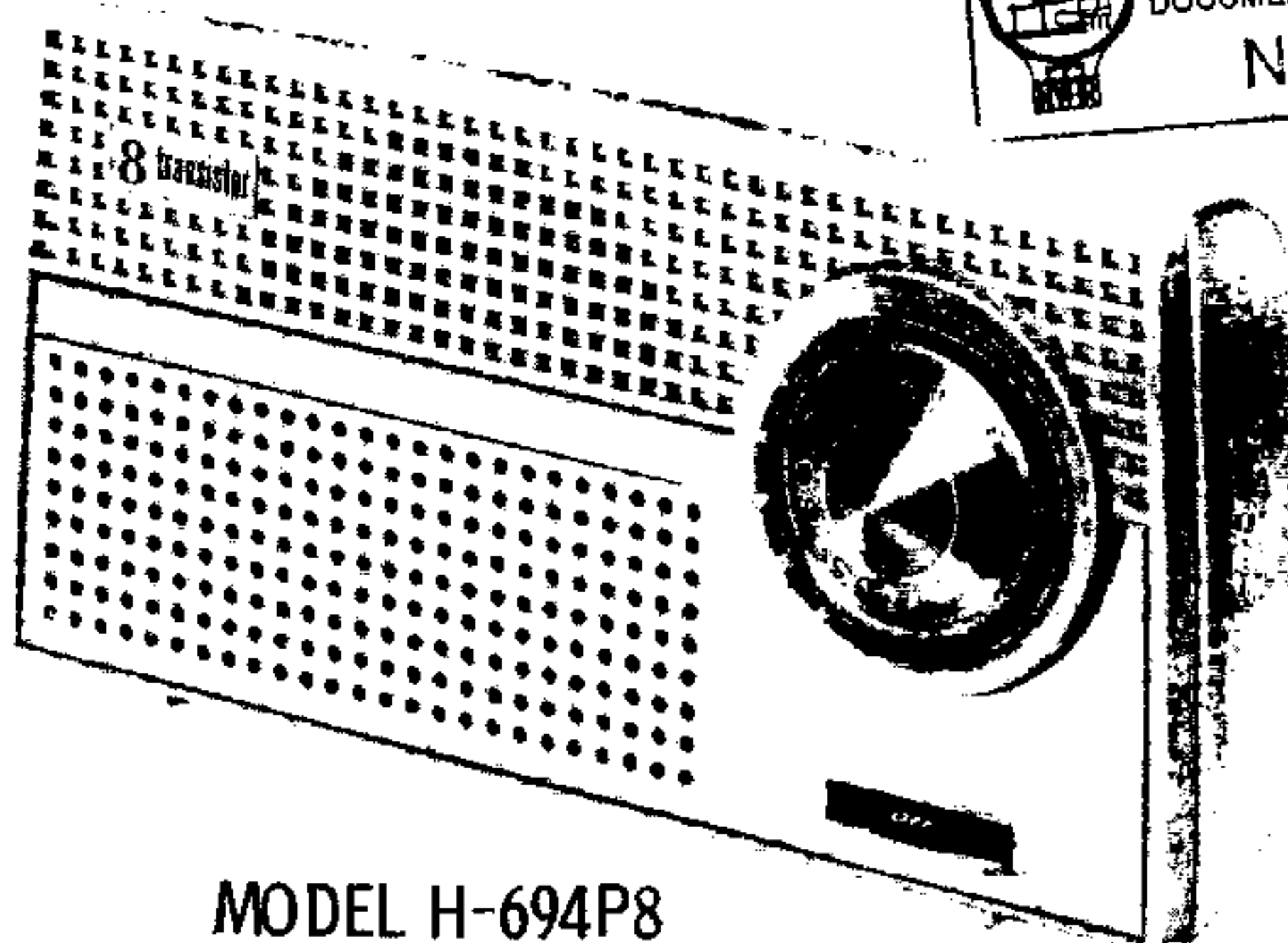
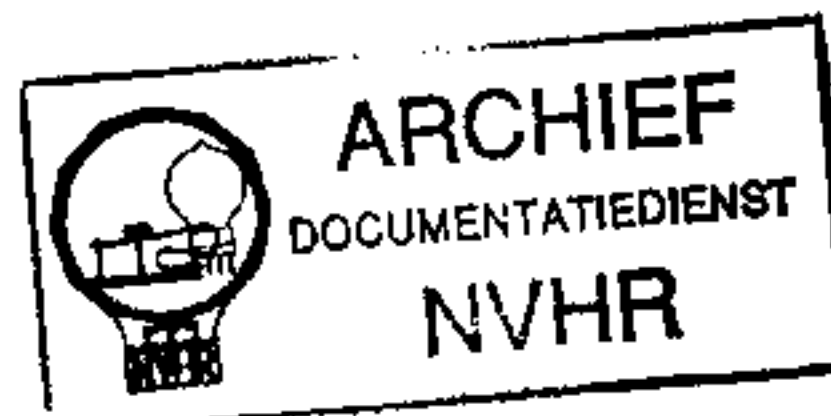




Met dank aan Jef Bos

Ned. Ver. v. Historie v/d Radio



MODEL H-694P8

TRADE NAME	Westinghouse Models H-693P8, H-694P8, H-695P8 (CH. V-2278-5)		
MANUFACTURER	Westinghouse Electric Corp., Metuchen, N. J		
TYPE SET	Battery Operated Portable Transistorized AM Receiver		
POWER SUPPLY	9 Volts DC	RATING	6.6 MA@9 Volts DC (No Signal, Min. Volume)
TUNING RANGE—BROADCAST	540 — 1625KC		9.5 MA@9 Volts DC (Signal, Normal Volume)

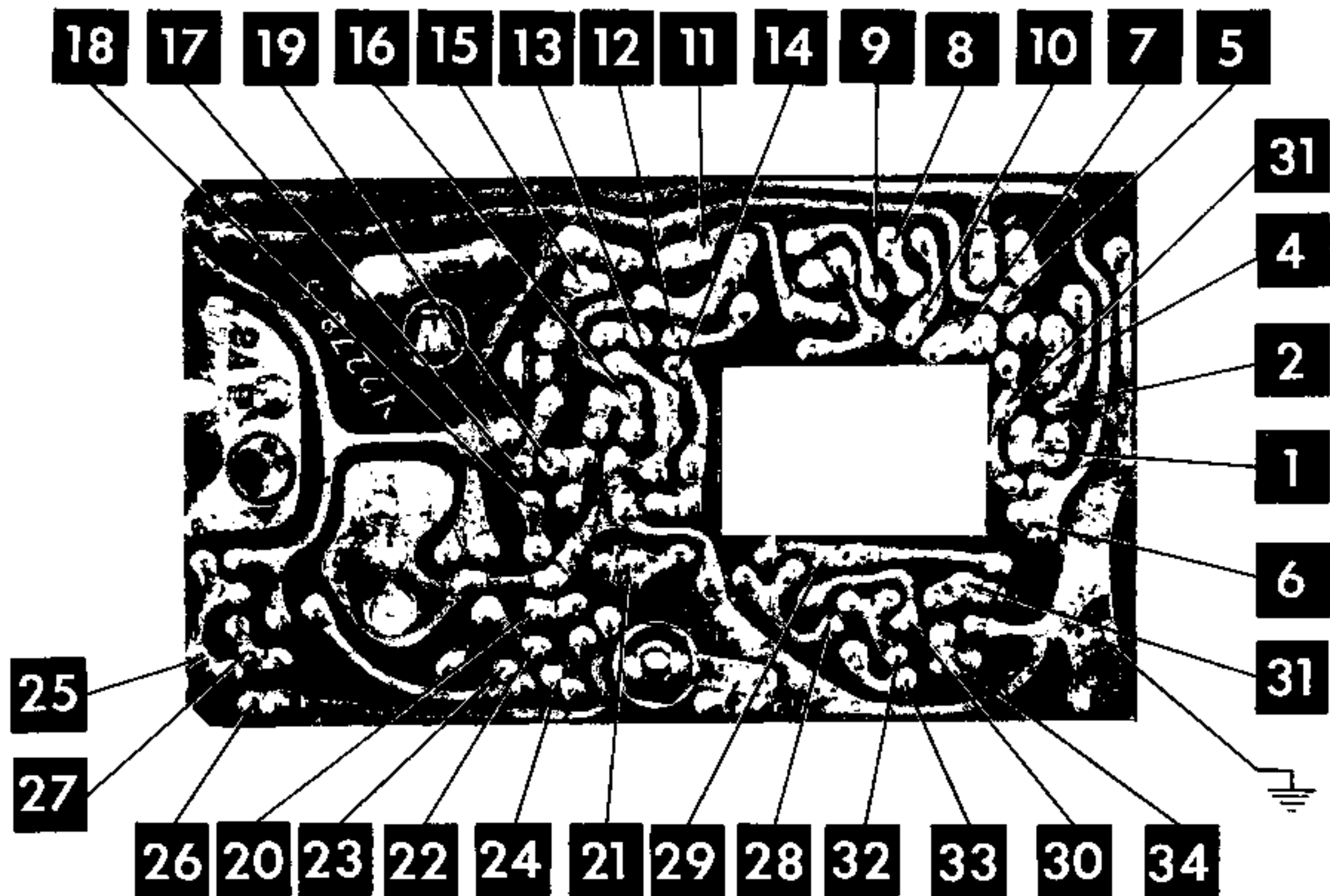
## ALIGNMENT INSTRUCTIONS

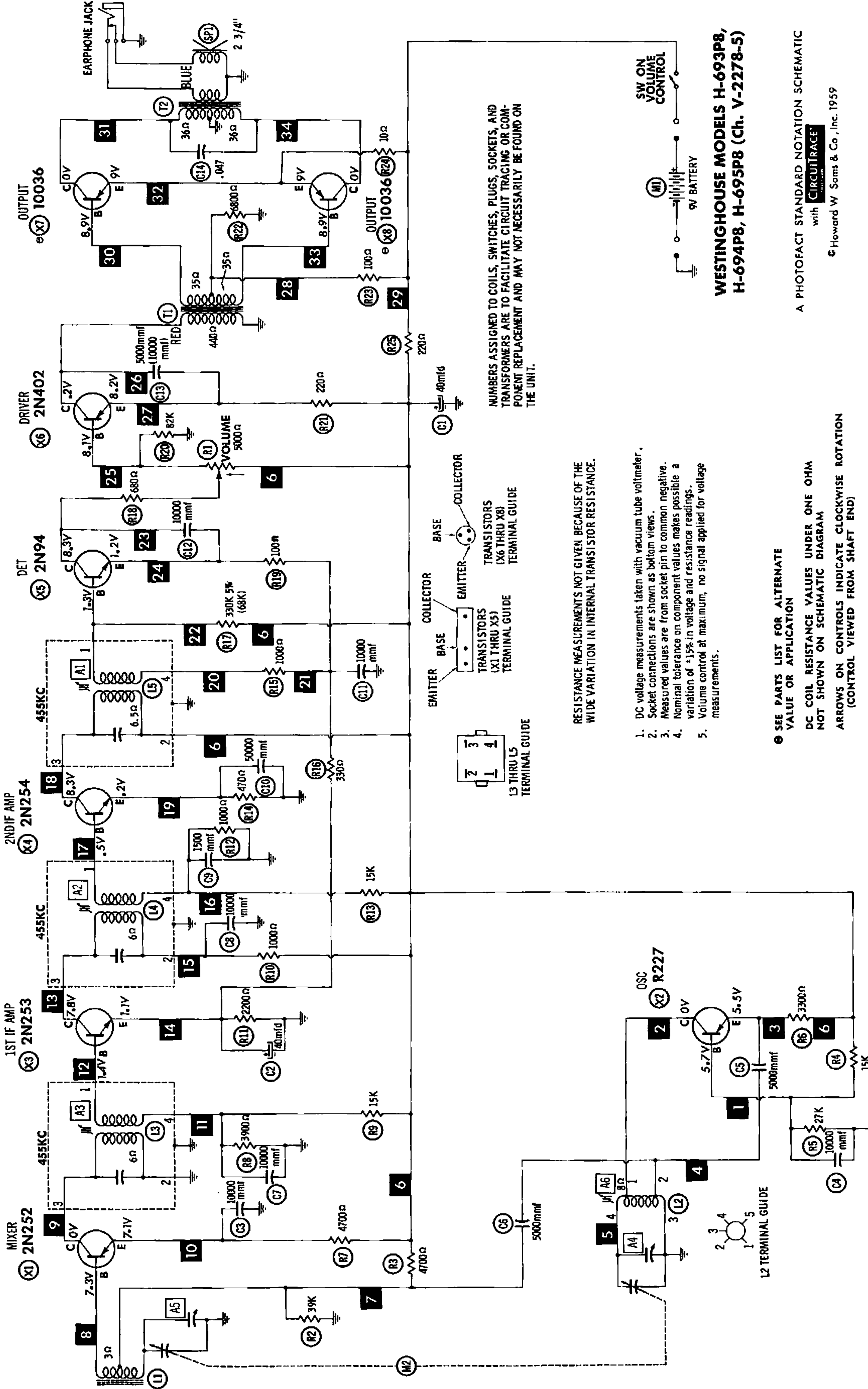
ALIGNMENT INSTRUCTIONS—READ CAREFULLY BEFORE ATTEMPTING ALIGNMENT						
Volume control should be at maximum position. Output of signal generator should be no higher than necessary to obtain an output reading.						
Suggested alignment tools:						
		A1, A2, A3.....	GENERAL CEMENT #8607, 9291			
			WALSCO #2520, 2522, 2524, 2537			
		A4, A5.....	GENERAL CEMENT #5004, 5008, 5009			
			WALSCO #2520			
		A6.....	GENERAL CEMENT #9440			
DUMMY ANTENNA	SIGNAL GENERATOR COUPLING	SIGNAL GENERATOR FREQUENCY	RADIO DIAL SETTING	OUTPUT METER	ADJUST	REMARKS
1.	Loop	455KC (400% Mod.)	Tuning gang fully closed.	Across voice coil	A1, A2, A3	Fashion loop of several turns of wire and radiate signal into loop of receiver. Adjust for maximum output.
2.	"	1625KC	Tuning gang fully open	"	A4	"
3.	"	1400KC	1400KC Signal	"	A5	"
4.	"	600KC	600KC	"	A6	If necessary, adjust for maximum output. Repeat Steps 2, 3, & 4.

### HOWARD W. SAMS & CO., INC. Indianapolis 6, Indiana

The listing of any available replacement part herein does not constitute in any case a recommendation, warranty or guaranty by Howard W. Sams & Co., Inc., as to the quality and suitability of such replacement part. The numbers of these parts have been compiled from information furnished to Howard W. Sams & Co., Inc., by the manufacturers of JF393

the particular type of replacement part listed. Reproduction or use, without express permission, of editorial or pictorial content, in any manner, is prohibited. No patent liability is assumed with respect to the use of the information contained herein. © 1959 Howard W. Sams & Co., Inc., Indianapolis 6, Indiana. Printed in U.S. of America





NUMBERS ASSIGNED TO COILS, SWITCHES, PLUGS, SOCKETS, AND TRANSFORMERS ARE TO FACILITATE CIRCUIT TRACING OR COMPONENT REPLACEMENT AND MAY NOT NECESSARILY BE FOUND ON THE UNIT.

RESISTANCE MEASUREMENTS NOT GIVEN BECAUSE OF THE WIDE VARIATION IN INTERNAL TRANSISTOR RESISTANCE.

1. DC voltage measurements taken with vacuum tube voltmeter.
2. Socket connections are shown as bottom views.
3. Measured values are from socket pin to common negative.
4. Nominal tolerance on component values makes possible a variation of ±15% in voltage and resistance readings.
5. Volume control at maximum, no signal applied for voltage measurements.

SEE PARTS LIST FOR ALTERNATE VALUE OR APPLICATION

DC COIL RESISTANCE VALUES UNDER ONE OHM NOT SHOWN ON SCHEMATIC DIAGRAM

ARROWS ON CONTROLS INDICATE CLOCKWISE ROTATION (CONTROL VIEWED FROM SHAFT END)

**WESTINGHOUSE MODELS H-693P8, H-694P8, H-695P8 (Ch. V-2278-5)**

A PHOTOFACIT STANDARD NOTATION SCHEMATIC

with **CIRCUITRACE**

© Howard W Sams & Co., Inc. 1959

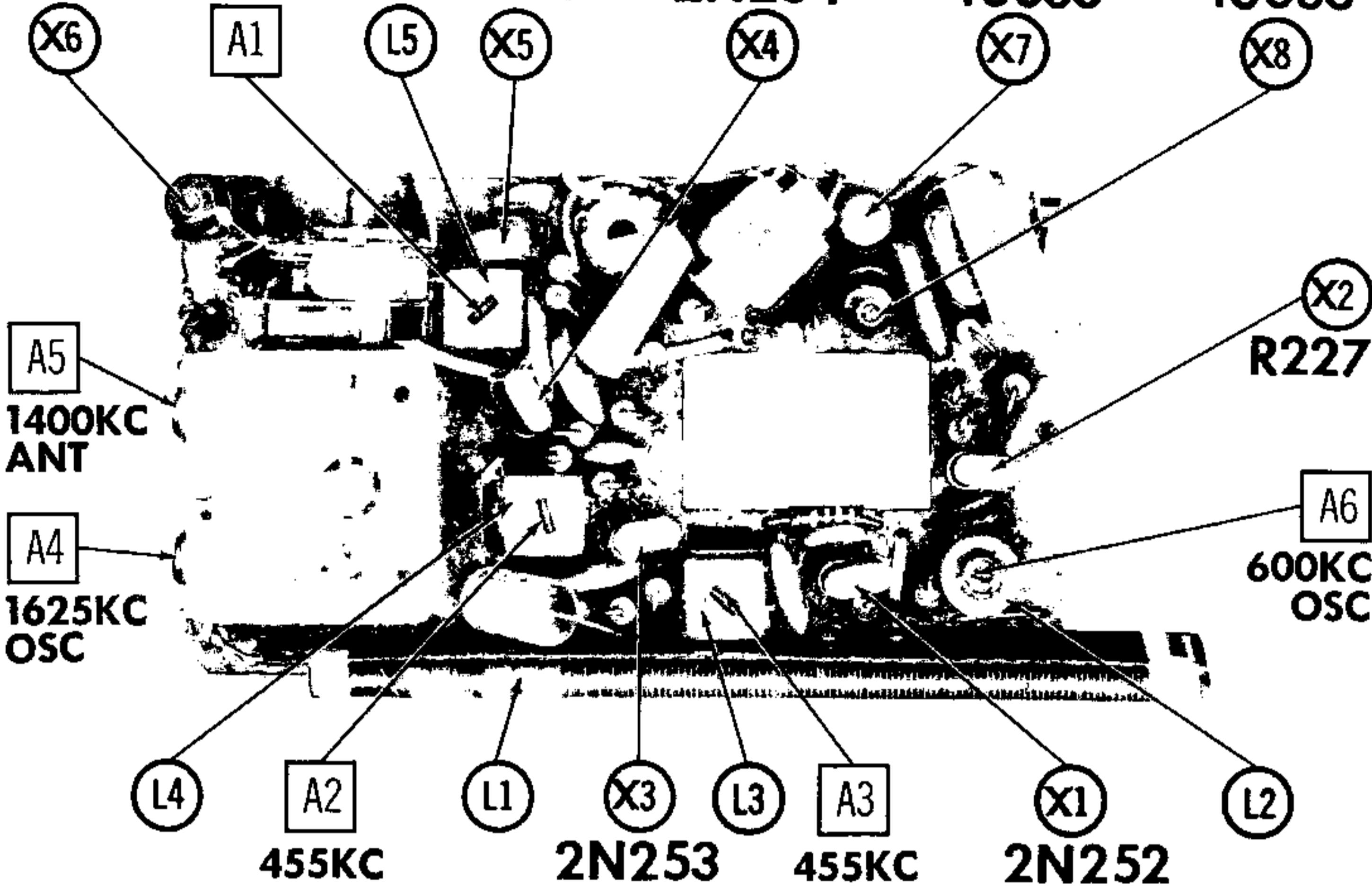
2N402 455KC

2N94

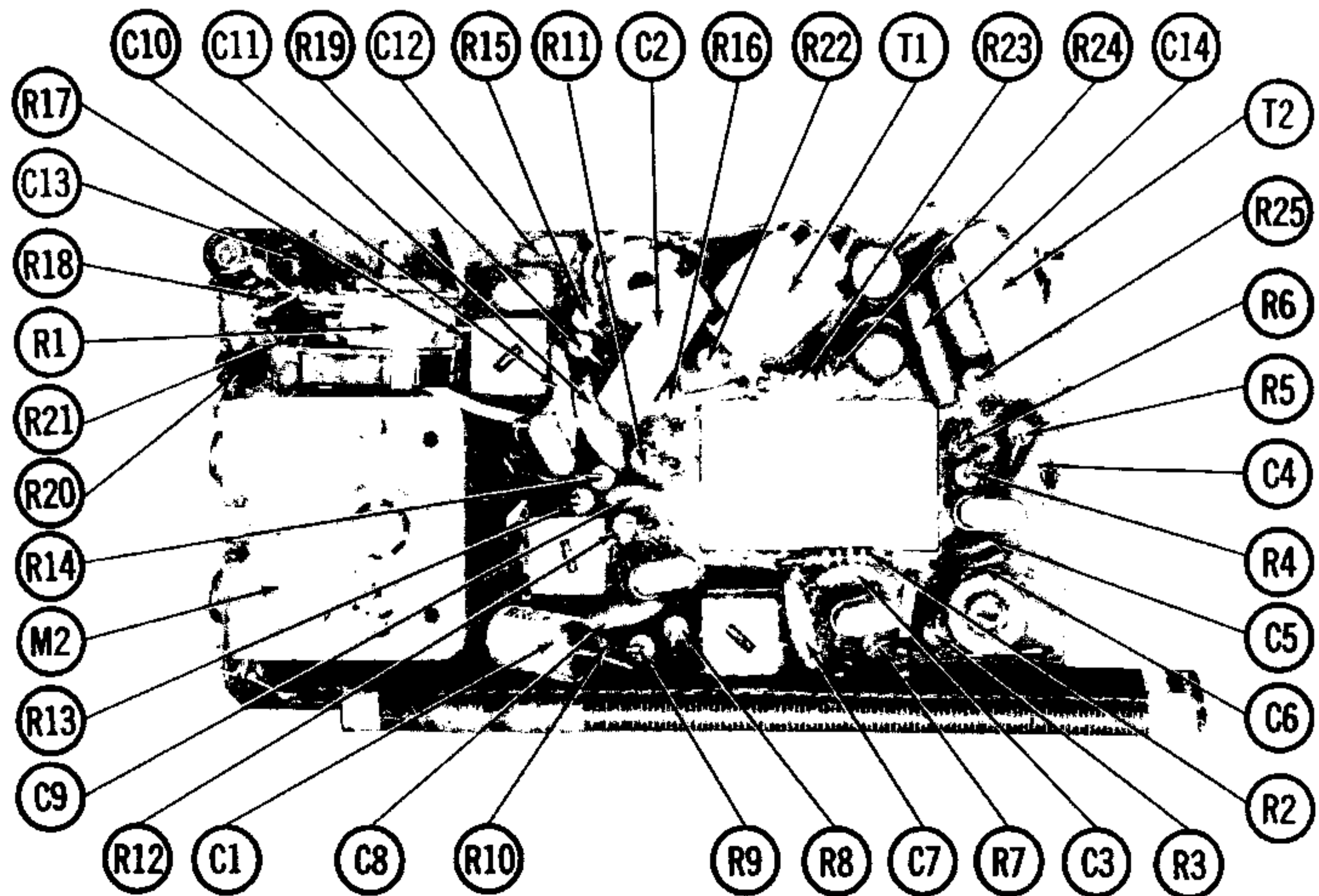
2N254

10036

10036



CHASSIS - TOP VIEW



CHASSIS - TOP VIEW

## TRANSISTORS

ITEM No.	ORIG. TYPE	USE	REPLACEMENT DATA				NOTES
			CBS PART No.	RCA PART No.	RAYTHEON PART No.	SYLVANIA PART No.	
X1	2N252	Mixer		2N411	2N488		PNP
X2	R-227	Oscillator		2N411	2N488		PNP
X3	2N253	1st IF Amp.				2N94A	NPN
X4	2N254	2nd IF Amp.				2N94A	NPN
X5	2N94	Detector				2N94	NPN
X6	2N402	Driver		2N408	2N362	2N217	PNP
X7	10036 ①	Output		2N408	2N632	2N270	PNP Matched
X8	10036 ①	Output		2N408	2N632	2N270	PNP Pair

① Some versions may use type 10037, 10038, 10039.

## ELECTROLYTIC CAPACITORS

ITEM No.	RATING		REPLACEMENT DATA						NOTES
	CAP.	VOLT.	Westinghouse PART No.	AEROVOX PART No.	CORNELL DUBILIER PART No.	MALLORY PART No.	PYRAMID PART No.	SPRAGUE PART No.	
C1	40	10	218V012H01	PWE10040	EC50-10	TT15X40	ML40-15	TE-1119	
C2	40	3	218V012H02	PWE3040	EC40-3	TT3X40	ML40-6	TE-1053	

## FIXED CAPACITORS

Capacity values given in the rating column are in mfd. for Paper Capacitors, and in mmfd. for Mica and Ceramic Capacitors.

ITEM No.	RATING	REMARKS	REPLACEMENT DATA					
			AEROVOX PART No.	CENTRALAB PART No.	CORNELL-DUBILIER PART No.	ELMENCO PART No.	MALLORY PART No.	SPRAGUE PART No.
C3	10000		BPD-01	DDM-103	H-05S1	CCD-103	TA-110	TG-S10
C4	10000		BPD-01	DDM-103	H-05S1	CCD-103	TA-110	TG-S10
C5	5000		BPD-005	DDM-502	H-05D5	CCD-502	TA-250	TG-D50
C6	5000		BPD-005	DDM-502	H-05D5	CCD-502	TA-250	TG-D50
C7	10000		BPD-01	DDM-103	H-05S1	CCD-103	TA-110	TG-S10
C8	10000		BPD-01	DDM-103	H-05S1	CCD-103	TA-110	TG-S10
C9	1500		BPD-0015	DD-152	LI0D15	CCD-152	B-215	5HK-D15
C10	50000		BPD-05	DDA-503	H-05S5	IDP-2-503	TA-150	TG-S50
C11	10000		BPD-01	DDM-103	H-05S1	CCD-103	TA-110	TG-S10
C12	10000		BPD-01	DDM-103	H-05S1	CCD-103	TA-110	TG-S10
C13	5000	(10000) #	BPD-005	DDM-502	H-05D5	CCD-502	TA-250	TG-D50
C14	.047 100V		V84C2847	DDA-503	DJ2S5	IDP-2-473	GTM-2147	91D4739282

# Alternate

## CONTROLS

ITEM No.	RATING		REPLACEMENT DATA					INSTALLATION NOTES
	RESISTANCE	WATTS	Westinghouse PART No.	CENTRALAB PART No.	CLAROSTAT PART No.	IRC PART No.	MALLORY PART No.	
R1	5000Ω	1/4	270V024H01					Volume & Switch

# DESCRIPTIONS

## RESISTORS

All wattages 1/2 watt, or less, unless otherwise listed.

ITEM No.	RATING	REMARKS
R2	39K	
R3	4700Ω	
R4	15K	
R5	27K	
R6	3300Ω	
R7	4700Ω	
R8	3900Ω	
R9	15K	

ITEM No.	RATING	REMARKS
R10	1000Ω	
R11	2200Ω	
R12	1000Ω	
R13	15K	
R14	470Ω	
R15	1000Ω	
R16	330Ω	
R17	330K 5%	

ITEM No.	RATING	REMARKS
R18	680Ω	
R19	100Ω	
R20	82K	
R21	220Ω	
R22	6800Ω	
R23	100Ω	
R24	10Ω	
R25	220Ω	

## COILS (RF-IF)

ITEM No.	USE	REPLACEMENT DATA					NOTES
		Westinghouse PART No.	Gramer PART No.	Meissner PART No.	Merit PART No.	Miller PART No.	
L1	Loopstick	310V012H04					
L2	Osc. Coil	230V075H01					
L3	1st IF Trans.	235V014H01					
L4	2nd IF Trans.	235V014H01					
L5	3rd IF Trans.	235V014H02					

## TRANSFORMER (DRIVER)

ITEM No.	TURNS RATIO		REPLACEMENT DATA					NOTES
	PRI.	SEC.	Westinghouse PART No.	Halldorson PART No.	Merit PART No.	Stancor PART No.	Thordarson PART No.	
T1	2.5	1	430V024H02					

## TRANSFORMER (AUDIO OUTPUT)

ITEM No.	IMPEDANCE		REPLACEMENT DATA						NOTES
	PRI.	SEC.	Westinghouse PART No.	Halldorson PART No.	Merit PART No.	Ram PART No.	Stancor PART No.	Thordarson PART No.	
T2	1450Ω CT	12Ω	430V025H02						

## SPEAKER

ITEM No.	TYPE			REPLACEMENT DATA		NOTES
	SIZE	FIELD	V. C. IMP.	Westinghouse PART No.	QUAM PART No.	
SP1	2 3/4"	PM	12Ω	570V004H01		

# PARTS LIST AND DESCRIPTIONS (Continued)

## BATTERIES

ITEM No.	VOLTAGE	Westinghouse PART No.	REPLACEMENT DATA				NOTES	
			BURGESS		EVEREADY			MALLORY
			"A"	"B"	"A"	"B"	"A"	"B"
M1	9V			P6M		228		MI600

## MISCELLANEOUS

ITEM No.	PART NAME	Westinghouse PART No.	NOTES
M2	Tuning Cap	330V005H05	2 Gang

## CABINETS & CABINET PARTS

(When Ordering Cabinets & Cabinet Parts, Specify Model, Chassis & Color)

NAME	PART NO.	DESCRIPTION
Knob	550V112H01	Tuning
Knob	550V017H01	Volume
Cabinet	513V025H04	H-693P8
Cabinet	513V025H05	H-694P8
Cabinet	513V025H06	H-695P8

## WIRING DATA

General-use Unshielded Hook-up Wire ..... Use BELDEN No. 8530 (Solid) Available in Ten Colors  
8524 (Stranded) Available in Ten Colors

## DISASSEMBLY INSTRUCTIONS

### DISASSEMBLY

1. Remove tuning knob. (Loop string under knob and pull up.)
2. Loosen screw on cabinet back. Remove back.
3. Remove screw from tuning gang end of printed board.
4. Slide printed board toward tuning gang end of cabinet to free speaker bracket from opposite end of cabinet.
5. Raise speaker end of board up and away from cabinet. Slide printed board from cabinet.