

R	1	2	3	4	5	53	7	9	10	11	12	13	14	16	17	18	19	20	21	22	23	24	25	26	27	28	29	30	31	32	33	34	35	36	37	38	39	40	41	42	43	44	45	46	47	48	49	50	R		
C	2	3	4	5	6	7	8	9	10	11	12	13	14	15	16	17	18	19	20	21	22	23	24	25	26	27	28	29	30	31	32	33	34	35	36	37	38	39	40	41	42	43	44	45	46	47	48	49	50	C	
Schalter	S1	S2	S3	S4	S5	S6	S7	S8	S9	S10	S11	S12	S13	S14	S15	S16	S17	S18	S19	S20	S21	S22	S23	S24	S25	S26	S27	S28	S29	S30	S31	S32	S33	S34	S35	S36	S37	S38	S39	S40	S41	S42	S43	S44	S45	S46	S47	S48	S49	S50	Schalter

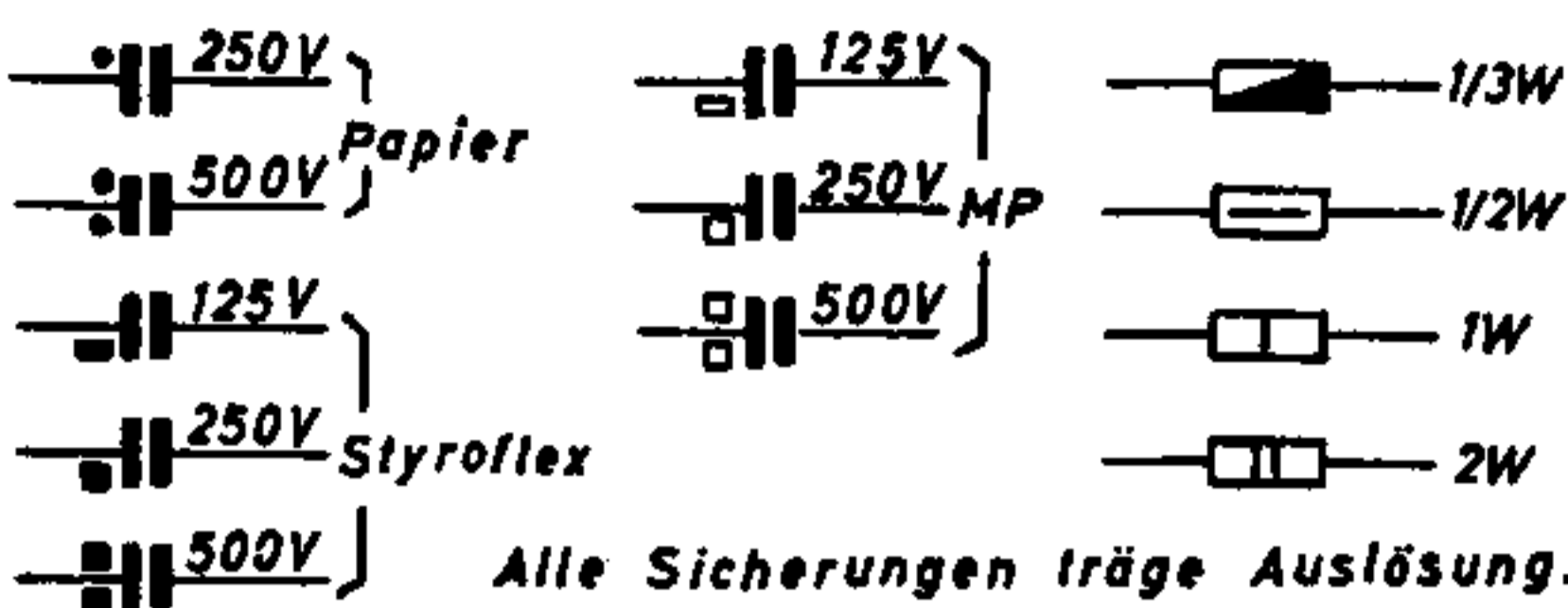
Spannungen gemessen mit Röhrenvoltmeter
10 MΩ gegen Masse. Gezeichnete Stellung:
Wiedergabe

Voltages measured with VTVM (Ri=10 MΩ).

Switch position: *Reproduction*

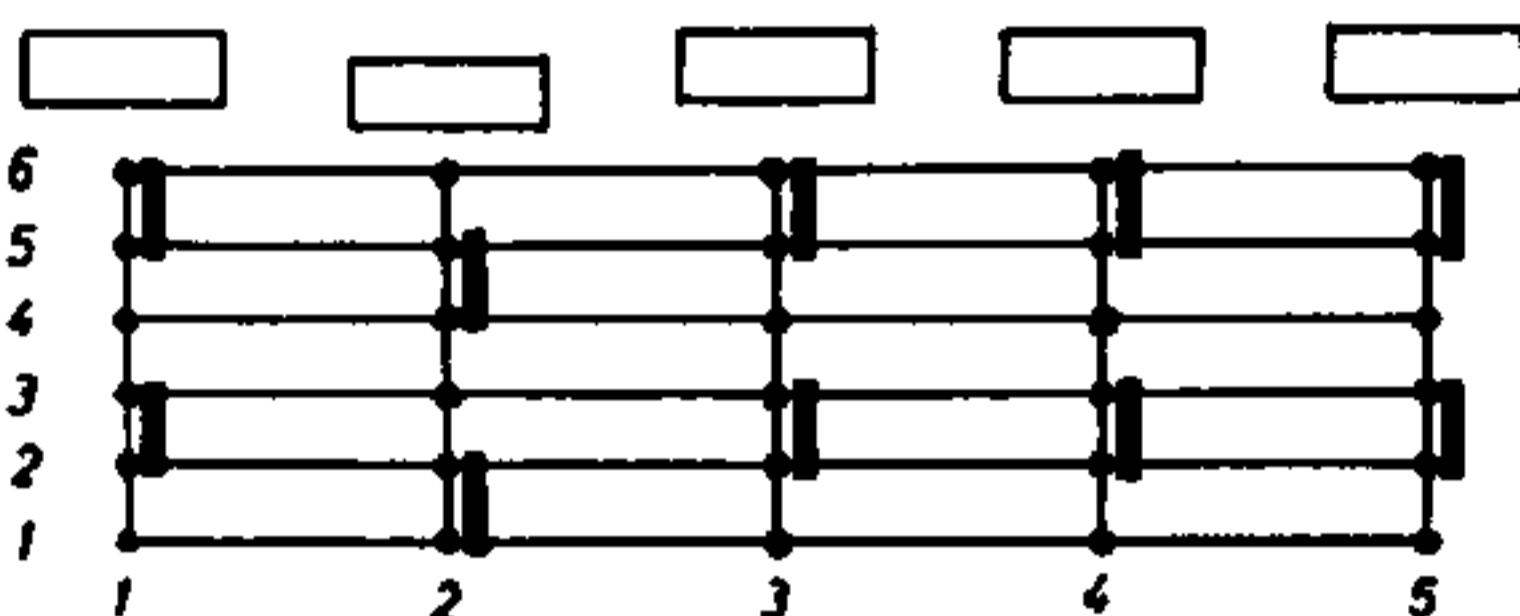
A = Aufnahme W = Wiedergabe

A = Recording W = Reproduction



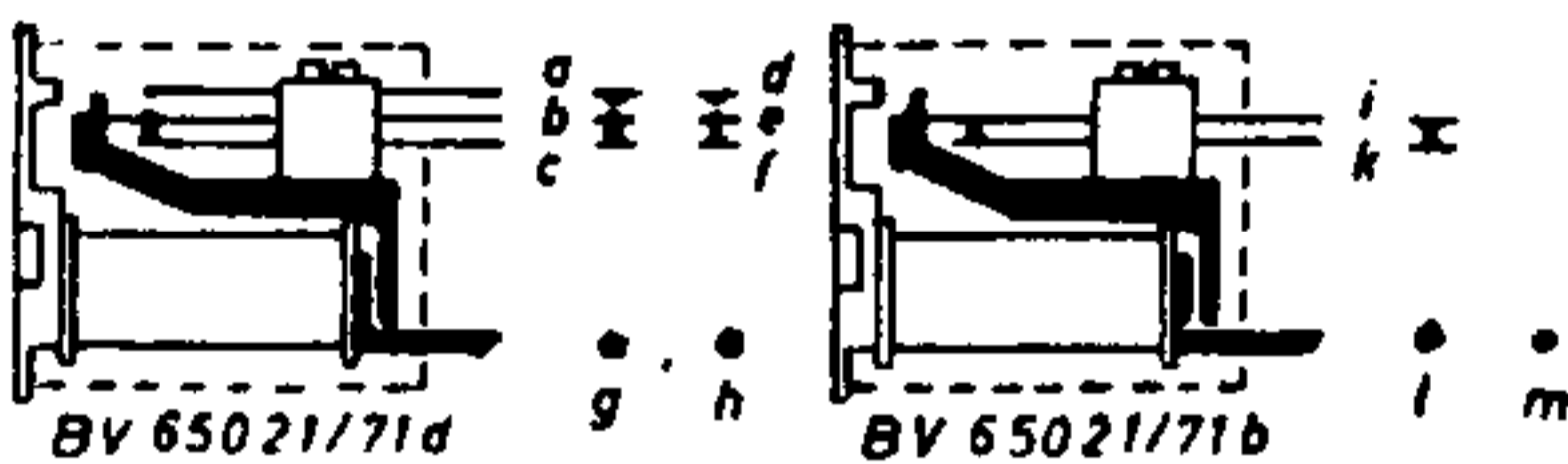
Alle Sicherungen träge Auslösung.
All fuses delayed action type.

Rücklauf Start Autom. Wiedg. Aufn. Vorlauf
Rewind Start Autom. Rep. Record. Fast Forw.



Beispiel: Start 2/1 - 2/2, 2/4 - 2/5 geschlossen

Example: Start 2/1 - 2/2, 2/4 - 2/5 closed

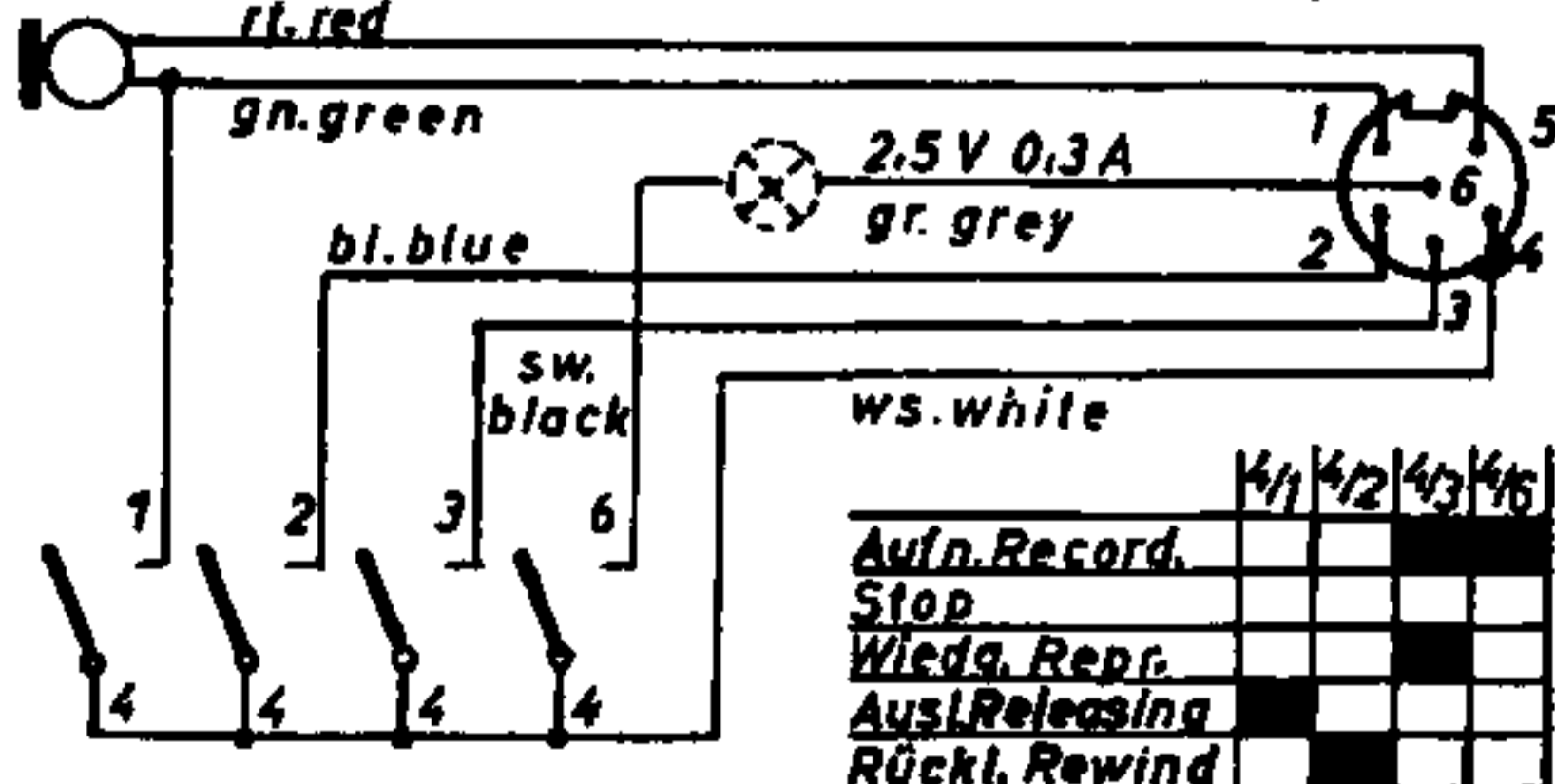


Relay I. Contact a/b and d/e in rest position open, b/c and e/f closed!

Relay II. Contact i/k in rest position closed!

Schalter in Ruhestellung, Switch in rest position		
S1	Schnellstop	Pause Control
S3	Schalter an der Stoptaste	Switch at the stop button unit
S4	Schalter am Vorlauf-Rücklaufmagnet	Switch at the fast forward and rewind magn.
S5 S7	Schalter am Andruckarm	Switch at the pressing lever

Mikrofonschaltung Microphone switch diagram



UNIVERSAL