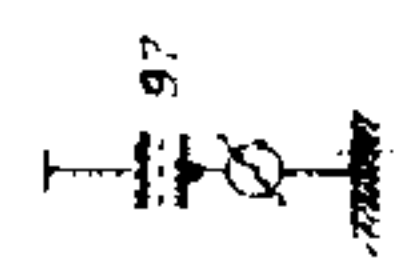
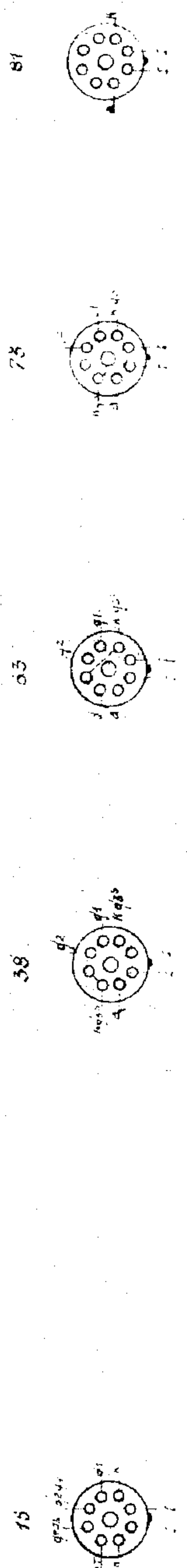
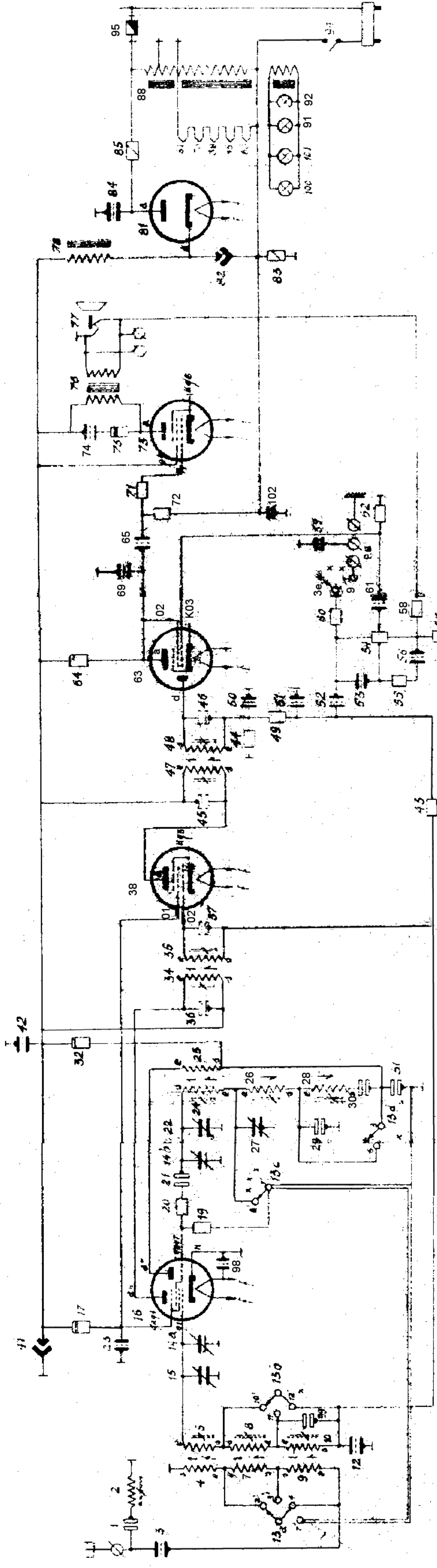


951 A



Condensateurs - 140

Rep.	Value	Tension
<u>Ceramiques</u>		
24	50	500/1500V
30	200	"
31	390	"
35	150	"
37	"	"
45	"	"
46	"	"
<u>Ceramiques ou Mica</u>		
1	50	250/750V
21	"	"
69	500	"
50	150	"
99	8	"
<u>Electrolytiques</u>		
41	33 M	350/400V
82	"	"
<u>Papier</u>		
12	47 K	250/750V
51	150	"
52	22 K	"
53	100	"
56	15 K	"
61	M1	"
23	47 K	500/1500V
72	"	"
65	27 K	"
98	4 K7	"
59	22 K	"
3	470	1000/3000V
74	4 K7	"
84	"	"
97	20 K	"
102	20 K	"

Resistances

Rep.	Value	Dissipat.
<u>Carbone ou depot.</u>		
19	47 K	1/4 W
20	100	"
43	1 M	"
44	M1	"
49	47 K	"
55	15 K	"
57	47 K	"
58	270	"
60	41 M	"
62	10 M	"
71	10 K	"
72	1 M	"
64	M1	1/2 W
32	10 K	1 W
17	15 K	2 W
75	4 K7	"

Resistances bobinees

83	120	0,100 Ams
85	160	0,200

Resistances réglables

64	1 M	1/4 W
----	-----	-------

Lampes

Rep.	Designation	Rep.	Designation
16	ULH 41	73	UL 41
38	UF 41	81	UY 41
63	UAF 41	91/92	100/301 Ampoule u250

Legende

1K : 1000
 M1 : 100 000
 1M : 1 000 000

	13a			13b			13c	13d	13e	
	2	3	4	7	10	11	12	8	6	1
A										
CC	●				●			●		
PC		●				●			●	
GO			●				●			
PU				●						●