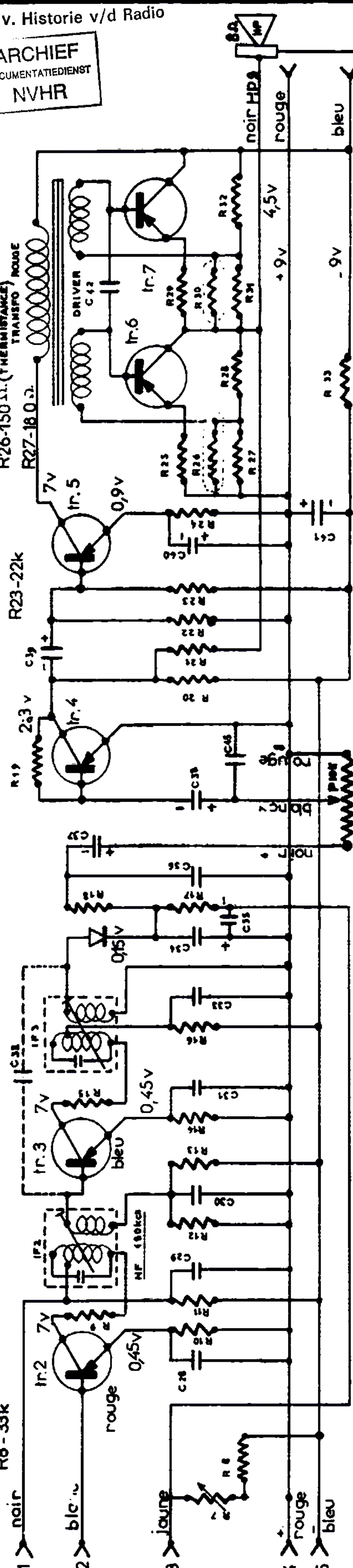




SYSTEME MOSTA TYPE MBS (IF-BF)

- R7 - 100k
- R8 - 33k
- R9 - 470 Ω
- R10 - 1k
- R11 - 22k
- R12 - 39k
- R13 - 47k
- R14 - 1k
- R15 - 470
- R16 - 470
- R17 - 68k
- R18 - 2,2k
- R19 - 220k
- R20 - 4,7k
- R21 - 33k
- R22 - 33k
- R23 - 22k
- R24 - 220 Ω
- R25 - 0,5 Ω
- R26 - 150 Ω (THERMISTANCE)
- R27 - 180 Ω
- R28 - 2,2k
- R29 - 0,5 Ω
- R30 - 150 Ω (THERMISTANCE)
- R31 - 160 Ω
- R32 - 2,2k
- R33 - 220 Ω



- C28 - 47nf
- C29 - 47nf
- C30 - 47nf
- C31 - 47nf
- C32 - 33pf
- C33 - 47nf
- C34 - 22nf
- C35 - 10yf
- C36 - 47nf
- C37 - 16yf
- C38 - 1,6yf
- C39 - 1,6yf
- C40 - 100f
- C41 - 100f
- C42 - 22nf

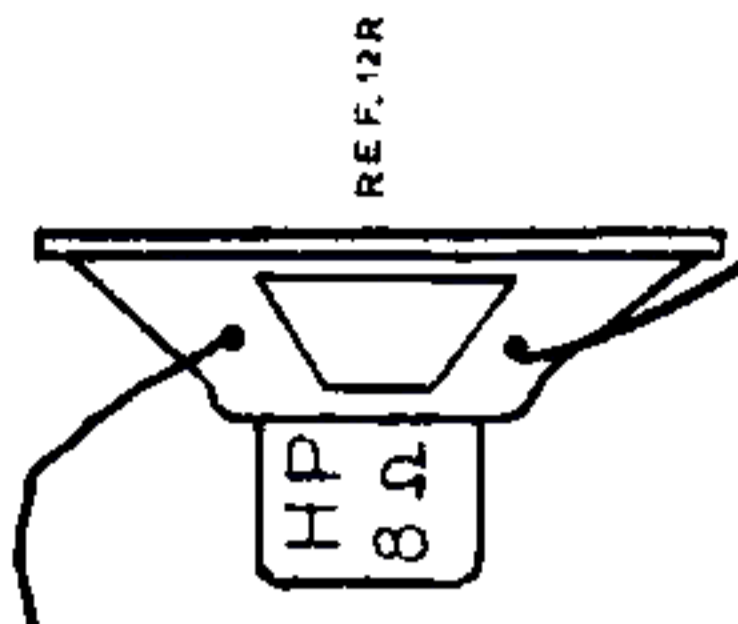
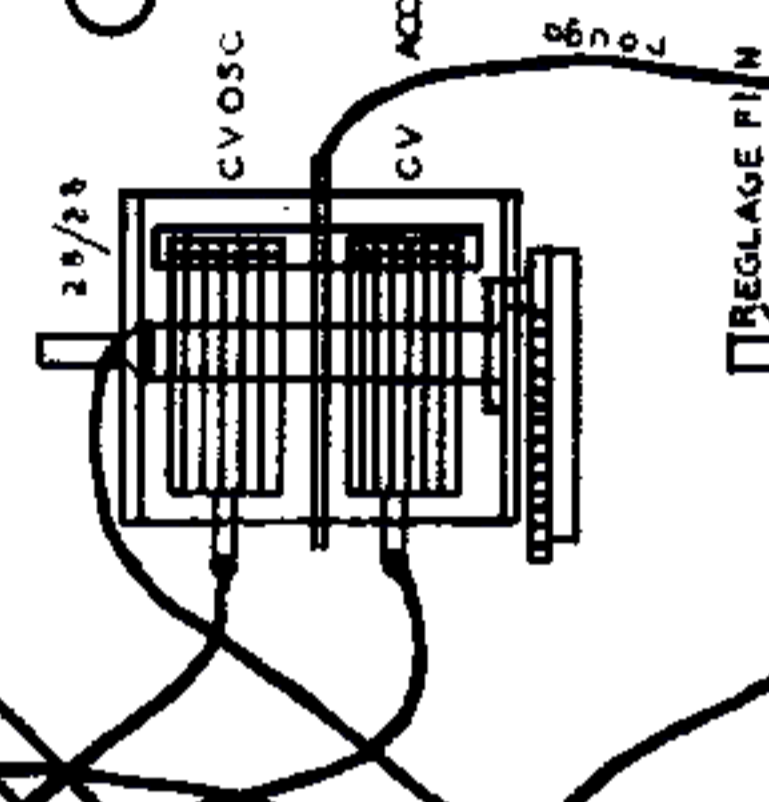
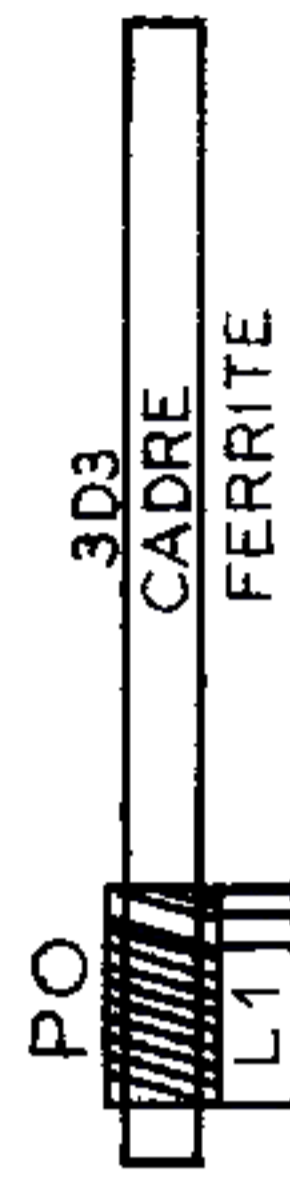


SORTIES TRANSISTORS

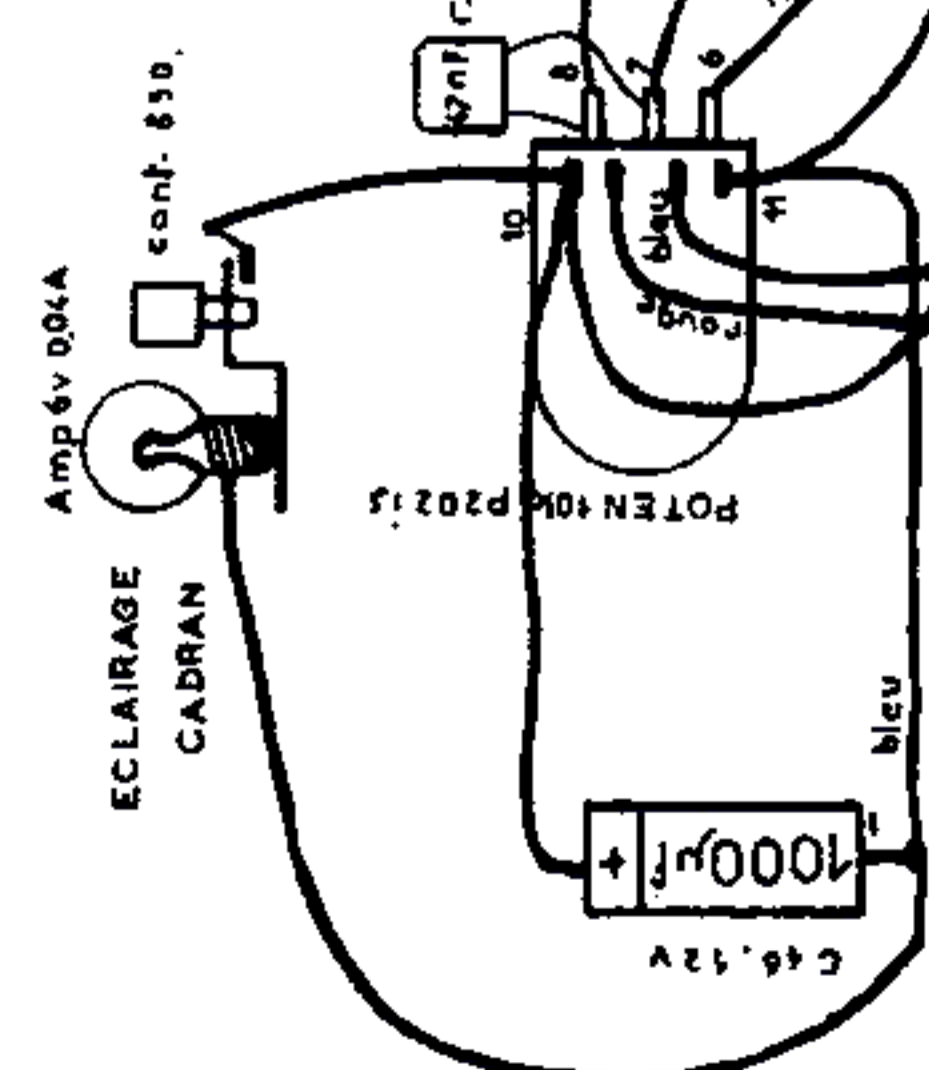
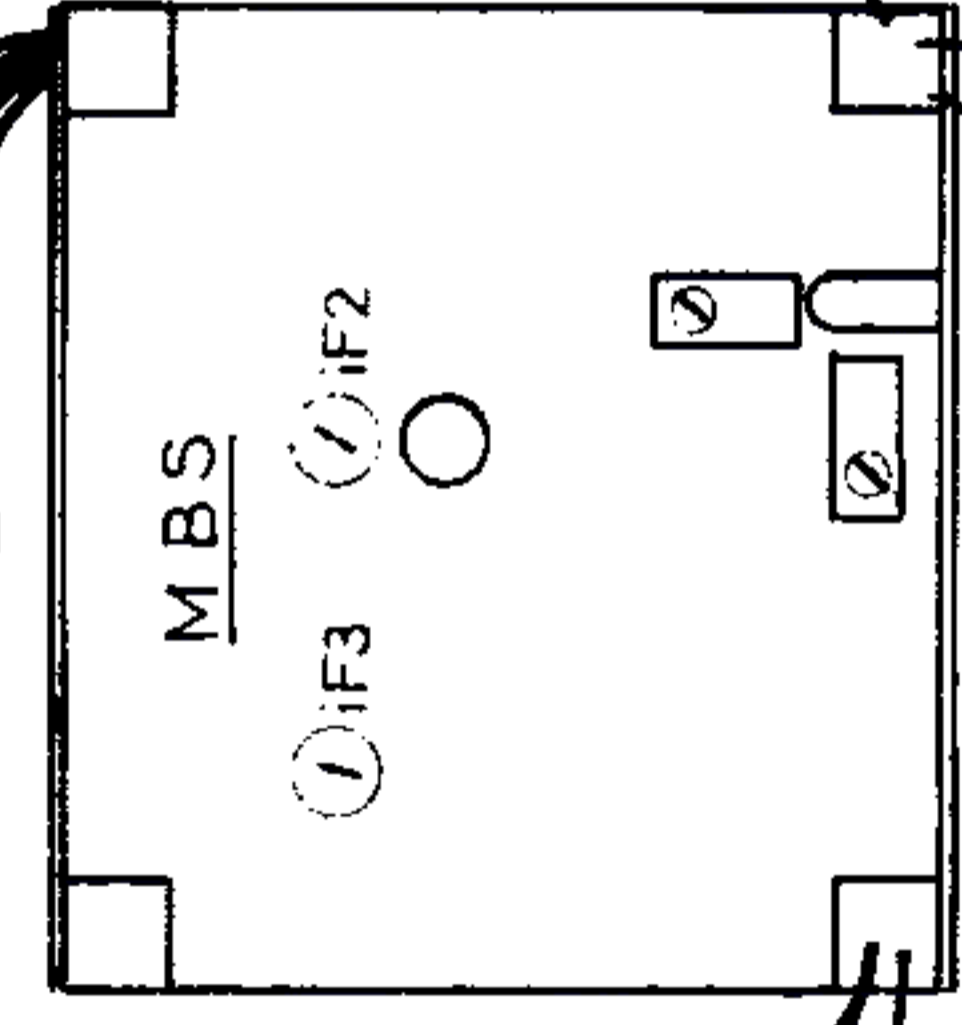
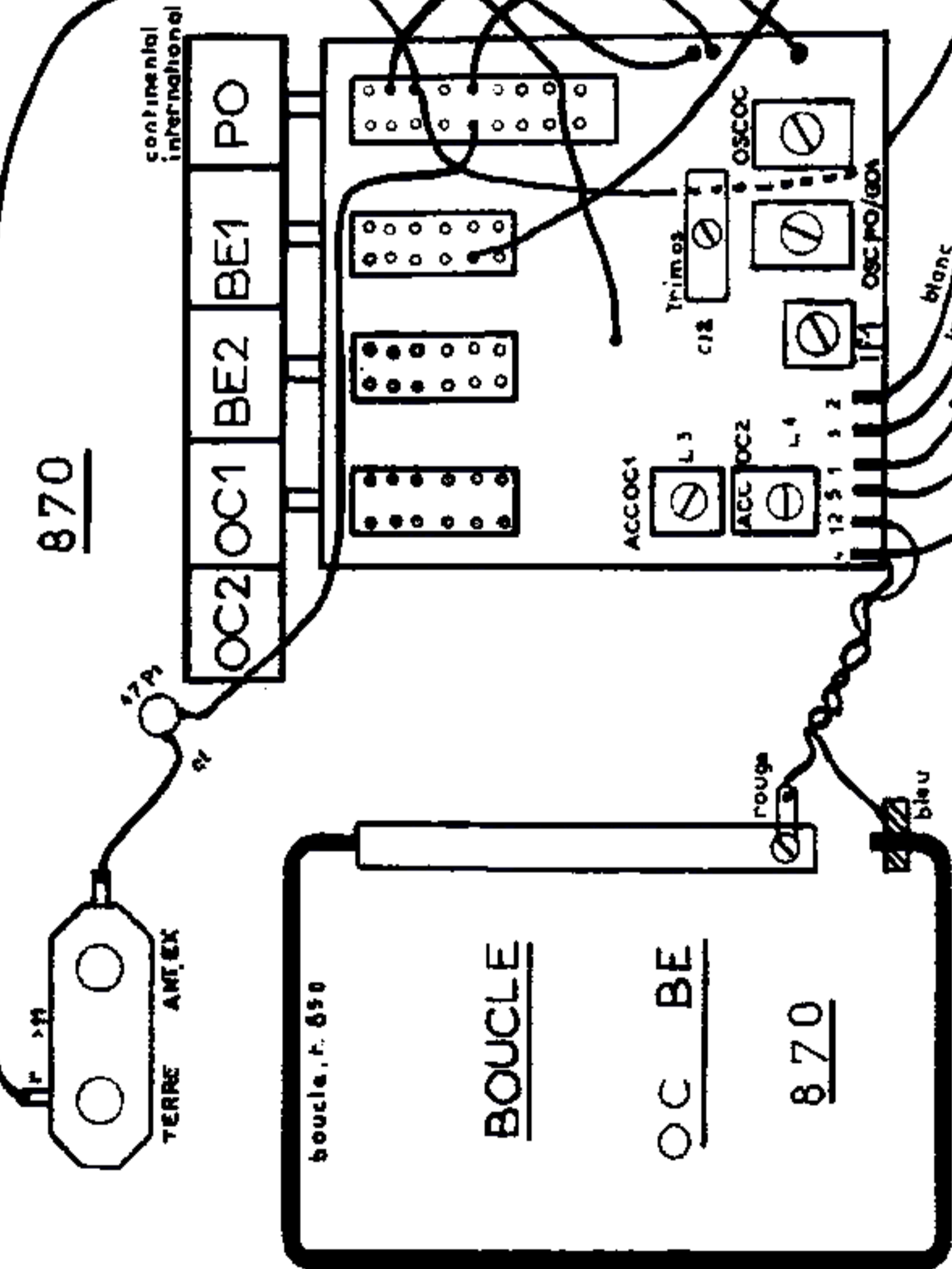
- Tr.2 - AF127
- Tr.3 - AF127
- Tr.4 - 2R13
- Tr.5 - 2R1B
- Tr.6 - AC128
- Tr.7 - AC128

VERS BLOC

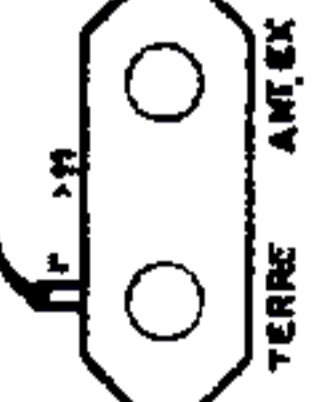
CONNECTIONS DU SYSTEME-MOSTA



870



870



blanc
jaune
noir
bleu
rouge

bleu
rouge

rouge
blanc
noir

jaune

TRIM. ACCORD PO 100Kcs C 43

noir 9

ROUGE

BLEU