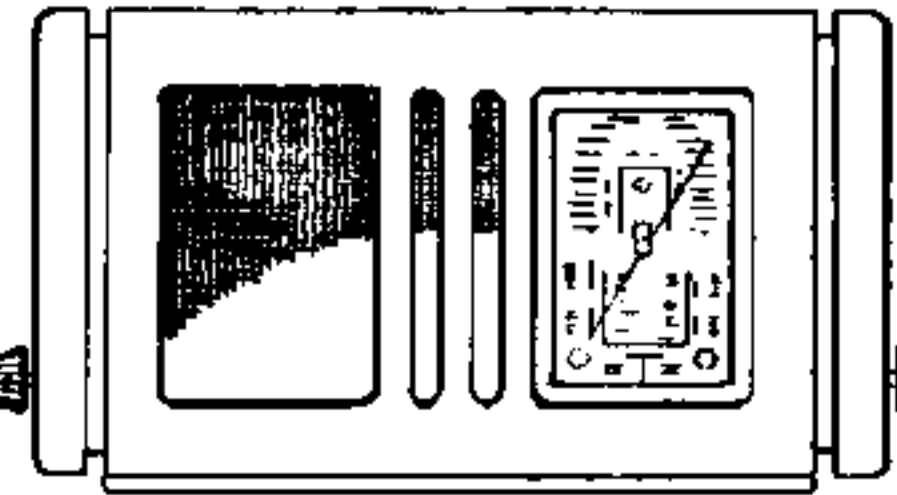


16,5-51 m (10,2-5,88 Mc/s)
196-570 m (1530-522 kc/s)
750-1910 m (400-157 kc/s)

9685 U-50 Z = 5 ()
150 V, 220 V.

452 kc/s

± 34 W.



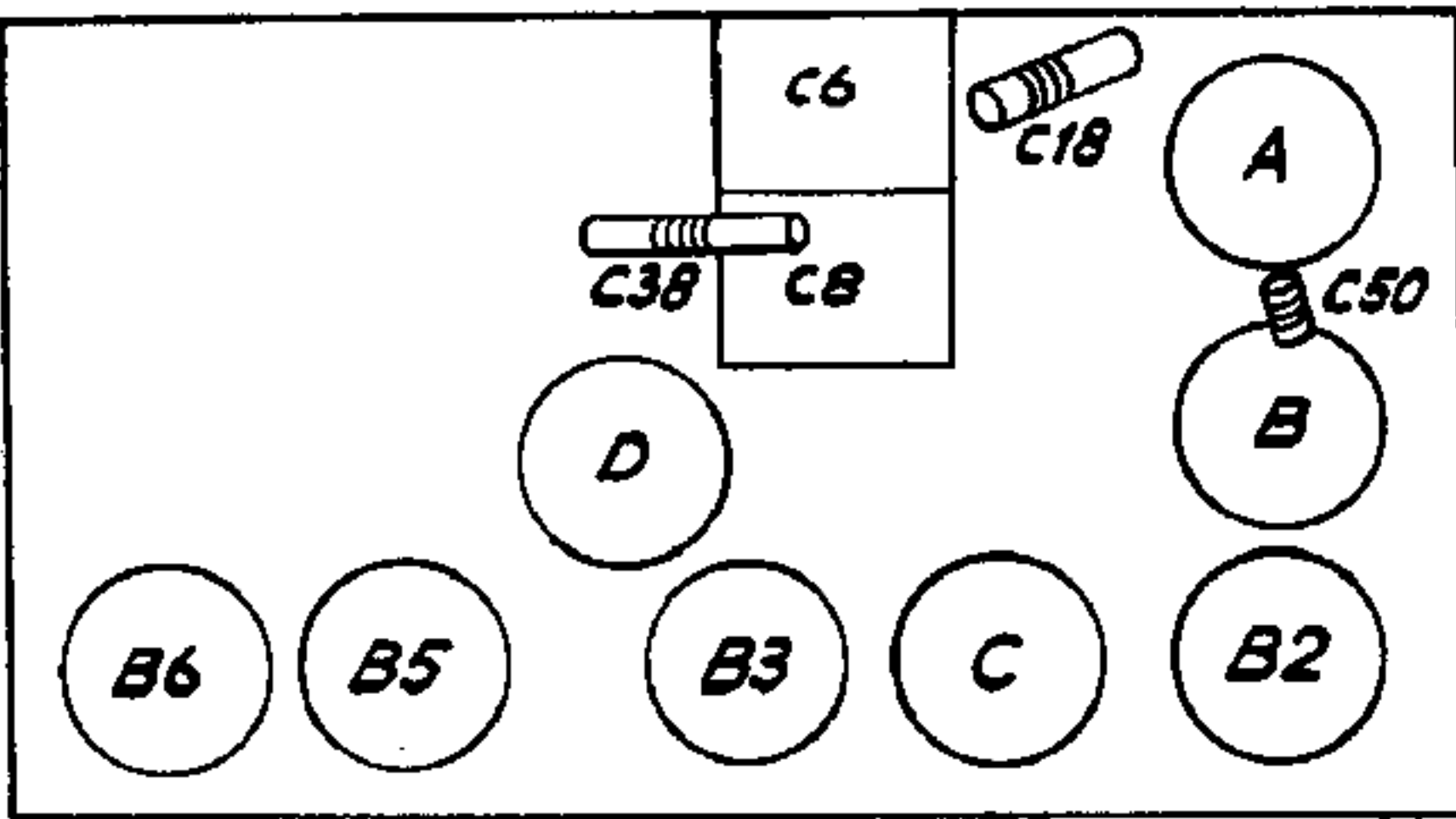
R10173

1943

	196-570 m	III		750-1910 m	III	
VOL.	max		VOL.	max		
	C6, C8 + 15°			1875 m (160 kc/s)		
	1500 kc/s — Y			160 kc/s — Y		
	C38 max			C50 max		
	C18 max					

15° 09 992 50.0

R11	0,45 + 0,05M	49 500 23.0	C1	37 μF	49 021 03.0
R31	0,82 MΩ	48 557 10/320K	C2	2 x 2,5 μF	49 021 04.1
R32	10 KΩ	48 557 10/10K	C4	11-400 pF	A9 863 99.0
R33	68 KΩ	48 557 10/68K	C8	11-400 pF	
R34	1,5 MΩ	48 557 10/1M5	C14	10 pF	48 201 10/10E
R35	6,8 MΩ	48 557 10/6M8	C18	32 pF	49 005 51.2
R36	0,68 MΩ	48 557 10/680K	C19	39 pF	48 203 10/39E
R39	520 Ω	49 362 90.2	C20	12 pF	49 201 10/12E
R40	680 Ω		C38	32 pF	49 805 51.2
R44	75 Ω		C40	23 pF	48 201 05/23E
R45	580 Ω		C48	382,5 pF	48 203 01/382E.5
R42	5600 Ω	48 557 10/5K6	C50	125 pF	49 005 52.2
R43	150 Ω	48 494 10/150E	C51	103 pF	
R46	4700 Ω	48 557 10/4K7	U52	103 pF	
R61	100 Ω	48 467 10/100E	C61	103 pF	
R75	220Ω par 270Ω = 120Ω	48 557 10/220E 48 557 10/270E	C62	103 pF	
R81	47 KΩ	48 557 10/47K	C75	100 μF	48 313 22/100
R82	470 Ω	48 467 10/470E	C85	4700 pF	48 757 20/4K7
			C100	1000 pF	48 757 20/1K
			C101	100 pF	48 203 10/100E
			C102	470 pF	48 203 10/470E
			C103	47 pF	48 203 10/47E
			C104	47000 pF	48 751 10/47K
			C105	47000 pF	48 750 10/47K
			C106	6800 pF	48 751 10/6K8
			C107	100 pF	48 203 10/100E
			C108	68 pF	48 203 10/68E
			C110	22000 pF	48 758 20/22K
			C112	2,5 μF	49 021 04.1
			C120	0,1 μF	48 751 10/100K



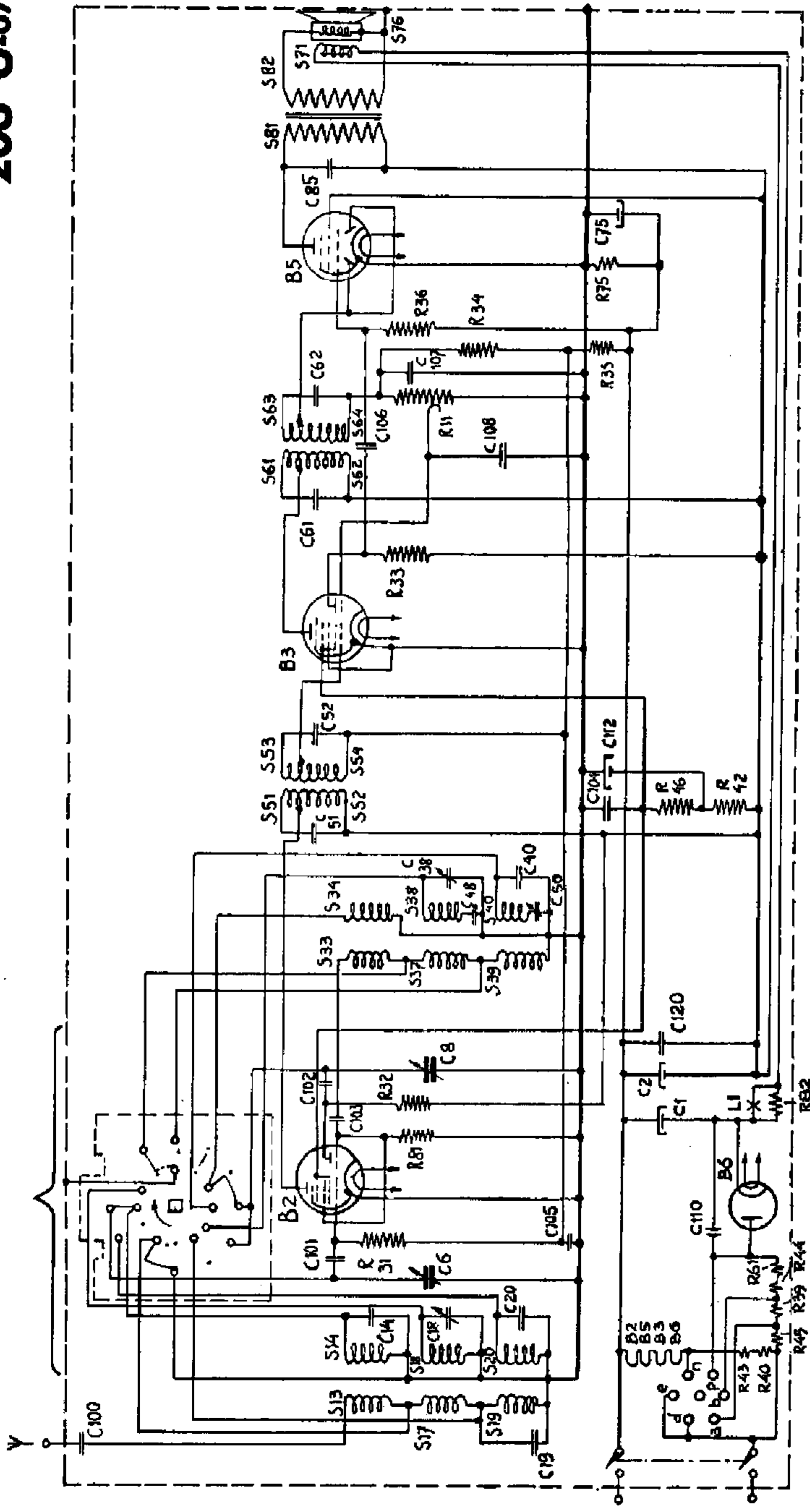
R14121

	B2	B3	B5	B6	
	UCH 21	UCH 21	UBL 21	UYIN	
V _a	aT = 80 aH = 110	aT = 25 aH = 110	105	—	V
V _{g2(4)}	70	70	115	—	V
V _k	0	0	0	—	V
I _a	aT = 2,8 aH = 1,3	aT = 1,8 aH = 1,9	85	—	mA
I _{g3(4)}	2,6	1,3	5,6	—	mA

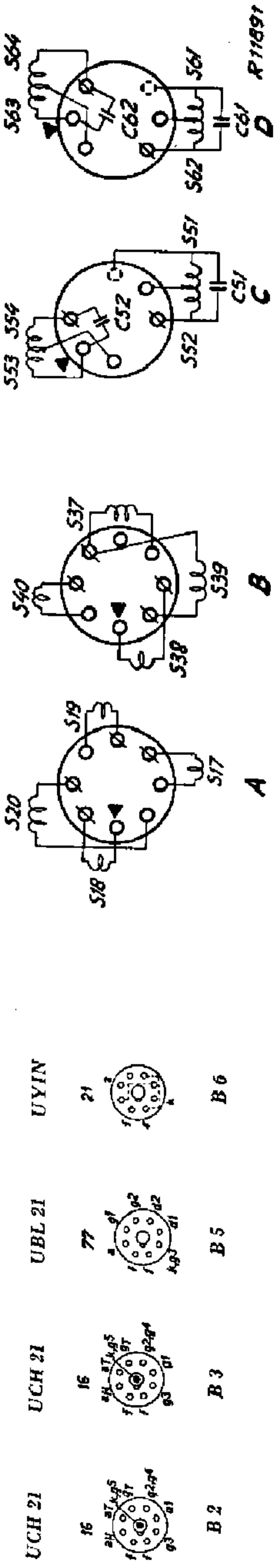
V_{C1} = 145 V, V_{C2} = 115 V, V_{C3} = 120 V, V_{C75} = 6 V, V_{S71} = 30 V, I_{S71} = 54 mA.

S13, S14	A1 001 95.1°	S61, S62, S63, S64, C61, C62	{ A1 037 12.4°
S17, S18, S19, S20	A1 037 11.0°	S71	
S33, S34	A1 001 74.4°	S76	49 981 13.1
S37, S38, S39, S40	A1 037 10.0°	S81, S82	A1 081 82.0°
S51, S52, S53, S54, C51, C52	{ A1 037 13.0°		

93 933.14.1



R 10195



-07-37-

150V \sim

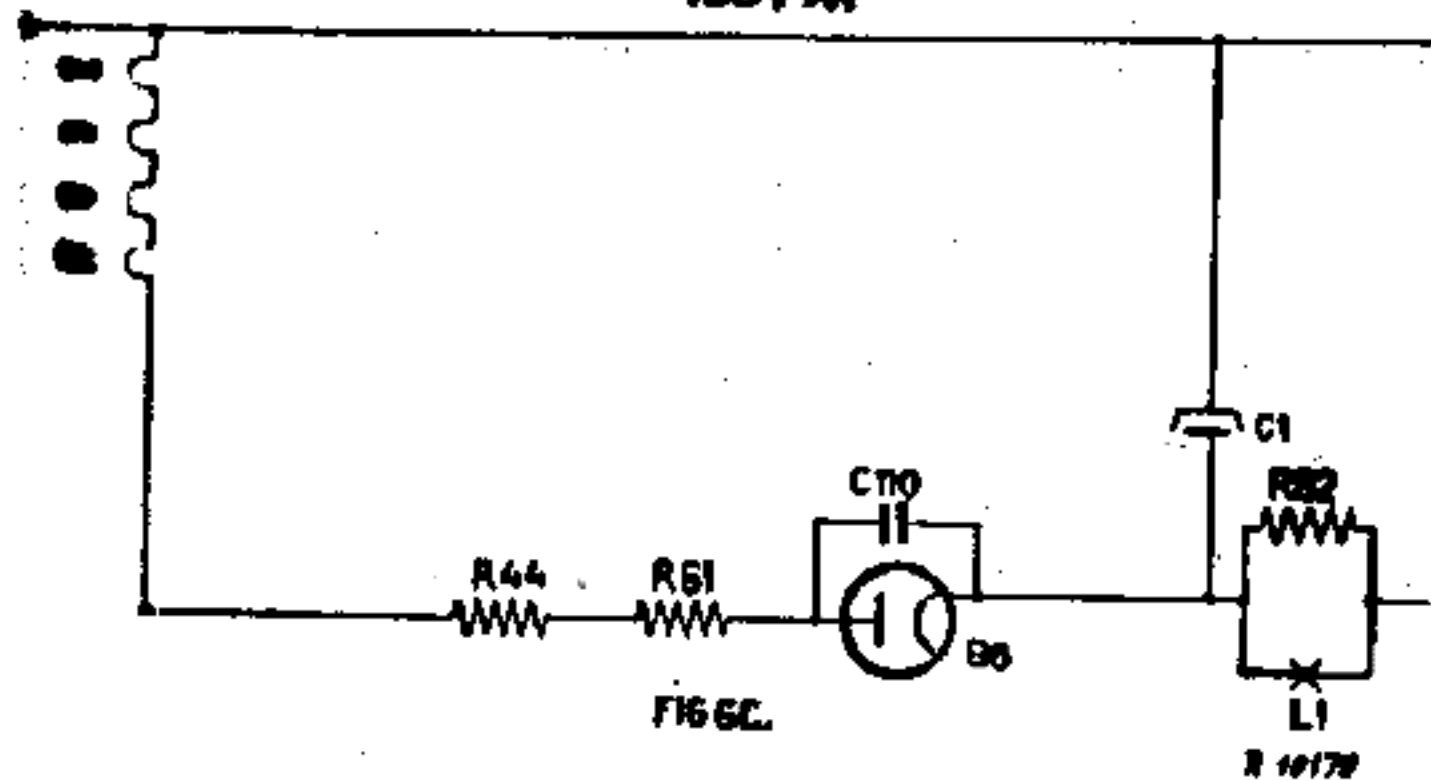
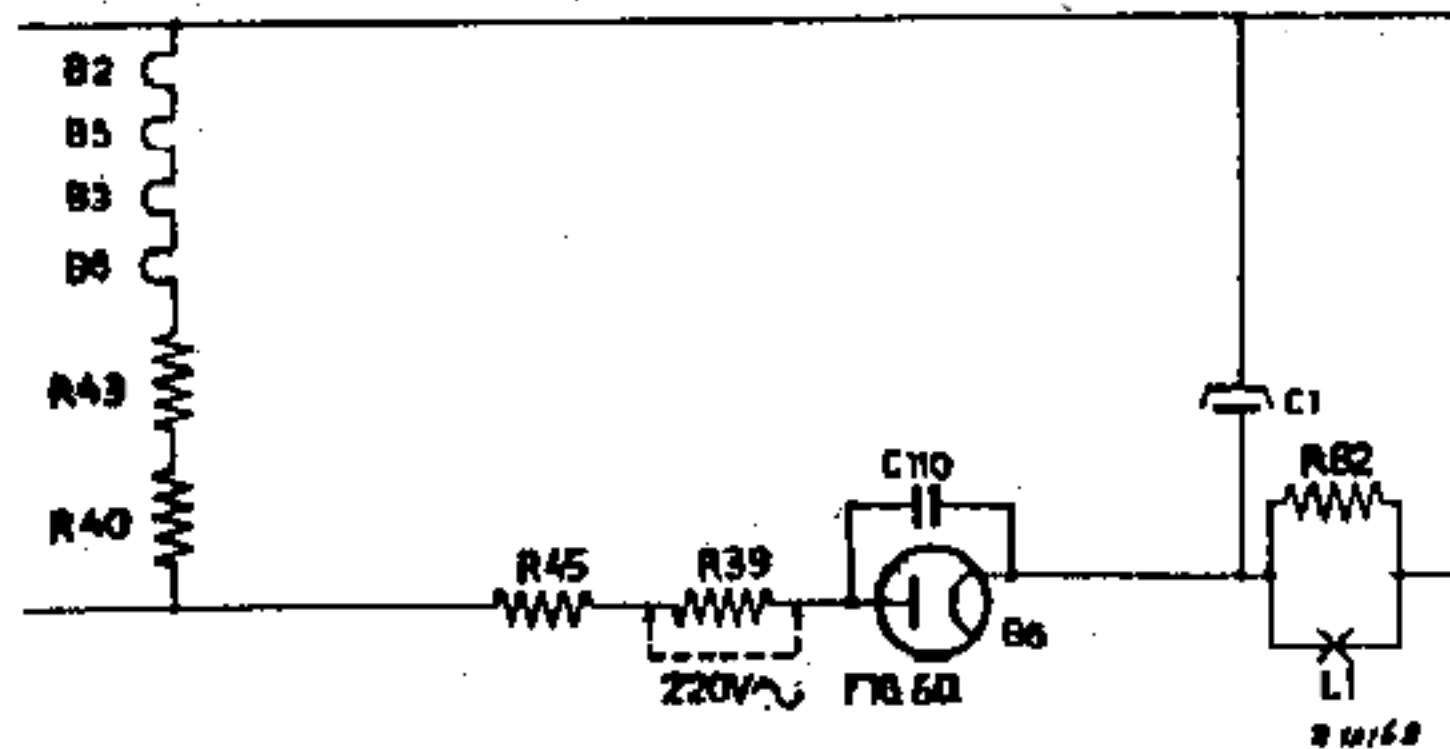


FIG. 6C.

A.956
K.833

-07-37-

220V \sim 220V \sim



220V \sim FIG. 6D

R 10160

208U-04-07-09-12

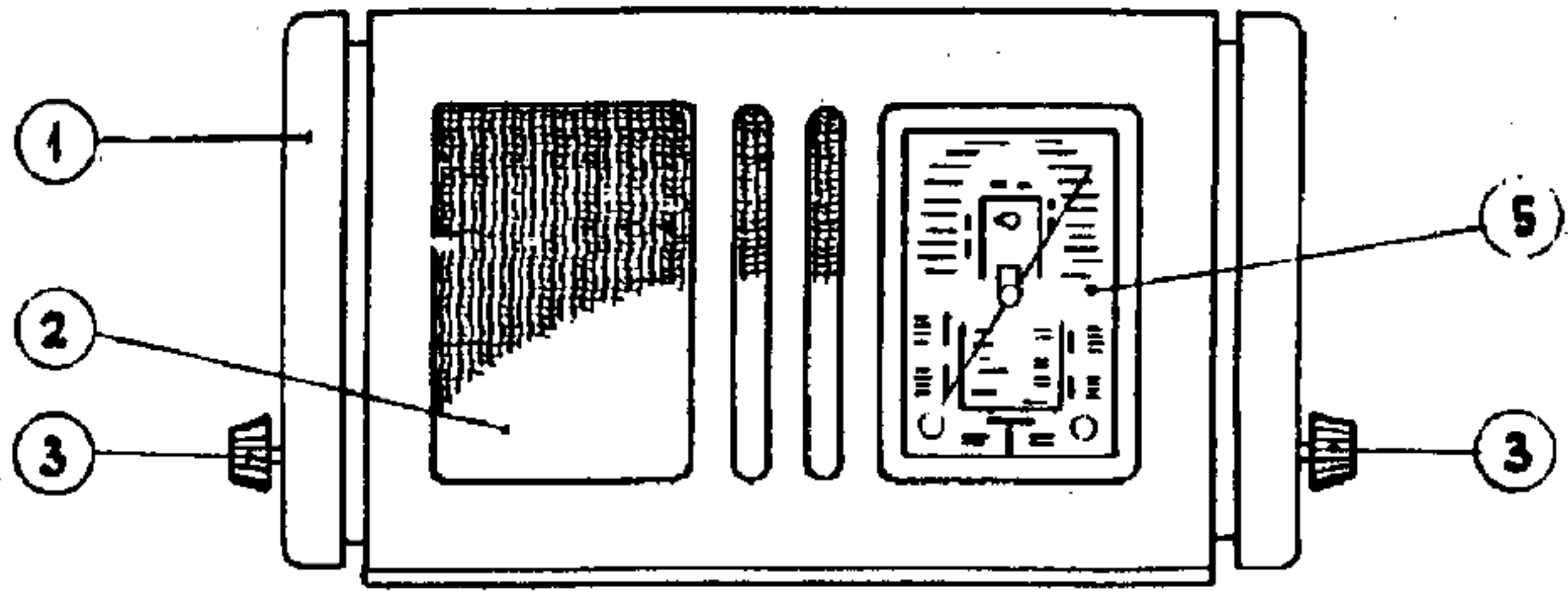


FIG 7B.

R10173

A.947
K.855