

PHILIPS SERVICE

208 U-04-09-12

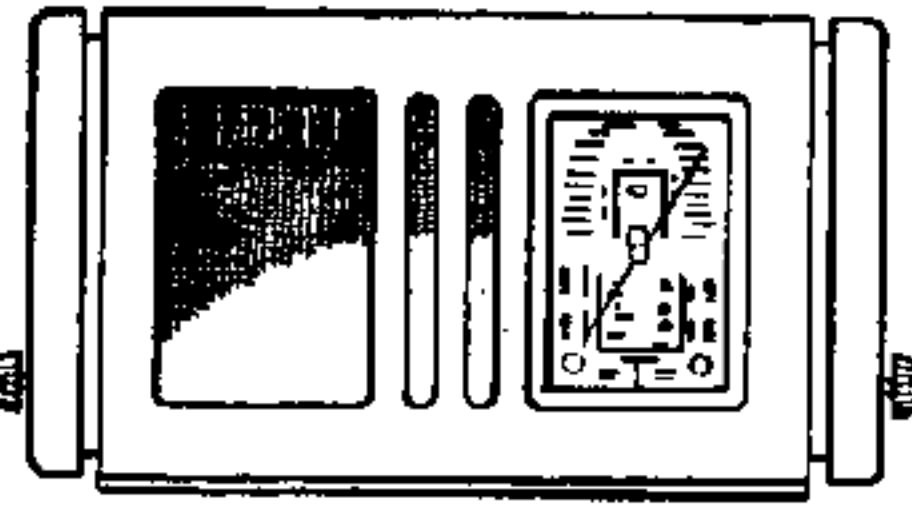
16,5-51 m (18,2-5,88 Mc/s)
 196-570 m (1530-523 kc/s)
 750-1910 m (400-157 kc/s)

9606 U-50 Z = 5 Ω

110 V, 125 V, 220 V.

452 kc/s

± 24 W.



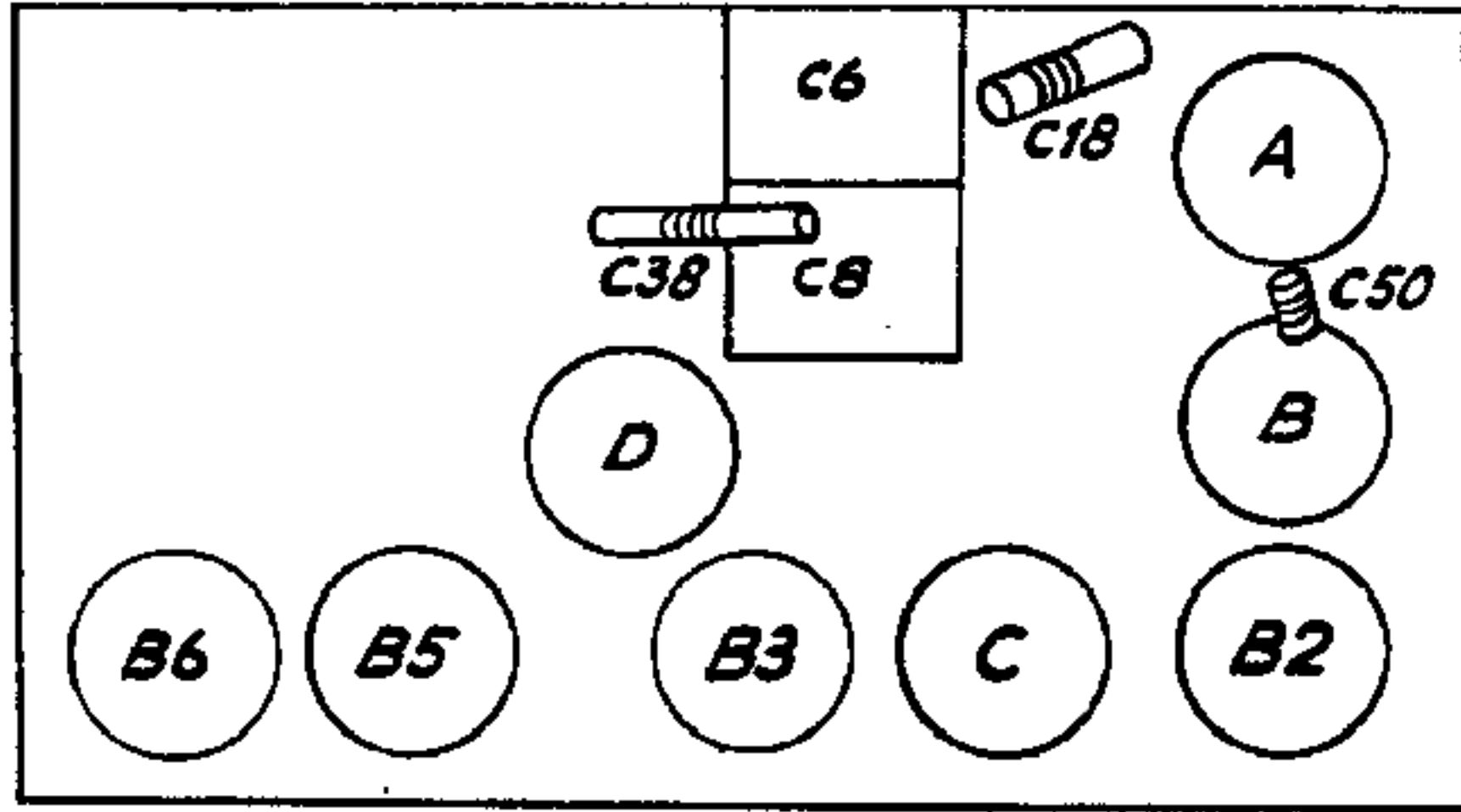
R10173

1943

196-570 m	750-1910 m
VOL max C6, C8 + 15° 1500 kc/s — Y C38 max C18 max	VOL max 1875 m (160 kc/s) 160 kc/s — Y C50 max

15° 09 992 50.0

R11	0,45 + 0,05M	49 500 23.0	C1	27 μF	49 021 03.0
R31	0,82 MΩ	48 557 10/220K	C2	2 × 2,5 μF	49 021 04.1
R32	10 KΩ	48 557 10/10K	C6	11-000 pF	A9 663 99.0
R33	68 KΩ	48 557 10/68K	C8	11-000 pF	
R34	1,5 MΩ	48 557 10/1M5	C16	10 pF	48 201 10/10E
R35	6,8 MΩ	48 557 10/6M8	C18	32 pF	49 085 51.2
R36	0,68 MΩ	48 557 10/680K	C19	39 pF	48 203 10/39E
R39	520 Ω		C20	12 pF	49 201 10/12E
R40	600 Ω		C22	32 pF	49 005 51.2
R44	75 Ω	49 362 90.2	C40	22 pF	49 201 05/22E
R45	580 Ω		C48	382,5 pF	48 203 01/382E5
R48	8600 Ω	48 557 10/8K6	C50	125 pF	49 005 52.3
R43	150 Ω	48 494 10/150E	C51	103 pF	
R46	4700 Ω	48 557 10/4K7	C52	103 pF	
R75	220 Ω par 270 Ω = 120 Ω	48 557 10/220E 48 557 10/270E	C61	103 pF	
R81	47 KΩ	48 557 10/47K	C62	103 pF	
R82	470 Ω	48 467 10/470E	C75	100 μF	48 313 22/100
			C85	4700 pF	48 757 20/4K7
			C100	1000 pF	48 757 20/1K
			C101	100 pF	48 203 10/100E
			C102	470 pF	48 203 10/470E
			C103	47 pF	48 203 10/47E
			C104	47000 pF	48 751 10/47K
			C105	47000 pF	48 750 10/47K
			C106	6800 pF	48 751 10/6K8
			C107	100 pF	48 203 10/100E
			C108	68 pF	48 203 10/68E
			C110	22000 pF	48 756 20/22K
			C112	2,5 μF	49 021 04.1
			C120	0,1 μF	48 751 10/100K



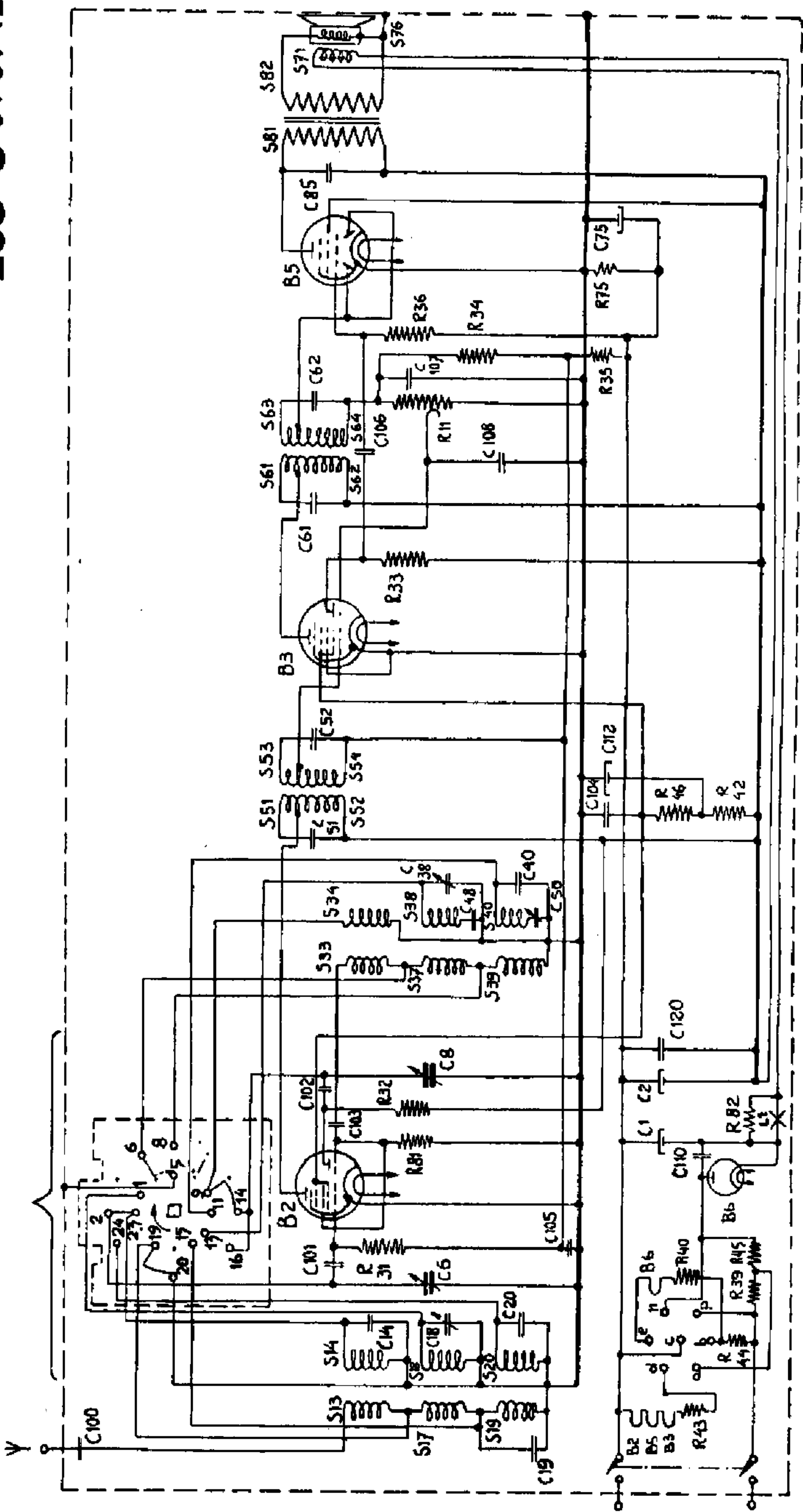
R14121

	B2	B3	B5	B6	
	UCH 21	UCH 21	UBL 21	UYIN	
Va	aT = 80 aH = 110	aT = 25 aH = 110	105	—	V
Vg2(4)	70	70	115	—	V
Vk	0	0	0	—	V
Ia	aT = 2,8 aH = 1,3	aT = 1,3 aH = 1,9	35	—	mA
Ig3(4)	2,6	1,3	5,6	—	mA

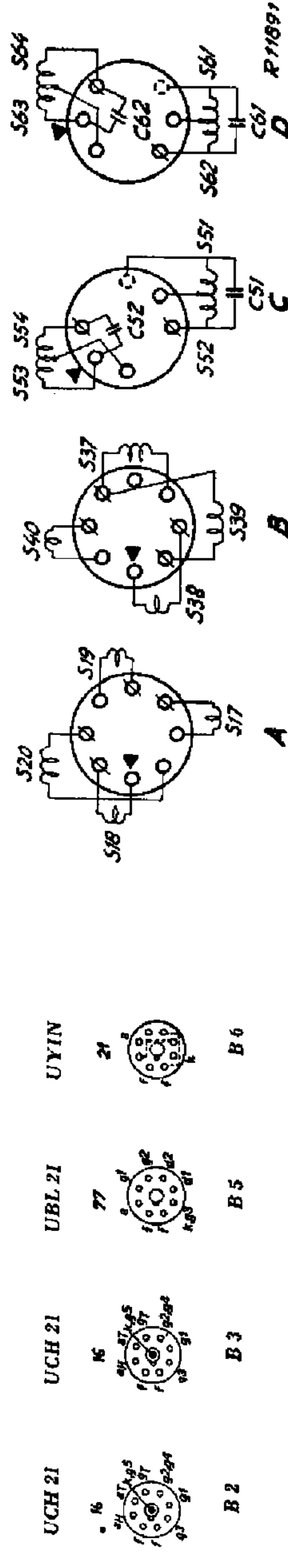
S13, S14	A1 001 95.1*	S61, S62, S63, S64, C61, C62	A1 037 12.4*
S17, S18, S19, S20	A1 037 11.0*	S71	A1 001 87.4*
S33, S34	A1 001 74.4*	S76	49 981 13.1
S37, S38, S39, S40	A1 037 10.0*	S81, S82	A1 081 82.0*
S51, S52, S53, S54, C31, C32	A1 037 13.0*		

VC1 = 145 V, VC2 = 115 V, VC3 = 120 V, VC7E = 6 V, VS71 = 30 V, IS71 = 54mA.

93 959.12.



R 10154



B 2

B 3

B 5

B 6

A

B

C

D

208U-04-07-09-12

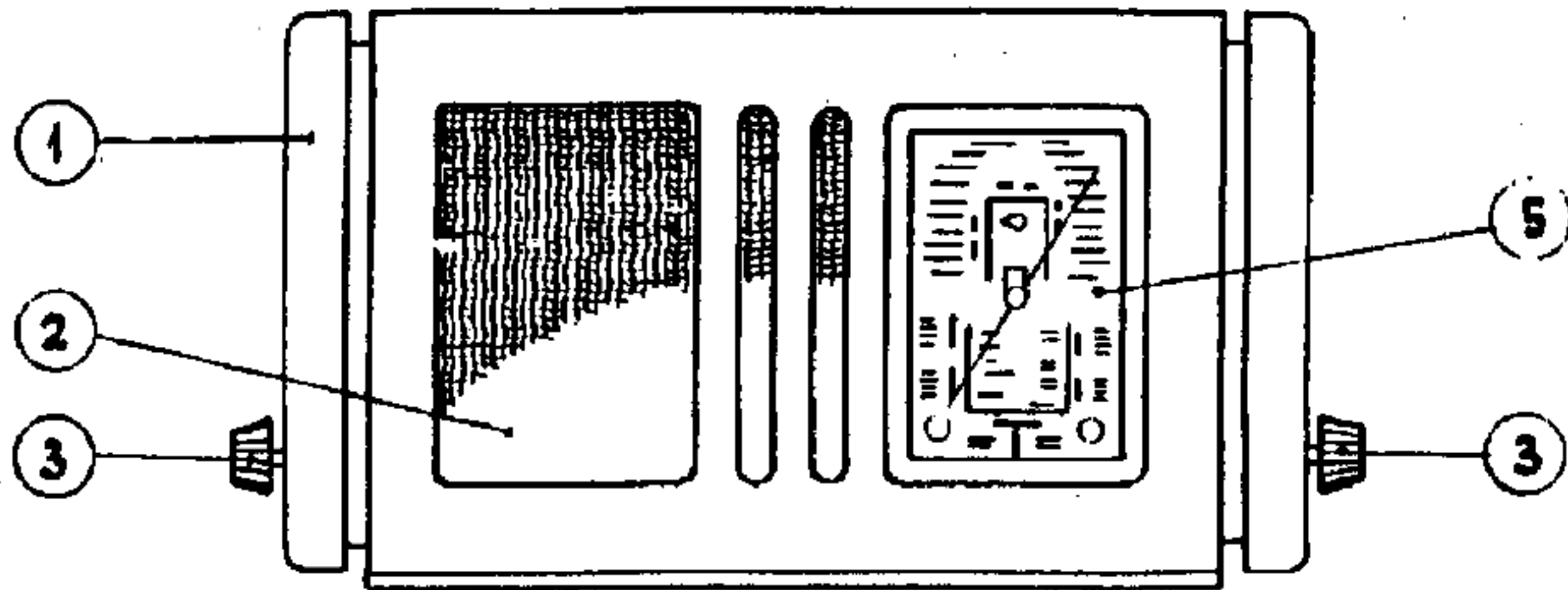


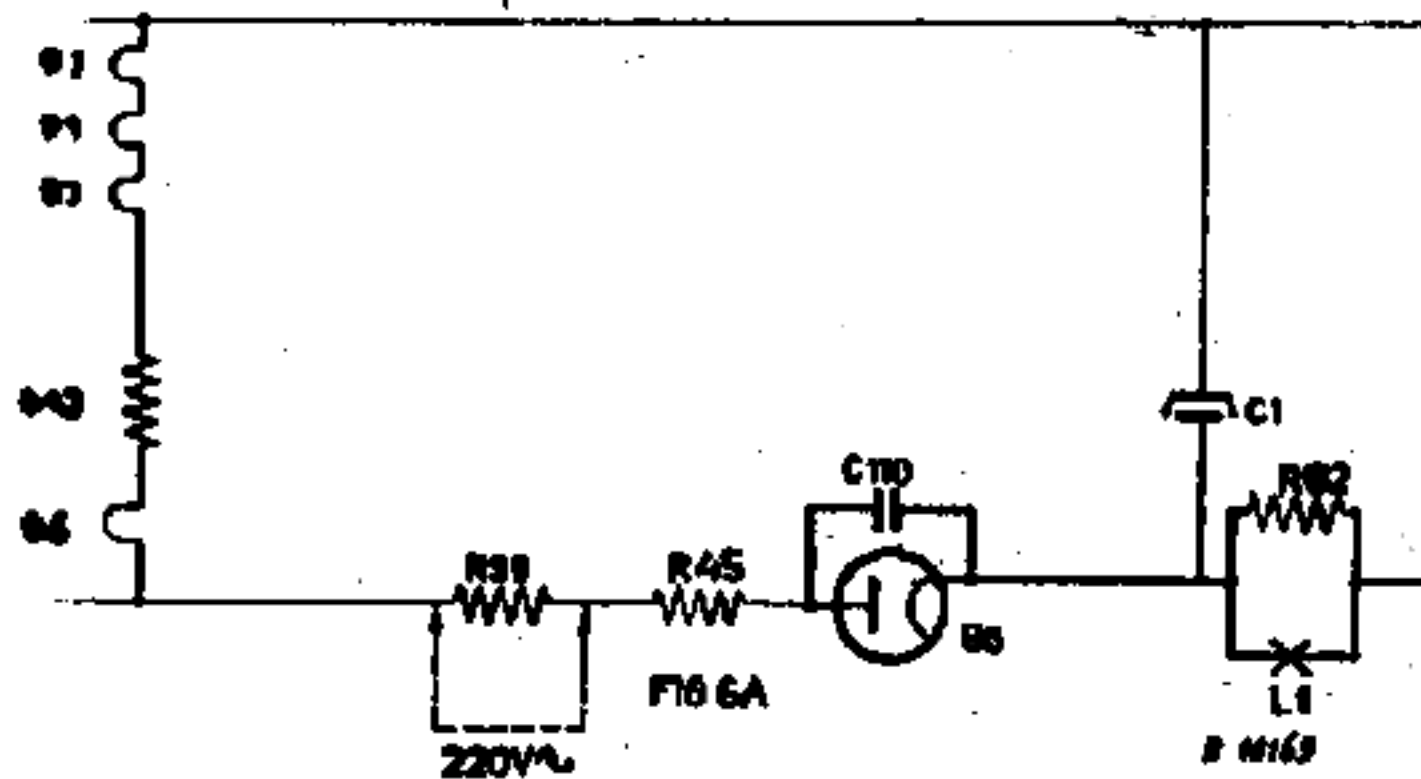
FIG 7B.

R10173

A.947
K.855

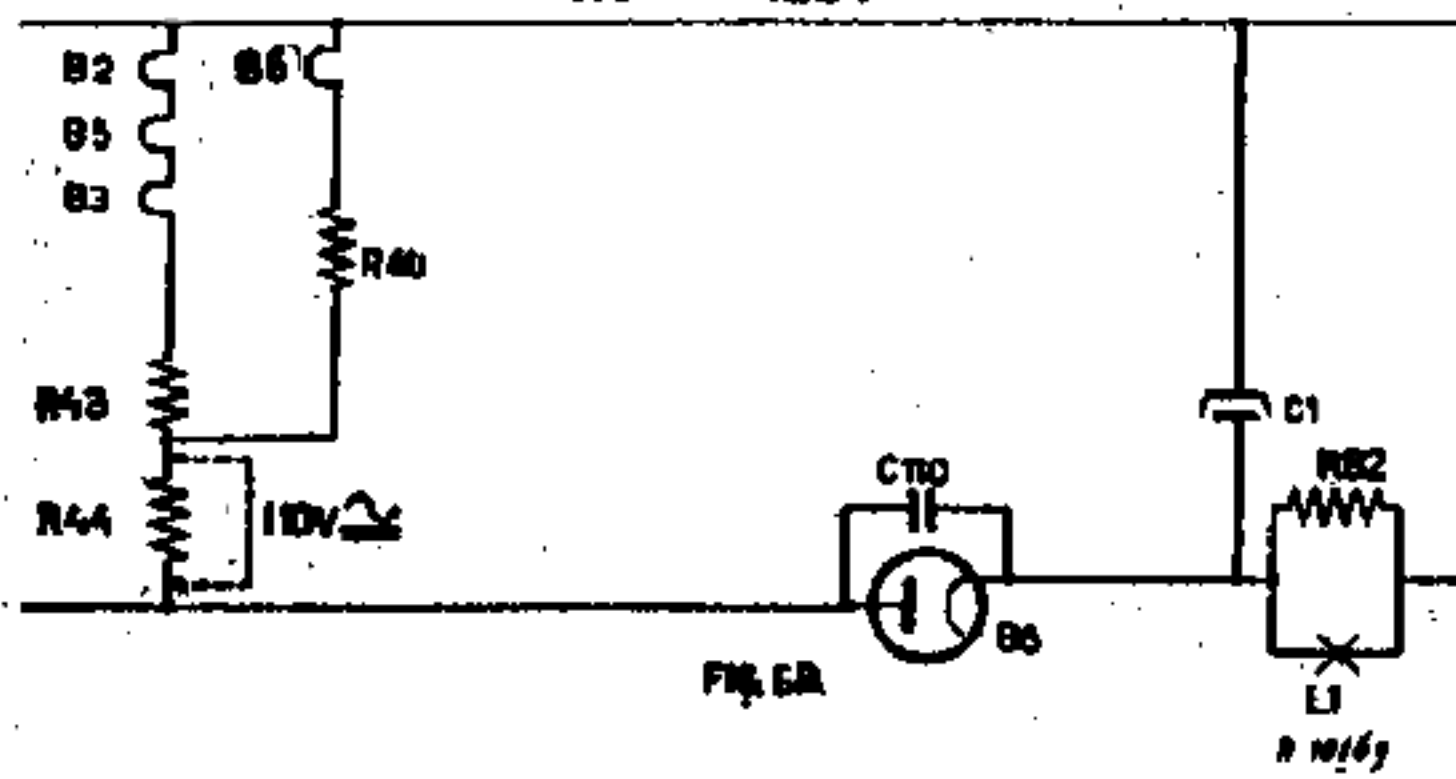
-01-04-09-12-19-40-

220V \sim 220V \sim



-01-04-09-12-19-40-

110V \sim 125V \sim



Documentatie 208 U.

In het schakelschema -01-04-09-12-19-40 (fig. 6 A) van het toestel 208 U is een weerstand (R40) weggelaten. U gelieve dezen weerstand aan te brengen in serie met R 43 en B 6 Dus in genoemde figuur van boven naar beneden B2-B5-B3-R43-B6-R40.