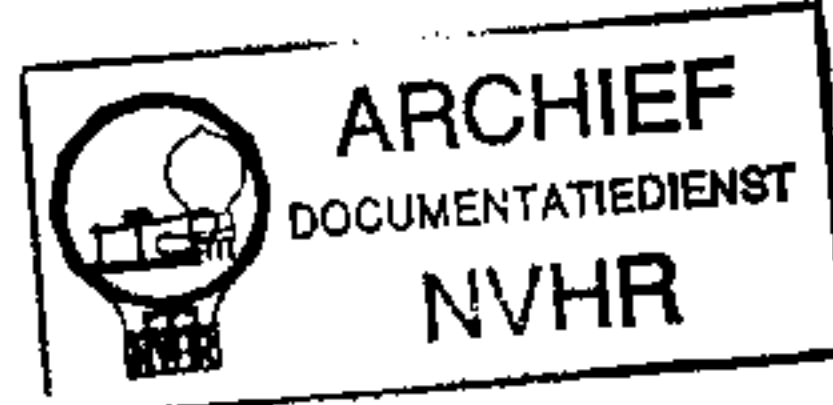


Met dank aan Jef Bos

TRADE NAME : Hitachi Model TH-812
 SUPPLIER : The Sampson Co., Electronics Div.
 2244 S. Western Ave., Chicago 81, Ill.
 TYPE SET : 9 Transistor AM Receiver
 POWER SUPPLY : 9 Volts DC
 RATING : 10MA@9VDC (No Signal, Min. Volume)
 30MA@9VDC (Signal, Normal Volume)
 TUNING RANGE : BROADCAST 530 - 1605KC

Ned. Ver. v. Historie v.



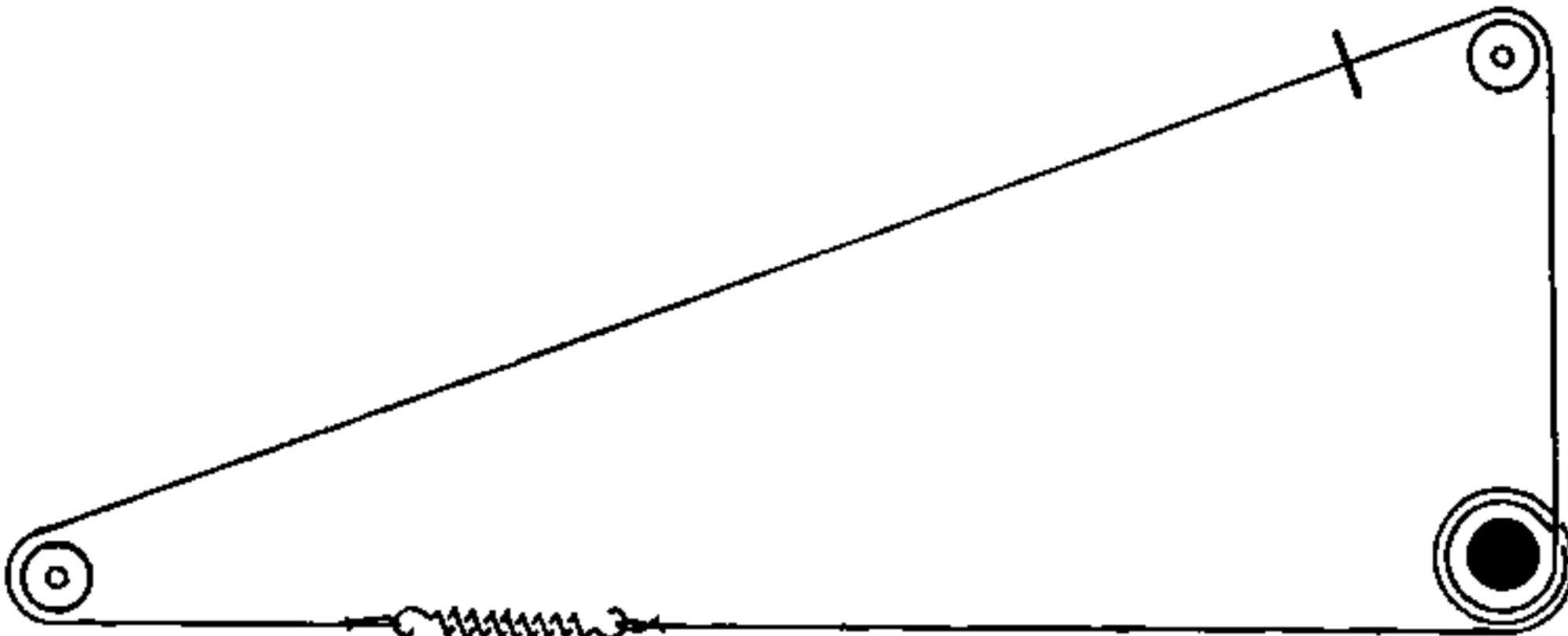
ALIGNMENT INSTRUCTIONS

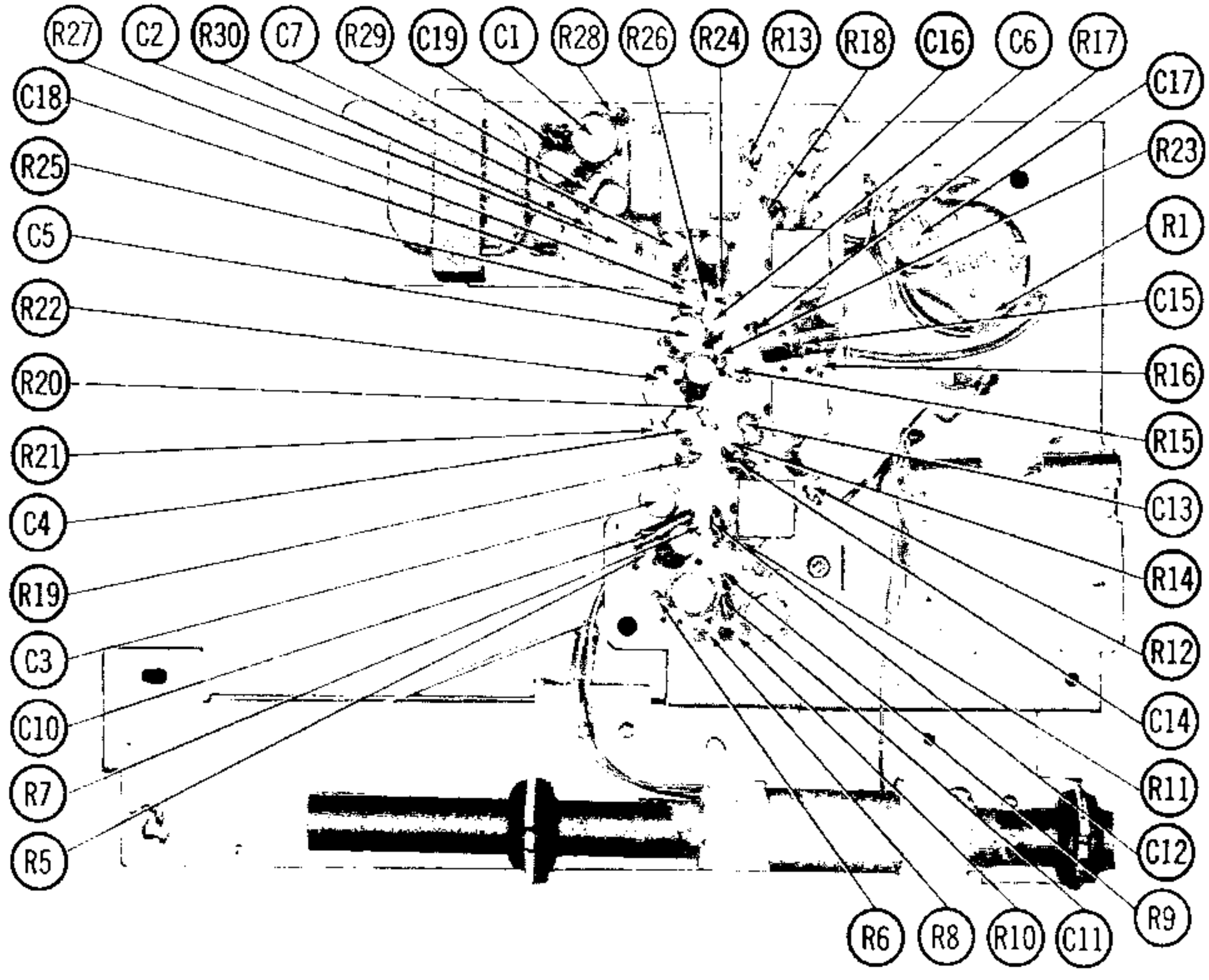
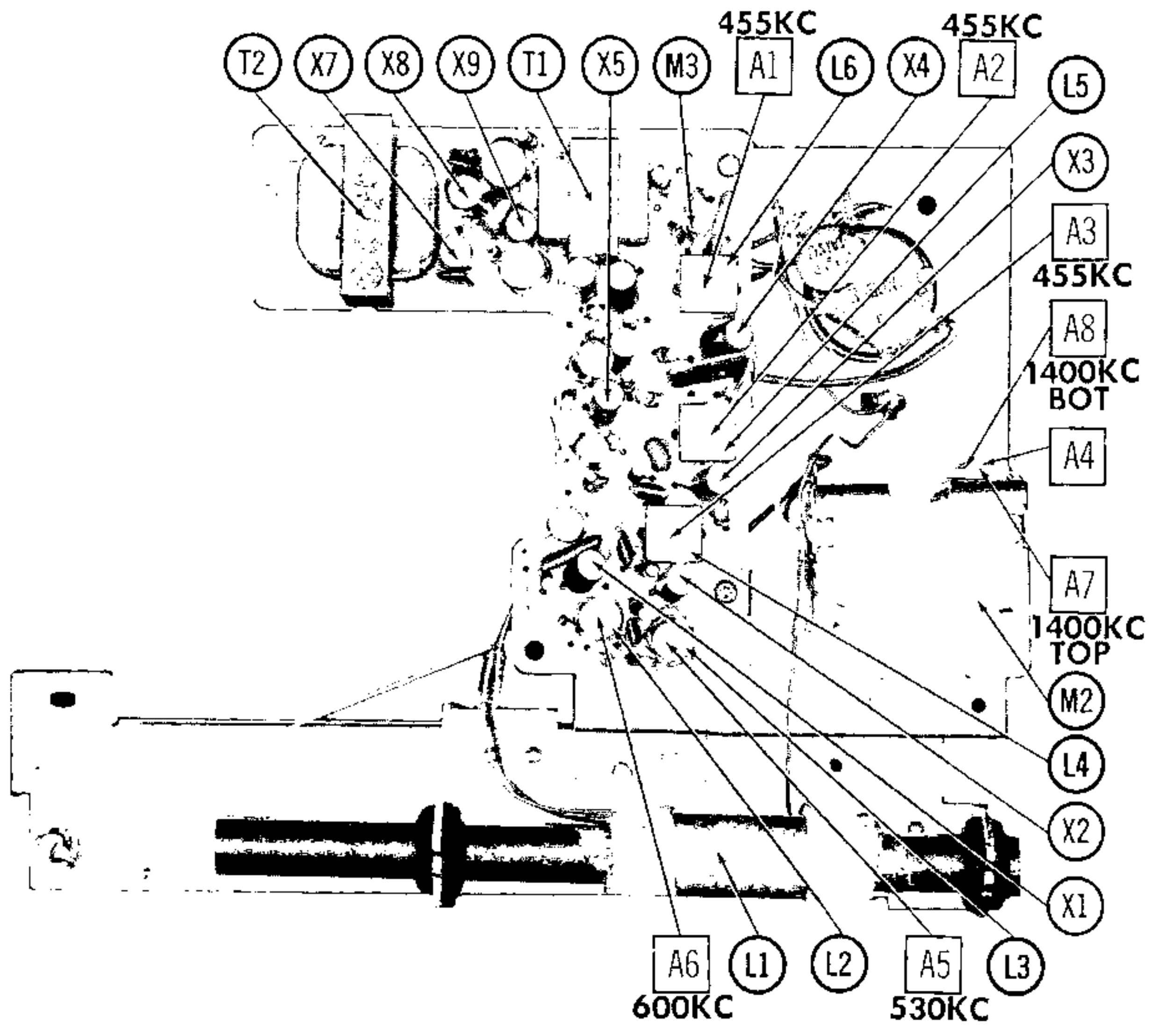
Check for specified source voltage.
 Fashion loop of several turns of wire and connect generator across loop.
 Adjust output of generator to radiate only enough signal into receiver to obtain a suitable indication.
 Suggested Alignment Tools:

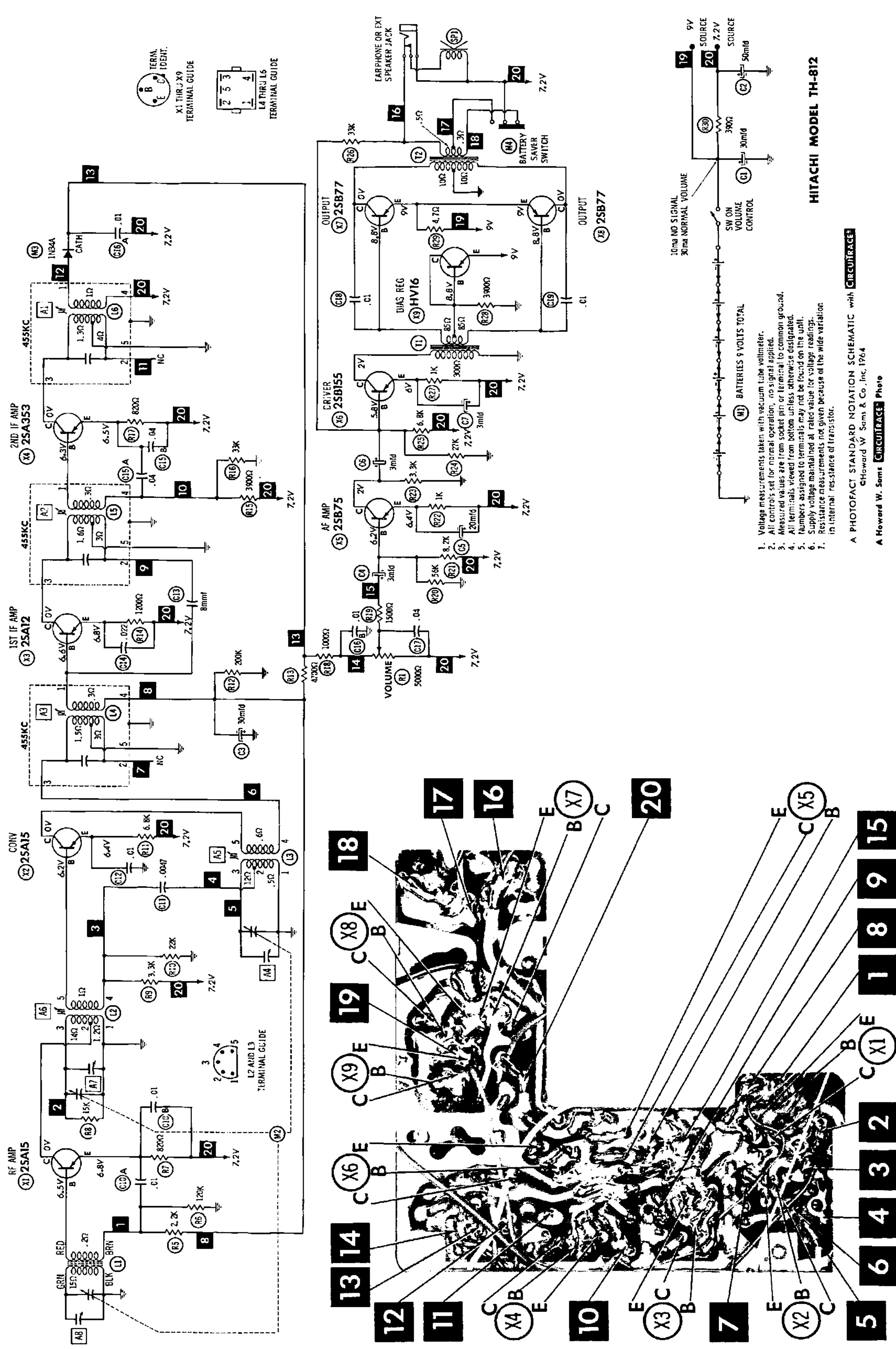
- A1, A2, A3, A4, A7, A8..... GENERAL CEMENT #8290, 8868, 9089
 WALSCO #2525, 2528, 2589
- A5, A6..... GENERAL CEMENT #8605
 WALSCO #2505

	SIGNAL GENERATOR FREQUENCY	RADIO DIAL SETTING	INDICATOR	ADJUST	REMARKS
1.	455KC (400v Mod.)	Tuning gang fully open.	Output Meter across voice coll.	A1, A2, A3	Adjust for maximum, Repeat as required.
2.	1605KC	"	"	A4	Adjust for maximum.
3.	530KC	Tuning gang fully closed	"	A5	Adjust for maximum. Repeat steps 2 and 3.
4.	600KC	Tune to Signal.	"	A6	Rock tuning gang and adjust for maximum.
5.	1400KC	"	"	A7, A8	Adjust for maximum. Repeat steps 4 and 5.

DIAL CORD STRINGING







HITACHI MODEL TH-812

1. Voltage measurements taken with vacuum tube voltmeter.
2. All controls set for normal operation, no signal applied.
3. Measured values are from socket pin or terminal to common ground.
4. All terminals viewed from bottom unless otherwise designated.
5. Numbers assigned to terminals may not be found on the unit.
6. Supply voltage maintained at rated value for voltage readings.
7. Resistance measurements not given because of the wide variation in internal resistance of transistor.

A PHOTOFACT STANDARD NOTATION SCHEMATIC with CIRCUITRACE[®]
 ©Howard W. Sams & Co., Inc. 1964
 A Howard W. Sams CIRCUITRACE[®] Photo

PARTS LIST AND DESCRIPTION

TRANSISTORS

ITEM No.	ORG. TYPE	USE	REPLACEMENT DATA				NOTES
			DELCO PART No.	GENERAL ELECTRIC PART No.	RCA PART No.		
X1	2SA15	RF Amplifier	D8-25	GE-1		PNP	
X2	2SA15	Converter	D8-26	GE-1		PNP	
X3	2SA12	1st IF Amplifier	D8-25	GE-1		PNP	
X4	2SA353	2nd IF Amplifier	D8-26	GE-1		PNP	
X5	2SB75	AF Amp.	D8-26	GE-2	2N406	PNP	
X6	2SB155	Driver	D8-26	GE-2	2N406	PNP	
X7	2SB77	Output	D8-26	GE-2	2N408	PNP	
X8	2SB77	Output	D8-26	GE-2	2N408	PNP	
X9	HV16	Bias Reg.		GE-3	1N2326	PNP	

ELECTROLYTIC CAPACITORS

ITEM No.	RATING CAP.	VOLTS.	REPLACEMENT DATA						SPRAGUE PART No.	
			HITACHI PART No.	AEROVOX PART No.	CORNELL-DUBIER PART No.	GENERAL ELECTRIC PART No.	GENERAL INSTRUMENT PART No.	MALLORY PART No.		
C1	30	10		BCD10025	ECPB412	MT1-16	BL1430	BL1430	TT10X30	VL-1132
C2	50	10		BCD10050	ECPB415	MT1-16	MLV50-10	MLV50-10	PET1575	VL-1134
C3	30	3		BCD3025	ECPB412	MT1-13	BL1213	BL1213	PET1580	VL-1043
C4	3	3		BCD3003	ECPB403	MT1-3	MLV2-6	MLV2-6	T10X3	VL-1033
C5	20	3		BCD3030	ECPB410	MT1-13	BL1211	BL1211	PET1570	VL-1040
C6	3	6		BCD4003	ECPB403	MT1-3	MLV2-6	MLV2-6	T10X3	VL-1032
C7	3	3		BCD3003	ECPB403	MT1-3	MLV2-6	MLV2-6	T10X3	VL-1033

FIXED CAPACITORS

ITEM No.	RATING	REMARKS	REPLACEMENT DATA						MALLORY PART No.	SPRAGUE PART No.
			AEROVOX PART No.	CENTRALAB PART No.	CORNELL-DUBIER PART No.	ELMENCO PART No.	MALLORY PART No.			
C10A	.01		TTD-005	DDM2-103	H1		TA-250	TG-D50		
C10B	.01		TTD-01	CK-502	H2		TA-110	TG-S10		
C11	.0047		NPO-81 8.2	CK-103	C10V8C		TA-120	10TCC-V82		
C12	.01		TTD-02	CK-203	H3		TA-150	TG-S20		
C13	8		TTD-03	CK-503	H5		TA-150	TG-S50		
C14	.022		TTD-04	CK-503	H5		TA-150	TG-S50		
C15A	.04		TTD-05	DDM2-103	H5		TA-150	TG-S50		
C15B	.01		TTD-05	CK-503	H5		TA-150	TG-S50		
C16A	.01		TTD-01	CK-103	H2		TA-110	TG-S10		
C16B	.01		TTD-01	CK-103	H2		TA-110	TG-S10		
C17	.04									
C18	.01									
C19	.01									

CONTROLS

All wattages 1/2 watt, or less, unless otherwise listed.

ITEM No.	USE	RESISTANCE	REPLACEMENT DATA					
			HITACHI PART No.	CENTRALAB PART No.	CLAROSTAT PART No.	CTS-IRC PART No.	MALLORY PART No.	
R1	Volume & Switch	5000Ω	T0563	F2-5000, KR-1, SU204 or (B-11, KR-1)		Q13-114, 76-1		UA53A, SL3500, US41, or (RU53A, SL38, SL3500, US41) or (U-12, U638)

COILS (RF-IF)

ITEM No.	USE	REPLACEMENT DATA						NOTES
		HITACHI PART No.	MERIT PART No.	MILLER PART No.	STANCOR PART No.	WORKMAN PART No.		
L1	Loopstick RF							
L2	Onc.							
L3	1st IF		BC-374	2006			RTC-9266	
L4	2nd IF		BC-375	2067			RTC-9267	
L5	3rd IF		BC-376	2068			RTC-9268	

TRANSFORMER (DRIVER)

ITEM No.	TURNS RATIO	REPLACEMENT DATA						NOTES
		HITACHI PART No.	MERIT PART No.	STANCOR PART No.	THORDARSON PART No.	TRIAD PART No.		
		PRI.	SEC.					
T1	1.3	1	441046					

TRANSFORMER (AUDIO OUTPUT)

ITEM No.	IMPEDANCE	REPLACEMENT DATA						NOTES
		HITACHI PART No.	MERIT PART No.	STANCOR PART No.	THORDARSON PART No.	TRIAD PART No.		
		PRI.	SEC.					
T2	800Ω	8-10Ω	452014					

SPEAKER

ITEM No.	TYPE	REPLACEMENT DATA		NOTES
		HITACHI PART No.	QUAM PART No.	
SP1	4" x 6" PM 8-10Ω	528088	48A128	

BATTERIES

ITEM No.	VOLTAGE	REPLACEMENT DATA				NOTES
		HITACHI PART No.	BURGESS	EVEREADY	MALLORY	
M1	9V	230 (or AL-2)	A100 (or B99)		M-13R (or MN1900)	8 Required

MISCELLANEOUS

ITEM No.	PART NAME	REPLACEMENT DATA		NOTES
		HITACHI PART No.		
M2	Tuning Cap.			
M3	Detector (1N34A)			
M4	Battery Saver Switch			

WIRING DATA

General-use Unshielded Hook-up Wire		Use Belden No. 8530 (Solid 22AWG)	Available in 13 Colors
		8524 (Stranded 22AWG)	
		8570 (Stranded 26AWG)	