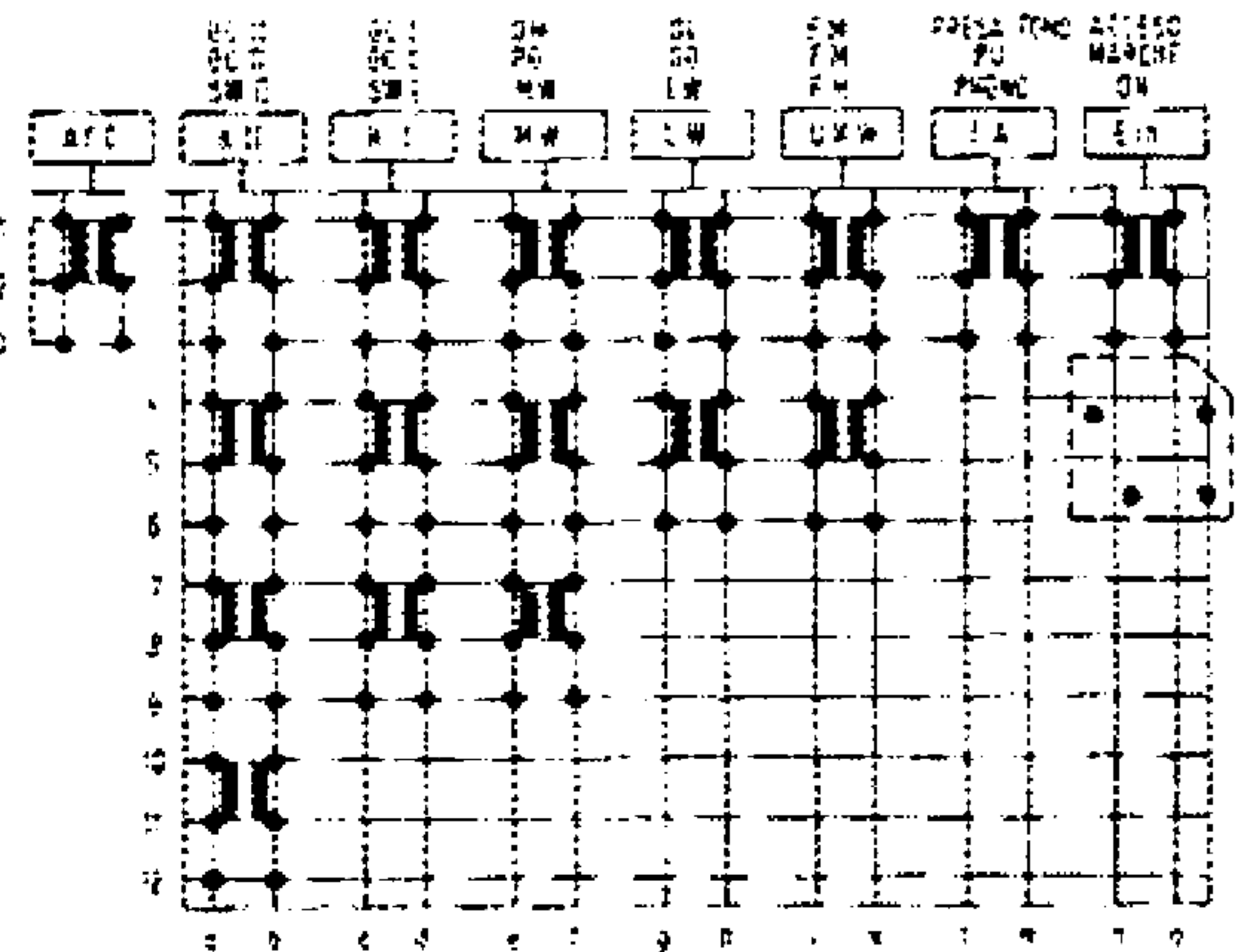


Werkkreis Spulenkopf
S11 PRESELEKTION
LON
DRII PAKK ROUIT
BLOK BESWAARDE
DRII PRESELEKTION
COMPLEXES DESELE
ROUWME - SELEKTION AF
Werkreis Spulenkopf
S11 PRESELEKTION
LON
DRII PAKK ROUIT
BLOK BESWAARDE
DRII PRESELEKTION
COMPLEXES DESELE
ROUWME - SELEKTION AF

Ferritkernung
FINE TUNING
WINDAGE FOR
SYNCHRON. FREQ.



Schaltstellung
SWITCHING POSITION
DIRECTION OF SELECTION
DIRECTION OF TERMINATION

- Kontakt beiderseits lang
LONG CONTACTS ON BOTH SIDES
CONTACTS LONGS SUR LES DEUX COTES
CONTACTO LUNGO SU AMBO LE PARTI
- Kontakt nur auf der Bauelementseite lang
LONG CONTACTS ONLY ON COMPONENT SIDE
CONTACTS LONGS SEULEMENT SUR LE COTE DE L'ELEMENT
CONTACTO LUNGO SOLO SUL LATO COMPONENT
- Kontakt nur auf der Grundplattenseite lang
LONG CONTACTS ONLY ON PRINTED CIRCUIT SIDE
CONTACTS LONGS SEULEMENT SUR LE COTE DE SOUDURES
CONTACTO LUNGO SOLO SUL LATO DELLA PIASTRINA STAMPATA
- Kontakt beiderseits kurz
SHORT CONTACTS ON BOTH SIDES
CONTACTS COURTS SUR LES DEUX COTES
CONTACTO CORTO SU AMBO LE PARTI

Weiterbereich
WAVE BANDS
BANDS D'ONDES
BANDS D'ONDE

LW LW-60 OL	165	400kHz
MW/MW-60 OL	510	1620kHz
NW SW-OL-OL	5.9	0.2MHz
NW-SW-OL-OL	6.1	16 MHz
LW-FM-FM-FM	97.5	100 MHz

Ferritkernung
FERRITE KERNEL
ANTENNE FERRITE
ANTENNA DI FERRITE

FM-Mischer
FM MIXER
MELANGEUR FM
PARTE MISCE-ALTE-FM

W/RF-Modul
W/RF PRINTED BOARD
PLAQUE W/RF
PIASTRA AF-RF

Spannungen mit Grundfrequenzteil auf den Netzteil
VOLTAGE MEASURED WITH GRUNDIG FREQUENCY PART ON THE POWER SUPPLY
VOLTAGE AND CURRENT VALUES ARE VALID WITH NO SIGNAL APPLIED AND CLOSED VARIABLE CAPACITOR

VOLTAGES MEASURED WITH GRUNDIG WITH AN OPERATING VOLTAGE OF 9V IN THE RANGES 16-31.7V
VOLTAGE AND CURRENT VALUES ARE VALID WITH NO SIGNAL APPLIED AND CLOSED VARIABLE CAPACITOR

Spannungen mit Grundfrequenzteil auf den Netzteil
VOLTAGES MEASURED WITH GRUNDIG FREQUENCY PART ON THE POWER SUPPLY
VOLTAGE AND CURRENT VALUES ARE VALID WITH NO SIGNAL APPLIED AND CLOSED VARIABLE CAPACITOR

SEMPRE MISURE CON GRUNDIG VOLTAZZA A LONDS SU CEMPS DE MESURE DE TENSION DI UNA SENSA DI SEGNO. LES VALEURS SONT VARIABLES AVEC LE CONDENSATEUR VARIABLE FERME ET SANS SIGNAL D'ANTENNE

SEMPRE MISURE CON VOLTAZZA OPERAZIONE CON 9V CON UNA TENSIONE DI LANCIA DI 9V. I VALORI SONO VALIDI SENZA SEGNO SENZA SIGNAL D'ANTENNA

Greenwich Station Dept. App
SOMMA 4 CPT. POSIZIONE
MONTE EN POSITION APPAREIL
APPAREIL REPRESENTADO IN POSIZIONE SPENTA

Druckfertigpreis 8 Fach
PRESSURE SET. 8 FUNCTIONS
CLAVIER 8 FONCTIONS
PIASTRA A 8 FATTI

Änderungen vorbehalten
ALTERATIONS RESERVEES
MODIFICAZIONI RISERVATE
CON RISERVA DI MODIFICA

C	14	15	17	11	23	25	26	31a	31b	31c	31d	31e	31f	31g	31h	31i	31j	31k	31l	31m	31n	31o	31p	31q	31r	31s	31t	31u	31v	31w	31x	31y	31z	32	33	34	35	36	37	38	39	40	41	42	43	44	45	46	47	48	49	50	51	52	53	54	55	56	57	58	59	60	61	62	63	64	65	66	67	68	69	70	71	72	73	74	75	76	77	78	79	80	81	82	83	84	85	86	87	88	89	90	91	92	93	94	95	96	97	98	99	100
R	1	2	3	4	5	6	7	8	9	10	11	12	13	14	15	16	17	18	19	20	21	22	23	24	25	26	27	28	29	30	31	32	33	34	35	36	37	38	39	40	41	42	43	44	45	46	47	48	49	50	51	52	53	54	55	56	57	58	59	60	61	62	63	64	65	66	67	68	69	70	71	72	73	74	75	76	77	78	79	80	81	82	83	84	85	86	87	88	89	90	91	92	93	94	95	96	97	98	99	100		

