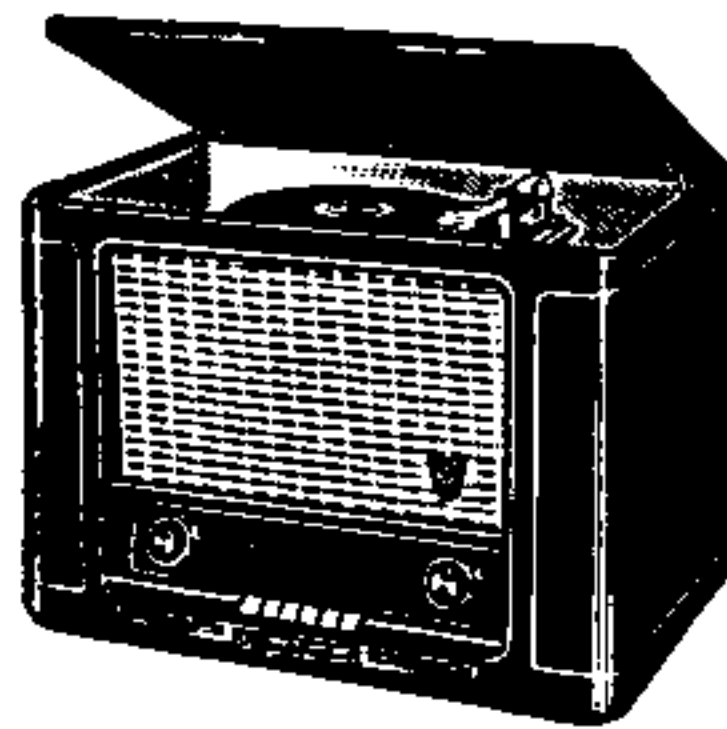


# GRUNDIG Repair Manual



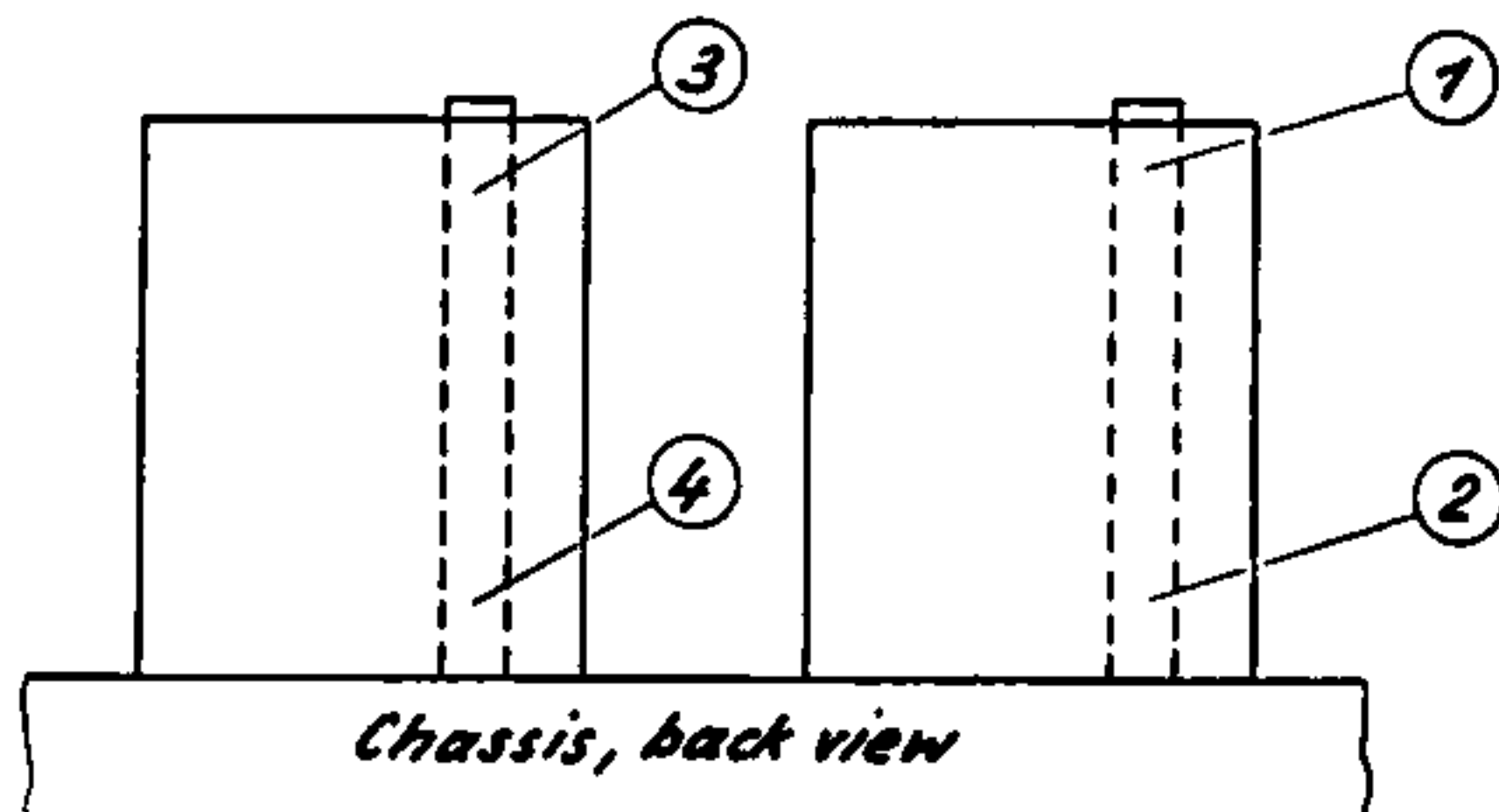
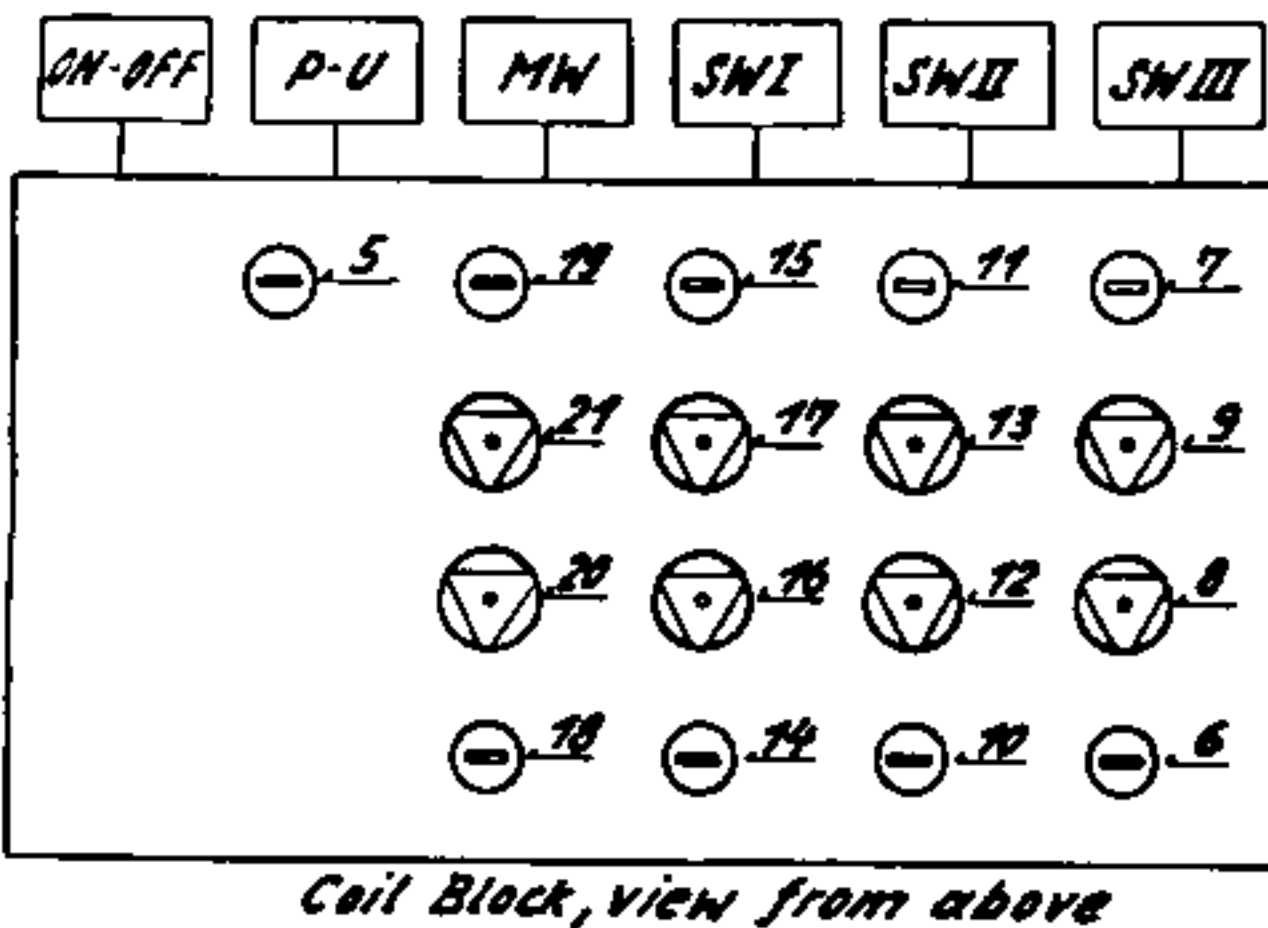
**2041 WE-Ph**

## Alignment Table

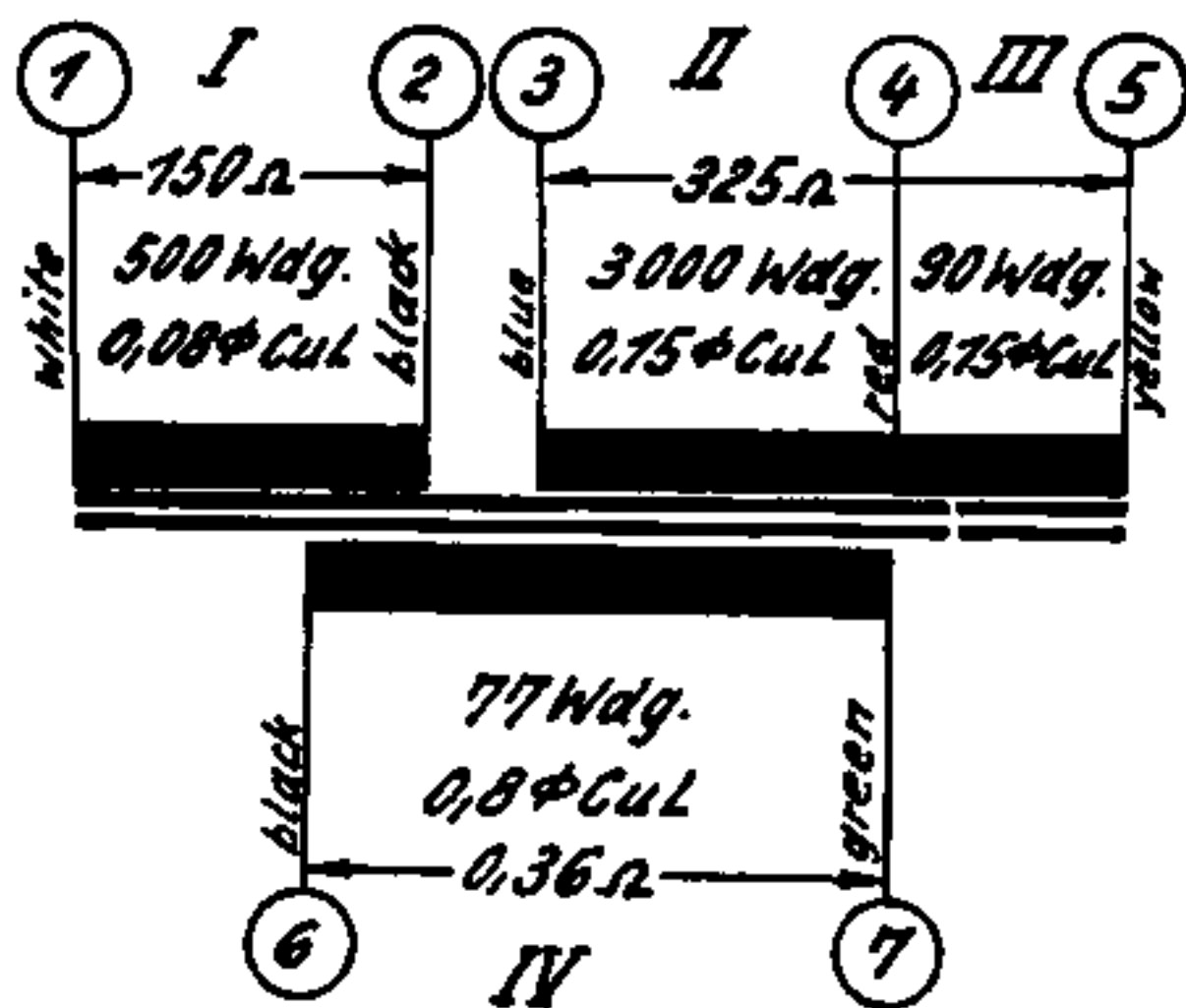
Met dank aan Jaap Woltersen

Indicator stop at mark 2 Mc

Sequence of Alignment	Signal Generator Frequency	Position of Indicator on the Dial and Wave Range	Coupling of Signal Generator	Aligning and Indication	Remarks
IF-Circuits	468 kc	Tuning Condenser turned in SW-I-Range	50 nF to 1. grid of IF-amplifying tube	(1) (2) Cores to external Maximum	During alignment damp circuits alternately with 5 nF + 10 KOhm in series
			50 nF to grid of mixing tube	(3) (4) Cores to external Maximum	
IF-Absorber circuit		Tuning Condenser turned in MW-Range		(5) to internal Minimum	Locking depth appr.
Oscillator and precircuits SW III	13,5 Mc	13,5 Mc	Phantom aerial to aerial and ground sockets	(6) Cores to external Maximum	Volume control open fi < fo  The aligning is to be done in such sequence that the aligning frequencies appear at the given positions on the dial.  Repeat aligning a few times and end with trimmer
	21,5 Mc	21,5 Mc		(7) Cores to internal Maximum (8) (9) Trimmer to Maximum	
Oscillator and precircuits SW II	6,5 Mc	6,5 Mc		(10) (11) Cores to external Maximum	
	12,5 Mc	12,5 Mc		(12) (13) Trimmer to Maximum	
Oscillator and precircuits SW I	2,2 Mc	13,5 Mc		(14) (15) Cores to external Maximum	
	5,5 Mc	5,6 Mc		(16) (17) Trimmer to Maximum	
Oscillator and precircuits MW	550 kc	550 kc		(18) Cores to Maximum	
	1500 kc	1500 kc	(19) Cores to internal Maximum (20) (21) Trimmer of Maximum		



### Output Transformer BV60/73



### Mains Transformer BV78/62

