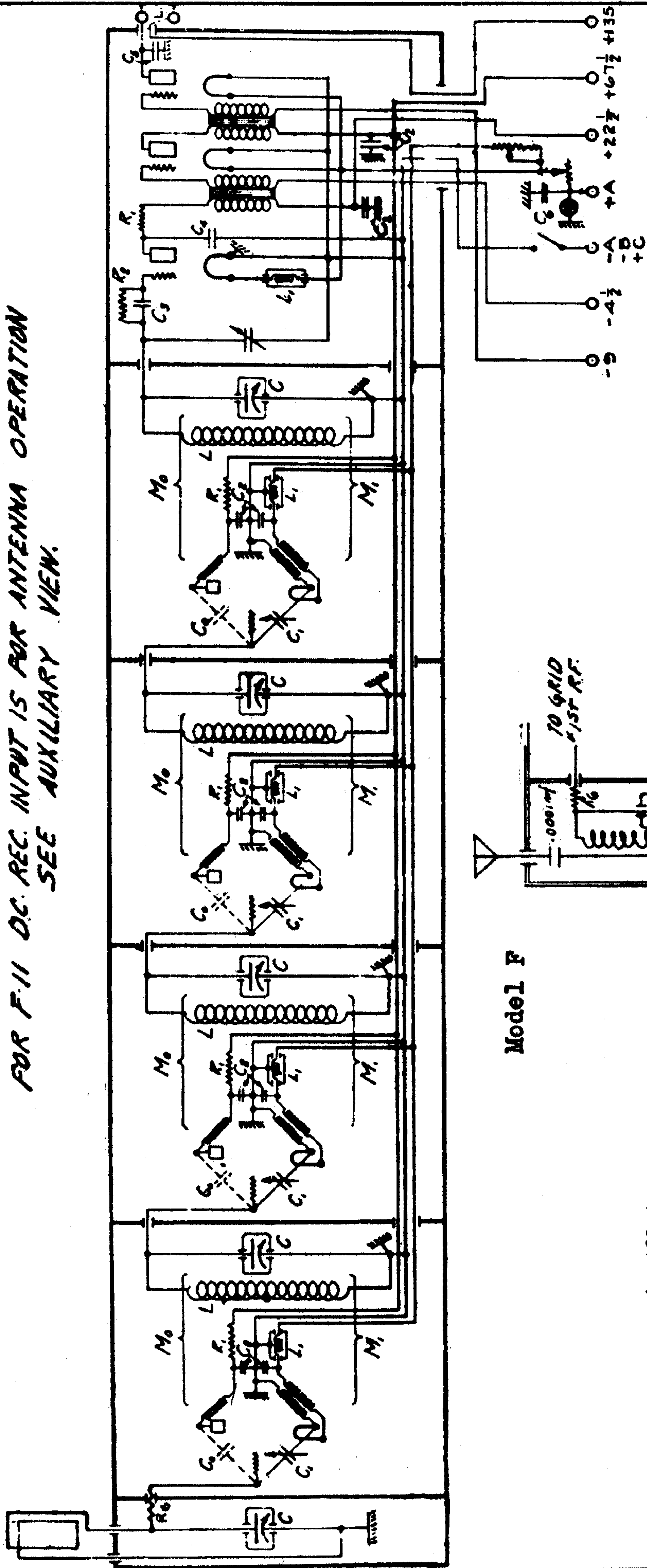
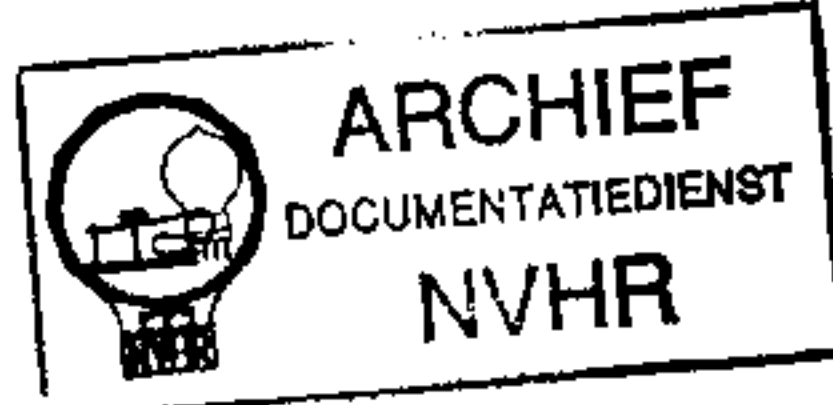


NOTE FOR F-10 DC REC. INPUT IS FOR LOOP OPERATION AS SHOWN  
FOR F-11 DC REC. INPUT IS FOR ANTENNA OPERATION  
SEE AUXILIARY VIEW.



Ned. Ver. v. Historie v/d Radio



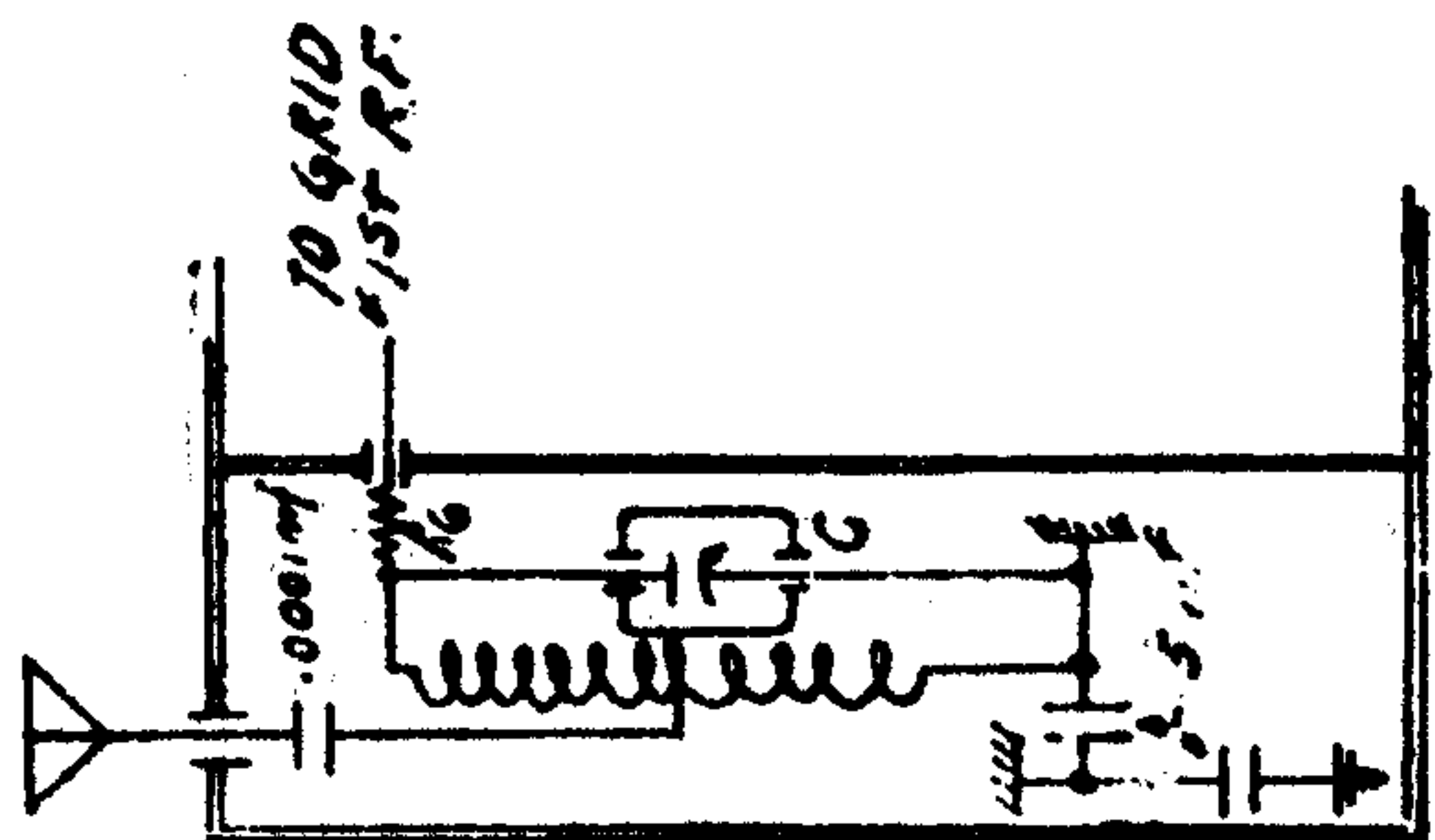
3964

F-10, F-11, F-40

CX-301A	CX-301A	CX-301A	CX-301A	CX-301A	CX-301A	CX-371A
CX-300A	CX-301A	CX-301A	CX-301A	CX-301A	CX-301A	CX-312A
CX-112A						

(Batt.)  
-9 -4 1/2 -A -B +C  
+22 1/2 +67 1/2 +135

CX-300 tubes with a CX-320 in socket No. 7 may be used when storage battery or eliminator operation is not practical.



Model F

- L = 100 μH
- C = 565 μF (MAX)
- C<sub>1</sub> = 9
- C<sub>2</sub> = 42 "
- M<sub>0</sub> = 85.5 μH
- M<sub>1</sub> = 5.75 μH
- C<sub>3</sub> = 1 μF
- R<sub>1</sub> = 200 Ω (VERY LOW CAPACITY)
- R<sub>2</sub> = 1,000,000 Ω
- C<sub>4</sub> = 200 μF
- C<sub>5</sub> = 1,000 μF
- C<sub>6</sub> = 5,000 μF
- L<sub>1</sub> = 360 μH
- C<sub>7</sub> = 2 μF
- R<sub>6</sub> = 900 Ω

125 VS 4 10-3 CB  
ANT. UNIT ADDED FOR F-11  
ISSUE 2 OF 21-28  
ADDED RC TO LOOP STAGE  
ISSUE 1 4-10-26  
C<sub>1</sub> transferred from  
tab 1 to 22 lead 4/26/28