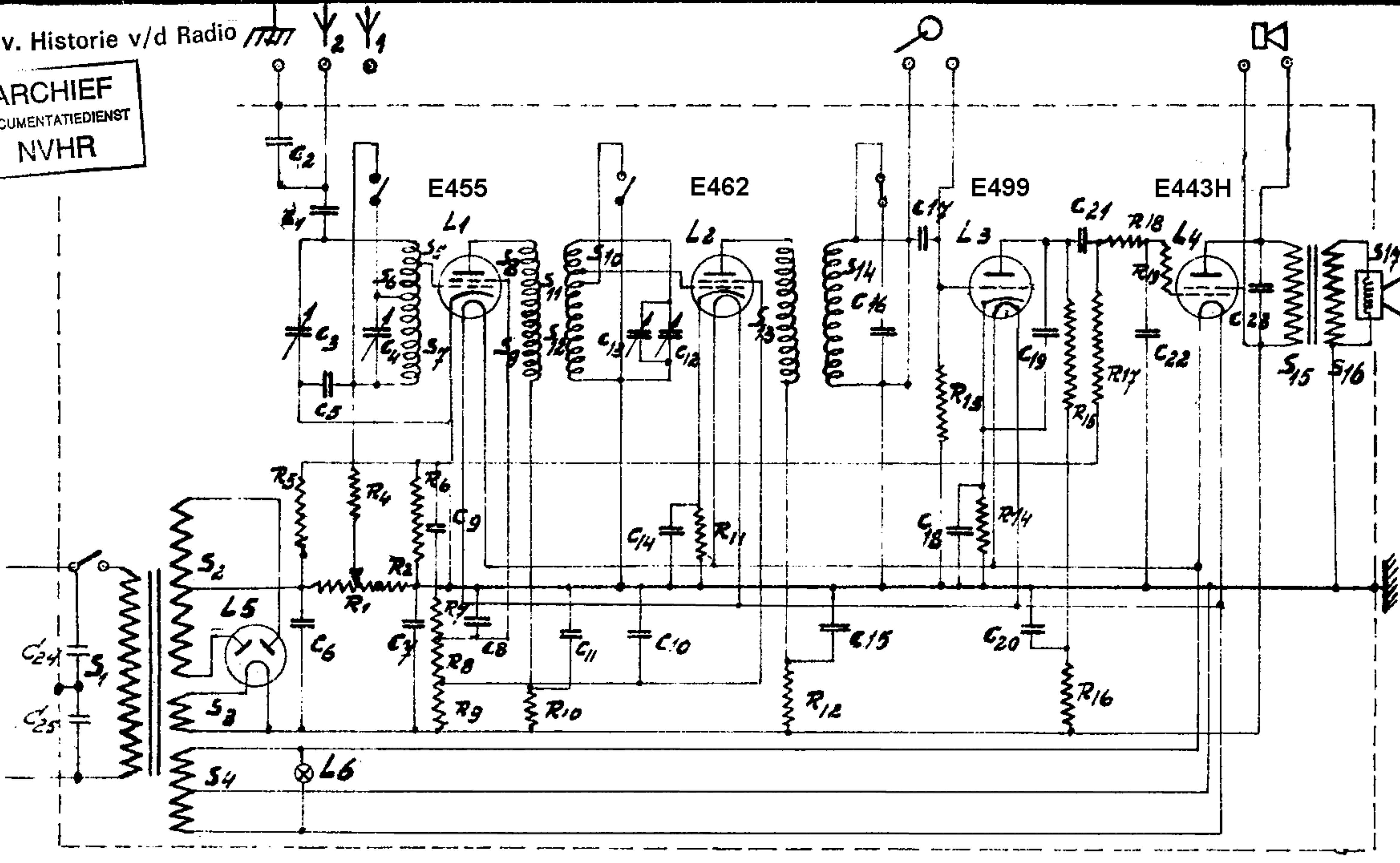


ARCHIEF  
DOCUMENTATIEDIENST  
NVHR



SPOELEN	CODE Nr.	CONDENSATOREN	CODE Nr.	WEERSTANDEN.	CODE Nr.
S1 = UNIV. SPOEL	25649941	C1 = 20 μF	25114540 G	R1 = 1000 Ω	GK.80812
S2 = 2x 1640 W.		C2 = 100 "	25112630	R2 = 40 "	25721230
S3 = 28 "		C3 = 430 "	GK830030	R4 = 1,6 MΩ	25722290
S4 = 2x 14 "		C4 = 23 "	25115410		
S5 = 70 "		C5 = 0,1 μF	25115330	R5 = 2 "	2740
S6 = 46 "		C6 = 16 "	25116040	R6 = 2 "	2740
S7 = 192 "		C7 = 16 "	25116040	R7 = 64000 Ω	2190
S8 = 54 "		C8 = 0,1 "	25115330	R8 = 32000 Ω	2280
S9 = 196 "		C9 = 0,25 "	25115300	R9 = 32000 Ω	2280
S10 = 48 "		C10 = 0,1 "	25115300	R10 = 10000 "	2690
S11 = 72 "	C11 = 0,1 "	25115330	R11 = 640 "	2240	
S12 = 196 "	C12 = 430 μF	GK830030	R12 = 10000 "	2690	
S13 = 240 "	C13 = 23 "	25115410	R13 = 0,1 MΩ	2710	
S14 = 240 "	C14 = 0,25 μF	25115300	R14 = 16000 Ω	2430	
S15 = 4000 "	C15 = 0,25 μF	25115300	R15 = 0,32 MΩ	2630	
S16 = 54 "	C16 = 640 μF	25112850	R16 = 0,1 MΩ	2710	
S17 = 49 "	C17 = 2000 μF	25113110	R17 = 1 MΩ	2730	
	C18 = 1 μF	25115300	R18 = 0,1 "	2710	
	C19 = 640 μF	25112850	R19 = 0,1 "	2710	
	C20 = 0,5 μF	25115300			
	C21 = 2000 μF	25113110			
	C22 = 50 μF	25112470			
	C23 = 8000 μF	25113280			
	C24 = 500 μF	25113070			
	C25 = 500 μF	25113070			

LAMPEN.	BIJBEHOORENDE GEGEVENS.
L1 = E 455	C9, 10, 14, 15, 18, 20 = COND. VAN 25115300.
L2 = E 462	
L3 = E 499	
L4 = E 443H.	
L5 = 1823	
L6 = 6V. 0,3A.	LUIDSPREKER 2161.

Auteursrecht volgens de wet voorbehouden

Titel: KY 126. <b>PRINCIPE SCHEMA</b> <b>2 KRINGS ONTVANGAPP.</b>	Opmerkingen: GEWIZIGD. 15-5-'33. M. " 16-9-'33. G. " 24-8-'33. G.	<b>A 4</b>
---	--	------------

	25 = ± 0,5 25,0 = ± 0,2 25,0 = ± 0,05	Schaal: Get. <i>[Handwritten]</i> Gez. <i>[Handwritten]</i>	S 00126
	N.V. Radiofabriek en Ingenieursbureau v/h <b>VAN DER HEEM en BLOEMSMA</b>		

C18  
(1 uF)

C10  
(.1 uF)

C9  
(.25 uF)

C15  
(.25 uF)

C14  
(.25 uF)

C20  
(.5 uF)

