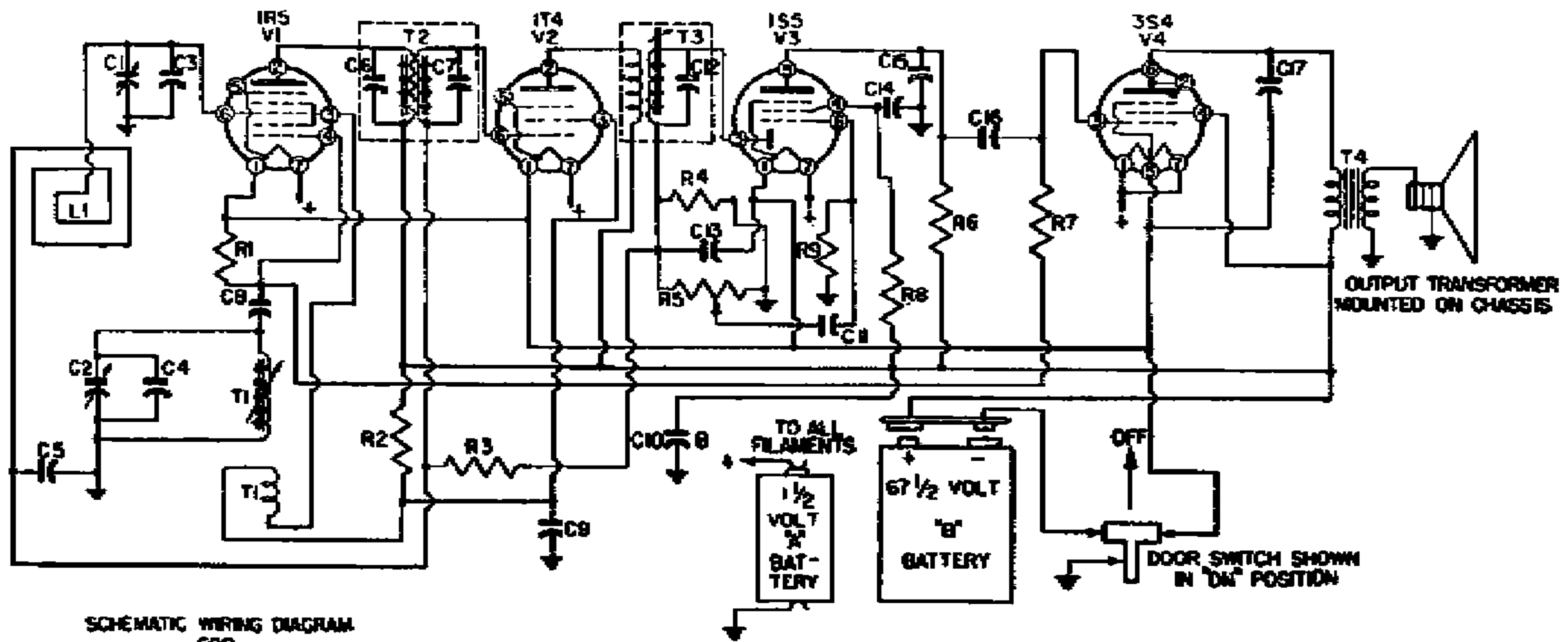
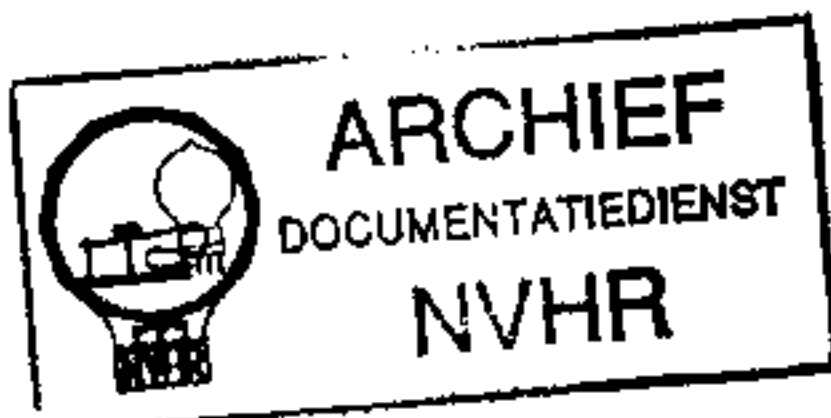


EMERSON RADIO & PHONO. CORP.

NO. 950005



SCHEMATIC WIRING DIAGRAM FOR CHASSIS NO. 120008

FREQUENCY RANGE: 540-1600 kc.

NUMBER OF TUBES: Four.

TYPE OF TUBES:

- 1—1R5, oscillator-modulator
- 1—1T4, i-f amplifier
- 1—1S5, 2nd detector, a.v.c., a-f amplifier
- 1—3S4, pentode output

POWER SUPPLY: "A" and "B" batteries.

VOLTAGE RATING:

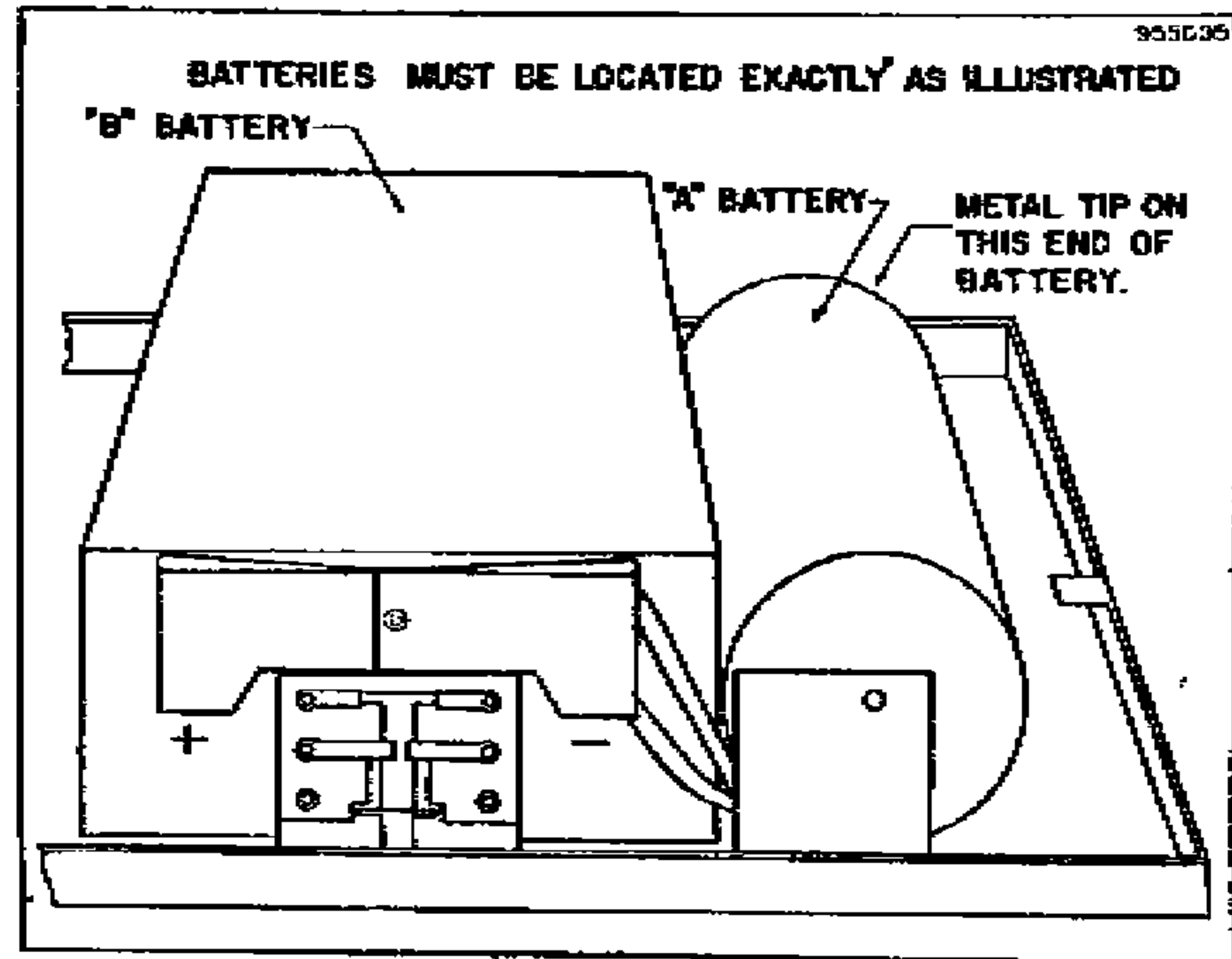
- "A" Battery—1.5 volts
- "B" Battery—67.5 volts

CURRENT DRAIN:

- "A" Battery—0.25 amp.
- "B" Battery—0.0075 amp.

The receiver is turned on when the door is open and turned off when the door is closed.

1. Slide the button on the catch near the handle in the direction of the arrow. This loosens the rear cover, making the batteries accessible.
2. Insert batteries as shown in the accompanying diagram.
3. To reassemble fit the two slats on the end of the plastic shell opposite the handle to the tongues on the lower end of the metal frame. Keep the "B" battery in place.
4. Carefully close the shell until it fits and catches in place.



VOLTAGE ANALYSIS

The following voltage readings are d-c measurements taken from B— (chassis) to the indicated tube-socket pin. A 1000 ohm-per-volt meter should be used for all readings except those indicated by an asterisk (*), which should be taken with a d-c vacuum-tube voltmeter. Take readings with the volume control set at minimum and the variable condenser closed. Use fresh batteries.

TUBE	PIN NUMBER						
	1	2	3	4	5	6	7
1R5		67.5	40	*7.0		*0.3	1.5
1T4		67.5	40			*0.3	1.5
1S5			*0.35	*16.5	*39	*0.3	1.5
3S4	1.5	65	*7.0	67.5		65	1.5

EMERSON RADIO & PHONO. CORP.

MODELS 505, 523

MODEL 508

FOR BATTERY OPERATION:

Insert plug in socket on chassis. Place hanked cord into space under shelf.

IMPORTANT

Remove batteries from receiver as soon as they are exhausted.

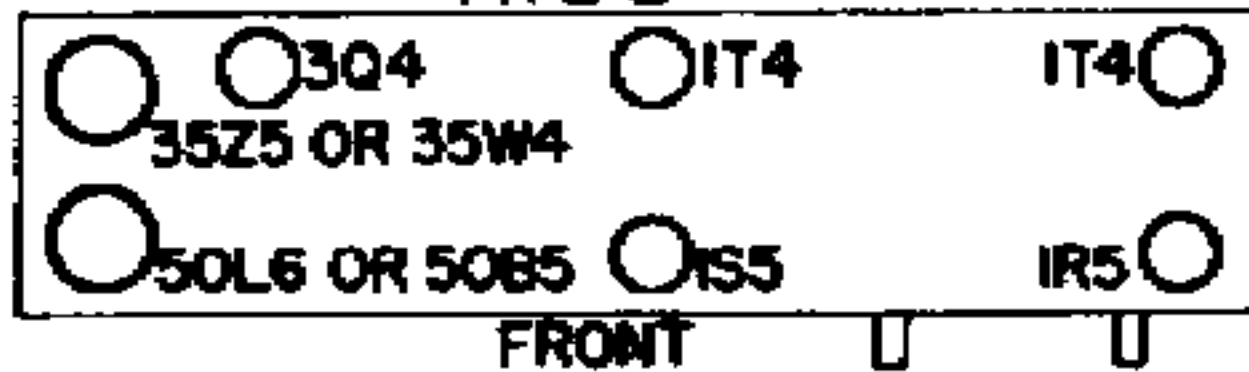
Batteries for Use with this Receiver

Mfr.	4½ V. "A"	45 V. "B"
Eveready	746 2 required	482 Minimax 2 required
Ray-O-Vac	P-83A or EM-83 2 required	—
Burgess	G3 2 required	—

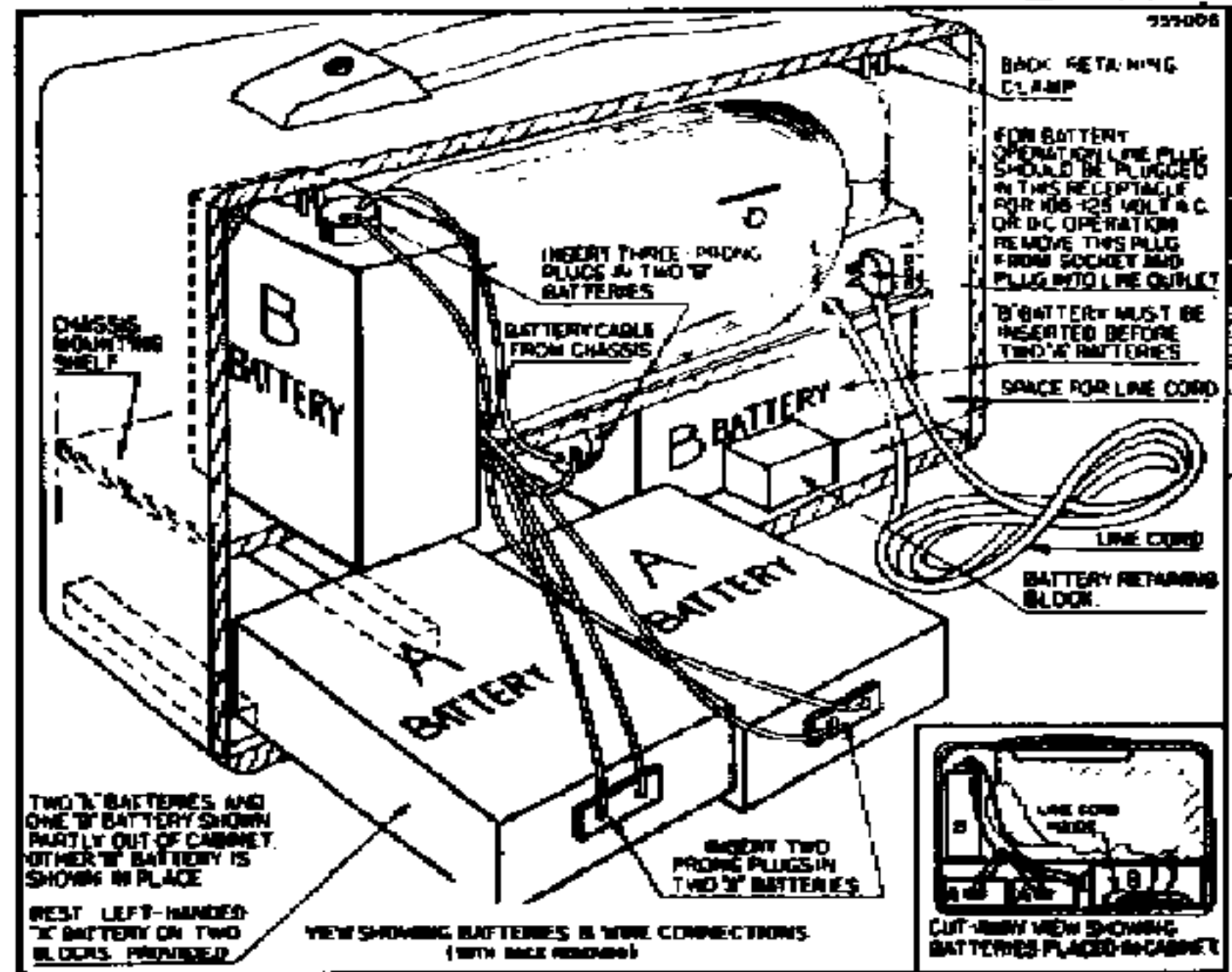
FOR 105-125 V. A.C. OR D.C. OPERATION:

Remove plug from chassis and insert it in wall outlet. On d.c. if set does not operate, reverse line plug in wall outlet.

TYPE 2



35Z5 AND 35W4 NOT INTERCHANGEABLE
50L6 AND 50B5 NOT INTERCHANGEABLE

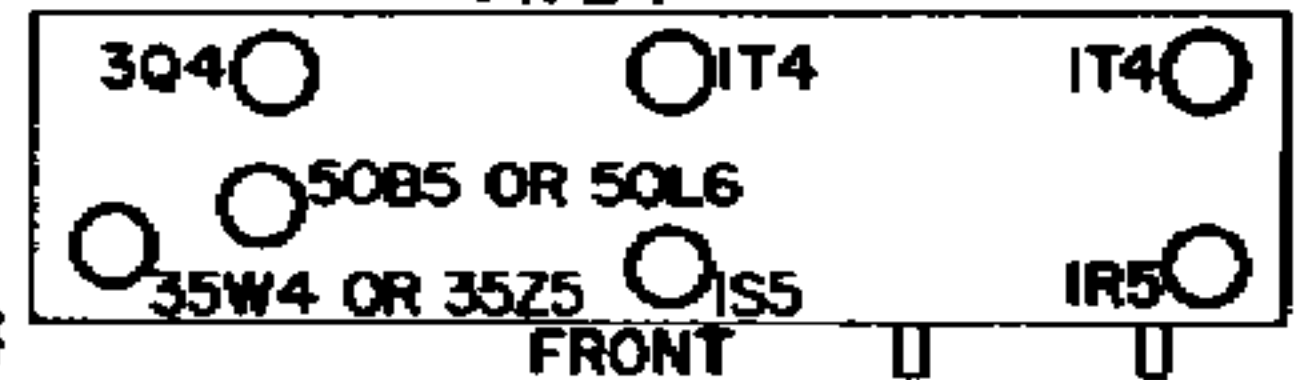
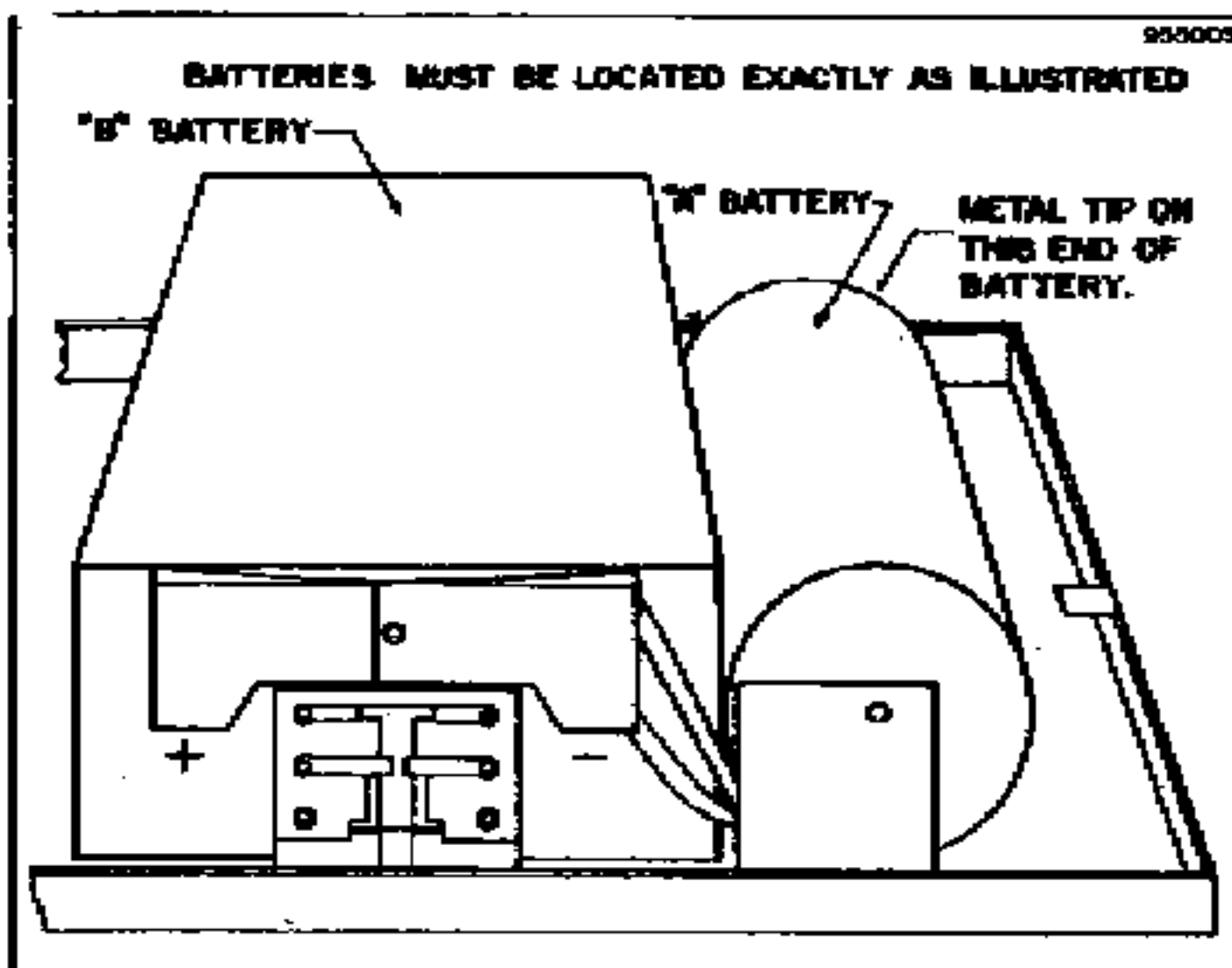
**BATTERY INSTALLATION**

NOTE: Plug with Red Lead Should be connected to "B" Battery at Side of Chassis.

TUBE LOCATIONS

MODELS: 505, 523 7 TUBES

TYPE 1

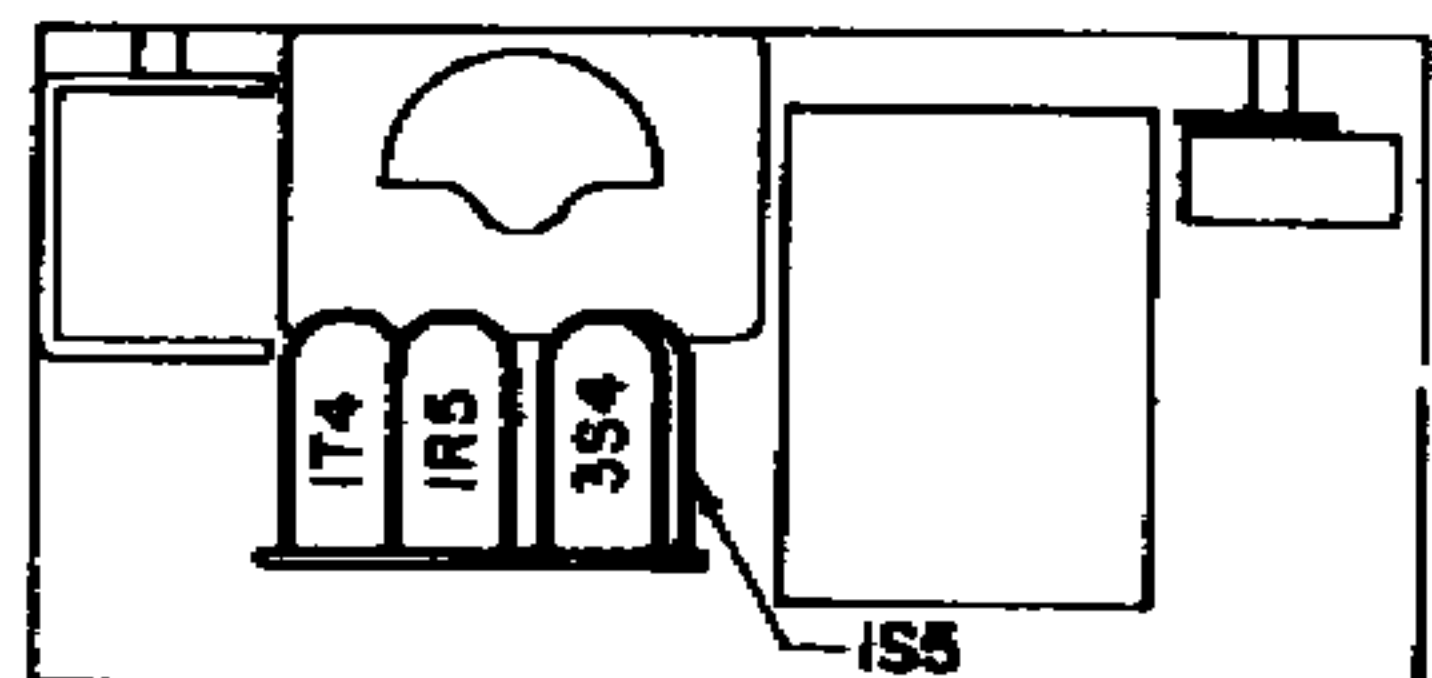
**EMERSON RADIO MODEL 508****BATTERIES USED IN THIS RECEIVER**

TYPE	MANUFACTURER'S NUMBER
1½ Volt "A"	Standard "D" size (1½" diameter) flashlight unit cell.
67½ Volt "B"	Eveready Minimax No. 467.

IMPORTANT: Remove batteries as soon as they are exhausted. The "A" battery will require more frequent replacement than the "B" battery.

TO REASSEMBLE THE CASE

1. Hold the chassis face down with the batteries in place and the plastic door open.
2. Note the two tongues at one end of the metal front. Place the plastic housing over the chassis so that these two tongues fit into the corresponding slots at one end of the plastic housing.
3. Press the other end of the housing so that it snaps into place.

TUBE LOCATIONS

BACK

955043