

MODEL RP350 is a portable, A.C. mains-operated record player for the reproduction of single standard or long-playing records. A Collaro "Junior" four-speed record player is employed. The printed circuit amplifier utilises a single triode-pentode valve, with negative feedback.

MAINS SUPPLY : 200-250 Volts A.C. 50 c/s.

MAINS CONSUMPTION : 30 Watts.

MAINS ADJUSTMENT : The mains transformer input adjustment panel tapings must be correctly set for the voltage of the mains supply before the player is connected. The panel is accessible after removing the small vertical panel, secured by three screws between the motor board and the rear of the loud-speaker.

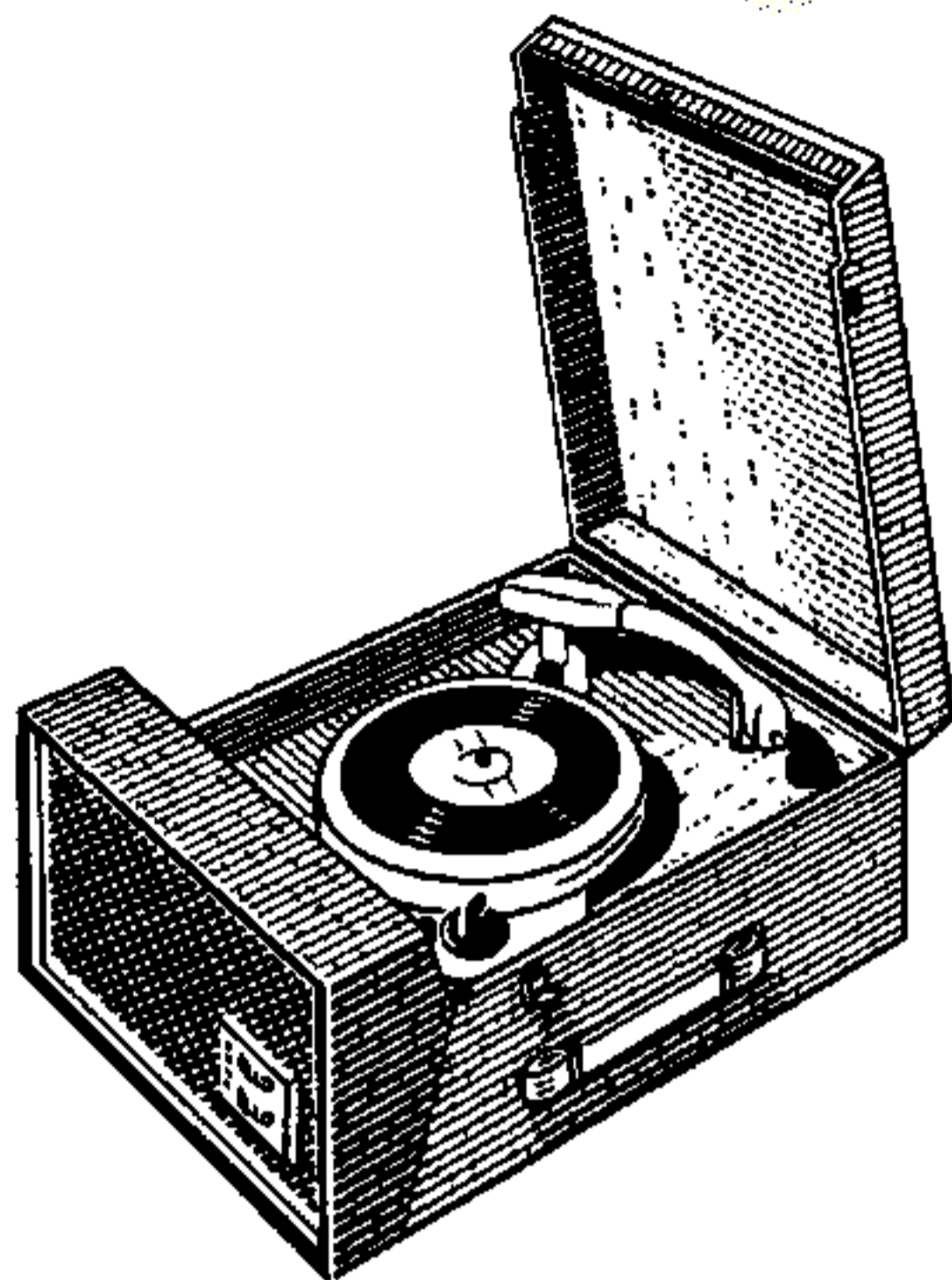
VALVE : VI-ECL82. A.F. amplifier and output.

LOUD-SPEAKER : 7" x 4" elliptical, impedance 3 ohms at 400 c/s.

OUTPUT : Approximately 2 Watts.

CONTROLS : The two edge operated controls are mounted, one above the other on the front of the cabinet. They are : Upper—TONE, Lower—ON/OFF and VOLUME.

CHASSIS REMOVAL : Disconnect the instrument from the mains supply. Valve replacement may be effected simply by removing the small vertical panel described above. Further



dismantling necessitates the removal of the vertical panel and the screws securing the motor board to the cabinet. The board and player unit may now be lifted sufficiently to permit the unsoldering of the pick-up leads, and the disconnection of the motor mains leads from the two insulated pins on the chassis. Place the motor board to one side, unsolder the loud-speaker leads, disconnect the mains leads to the ON/OFF switch. The main chassis is secured to the cabinet by three screws, accessible from the underside of the cabinet, whilst a small printed circuit chassis, carrying the controls and their associated components, is secured to the rear of the front panel by two nuts which should be removed. The two chassis may now be lifted out, care being taken to avoid damage to the single screened lead which connects them.

VOLTAGE AND CURRENT DATA :

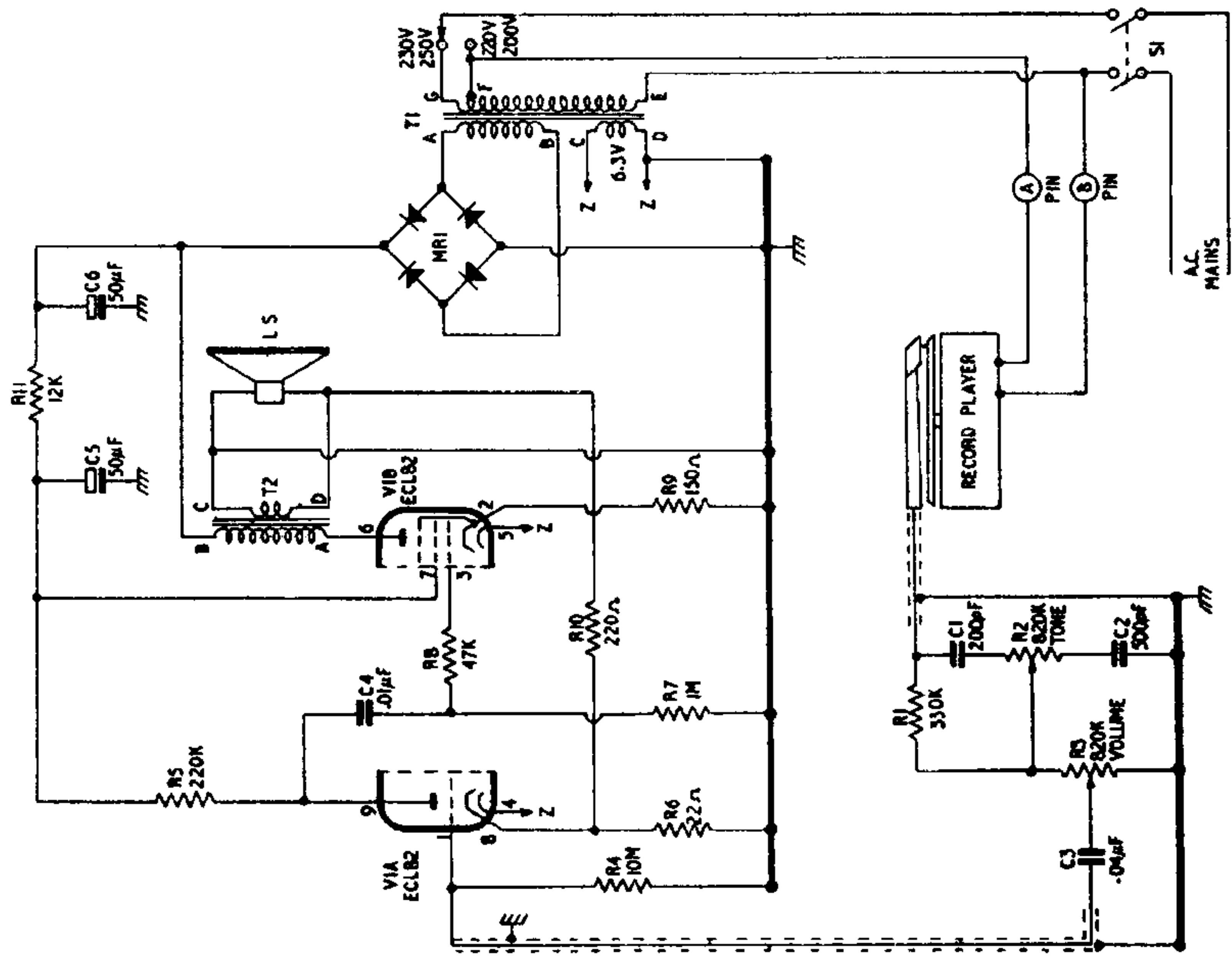
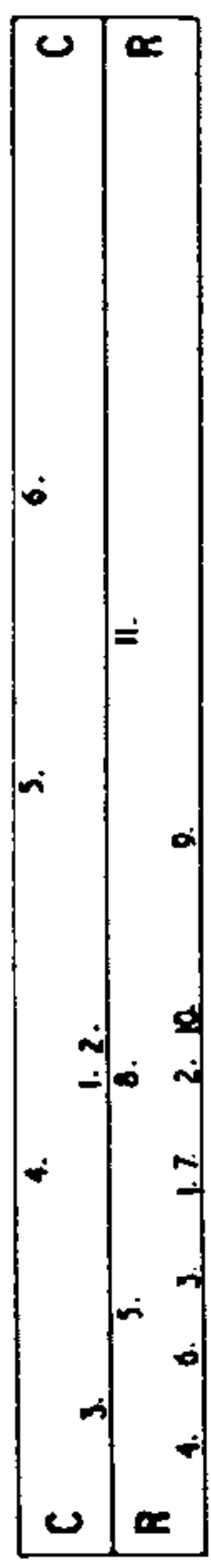
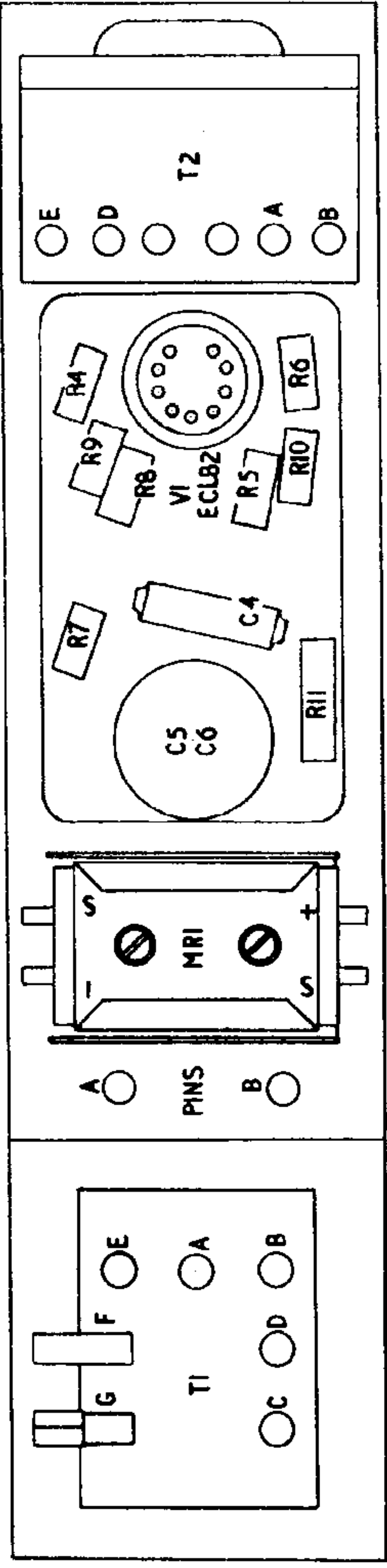
VALVE	ANODE			SCREEN			CATHODE		
	Pin	V	mA	Pin	V	mA	Pin	V	mA
VIA	9	50	0.3	—	—	—	8	—	—
VIB	6	180	35	7	114	4	2	6.2	39

D.C. RESISTANCE OF WINDINGS :

Winding	Ohms
T1 E to G	125
E to F	105
A to B	113
C to D	0.9
T2 A to B	330
C to D	0.32

CIRCUIT DESCRIPTION : The output from the pick-up is fed via the tone and volume control circuits to the grid of the triode section of the valve, which functions as an A.F. amplifier. Thence the amplifier signal passes to the grid of the pentode section operating as a normal output stage via the output transformer to the loud-speaker.

Negative feedback to the triode cathode is passed from the output transformer secondary via R10. H.T. is rectified by a full wave bridge rectifier and is resistor and capacitor smoothed. L.T. is provided by a separate winding on the mains transformer.



SERVICE DEPT., E. K. COLE LTD.,
 Somerton Works, Arterial Road,
 Southend-on-Sea.

'Phone : Southend 42296
 Head Office : Ekco Works, Southend-on-Sea



NORTHERN SERVICE DEPOT :
 115, Jersey Street,
 Ancoats, Manchester, 4.
 'Phone : Collyhurst 4421/3



MIDLAND SERVICE DEPOT :
 230-232, Highgate Road,
 Birmingham, 12.
 'Phone : Victoria 5701



SCOTTISH SERVICE DEPOT :
 17, Cadogan Street,
 Glasgow, C.2.
 'Phone : Central 3633/4