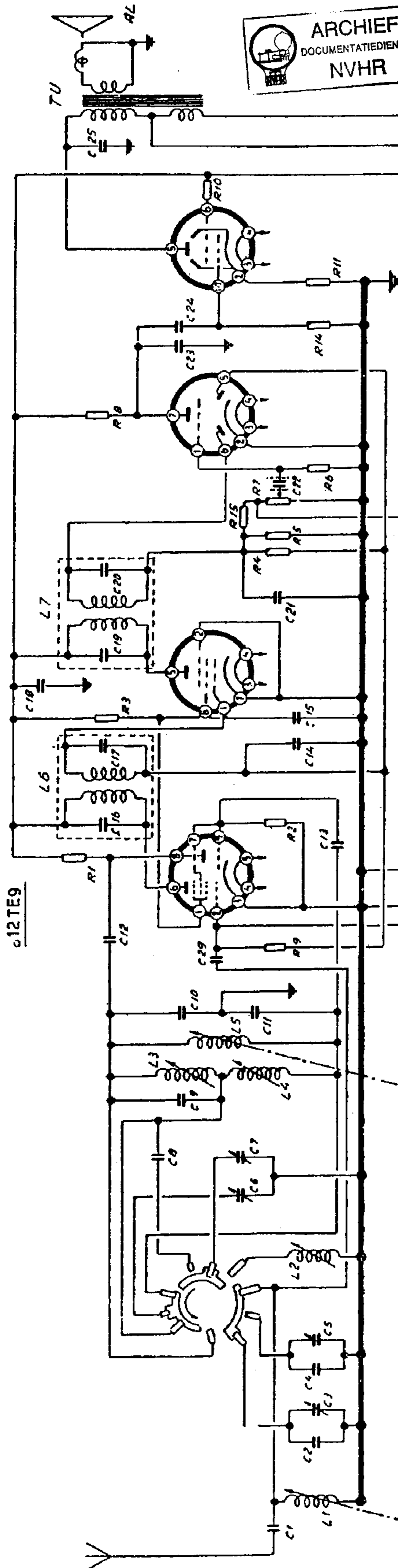


Commutatore in pos. OM. Girando nel senso della freccia si passa sul canale dei 50 metri e 25 metri.

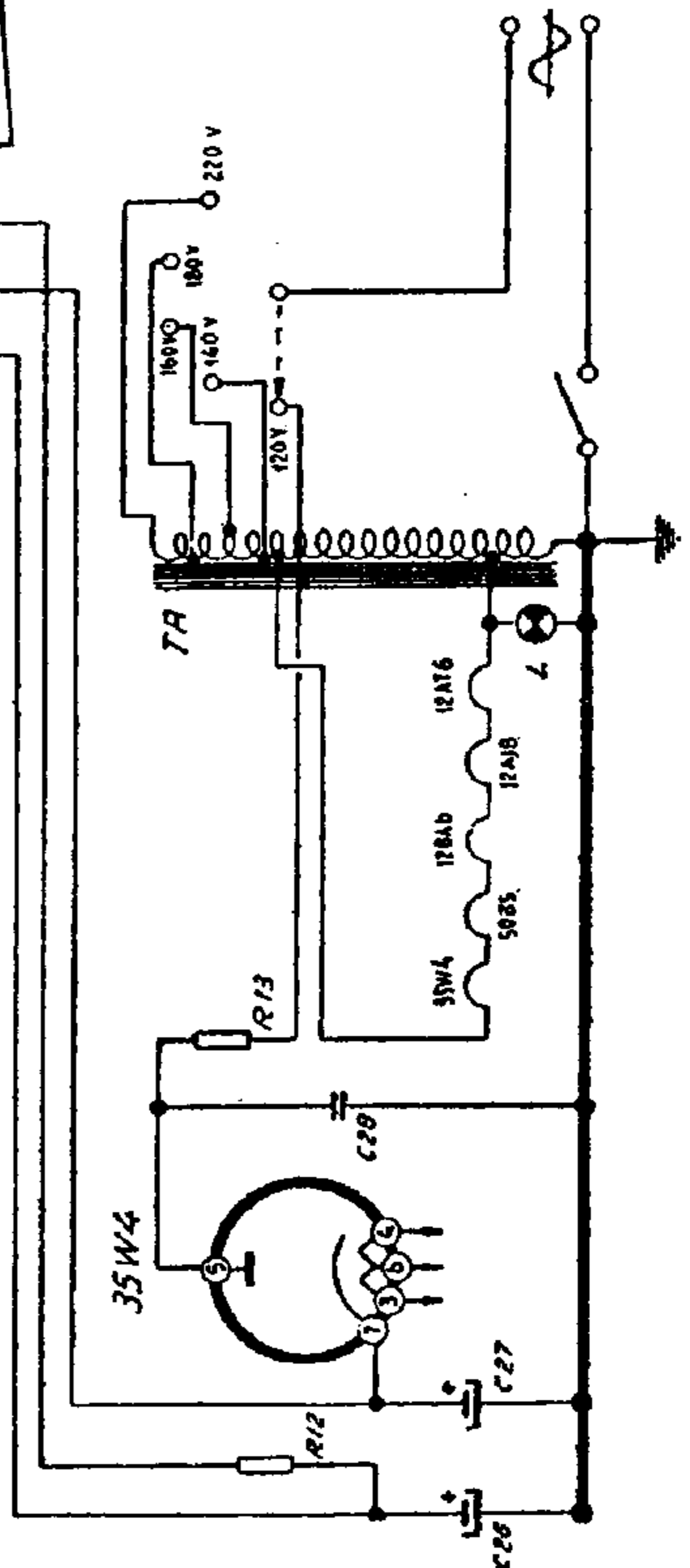
12A18 12BA6 12AT6 50B5



10	310 K Ω 0.2W	NOR 51/330K	E
15	150 K Ω 0.2W	NOR 51/150K	E
16	220 K Ω 0.2W	NOR 51/220K	E
13	20 Ω 0.6W	NOR 22/20 Ω	E
12	14 K Ω 1W	NOR 12/14K	D
11	180 Ω 0.5W	NOR 12/180 Ω	D
10	100 Ω 0.2W	NOR 51/100 Ω	E
9	470 K Ω 0.2W	NOR 51/470K	E
8	270 K Ω 0.6W	NOR 22/270K	D
7	1M Ω R29 10V	R 120 ER 20	E
6	10 M Ω 0.6W	NOR 22/10M	E
5	270 K Ω 0.2W	NOR 51/270K	E
4	22 M Ω 0.6W	NOR 22/22M	E
3	10 K Ω 0.6W	NOR 22/10K	D
2	47 K Ω 0.2W	NOR 51/47K	E
1	10 K Ω 0.6W	NOR 22/10K	D
R	Resistenze	N° Elemento	

19	220 pF	NOC 732 Q/220pF B
18	0.05 μ F	NOC 12/0.05 μ F
17	220 pF	NOC 732 Q/220pF B
16	220 pF	NOC 732 Q/220pF B
15	0.05 μ F	NOC 11/0.05 μ F
14	0.05 μ F	NOC 11/0.05 μ F
13	50 pF	NOC 712 Q/50pF B
12	150 pF	NOC 712 Q/150pF B
11	25 pF	NOC 712 Q/25pF A
10	100 pF	NOC 712 Q/100pF A
9	165 pF	NOC 712 Q/165pF A
8	80 pF	NOC 712 Q/80pF A
7	7-35 pF	
6	7-35 pF	
5	7-35 pF	
4	65 pF	NOC 712 Q/65pF A
3	7-35 pF	
2	135 pF	NOC 712 Q/135pF A
1	10 pF	NOC 712 Q/10pF A
C	Capacita	N° Elemento

32	200 pF	NOC 712 Q/200pF
31	2000 pF	NOC 11/2000pF
30	0.01 μ F	NOC 11/0.01 μ F
29	150 pF	NOC 712 Q/150pF
28	0.02 μ F	NOC 12/0.02 μ F
27	50 μ F	NOC 922
26	32 μ F	
25	5000 pF	NOC 12/5000pF
24	0.01 μ F	NOC 11/0.01 μ F
23	50 pF	NOC 712 Q/50pF D
22	0.01 μ F	NOC 61/0.01 μ F
21	100 pF	NOC 712 Q/100pF D
20	220 pF	NOC 732 Q/220pF B
C	Capacita	N° Elemento



COMPAGNIA GENERALE DI ELETTRICITA' - Mod. 1565 Radiogiollino Serie Anie. Gamme onde medie con sintonia a per-meabilita' variabile, e due gamme corte a 50 e a 25 metri. Media frequenza 468 kc/s. Potenza d'uscita 1,5 watt.

