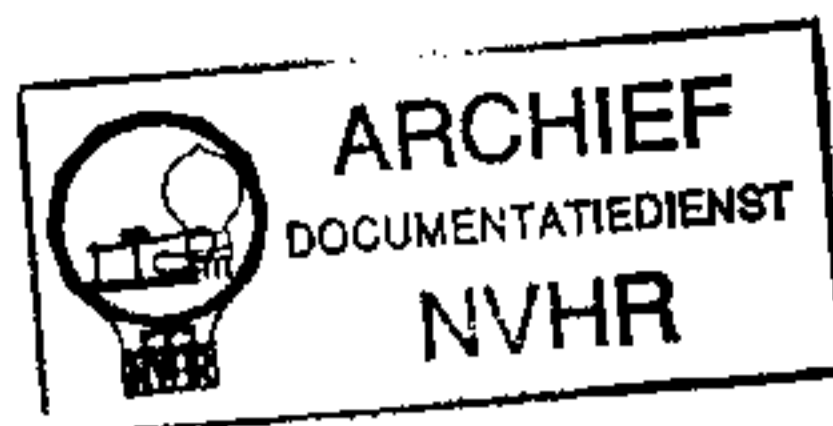


# Bang & Olufsen

Ned. Ver. v. Historie v/d Radio



**Beogram 1700, type 5731**

**Beogram 1700, type 5733**

## LIST OF TRANSISTORS AND IC's

01C1	8340049	105	LM 340T-12
		105	$\mu$ A 7812CU
		105	$\mu$ A 7812CU
		106	MC 7812

1TR1 8320097 20 BC 557B

1TR2

1TR3 8320396 24 2N5639

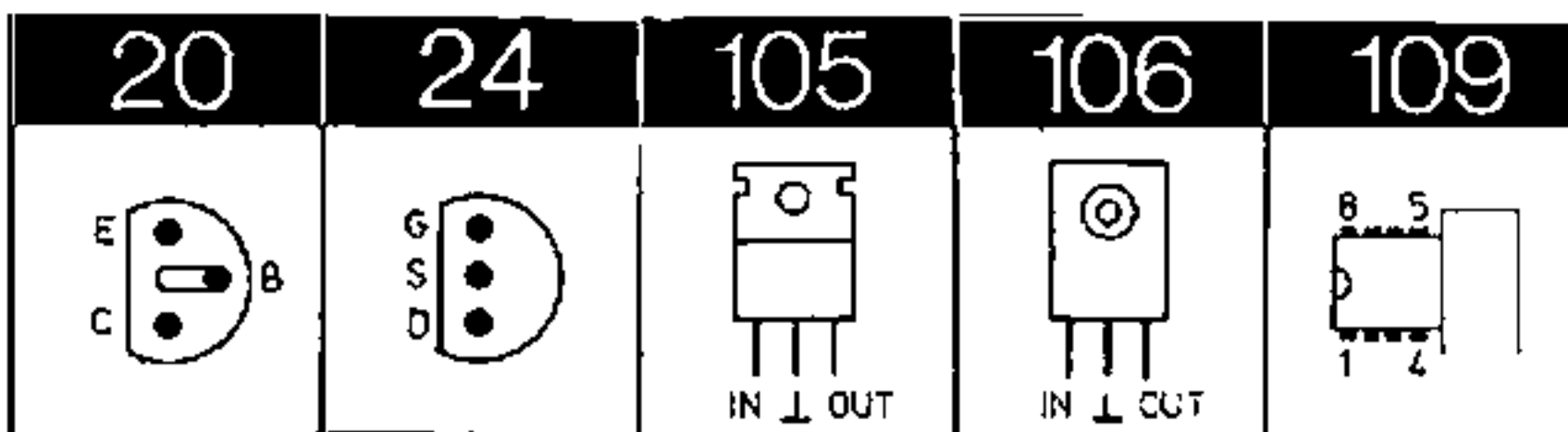
24 MPF 4392

1TR4 8320295 20 BC 337

1TR5 -25/18

1TR6 8320097 20 BC 547B

11C2 8340108 109 MHN-3P2-  
RDS



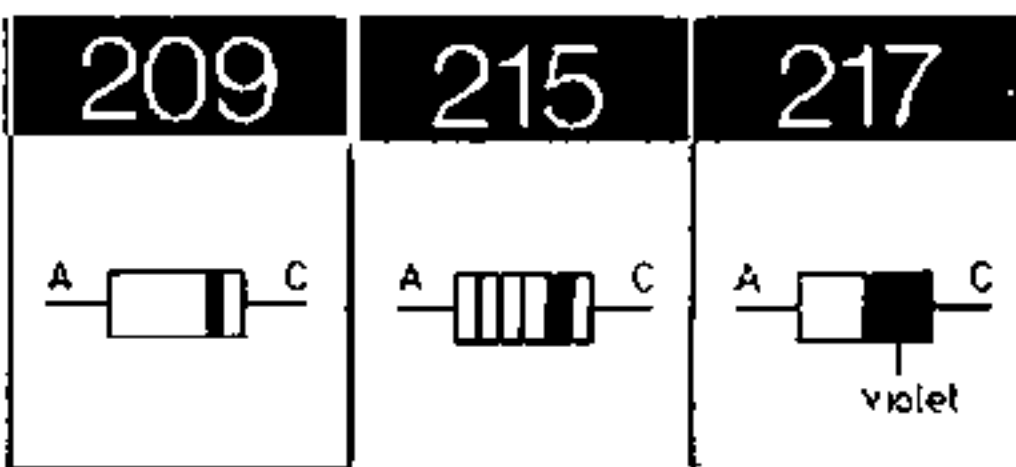
## LIST OF DIODES

1D1-4 8300023 209 1N 4002/RL  
209 1N 4003

1D5-10 8300058 217 SFD 184

215 1N 4148

209 1N 4148

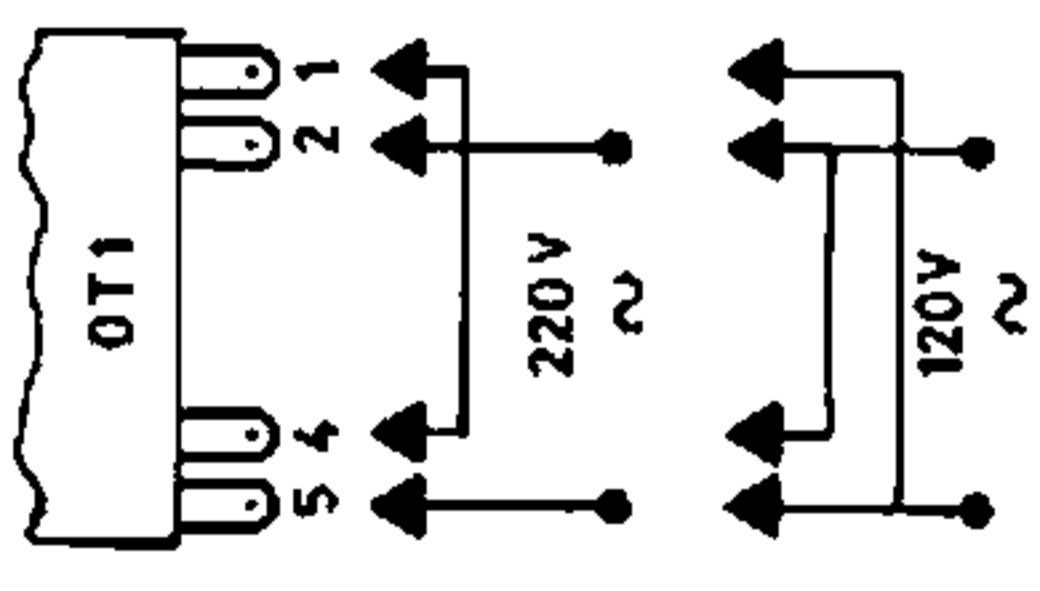


RETTELSE

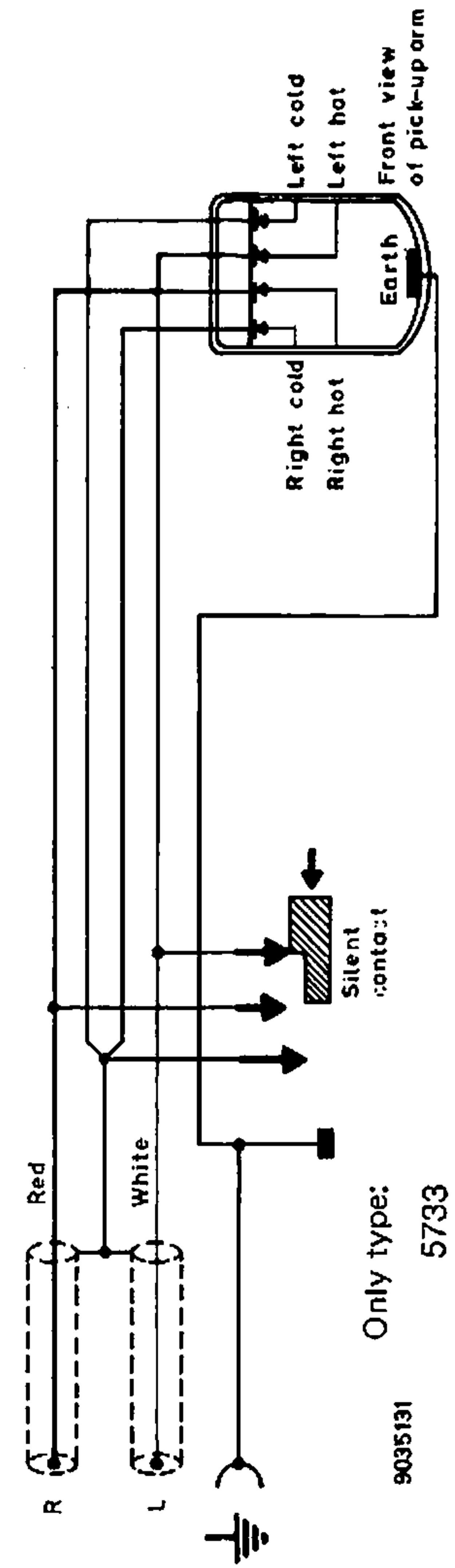
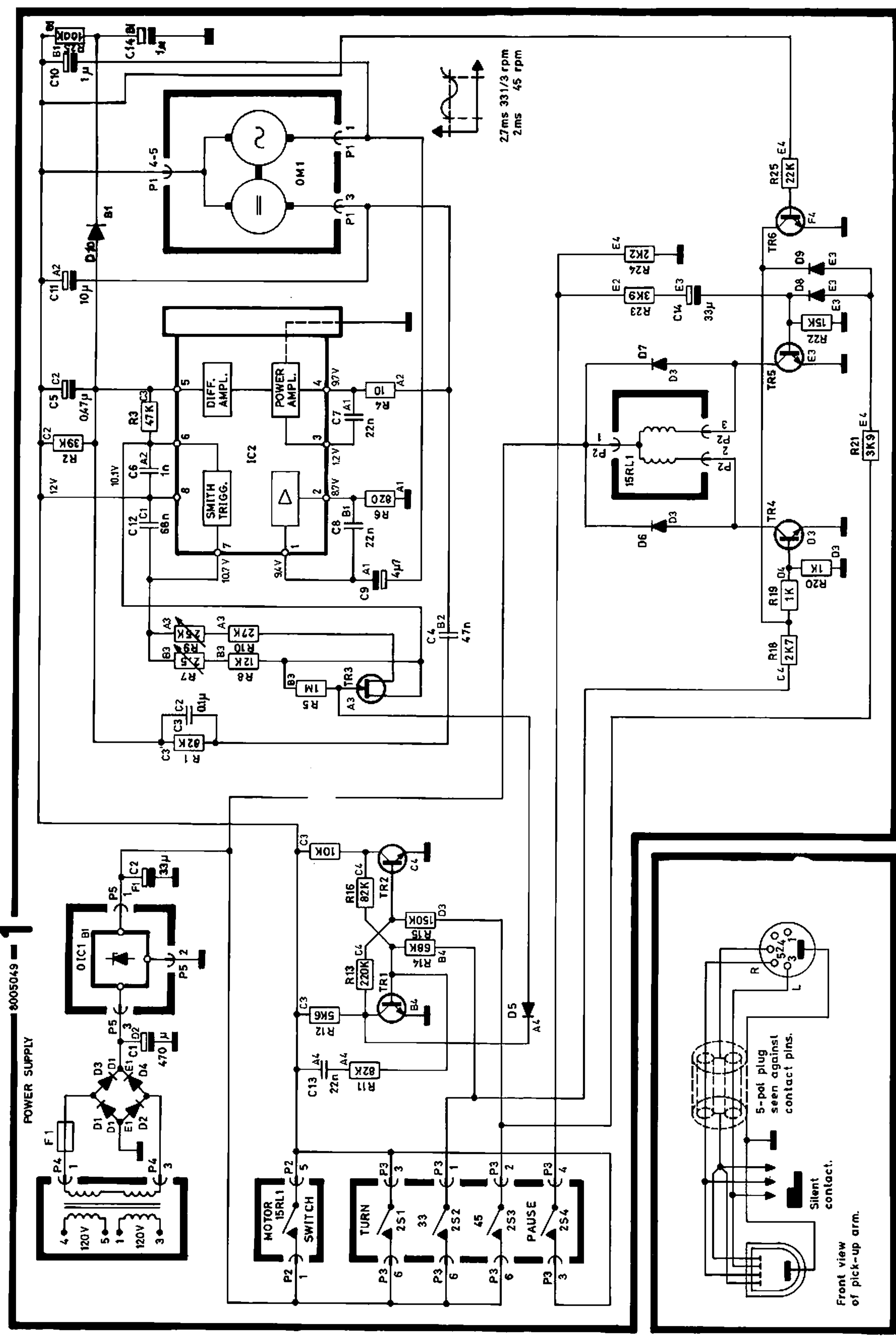
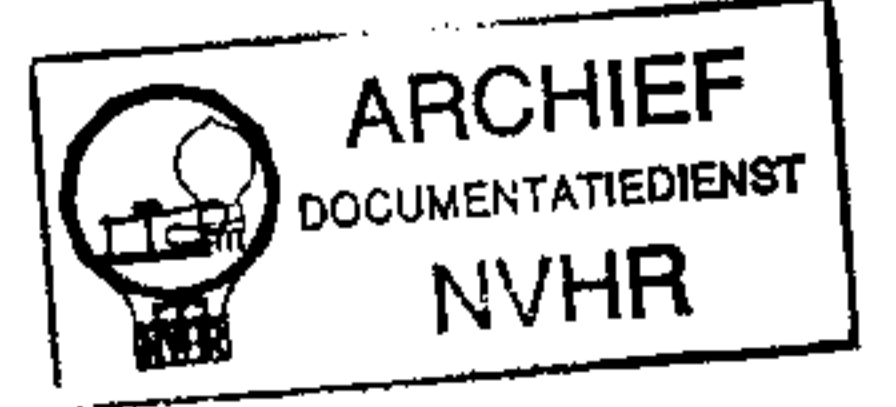
CORRECTION

BERICHTIGUNG

A	Before correction	After correction
1D10		Added
1R25		Added
1C14		Added

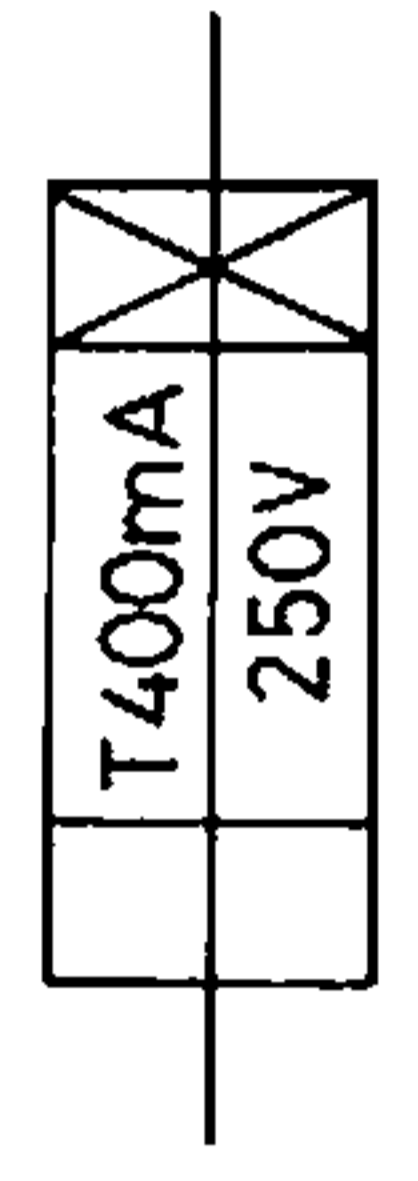


Ned. Ver. v. Historie v/d Radio



Explanation of the fuse symbols used in the set:

Explanation des symboles du fusible utilisés dans l'appareil:



Replace with same type 0.4 ampere 250 volts slow acting fuse.

Remplacer par un fusible de meme type retardé et de 0,4 ampere 250 volts.