

ATWATER KENT RADIO
MODEL 41 CHASSIS
 For Voltage Table, See Page 106

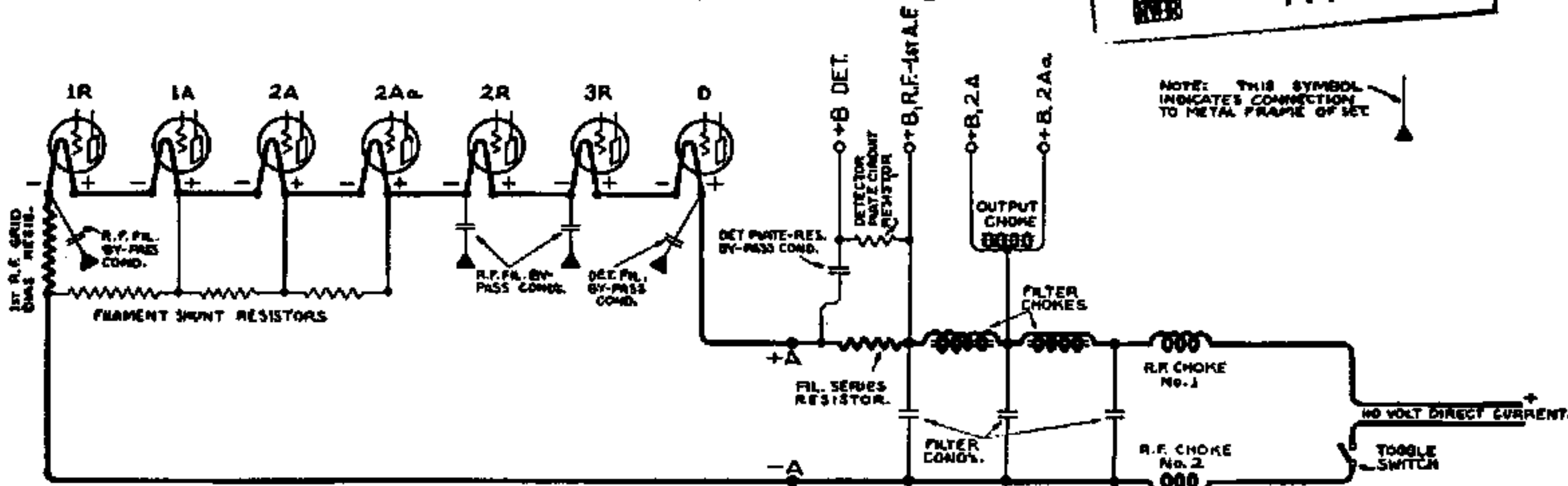
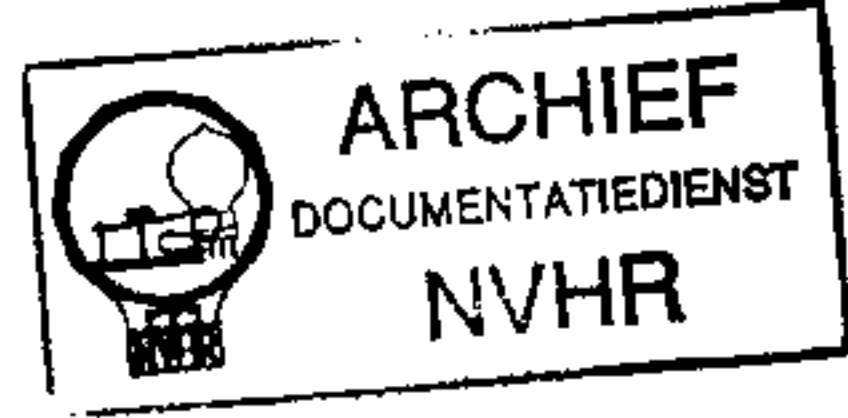


FIG. 103. SIMPLIFIED DIAGRAM OF POWER UNIT AND FILAMENT CIRCUIT IN MODEL 41 RECEIVER. Tubes of the 11B-A type are used in all sockets except 2A and 2Aa, which are the '71-A type.

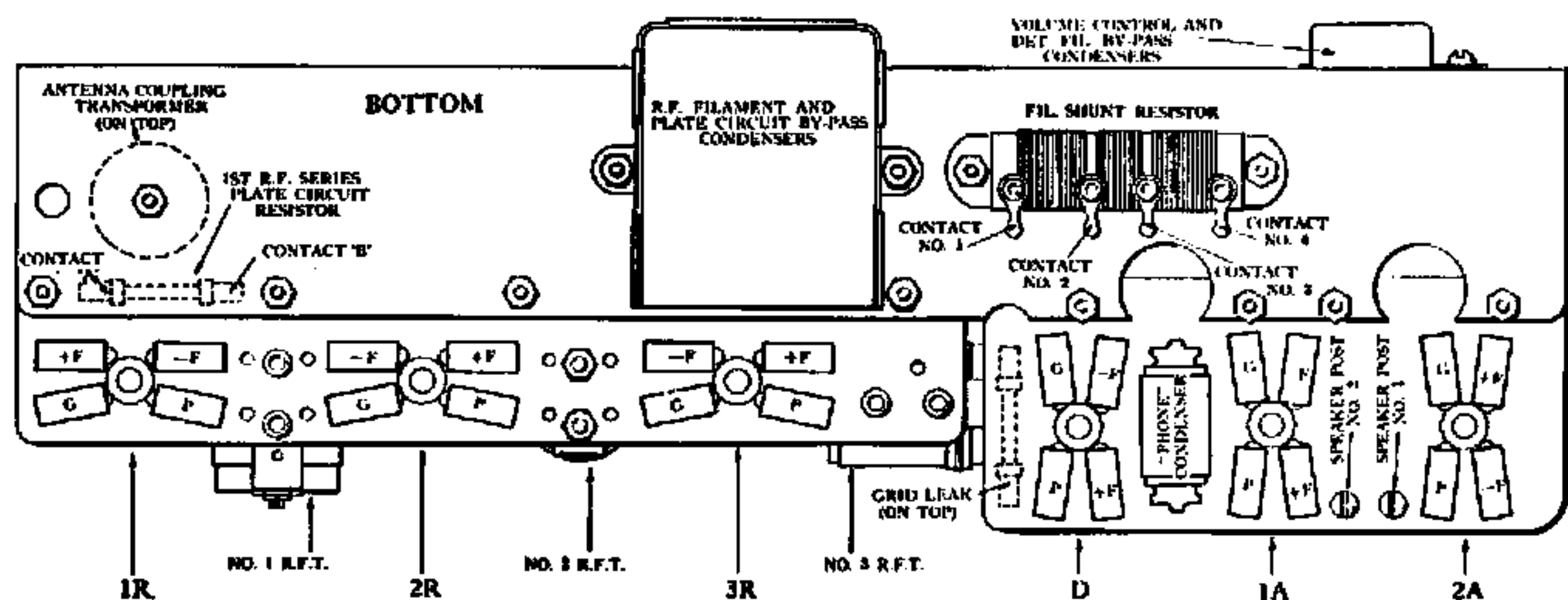


FIG. 104. CHART FOR MODEL 41.

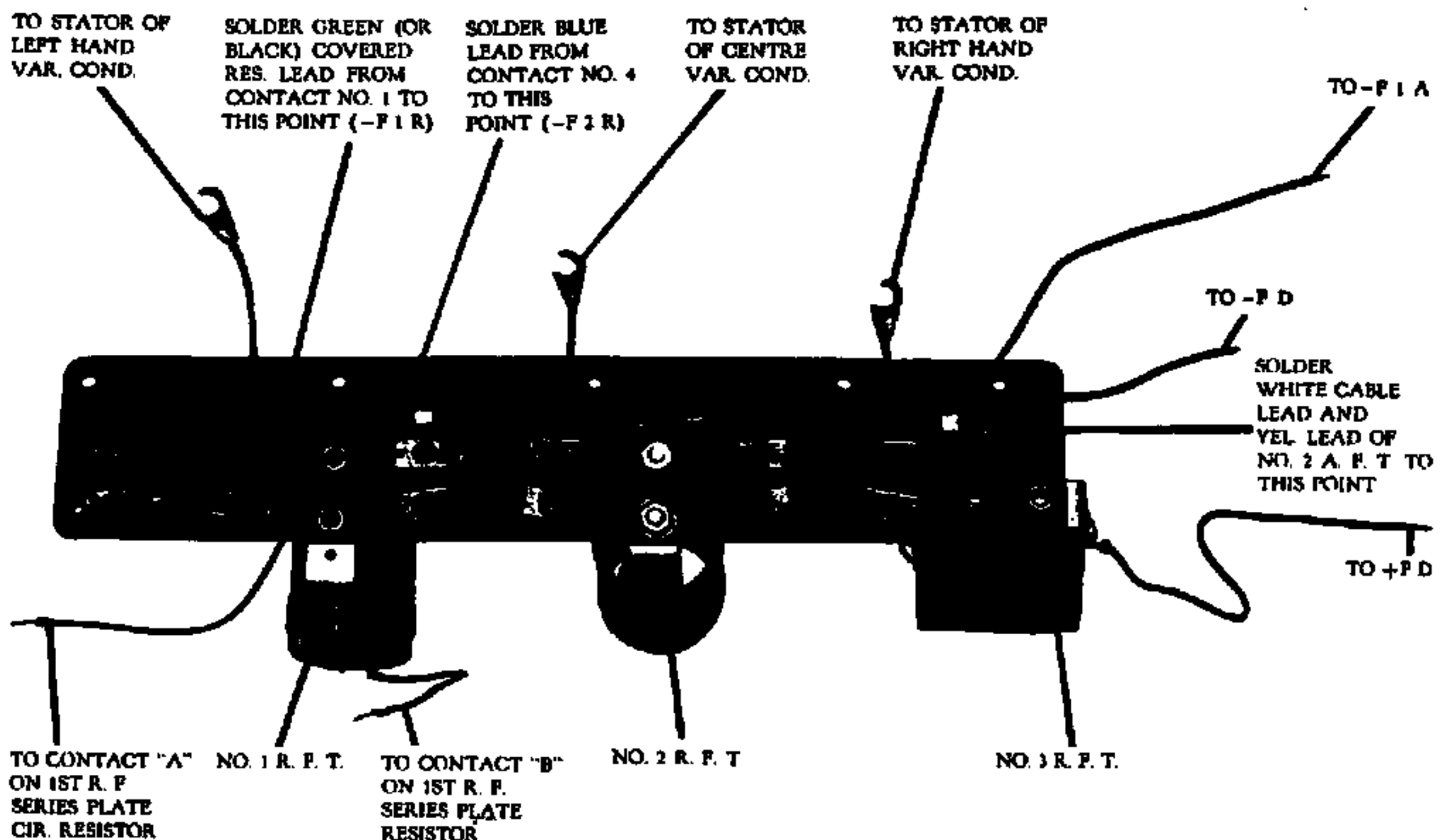


FIG. 105. VIEW OF R.F. AMPLIFIER ASSEMBLY.

ATWATER KENT RADIO

VOLTAGE TABLE FOR MODEL 41

All Measurements Made While Set Is in Operation

Use high-resistance D. C. Voltmeter

	APPROXIMATE VOLTAGE
Voltage at Power Unit Panel Assembly.	
—A to +A.	35 V.
—A to +B, R.F.-1st A.F.	90 V.
—A to +B, Detector.	60 V.
—A to Output No. 1.	95 V.
—A to Output No. 2.	95 V.
Filament Voltage at Set.*	
—F1R to +F1R (1st R.F. Filament).	4.8 V.
—F2R to +F2R (2nd R.F. Filament).	4.9 V.
—F3R to +F3R (3rd R.F. Filament).	4.6 V.
—FD to +FD (Detector Filament).	4.6 V.
—F1A to +F1A (1st A.F. Filament).	4.9 V.
—F2A to +F2A (2nd A.F. Filament).	4.8 V.
Grid Bias at Set.*	
—F1R to G1R (1st R.F. Bias).	2 V.
—F1A to G1A (1st A.F. Bias).	4.8 V.
—F2A to G2A (2nd A.F. Bias).	9.7 V.
Plate Voltage at Set.*	
—F1R to P1R (1st R.F. Plate).	60 V.
—F2R to P2R (2nd R.F. Plate).	65 V.
—F3R to P3R (3rd R.F. Plate).	65 V.
—FD to PD (Detector Plate).	24 V.
—F1A to P1A (1st A.F. Plate).	81 V.
—F2A to P2A (2nd A.F. Plate).	81 V.
Voltage at 2nd A.F. Tube on Power Unit.*	
—F to +F (Filament Voltage).	4.8 V.
—F to G (Grid Bias Voltage).	9.7 V.
—F to P (Plate Voltage).	85 V.

* Contact made through socket eyelets.

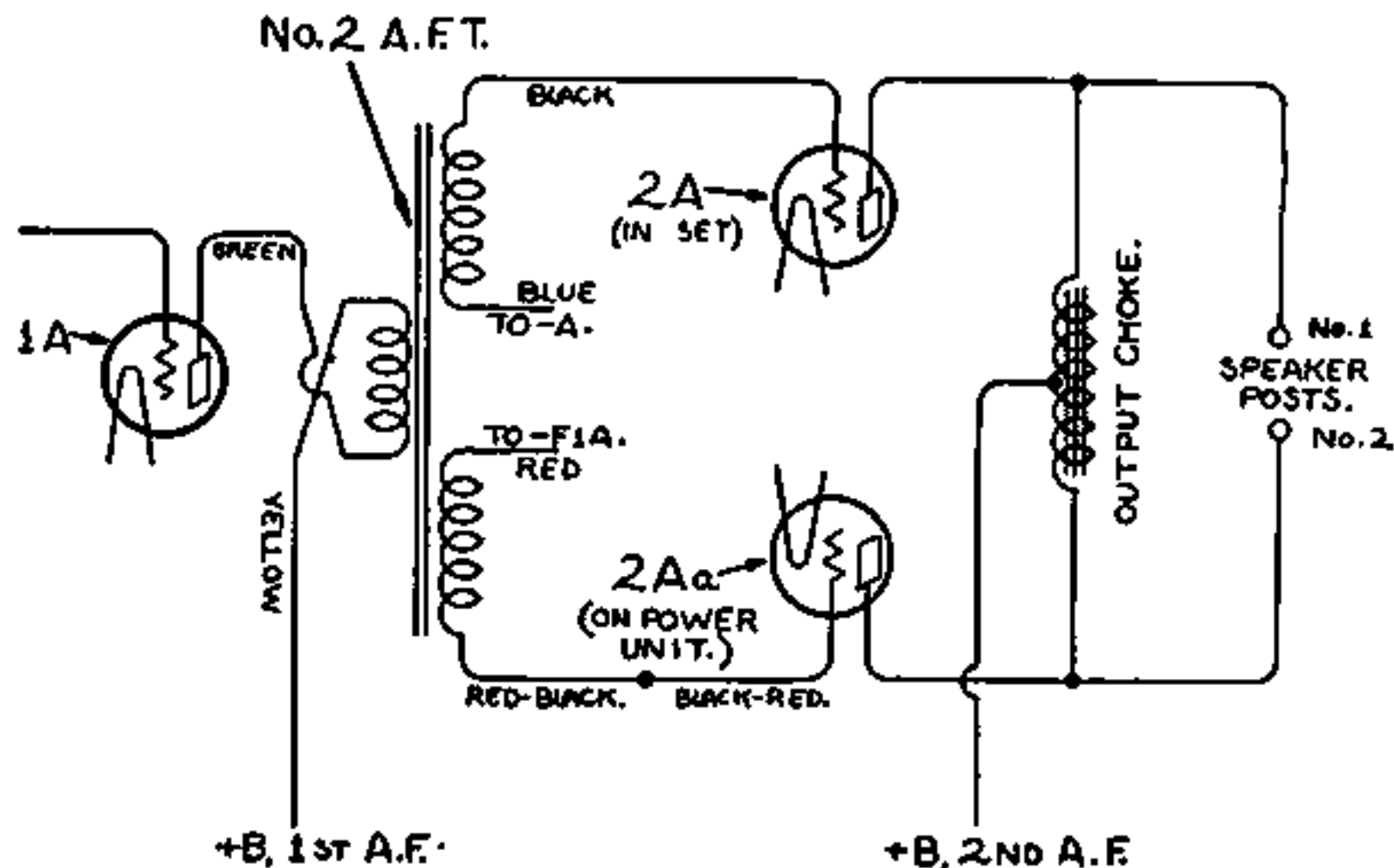


FIG. 160. SCHEMATIC DIAGRAM OF THE "DOUBLE AUDIO" 2ND-A.F. STAGE IN MODEL 41.

MODEL 41 POWER UNIT
(1st and 2nd Type)

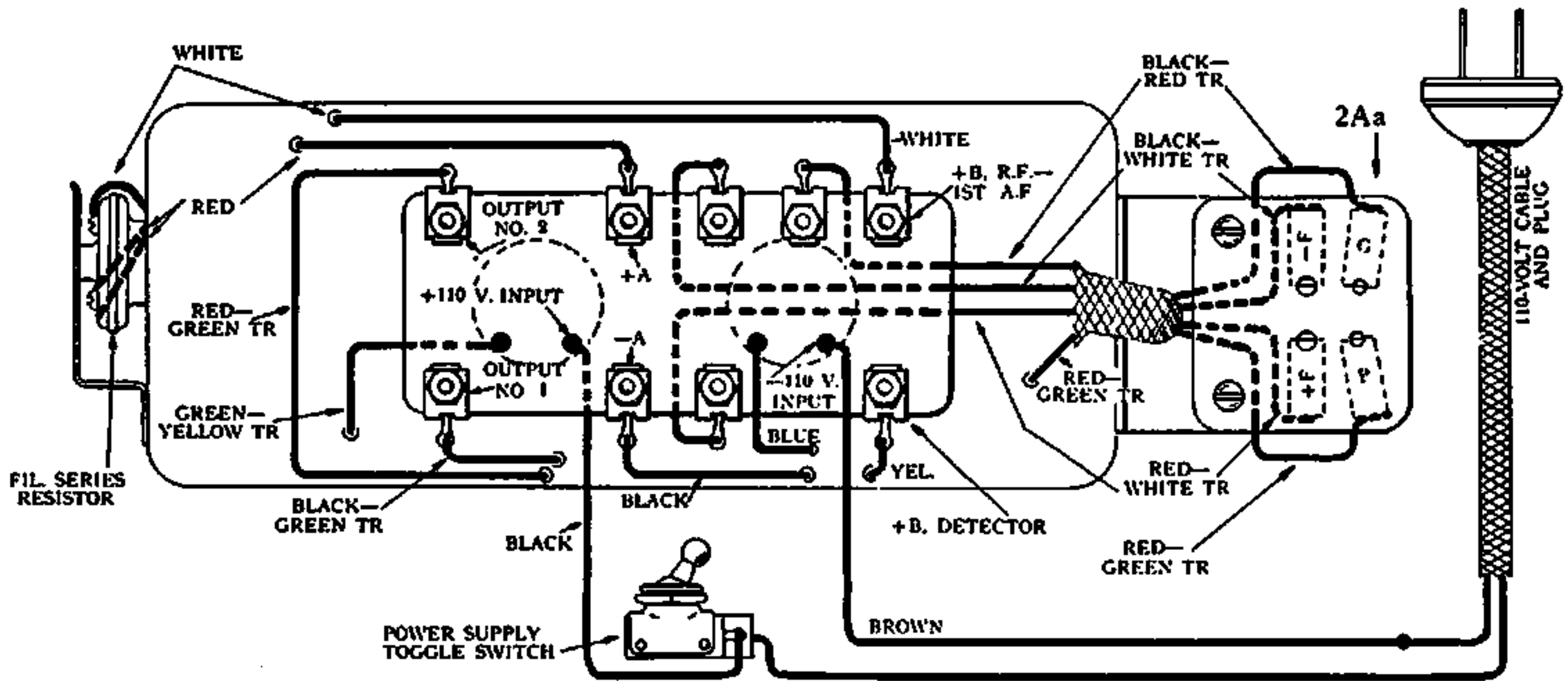


FIG. 108. SHOWING CONNECTIONS AND APPROXIMATE POSITION OF LEADS FROM SEALED CONTAINER IN 1ST TYPE OF POWER UNIT.

Complete direct current power units of the 1st, 2nd and 3rd type are interchangeable in Model 41 receiver. Only the 3rd type is supplied as replacement.

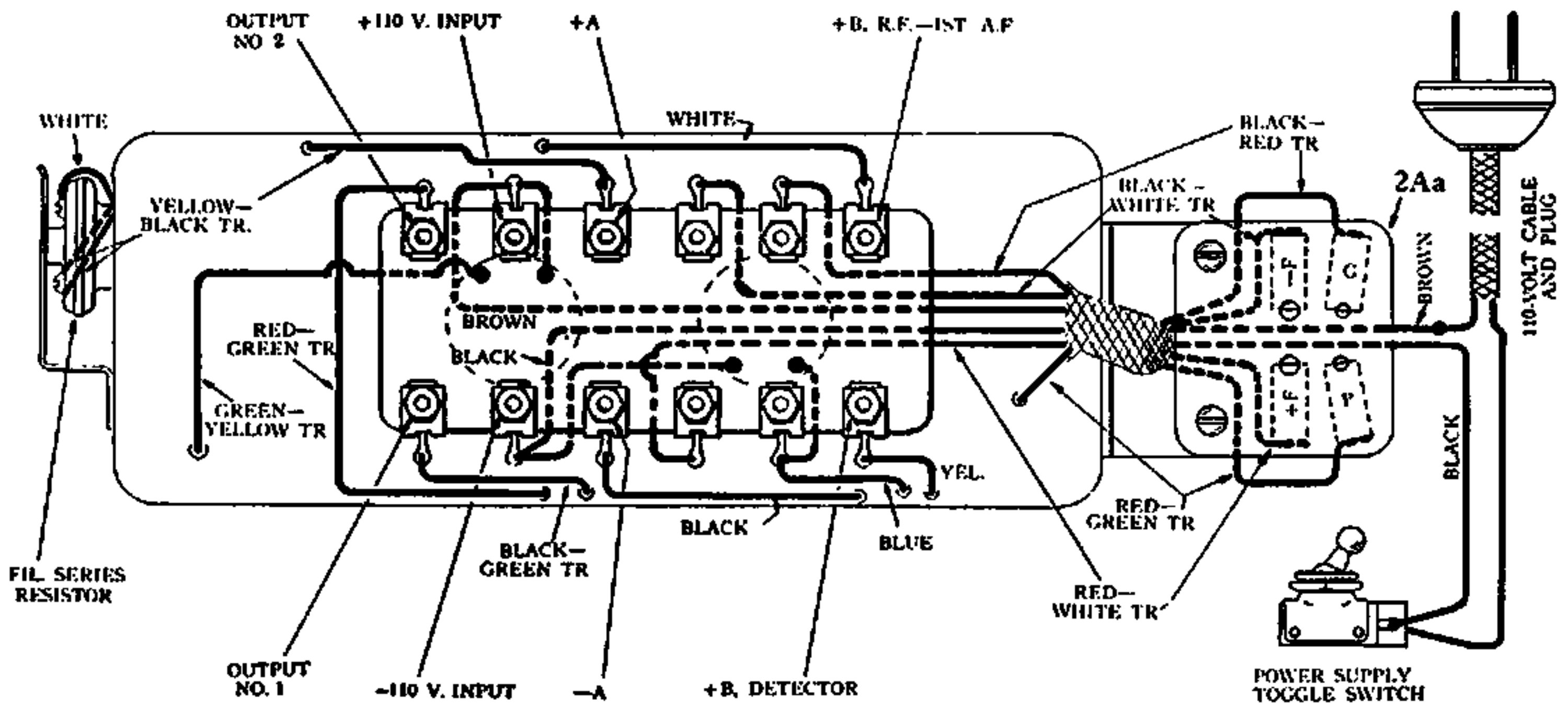


FIG. 109. SHOWING CONNECTIONS AND APPROXIMATE POSITION OF LEADS FROM SEALED CONTAINER IN 2ND TYPE OF POWER UNIT.

ATWATER KENT RADIO

MODEL 41 POWER UNIT (3rd Type)

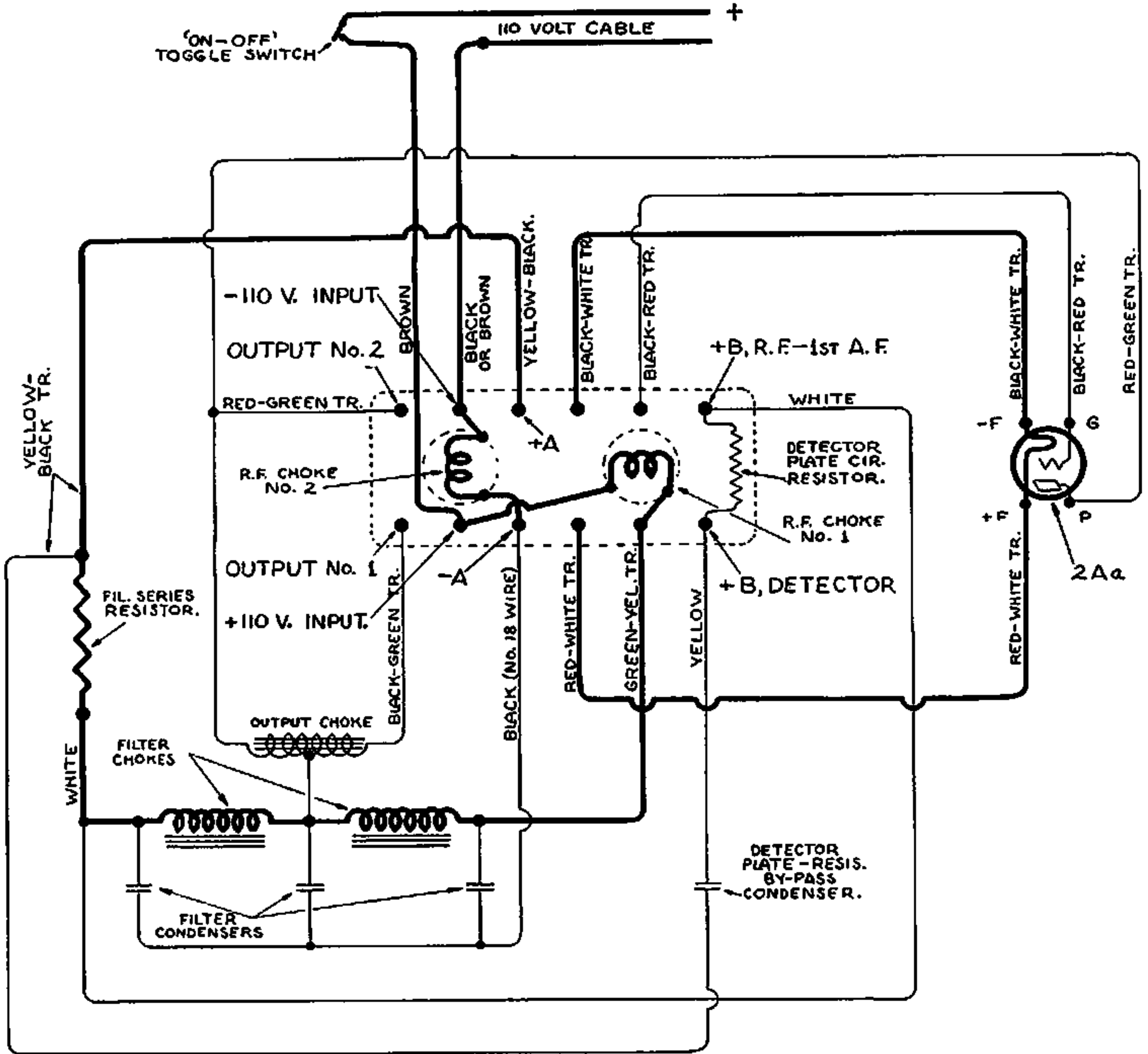


FIG. 106. WIRING DIAGRAM OF 3RD TYPE OF POWER UNIT FOR MODEL 41.

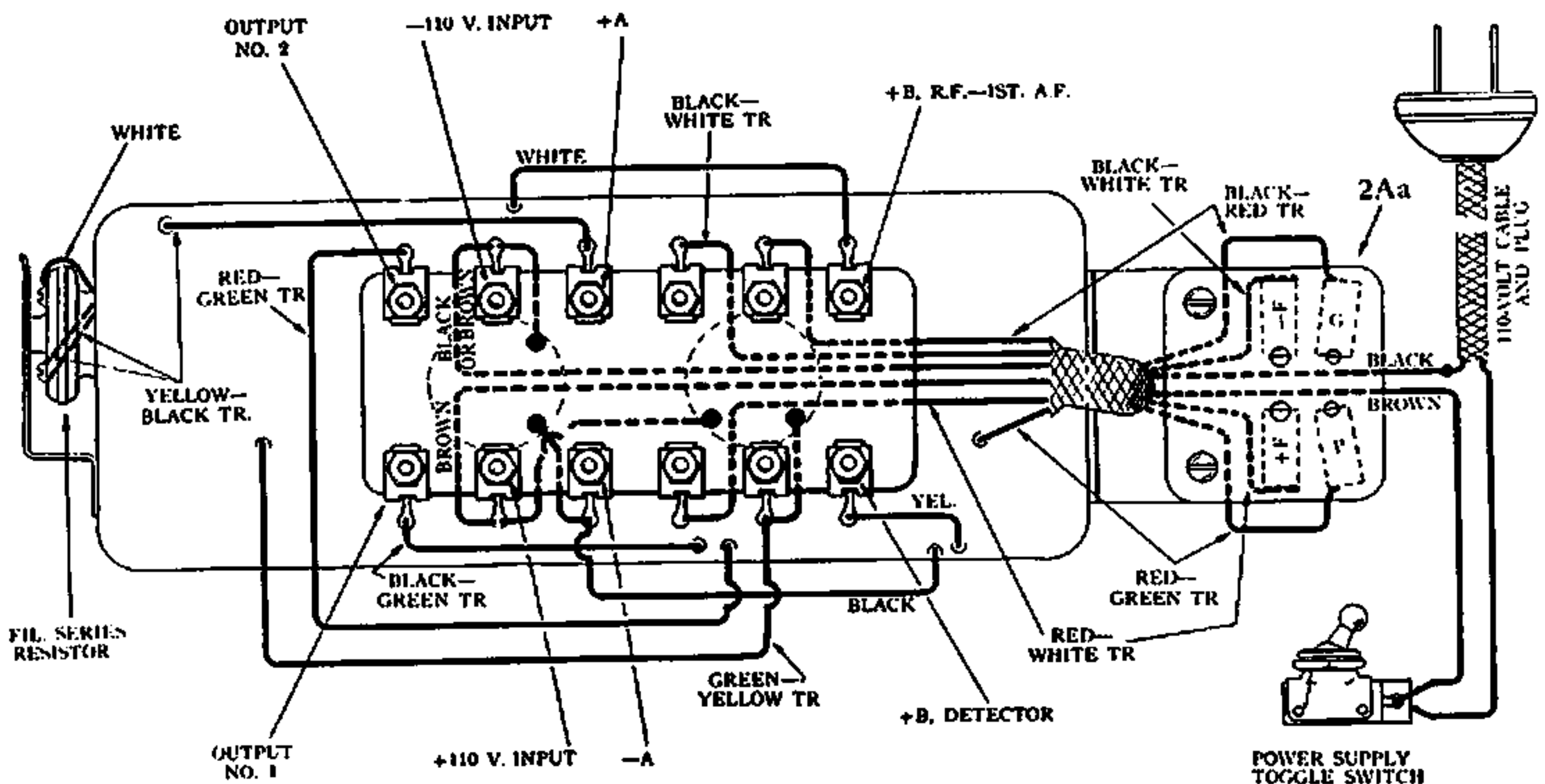


FIG. 107. SHOWING CONNECTIONS AND APPROXIMATE POSITION OF LEADS FROM SEALED CONTAINER IN 3RD TYPE OF POWER UNIT.