

EKCO



SERVICE DEPT., E. K. COLE LTD., ESSEX, ENGLAND.

Cables: Ekco, Southend-on-Sea.

NOT TO BE COPIED.

The Service Manual of the A.C. version, Model EX401, is generally descriptive of this A.C./D.C. type and should be used in conjunction with the circuit diagram overleaf. The main features of the sets are the same, although small differences may be noticed in comparing the EXU401 chassis with the drawings of the A.C. model.

Voltage Range: 200/250 A.C./D.C.

Valves: All heaters are in series; output valve V4 is CL6; rectifier valve V5 is CY1. Other valves as EX401.

Calibration: The trimmer numbers in the diagram over-

leaf differ from those in EX401 manual. The calibration procedure is exactly the same but

- | | |
|-----------------------|---------------------|
| (2) For C10 read C31T | (7) For C3 read C32 |
| (3) " C8 " C30T | (8) " C21 " CX2 |
| (4) " C22 " CX2 | (9) " C2 " CX3 |
| (5) " C3 " C32 | (10) " C12 " CX3 |
| (6) " C6 " C29T | |
| " C13 " CX3 | |

WARNING. As one side of a universal chassis can be at mains potential, do not allow any earthed lead or object to touch the chassis, or part thereof, except at the earth socket.

PRICE LIST

MISCELLANEOUS.

Description.	Part No.	Price	Description.	Part No.	Price
Back Cover	DP2647		Knob—Wave change	DP2400	
Baffle	E10205/1		Loudspeaker	D8761/2	
Cabinet	DP2397		Mains Filter	SA73	
Coil Assembly—Bandpass L1, 2, 3, 4, 5, 6, 7, C3	SA356		Mains Lead	DP759	
Coil Assembly—Oscillator (Bands 2 and 3)	SA357		Pilot Lamp	P2445	
Coil Assembly—Oscillator (Band 1)	DP2440		Pilot Lamp Holder	A10654	
Coil Assembly—1st I.F.	SA301/2		Pointer	A10186/1	
Coil Assembly—2nd I.F.	DP2417		Scale	D10356	
Choke L.F.	SA379		Tone Control	C10219	
Knob—Tuning	DP2409		Transformer Output	SA374/2	
Knob—T/C.	DP2399		Valve Holder 'E' type 8	A4126	
Knob—V/C.	DP2091		Volume Control	C10220	
			Wavechange Switch	C10209	
			Window	C10152	

CONDENSERS.

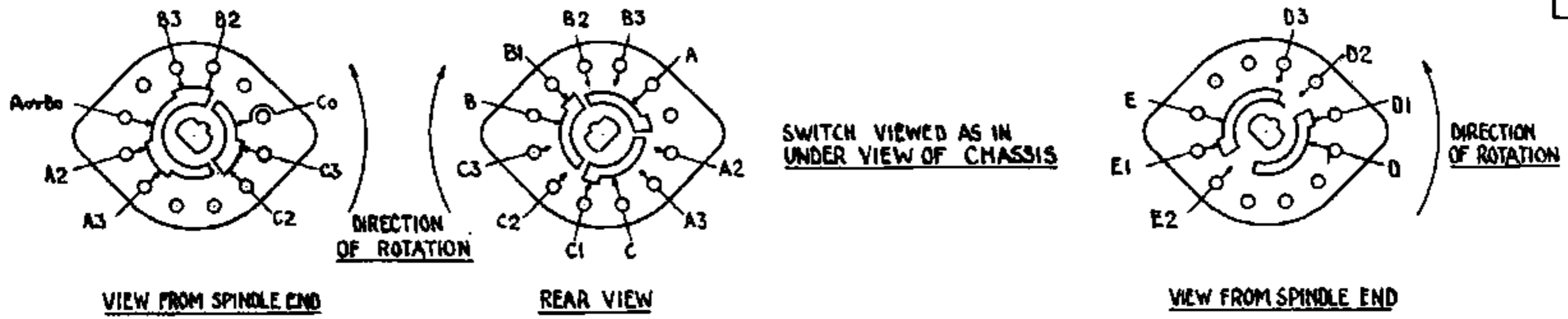
Description.	Part No.	Price	Description.	Part No.	Price
C10005 mfd....	A6516		C8 ... 2000 mmfd. ...	B8412	
C21 mfd. ...	B10383		C91 mfd. ...	B10383	
C31 mfd. ...	B10383		C101 mfd. ...	B10383	
C41 mfd. ...	B10383		C11 ... 15 cms. ...	A5925	
C5000025 mfd. ...	A5747		C1201 mfd. ...	B10384	
C61 mfd. ...	B10383		C13, C14, C15 4+10+8 mfd. ...	C11530	
C701 mfd. ...	B10384		C16, C17 25+25 mfd. ...	C10360	

CONDENSERS—(Continued)

Description.	Part No.	Price	Description.	Part No.	Price
C180025 mfd....	B10389		C29, C30, C31, Gang Condenser		
C19 ... 140 mmfd....	B8735		C29T, C30T, (and drive)	C10171	
C20 ... 140 mmfd....	B8735		C31T		
C2104 mfd. ...	B10386		C331 mfd. ...	B10897	
C220002 mfd....	B8905		C341 mfd. ...	B10897	
C230002 mfd....	B8905		C351 mfd. ...	B10897	
C241 mfd. ...	B10383		C36 ... 4 mfd. ...	B11075	
C250003 mfd....	A6516		C37002 mfd. ...	A8992	
C26002 mfd. ...	A6516		X2 ... Double Trimmer		
C271 mfd. ...	B10383		Assembly	B10608	
C2801 mfd. ...	B10384		X3 ... Triple Trimmer		
			Assembly	B10214	

RESISTANCES.

Description.	Part No.	Retail	Description.	Part No.	Retail
R1 ... 62,000 ohms ...	9/202		R14 ... 1,000 ohms ...	8/62	
R2 ... 100,000 ohms ...	9/86		R15 ... 56,000 ohms ...	8/83	
R3 ... 220 ohms ...	8/54		R16 ... 3,300 ohms ...	8/68	
R4 ... 200 ohms ...	9/142		R17 ... 180 ohms ...	8/141	
R5 ... 33,000 ohms ...	8/80		R18 ... 1 megohm ...	9/31	
R6 ... 220,000 ohms ...	9/90		R19 ... 220,000 ohms ...	9/90	
R7 ... 1 megohm ...	9/31		R21 ... Mains Resistance .	DP2649	
R8 ... 270 ohms ...	8/53		R22 ... 470,000 ohms ...	9/94	
R9 ... 560,000 ohms ...	9/95		R23 ... 33,000 ohms ...	8/80	
R10 ... 560,000 ohms ...	9/95		R24 ... 68,000 ohms ...	9/84	
R11 ... 100,000 ohms ...	9/86		R25 ... 100,000 ohms ...	9/86	
R12 ... 100,000 ohms ...	9/86		R26 ... 47 ohms ...	8/46	



EXU 401

