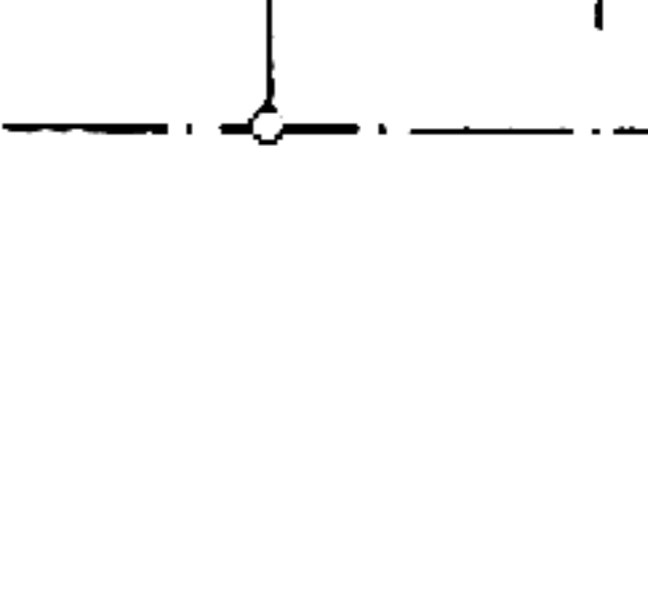
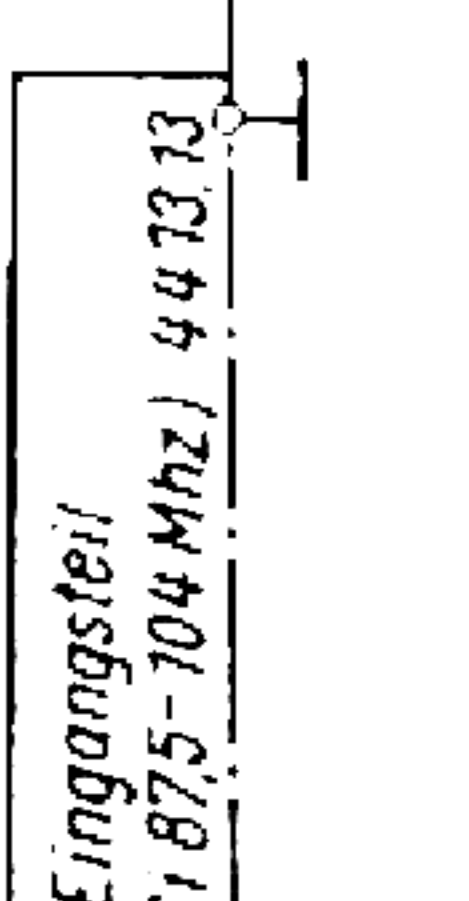
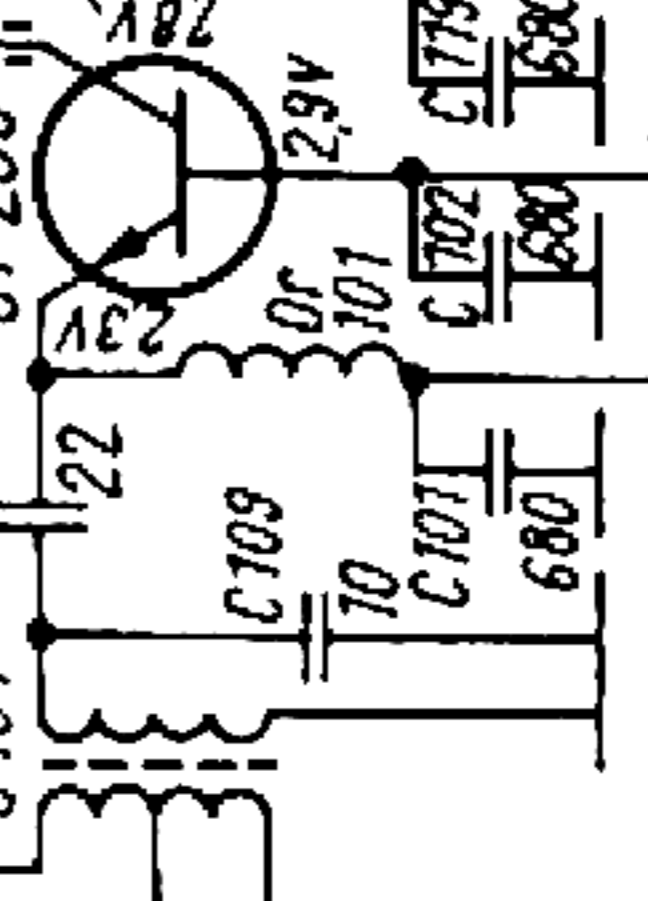
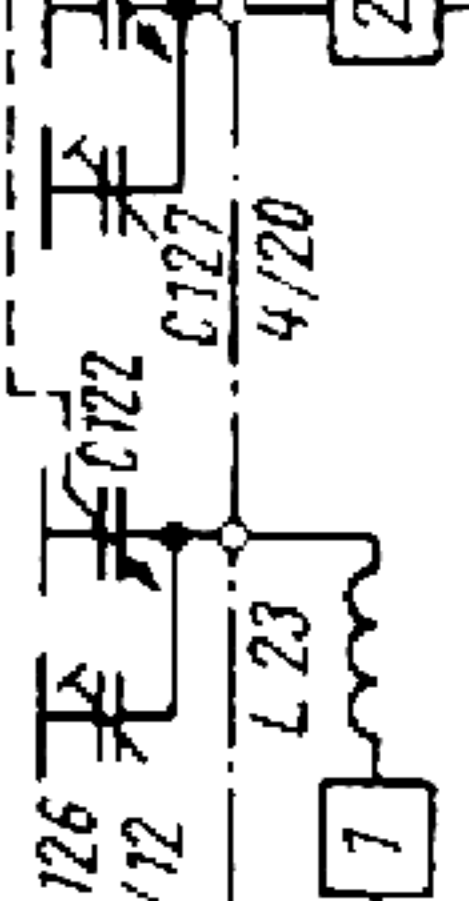
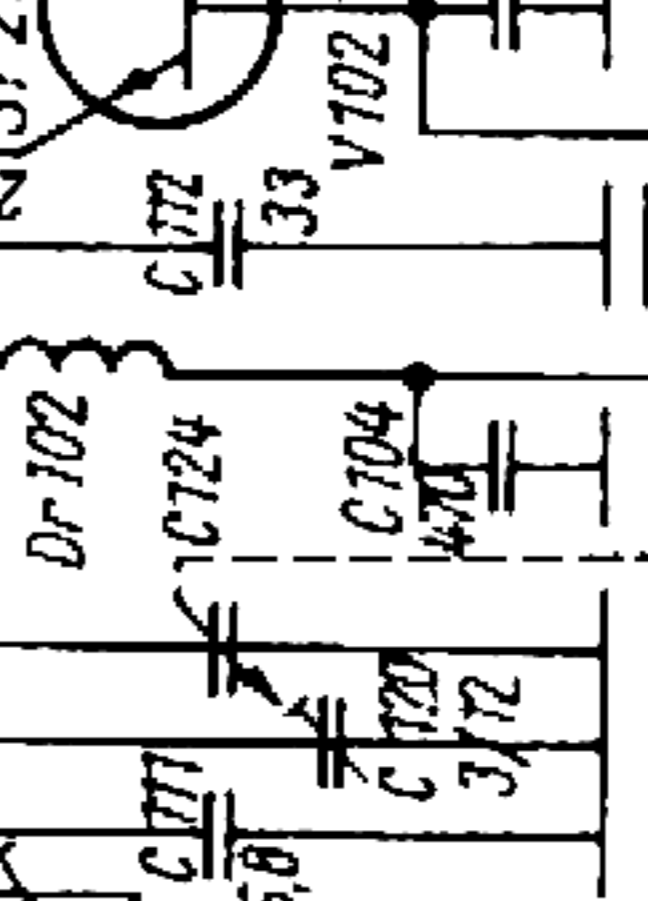
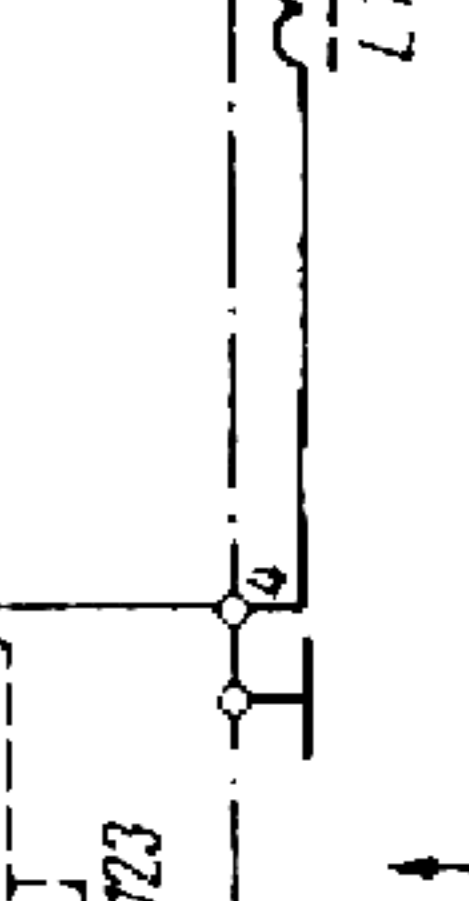
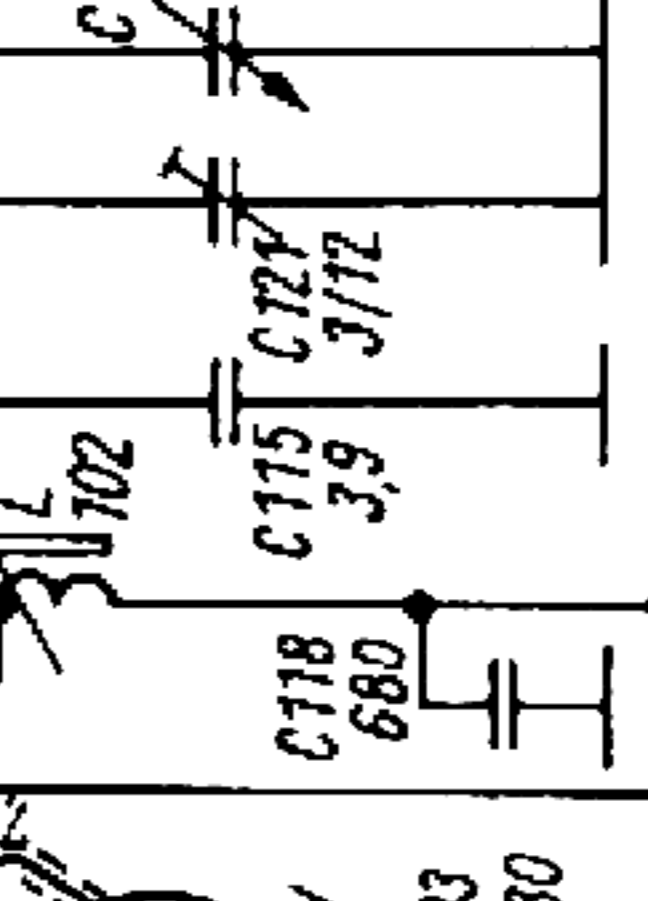
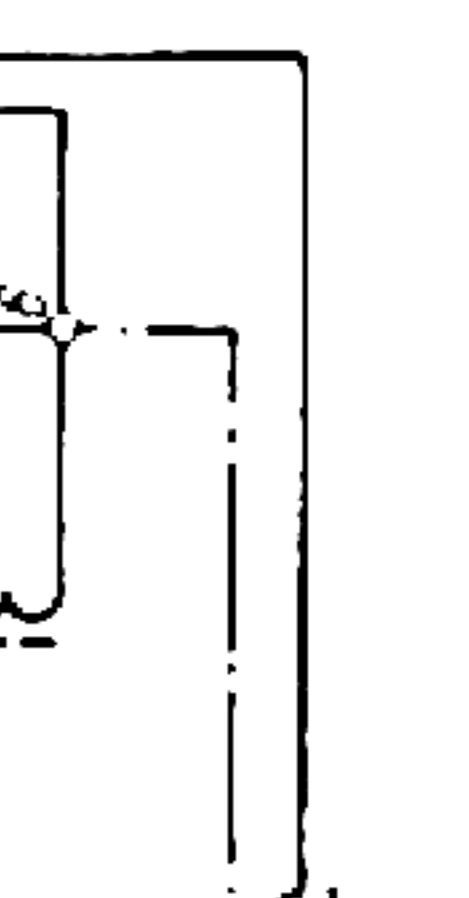
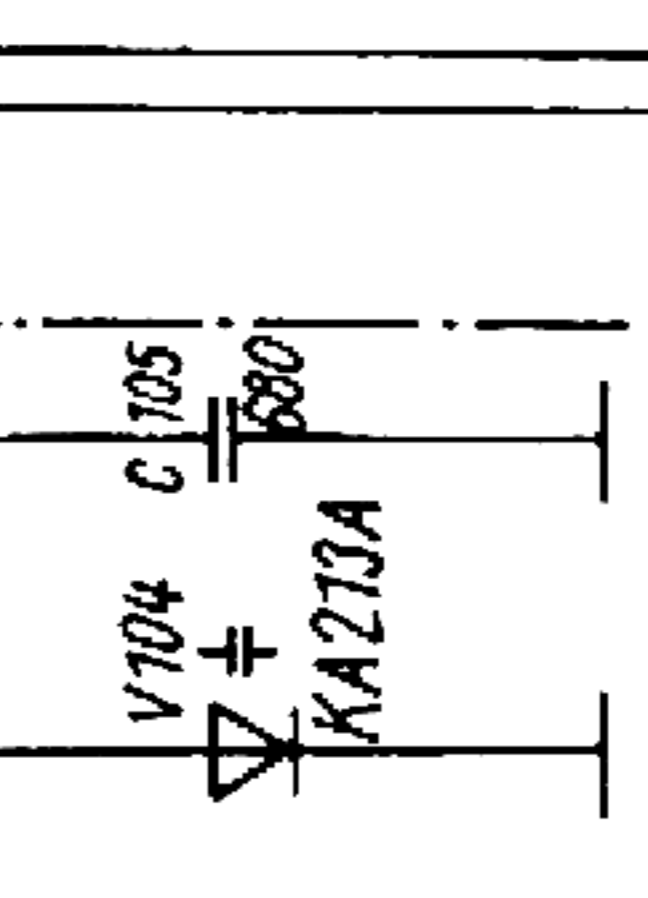
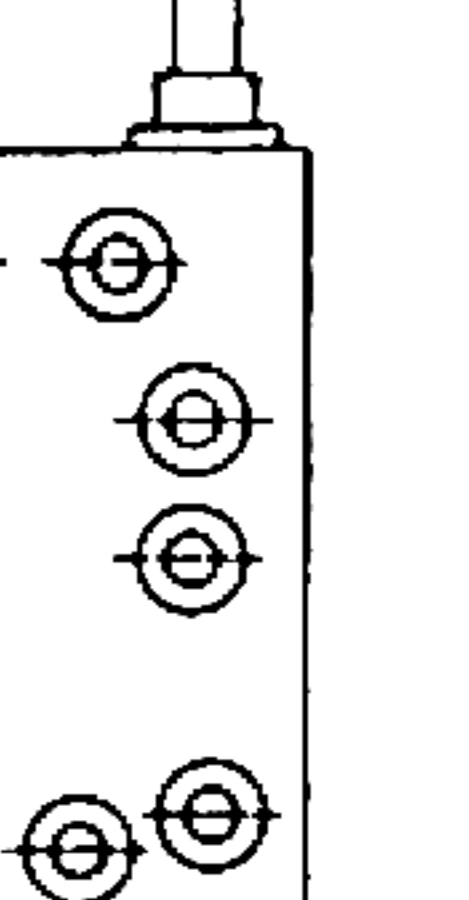
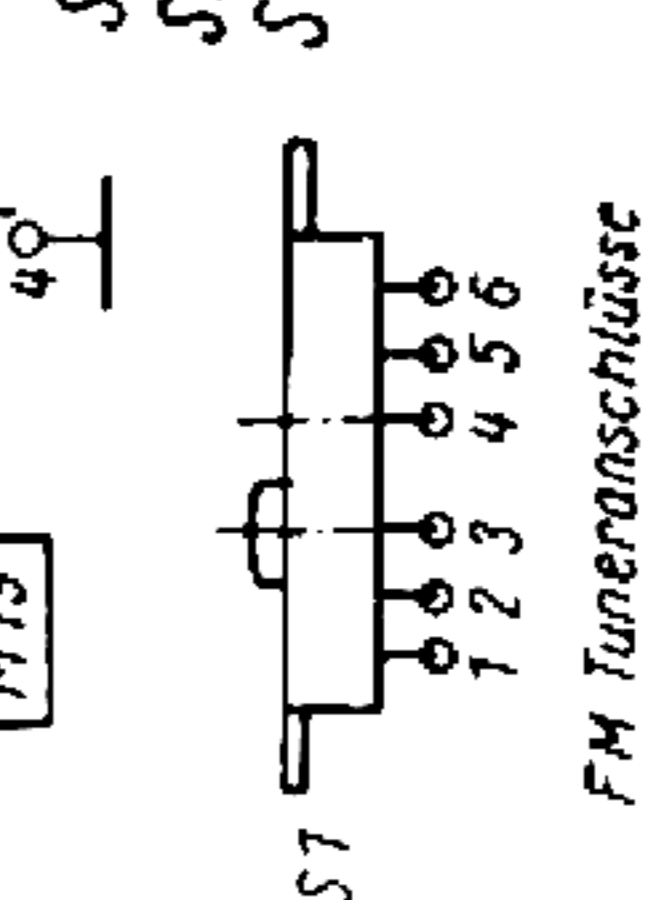
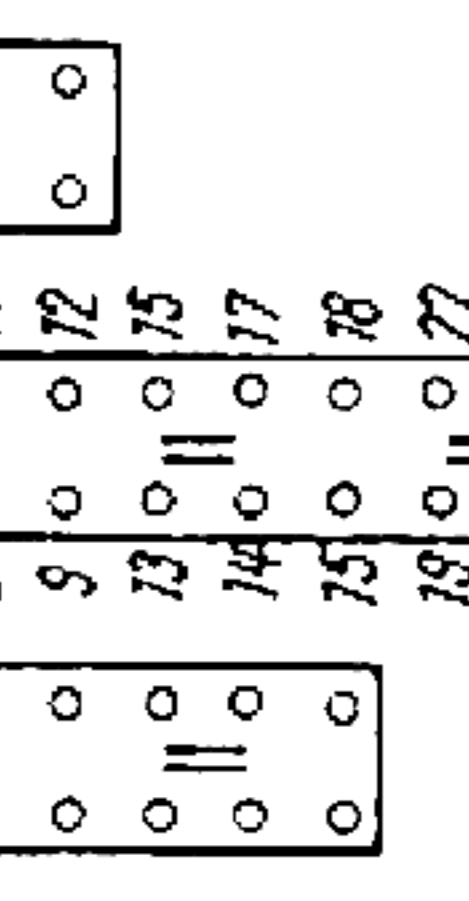
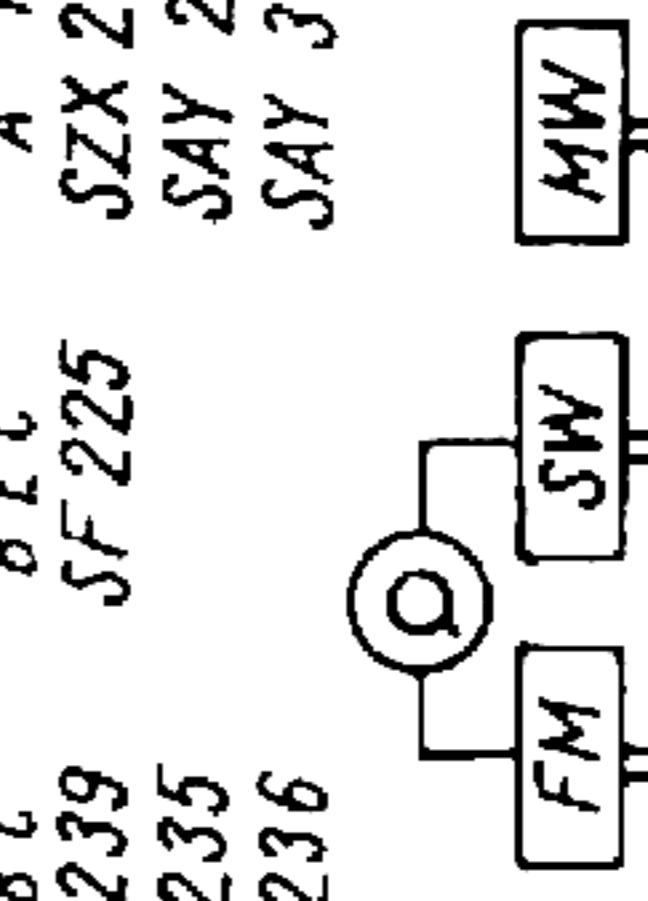
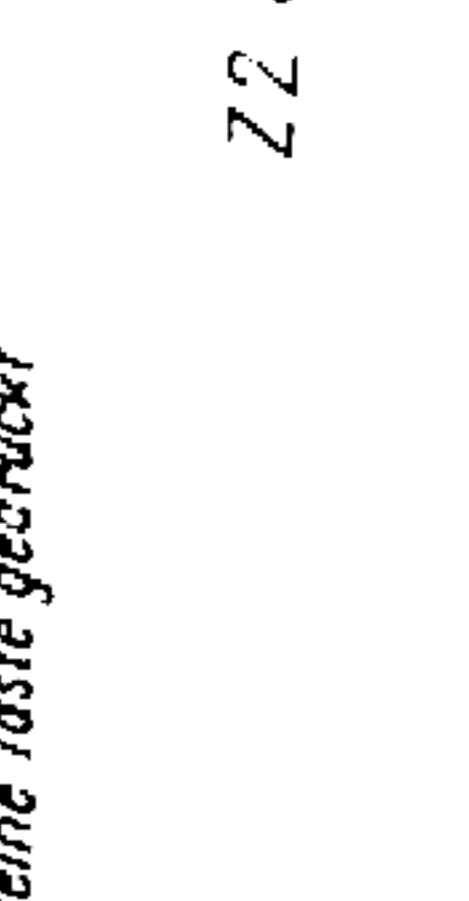
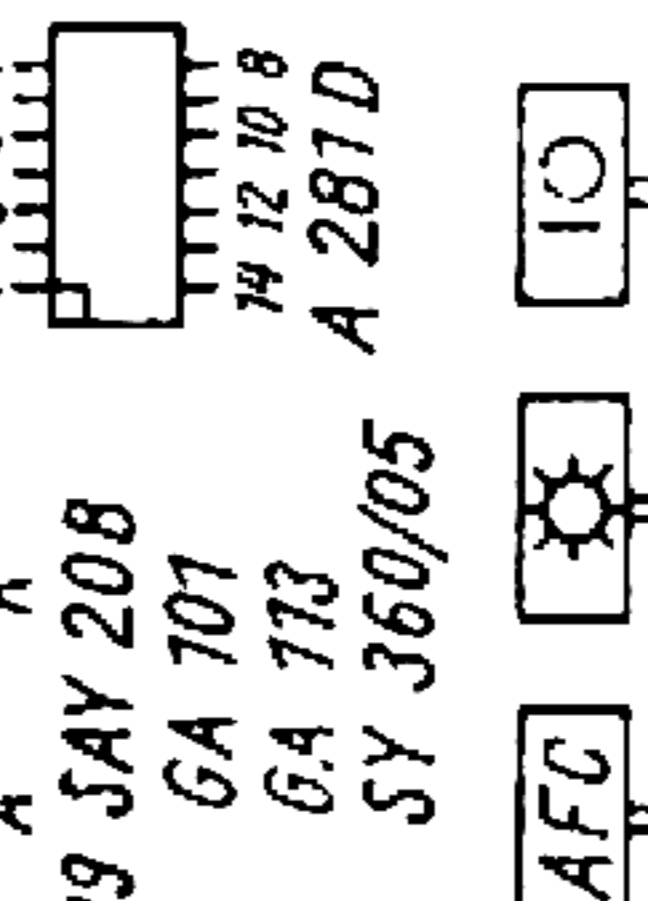
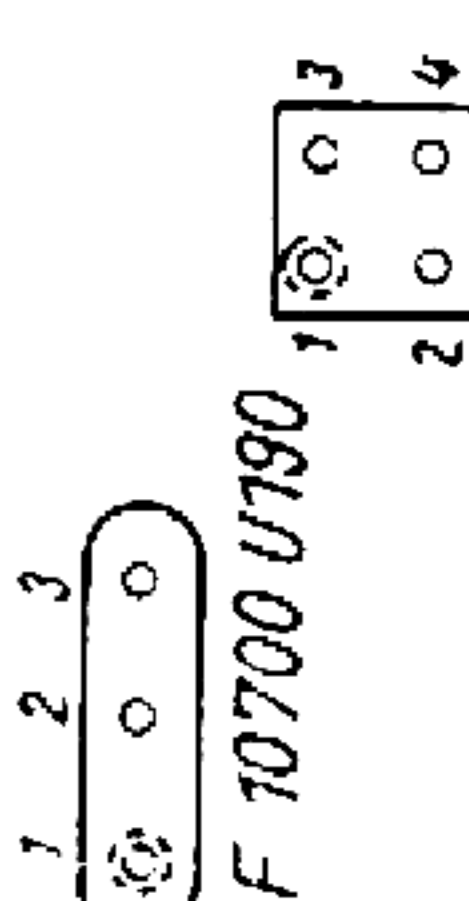
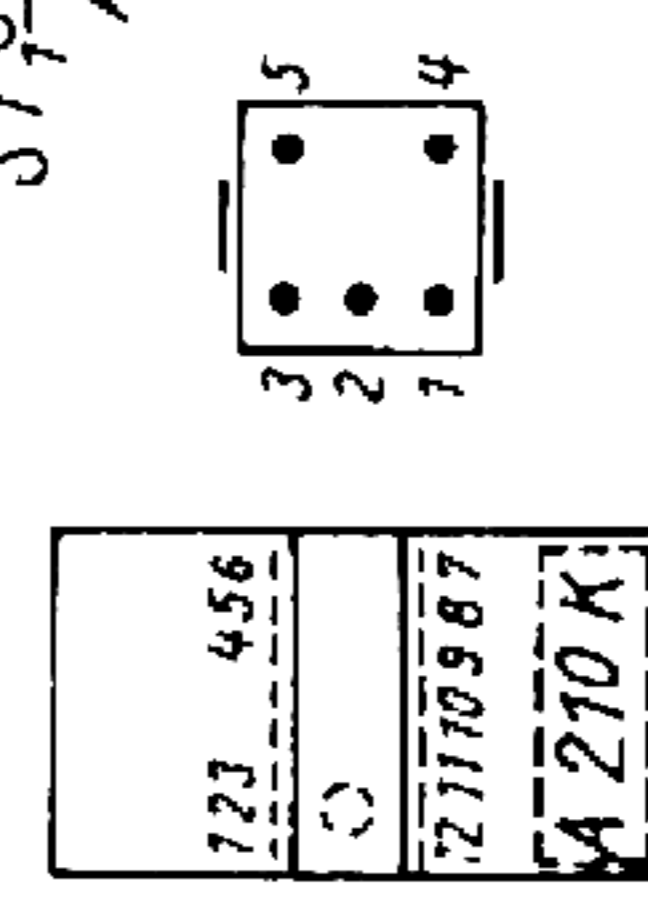


- (Z1) 0474.00 - 56.00 Bv (902)
- (Z5) 0474.00 - 55.00 Bv (901)
- (Z6) 0474.00 - 53.00 Bv (905)
- (Z7) 0474.00 - 54.00 Bv (906)

- MW 0102.00 - 43.00 Bv (L6/L7/L8)
- SW 0403.30 - 57.00 Bv (L9/L10/L11)
- SW 0403.30 - 58.00 Bv (L20)
- SW 0403.30 - 56.00 Bv (L4/L5)



FM-Eingangsteil
Typ 3S1 87,5-704 Mhz) 4413.13

Widerstandsnetzwerk
R103 75k
R104 2,7k
R105 70k
R106 1,5k

FM Tunerschlüsse
1 2 3 4 5 6
7 8 9 10 11 12 13 14 15 16 17 18 19 20 21 22 23 24

gezeichnete Schalterstellung
keine Taste gedrückt

Auf die Anschlüsse gesehen
A K A K
SAY 20 GA 101
SAY 30 GA 113
SY 360/05

SF 225
SC 239
SF 235
SC 236

FM SW
MW
AFC

Spannungen mit Instrument Ri ≥ 20 kOhm
gegen Masse gemessen (Batteriebetrieb)