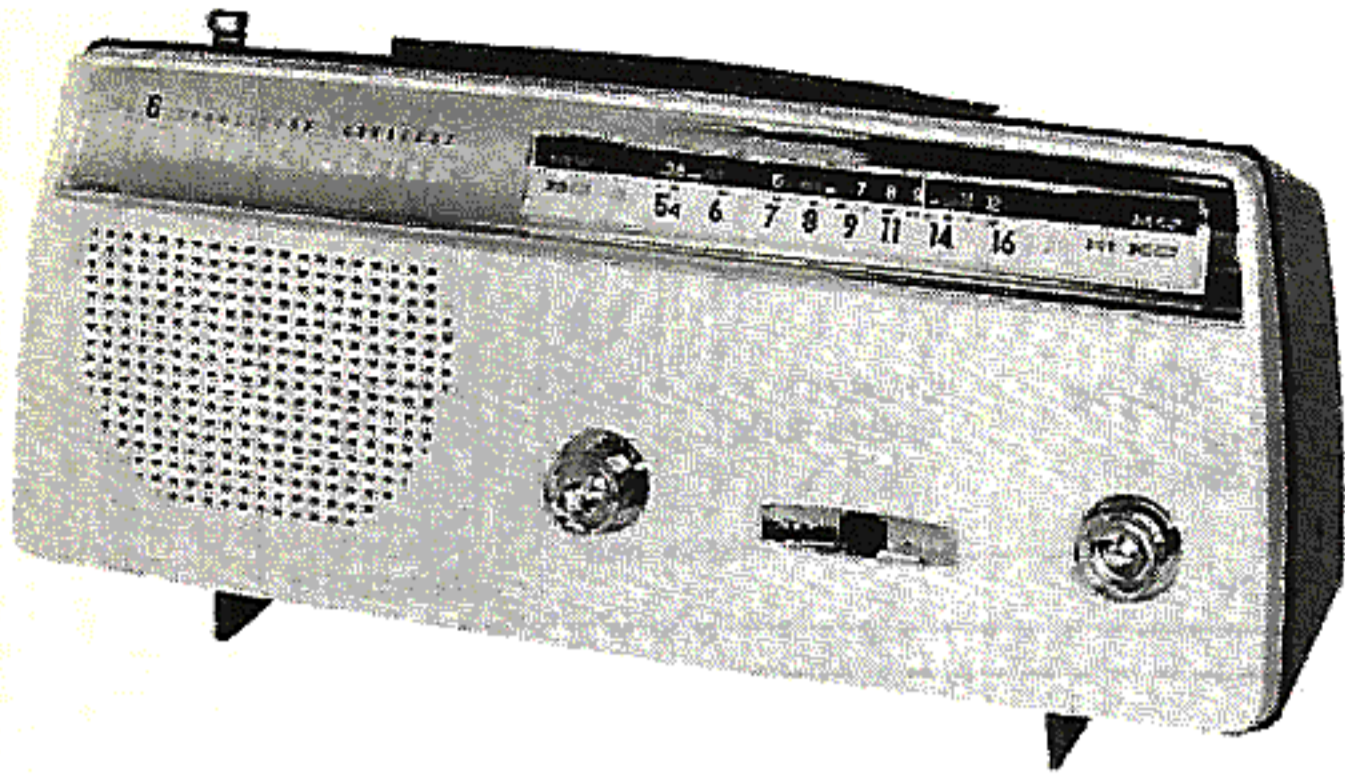


PHOTOFACT[®] with

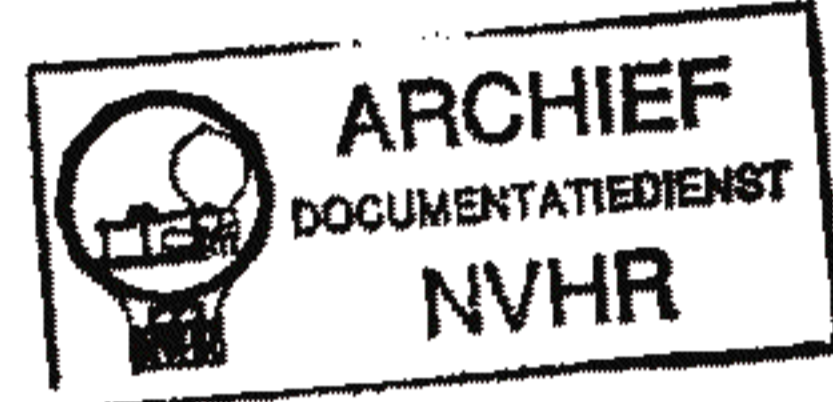
CIRCUITRACE[®]



Met dank aan Jef Bos

TRADE NAME : Channel Master Model 6507
 SUPPLIER : Channel Master Corp., Ellenville, N. Y.
 TYPE SET : 6 Transistor AM-SW Receiver
 POWER SUPPLY : 6 Volts DC
 RATING : 6ma @ 6V (No Signal)
 18 ma @ 6V (Normal Signal)
 TUNING RANGE: AM 540-1620KC
 SW 3.8-12MC

Ned. Ver. v. Historie v/



ALIGNMENT INSTRUCTIONS

Check for specified source voltage.

Fashion loop of several turns of wire and connect generator across loop.

Adjust output of generator to radiate only enough signal into receiver to obtain a suitable indication.

Suggested Alignment Tools: A1, A2, A3, A5, A8

GENERAL CEMENT #5067, 8282, 8606

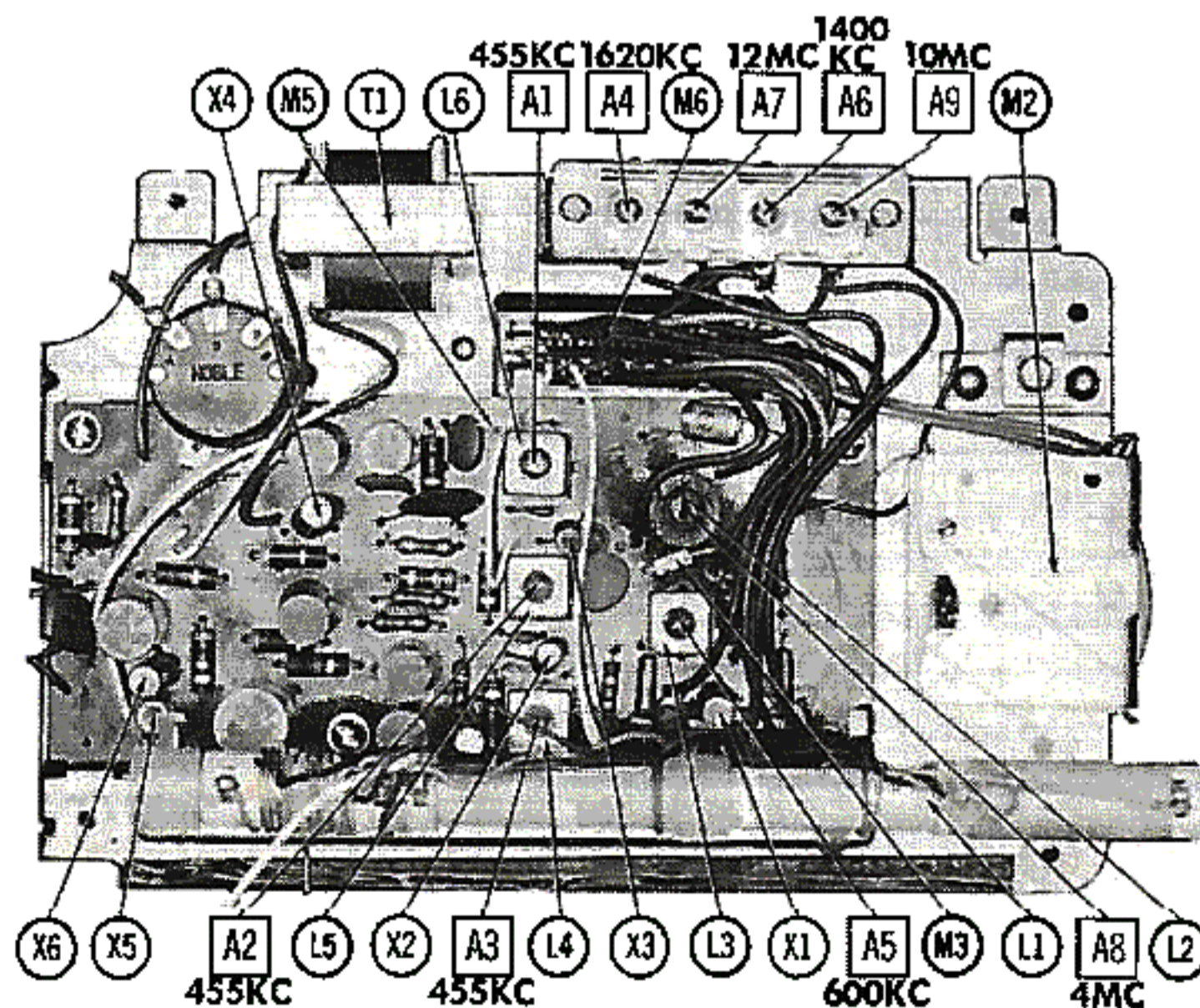
WALSCO #2526, 2543

A4, A6, A7, A9

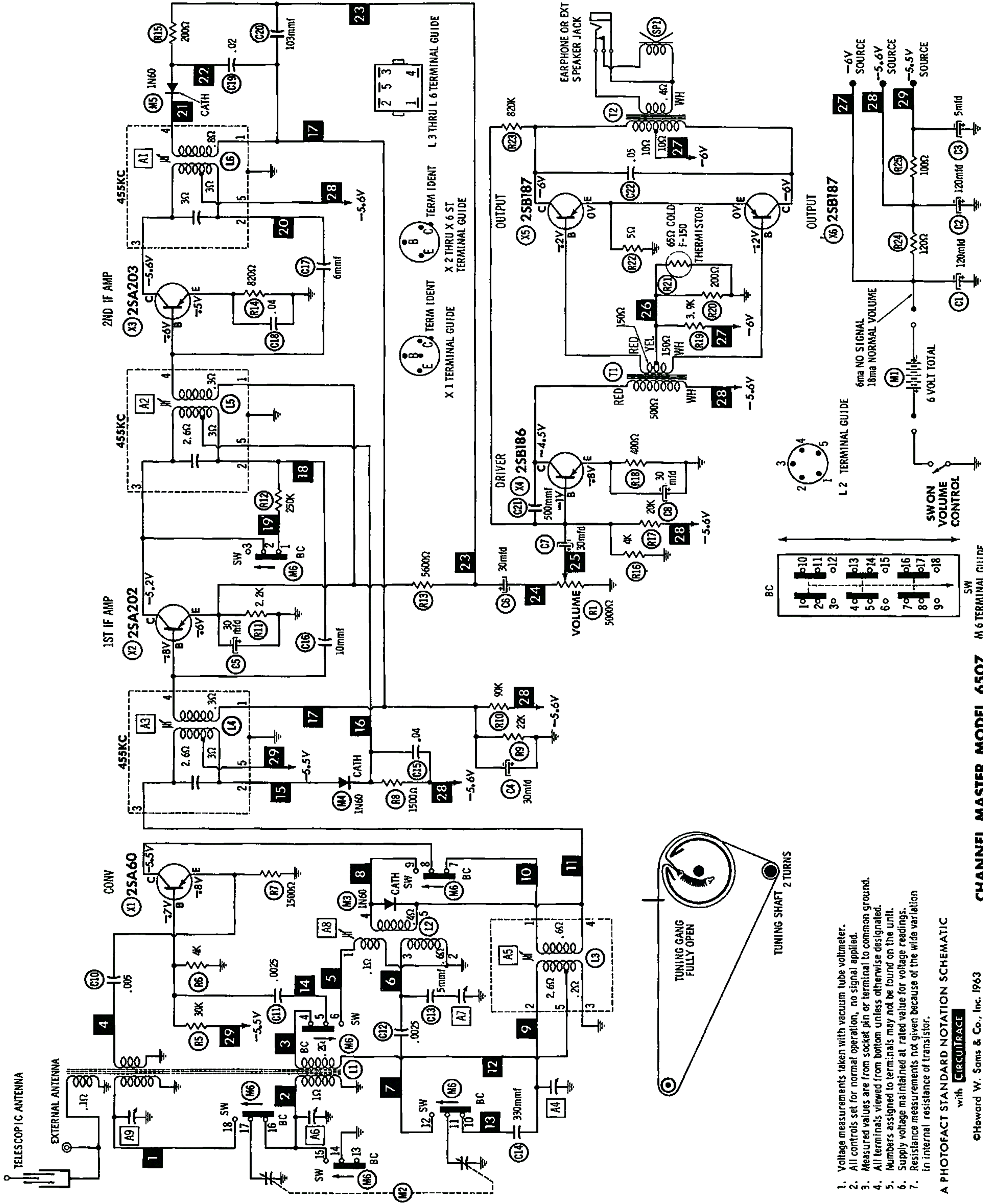
GENERAL CEMENT #5000, 5066, 8290

WALSCO #2512, 2525, 2528

SIGNAL GENERATOR FREQUENCY	RADIO DIAL SETTING	INDICATOR	ADJUST	REMARKS
1. 455KC (400% Mod.)	Tuning gang fully open.	Output Meter across voice coil.	A1, A2, A3	Adjust for maximum. Repeat as required.
2. 1620KC	"	"	A4	Adjust for maximum.
3. 600KC	Tune to Signal.	"	A5	Rock tuning gang and adjust for maximum. Repeat steps 2 and 3.
4. 1400KC	"	"	A6	Adjust for maximum.
12MC (400% Mod.)	Tuning gang fully open.	Output Meter across voice coil.	A7	Adjust for maximum. Repeat as required.
4MC	Tune to Signal.	"	A8	Rock tuning gang and adjust for maximum. Repeat steps 2 and 3.
10MC	"	"	A9	Adjust for maximum.

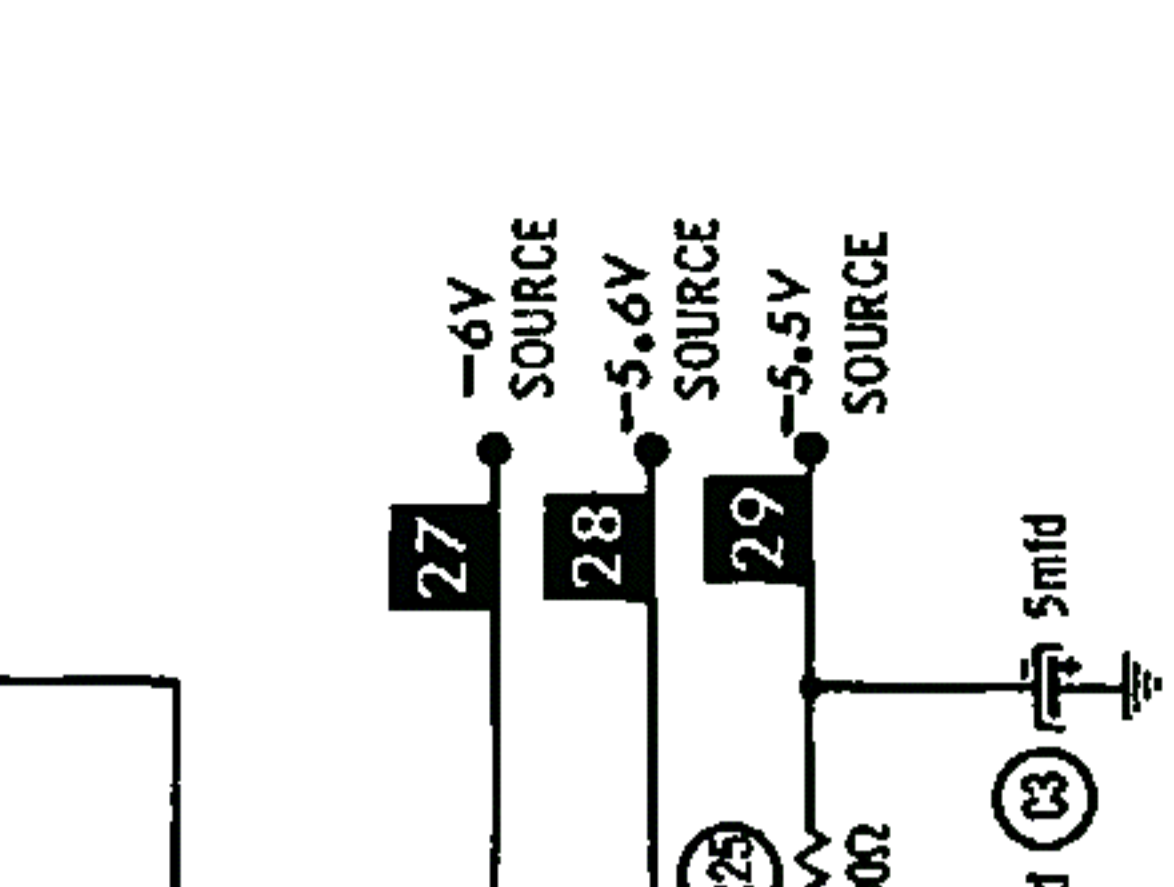
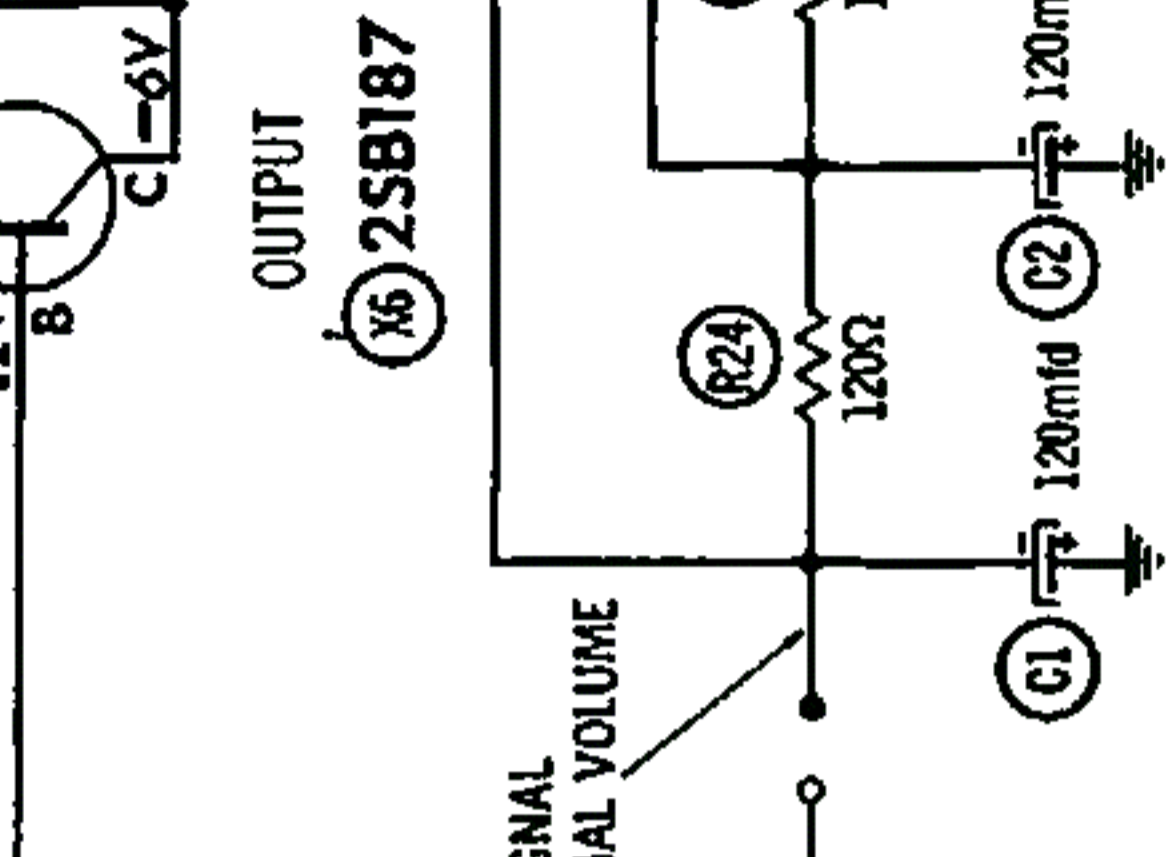
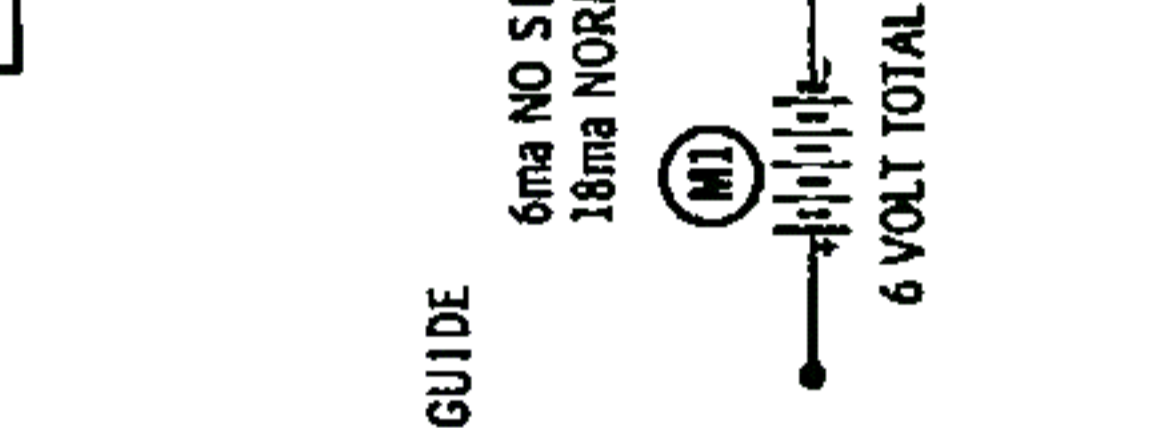
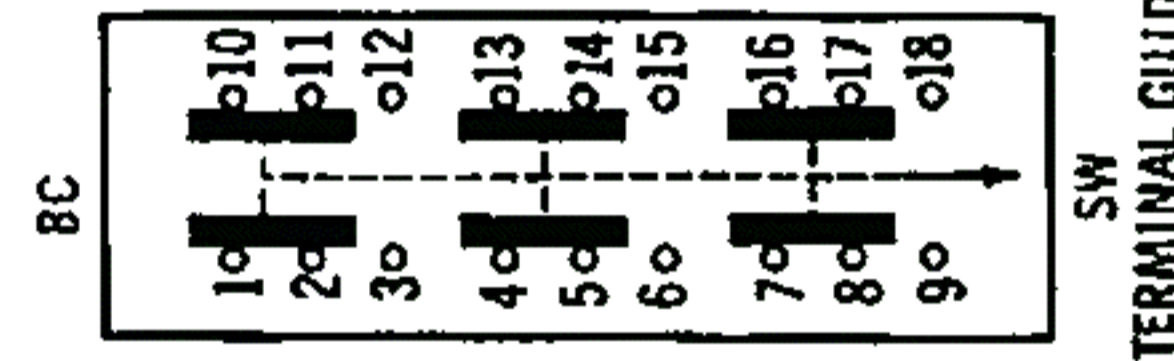


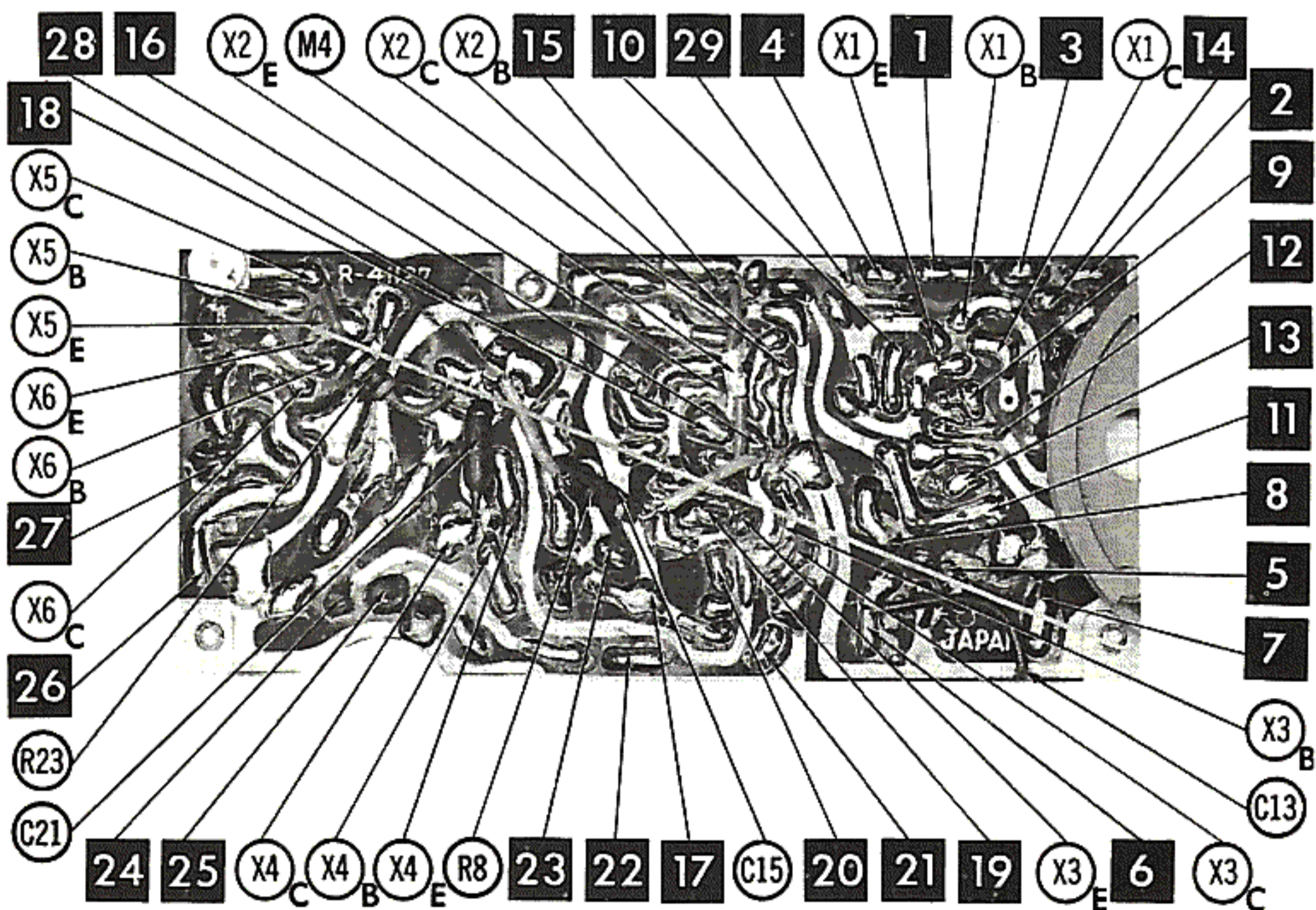
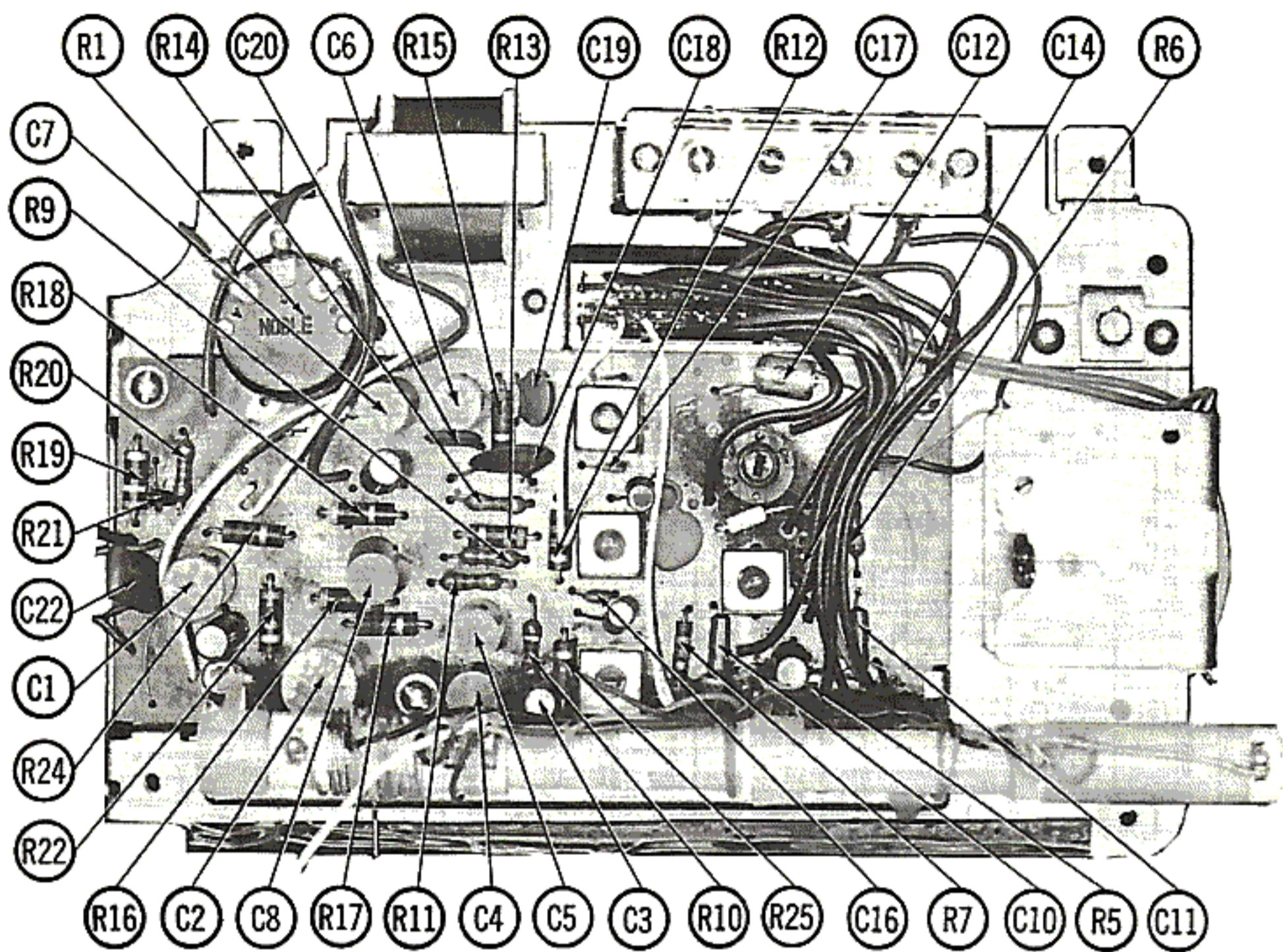
HOWARD W. SAMS & CO., INC. Indianapolis 6, Indiana



1. Voltage measurements taken with vacuum tube voltmeter.
2. All controls set for normal operation, no signal applied.
3. Measured values are from socket pin or terminal to common ground.
4. All terminals viewed from bottom unless otherwise designated.
5. Numbers assigned to terminals may not be found on the unit.
6. Supply voltage maintained at rated value for voltage readings.
7. Resistance measurements not given because of the wide variation in internal resistance of transistor.

A PHOTOFAC STANDARD NOTATION SCHEMATIC
with CIRCUITACE





TRANSISTORS

ITEM No.	ORIG. TYPE	USE	REPLACEMENT DATA			NOTES
			DELCO PART No.	GENERAL ELECTRIC PART No.	RCA PART No.	
X1	2SA80	Converter	DS25	GE9		PNP
X2	2SA202	1st IF Amp	DS25	GE9		PNP
X3	2SA203	2nd IF Amp.	DS25	GE9		PNP
X4	2SB186	Driver	DS26	GE2	2N406	PNP
X5	2SB187	Output	DS26	GE2	2N408	PNP
X6	2SB187	Output	DS26	GE2	2N408	PNP

ELECTROLYTIC CAPACITORS

ITEM No.	RATING		REPLACEMENT DATA						
	CAP.	VOLT.	Channel Master PART No.	AEROVOX PART No.	CORNELL-DUBILIER PART No.	GENERAL ELECTRIC PART No.	GENERAL INSTRUMENT PART No.	MALLORY PART No.	SPRAGUE PART No.
C1	120	6	A023	BCD6100	ECSP125-15	MT1-21	BL1721	PET1400	TE-1060
C2	120	10	A023	BCD10100	ECSP125-15	MT1-19	BL1830	PET1400	TE-1060
C3	5	6	A010	BCD6005	ECSP5-15	MT1-3	MLV5-6	TT6X5	VL-1084
C4	30	6	A009	BCD6025	ECSP30-15	MT1-13	MLV30-6	TT6X30	TE-1092
C5	30	6	A009	BCD6025	ECSP30-15	MT1-13	MLV30-6	TT6X30	TE-1092
C6	30	6	A009	BCD6025	ECSP30-15	MT1-13	MLV30-6	TT6X30	TE-1092
C7	30	6	A009	BCD6025	ECSP30-15	MT1-13	MLV30-6	TT6X30	TE-1092
C8	30	6	A009	BCD6025	ECSP30-15	MT1-13	MLV30-6	TT6X30	TE-1092

FIXED CAPACITORS

ITEM No.	RATING	REMARKS	REPLACEMENT DATA					
			AEROVOX PART No.	CENTRALAB PART No.	CORNELL-DUBILIER PART No.	ELMENDO PART No.	MALLORY PART No.	SPRAGUE PART No.
C10	.005		TTD-005	CK-502	H1		TA-250	TG-D50
C11	.0025		SI2500	D6-252	LA10D25-C4		GP-225	5GA-D25
C12	.0025		SI2500	D6-252	LA10D25-C4		GP-225	5GA-D25
C13	5		NPO-D15	DTZ-4R7	C10V47C	CCTO-050	CNO-547	10TCC-V50
C14	330		DI-330	D6-331	LA10T33-C4		JL-333	10TCC-T33
C15	.04		TTD-05	CK-503	H5		TA-150	TG-S50
C16	10		NPO-D1 10	LTZ-10	C10Q1C	CCTO-100	CNo-410	10TCC-Q10
C17	6		NPO-D1 6.8	DTZ-6R8	C10V68C	CCTO-6R8	CNO-668	10TCC-V56
C18	.04		TTD-05	CK-503	H5		TA-150	TG-S50
C19	.02		TTD-02	CK-203	H3		TA-120	TG-S20
C20	.01		TTD-01	CK-103	H2		TA-110	TG-S10
C21	500			DM-501				
C22	.05		TTD-05	CK-503	H5		TA-150	TG-S50

CONTROLS

All wattages 1/2 watt, or less, unless otherwise listed.

ITEM No.	USE	RESISTANCE	REPLACEMENT DATA					
			Channel Master PART No.	CENTRALAB PART No.	CLAROSTAT PART No.	CTS-IRC PART No.	MALLORY PART No.	
R1	Volume and Switch	5000Ω	E022	B-11, KR-1 or (F2-5000, SU204, KR-1)			Q13-114, 76-1	UA53A, SL-3500 US41 (RU53A, US41, SL-3500, SL35 or U-12, US26)

COILS (RF-IF)

ITEM No.	USE	REPLACEMENT DATA					NOTES
		Channel Master PART No.	MERIT PART No.	MILLER PART No.	STANCOR PART No.	WORKMAN PART No.	
L1	Loopstick	E066					
L2	SW Osc.						
L3	BC Osc.						
L4	1st IF	C010					
L5	2nd IF	C011					
L6	3rd IF	C034					

DESCRIPTION

TRANSFORMER (DRIVER)

ITEM No.	TURNS RATIO		REPLACEMENT DATA				NOTES
			Channel Master PART No.	MERIT PART No.	STANCOR PART No.	THORDARSON PART No.	
	PRI.	SEC.					
T1	1.7	1	C085				

TRANSFORMER (AUDIO OUTPUT)

ITEM No.	IMPEDANCE		REPLACEMENT DATA				NOTES
			Channel Master PART No.	MERIT PART No.	STANCOR PART No.	THORDARSON PART No.	
	PRI.	SEC.					
T2	200Ω CT	3-4Ω	C036				

SPEAKER

ITEM No.	TYPE		REPLACEMENT DATA		NOTES
			Channel Master PART No.	QUAM PART No.	
SP1	4 3/4"	PM	3-4Ω	G096	5A07

BATTERIES

ITEM No.	VOLTAGE	Channel Master PART No.	REPLACEMENT DATA			NOTES
			BURGESS	EVEREADY	MALLORY	
M1	1½V		930 (AL-9) (HG-9)	1015 (E91) (E9)	M-15R (MN1500) (ZM-9)	4 Used

MISCELLANEOUS

ITEM No.	PART NAME	Channel Master PART No.	NOTES
M2	Tuning Gang	A053	2 Gang (1N60) (1N60) (1N60) Selector Slide Type
M3	Diode	F136	
M4	Diode (AVC)	F136	
M5	Diode (AM Det)	F136	
M6	Switch	E067	

CABINETS & CABINET PARTS

(When Ordering Specify Model, Chassis & Color)

ITEM	PART No.	ITEM	PART No.
Dial Pointer	F190	Cabinet Front Panel	G049
Knob	F027	Cabinet Back	G048

WIRING DATA

General-use Unshielded Hook-up Wire	Use BELDEN No. 8530 (Solid 22AWG)	Available
	8524 (Stranded 22AWG)	1n
	8570 (Stranded 28AWG)	12 Colors