

PHOTOFACT® Folder

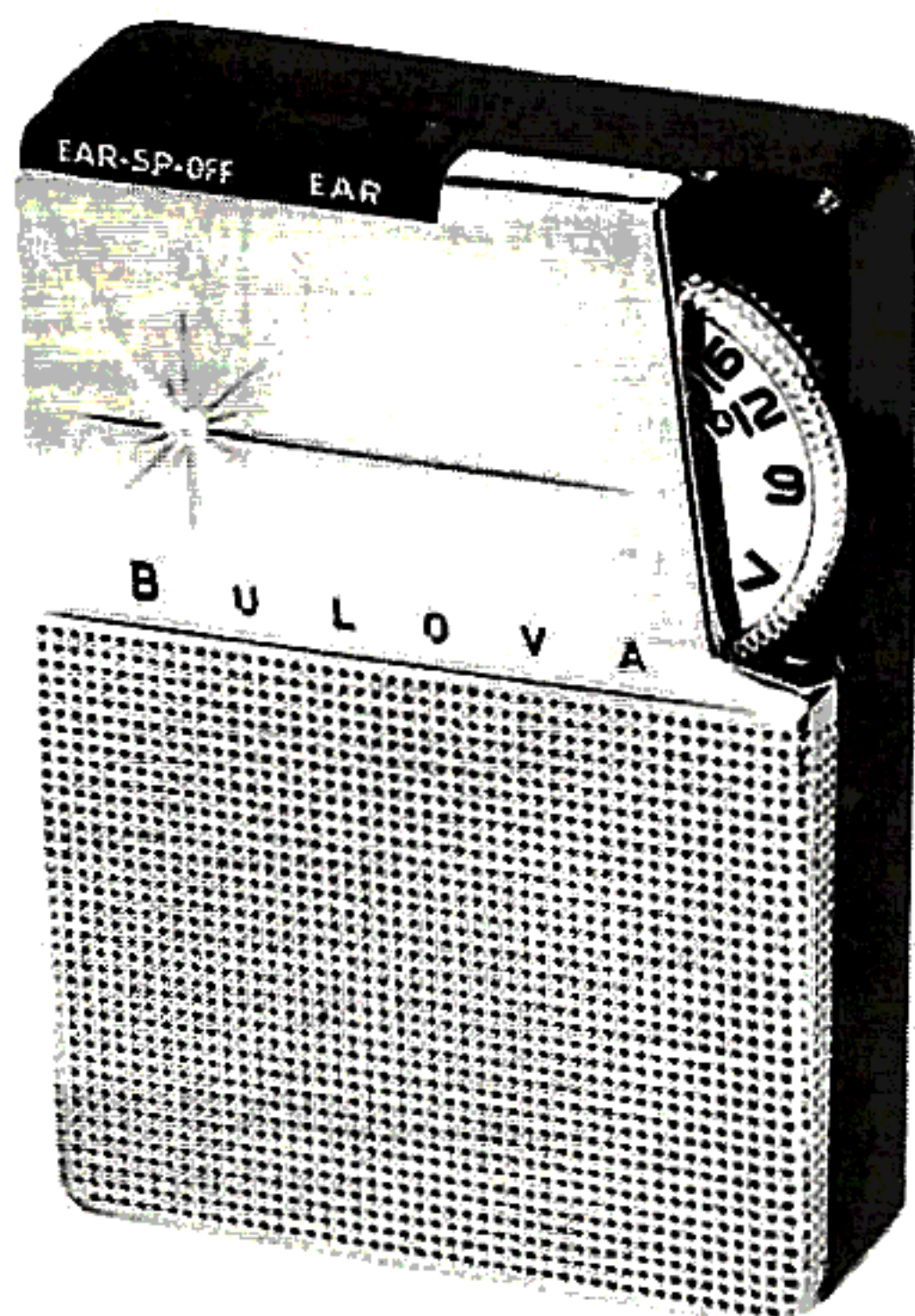
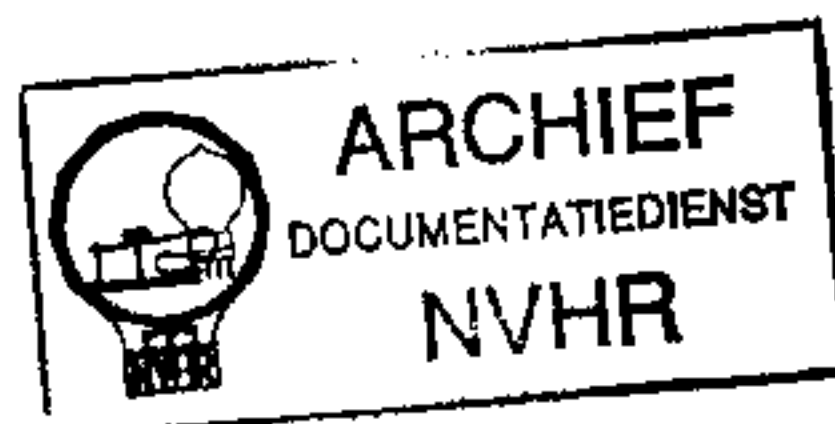
with **CIRCUITRACE™**

**BULOVA MODELS
672, 673, 675, 676**



met dank aan Jef Bos

Ned. Ver. v. Historie v/d Radio



MODEL 672

TRADE NAME	Bulova Models 672, 673, 675, 676		
SUPPLIER	Bulova Watch Co., Bulova Park, Flushing 70, N. Y.		
TYPE SET	Battery Operated Transistorized Portable AM Receiver		
POWER SUPPLY	5 Volts DC	RATING	6MA@5.6 Volts DC (No Signal, Min. Volume)
TUNING RANGE—BROADCAST	540 — 1600KC		12MA@5.6 Volts DC (Signal, Normal Volume)

ALIGNMENT INSTRUCTIONS

ALIGNMENT INSTRUCTIONS—READ CAREFULLY BEFORE ATTEMPTING ALIGNMENT

Volume control should be at maximum position. Output of signal generator should be no higher than necessary to obtain an output reading.

Suggested Alignment Tools:

- A1, A2, A3, A6..... GENERAL CEMENT #5009, 8195, 8274, 8275, 8728, 8729, 8987, 8988, 8989
 WALSCO #2515, 2531, 2532
 A4, A5..... GENERAL CEMENT #5000, 5003, 5066, 8276, 8290, 9087, 9089
 WALSCO #2512, 2525, 2528

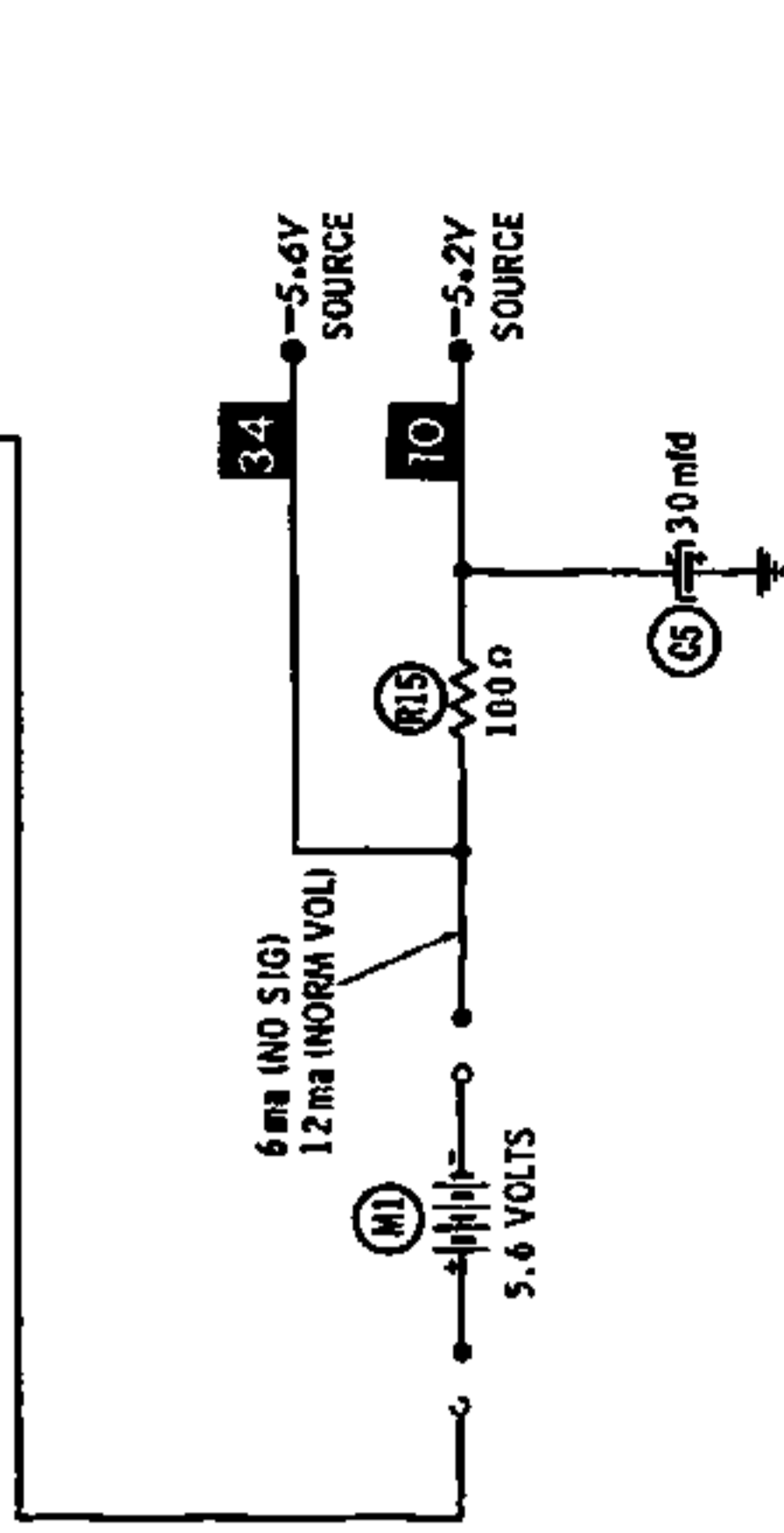
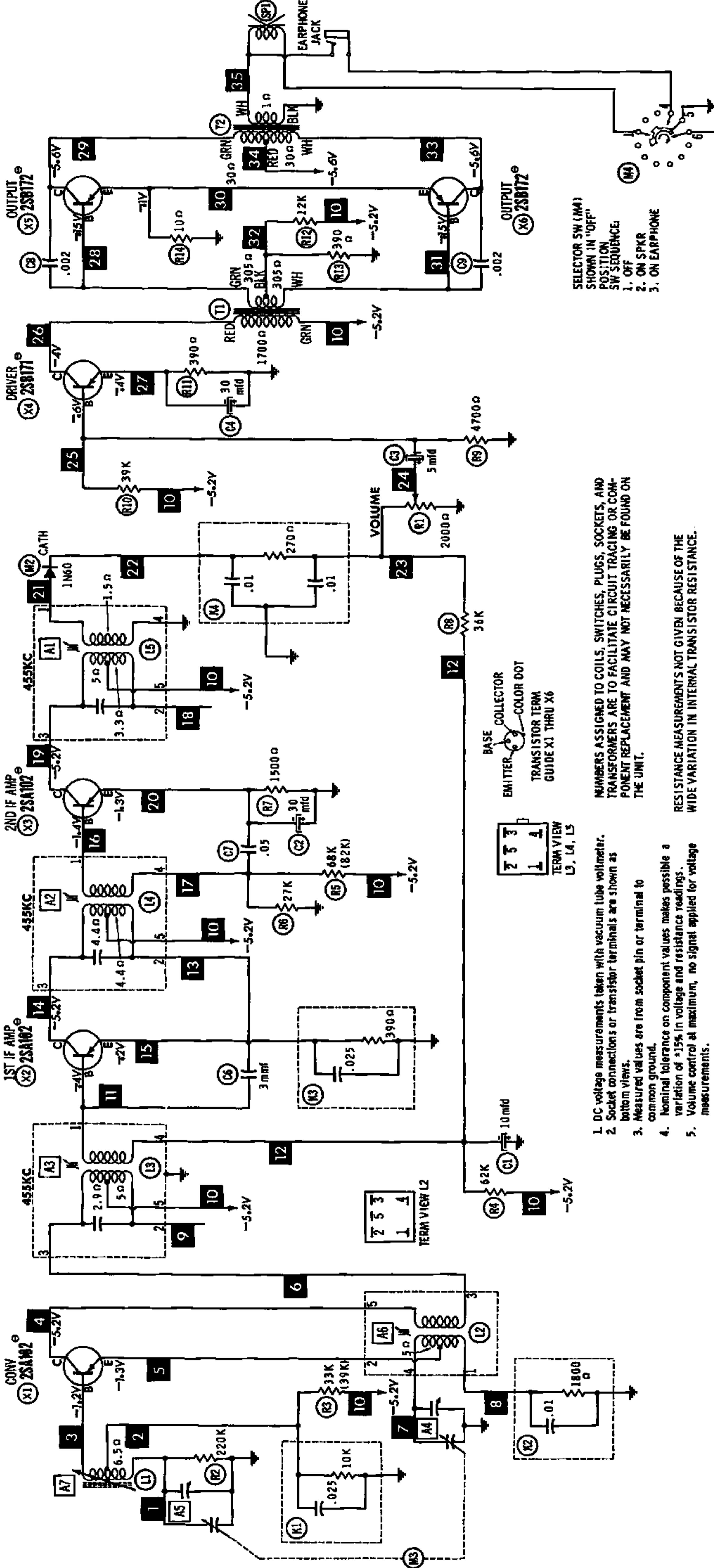
	SIGNAL GENERATOR COUPLING	SIGNAL GENERATOR FREQUENCY	RADIO DIAL SETTING	OUTPUT METER	ADJUST	REMARKS
1.	Fashion loop of several turns of wire and radiate signal into loop of receiver.	455KC (400% Mod.)	Tuning gang fully open.	Across voice coil.	A1, A2, A3	Adjust for maximum output.
2.	"	1600KC	1600KC	"	A4, A5	"
3.	"	600KC	600KC	"	A6, A7	Adjust for maximum output. A7 is adjusted by moving coil turns along ferrite core.

HOWARD W. SAMS & CO., INC. Indianapolis 6, Indiana



The listing of any available replacement part herein does not constitute in any case a recommendation, warranty or guaranty by Howard W. Sams & Co., Inc., as to the quality and suitability of such replacement part. The numbers of these parts have been compiled from information furnished to Howard W. Sams & Co., Inc., by the manufacturers of LF016

the particular type of replacement part listed. Reproduction or use, without express permission, of editorial or pictorial content, in any manner, is prohibited. No patent liability is assumed with respect to the use of the information contained herein. ©1962 Howard W. Sams & Co., Inc., Indianapolis 6, Indiana. Printed in U.S. of America



SELECTOR SW (M4)
SHOWN IN "OFF"
POSITION
SW SEQUENCE
1. OFF
2. ON SPKR
3. ON EARPHONE

NUMBERS ASSIGNED TO COILS, SWITCHES, PLUGS, SOCKETS, AND TRANSFORMERS ARE TO FACILITATE CIRCUIT TRACING OR COMPONENT REPLACEMENT AND MAY NOT NECESSARILY BE FOUND ON THE UNIT.

RESISTANCE MEASUREMENTS NOT GIVEN BECAUSE OF THE WIDE VARIATION IN INTERNAL TRANSISTOR RESISTANCE.

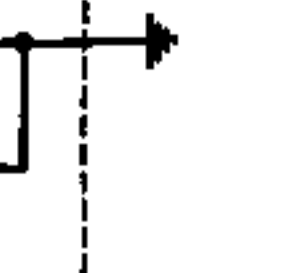
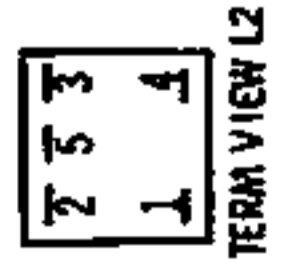
SEE PARTS LIST FOR ALTERNATE VALUE OR APPLICATION

**BULOVA MODELS
672, 673, 675, 676**

1. DC voltage measurements taken with vacuum tube voltmeter.
2. Socket connections or transistor terminals are shown as bottom views.
3. Measured values are from socket pin or terminal to common ground.
4. Nominal tolerance on component values makes possible a variation of $\pm 15\%$ in voltage and resistance readings.
5. Volume control at maximum, no signal applied for voltage measurements.

A PHOTOFACT STANDARD NOTATION SCHEMATIC
with **CIRCUITRACE**
© Howard W. Sams & Co., Inc. 1962

BASE COLLECTOR
EMITTER
TRANSISTOR TERM
GUIDE X1 THRU X6



PARTS LIST AND DESCRIPTIONS

TRANSISTORS

ITEM No.	ORIG. TYPE	USE	REPLACEMENT DATA		NOTES
			RCA PART No.	RAYTHEON PART No.	
X1	2SA102	Converter	2N1527		PNP
X2	MC102*	Converter			
X2	2SA102	1st IF Amplifier	2N1525		PNP
X3	MC102*	1st IF Amplifier			
X3	2SA102	2nd IF Amplifier	2N1525		PNP
X4	MC102*	2nd IF Amplifier			
X4	2SB171	Driver	2N406		PNP
X5	OC71*	Driver			
X5	2SB172	Output	2N408		PNP
X6	OC72*	Output			
X6	2SB172	Output	2N408		PNP
X6	OC72*	Output			

* Alternate

ELECTROLYTIC CAPACITORS

ITEM No.	RATING		REPLACEMENT DATA						
	CAP.	VOLT.	BULOVA PART No.	AEROVOX PART No.	CORNELL-DUBILIER PART No.	GENERAL ELECTRIC PART No.	MALLORY PART No.	PYRAMID PART No.	SPRAGUE PART No.
C1	10	3	T-49		NLW10-6		TT3X10		
C2	30	3	T-50						
C3	5	3	T-48				TT6X5		
C4	30	3	T-50						
C5	30	6	T-51		NLW30-6	MT1-13	TT6X30	MLV30-6	TE-1092

FIXED CAPACITORS

ITEM No.	RATING	REMARKS	REPLACEMENT DATA					
			AEROVOX PART No.	CENTRALAB PART No.	CORNELL-DUBILIER PART No.	ELMENCO PART No.	MALLORY PART No.	SPRAGUE PART No.
C6	3		NPO-SI 3.0	TCZ-3R3	C10V3C	CCTO-3R3	CNO-533	10TCC-V33
C7	.05		C80V503AM	DA-503	H-05S5		TA-150	TG-S50
C8	.002		BPD-002	DM-202	BYA10D2	CCD-202	B-220	5HK-D20
C9	.002		BPD-002	DM-202	BYA10D2	CCD-202	B-220	5HK-D20

CONTROLS

ITEM No.	RATING		REPLACEMENT DATA				INSTALLATION NOTES	
	RESISTANCE	WATTS	BULOVA PART No.	CENTRALAB PART No.	CLAROSTAT PART No.	CTS-IRC PART No.		MALLORY PART No.
R1	2000Ω	1/4	T-61					Volume (Includes Knob)

RESISTORS

All wattages 1/2 watt, or less, unless otherwise listed.

ITEM No.	RATING	REPLACEMENT DATA			ITEM No.	RATING	REPLACEMENT DATA		
		IRC PART No.	WORKMAN TV PART No.	REMARKS			IRC PART No.	WORKMAN TV PART No.	REMARKS
R2	220K				R9	4700Ω			
R3	39K			(39K)*	R10	39K			
R4	62K				R11	390Ω			
R5	68K			(82K)*	R12	12K			
R6	27K				R13	390Ω			
R7	1500Ω				R14	10Ω			
R8	36K				R15	100Ω			

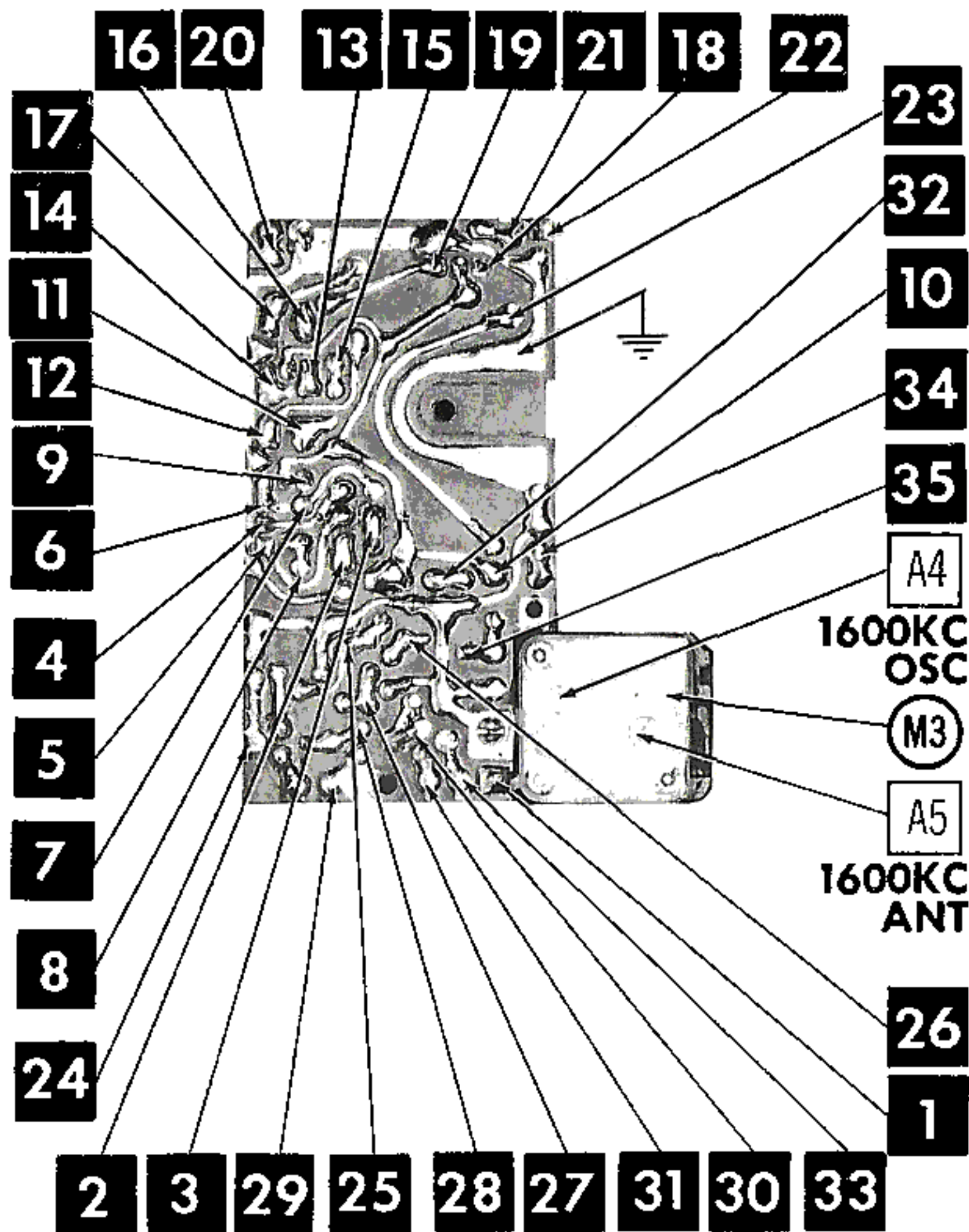
* Alternate Value.

COMPONENT COMBINATIONS

ITEM No.	USE	DESCRIPTION	BULOVA PART No.	REPLACEMENT DATA
K1	AVC Filter	.025mfd, 10K	T-55	
K2	Osc. Coil Primary	.01mfd, 1800Ω	T-53	
K3	1st IF Emitter	.025mfd, 390Ω	T-54	
K4	Diode Filter	.01mfd, .01mfd, 270Ω	T-56	

PRINTED BOARD

A Howard W. Sams **CIRCUITRACI** Photo



PARTS LIST AND DESCRIPTIONS (Continued)

COILS (RF-IF)

ITEM No.	USE	REPLACEMENT DATA					NOTES
		BULOVA PART No.	Merit PART No.	Miller PART No.	Stancor PART No.	Workman TV PART No.	
L1	Loopstick	T-46					
L2	Osc.	T-18					
L3	1st IF	T-19					
L4	2nd IF	T-20					
L5	3rd IF	T-21					

TRANSFORMER (DRIVER)

ITEM No.	TURNS RATIO		REPLACEMENT DATA					NOTES
	PRI.	SEC.	BULOVA PART No.	Merit PART No.	Stancor PART No.	Thordarson PART No.	Triad PART No.	
T1	1.5	1	T-47					

TRANSFORMER (AUDIO OUTPUT)

ITEM No.	IMPEDANCE		REPLACEMENT DATA					NOTES
	PRI.	SEC.	BULOVA PART No.	Merit PART No.	Stancor PART No.	Thordarson PART No.	Triad PART No.	
T2	1000Ω CT	6-8Ω	T-59					

SPEAKER

ITEM No.	TYPE			REPLACEMENT DATA		NOTES
	SIZE	FIELD	V. C. IMP.	BULOVA PART No.	QUAM PART No.	
SP1	1 3/4"	PM	6-8Ω	T-60		

BATTERIES

ITEM No.	VOLTAGE	BULOVA PART No.	REPLACEMENT DATA						NOTES
			BURGESS		EVEREADY		MALLORY		
			"A"	"B"	"A"	"B"	"A"	"B"	
M1	5.6V	24		H164		E164		TR164	

SIGNAL DIODES

ITEM No.	ORIG. TYPE	REPLACEMENT DATA			NOTES
		BULOVA PART No.	GENERAL ELECTRIC PART No.	RAYTHEON PART No.	
M2	0A70	T-17		1N60	Detector

MISCELLANEOUS

ITEM No.	PART NAME	BULOVA PART No.	NOTES
M3	Tuning Cap.	T-22	2 Gang Off-On (Includes Earphone Jack)
M4	Switch	T-10	

CABINETS & CABINET PARTS

(When Ordering Cabinets & Cabinet Parts, Specify Model, Chassis & Color)

NAME	PART NO.	DESCRIPTION
Knob		Volume, Part of Volume Control
Knob	T-25	Tuning
Cabinet	T-23	Specify Color

WIRING DATA

General-use Unshielded Hook-up Wire Use BELDEN No. 8530 (Solid) Available in Ten Colors
8524 (Stranded) Available in Ten Colors

CHASSIS—TOP VIEW

