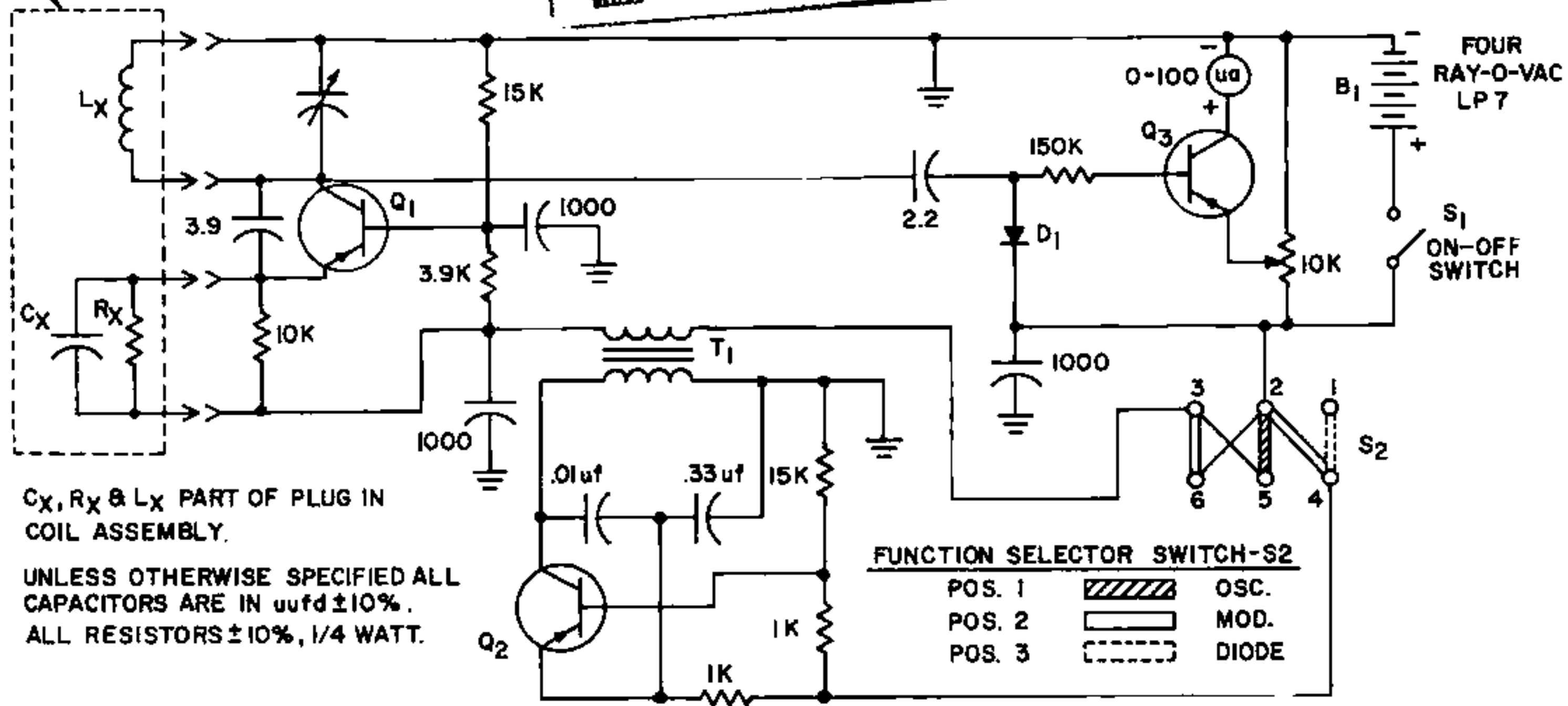


PLUG IN COIL ASS'Y



C_x, R_x & L_x PART OF PLUG IN COIL ASSEMBLY.

UNLESS OTHERWISE SPECIFIED ALL CAPACITORS ARE IN $\mu\text{ufd} \pm 10\%$. ALL RESISTORS $\pm 10\%$, 1/4 WATT.

FIG.1 SCHEMATIC