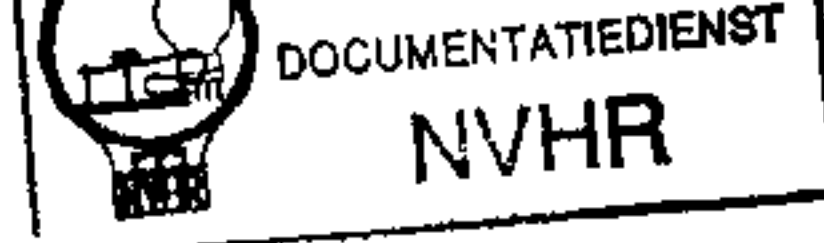
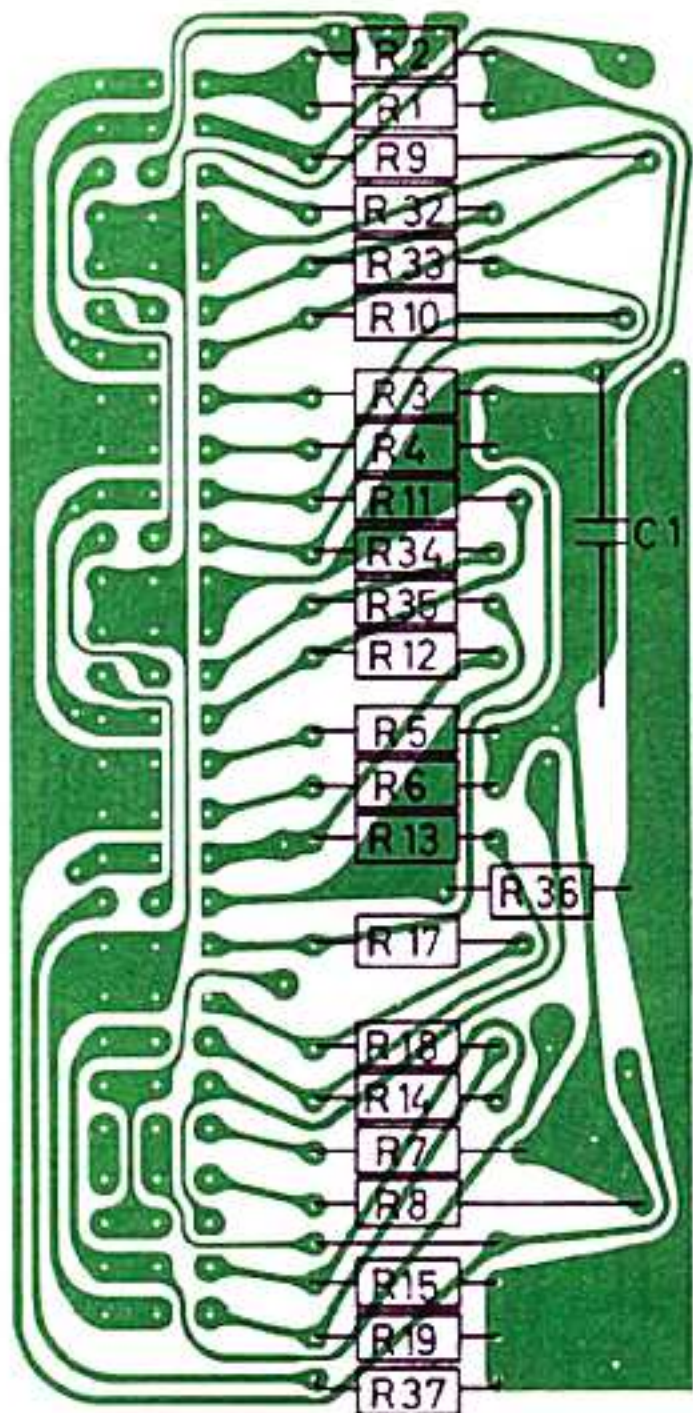


Stykliste/Parts List



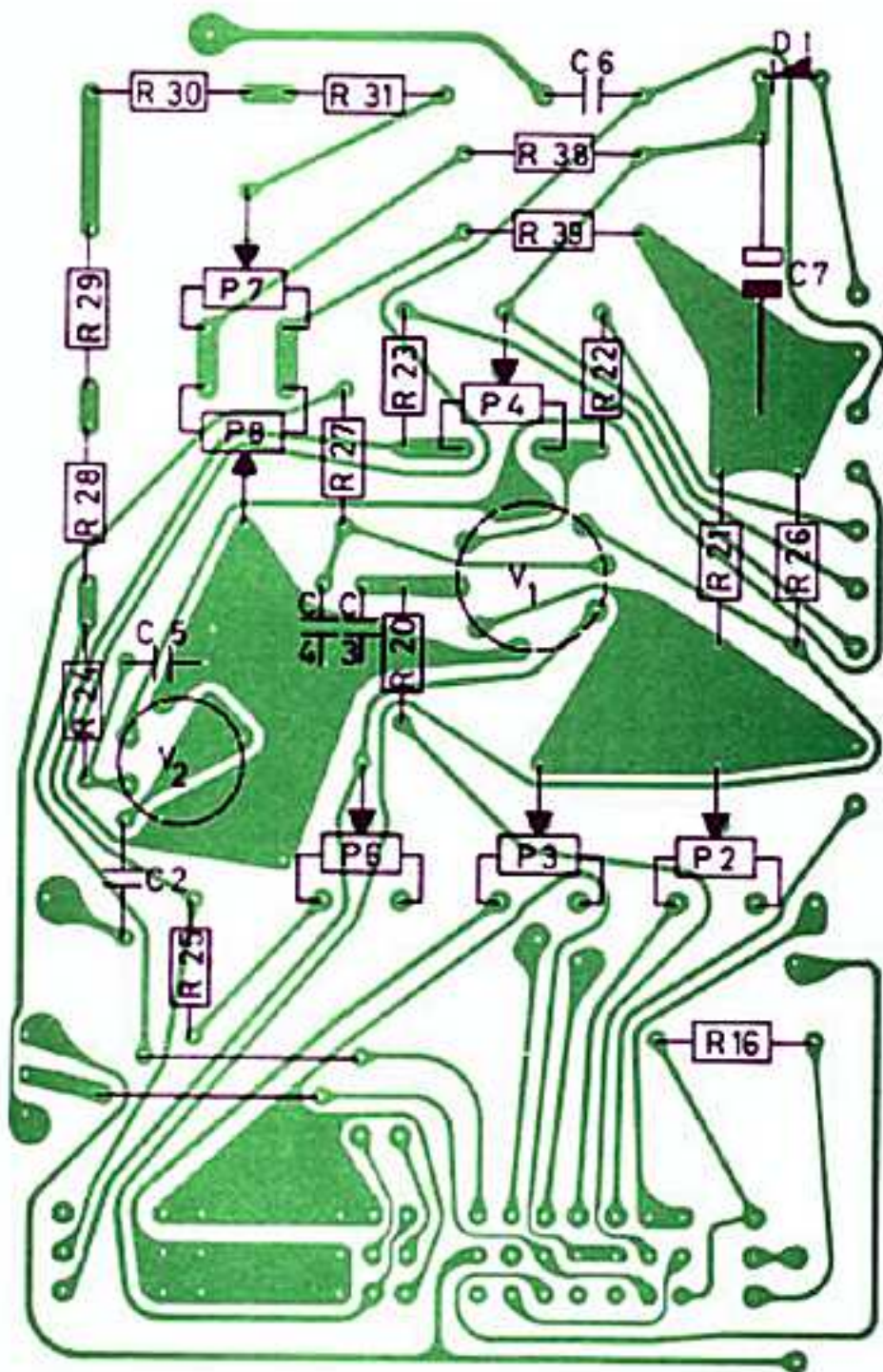
R1		Modstand	Resistor	10Ω	5%	0,33W
R2		Modstand	Resistor	0...220Ω	5%	0,33W
R3		Modstand	Resistor	99,5Ω	1%	0,125W
R4		Modstand	Resistor	1KΩ	1%	0,125W
R5		Modstand	Resistor	10KΩ	1%	0,125W
R6		Modstand	Resistor	100KΩ	1%	0,125W
R7		Modstand	Resistor	1MΩ	1%	0,25W
R8		Modstand	Resistor	10MΩ	1%	1W
R9		Modstand	Resistor	6,8MΩ	1%	1W
R10		Modstand	Resistor	2,2MΩ	1%	0,25W
R11		Modstand	Resistor	680KΩ	1%	0,25W
R12		Modstand	Resistor	220KΩ	1%	0,125W
R13		Modstand	Resistor	68KΩ	1%	0,125W
R14		Modstand	Resistor	22KΩ	1%	0,125W
R15		Modstand	Resistor	10KΩ	1%	0,125W
R16		Modstand	Resistor	1MΩ	1%	0,25W
R17		Modstand	Resistor	1MΩ	1%	0,25W
R18		Modstand	Resistor	450KΩ	1%	0,125W
R19		Modstand	Resistor	182KΩ	1%	0,125W
R20	5011076	Modstand	Resistor	3,3MΩ	5%	0,33W
R21	5012045	Modstand	Resistor	100KΩ	5%	1W
R22	5011034	Modstand	Resistor	2,2KΩ	5%	0,33W
R23	5011034	Modstand	Resistor	2,2KΩ	5%	0,33W
R24		Modstand	Resistor	18MΩ	5%	0,5W
R25	5011028	Modstand	Resistor	1KΩ	5%	0,33W
R26	5012045	Modstand	Resistor	100KΩ	5%	1W
R27	5011076	Modstand	Resistor	3,3MΩ	5%	0,33W
R28	5011133	Modstand	Resistor	22MΩ	5%	0,5W
R29	5011133	Modstand	Resistor	22MΩ	5%	0,5W
R30	5011133	Modstand	Resistor	22MΩ	5%	0,5W
R31	5011133	Modstand	Resistor	22MΩ	5%	0,5W
R32		Modstand	Resistor	6,8MΩ	5%	0,33W
R33	5011074	Modstand	Resistor	2,2MΩ	5%	0,33W
R34	5011143	Modstand	Resistor	680KΩ	5%	0,33W
R35	5011141	Modstand	Resistor	220KΩ	5%	0,33W
R36	5010313	Modstand	Resistor	100KΩ	5%	0,33W
R37		Modstand	Resistor	33KΩ	5%	0,33W
R38	5012039	Modstand	Resistor	33KΩ	5%	1W
R39	5012043	Modstand	Resistor	68KΩ	5%	1W

P1	5300067	Potentiometer	Potentiometer	10K Ω lin.	0,2W
P2		Potentiometer	Potentiometer	2,5K Ω lin.	0,1W
P3		Potentiometer	Potentiometer	2,5K Ω lin.	0,1W
P4		Potentiometer	Potentiometer	5K Ω lin.	0,1W
P5	5300066	Potentiometer	Potentiometer	4,7K Ω lin.	0,2W
P6		Potentiometer	Potentiometer	2,5K Ω lin.	0,1W
P7		Potentiometer	Potentiometer	25K Ω lin.	0,1W
P8		Potentiometer	Potentiometer	25K Ω lin.	0,1W
C1		Kondensator, polyest.	Capacitor, polyest.	0,1 μ F	1250V
C2	4133006	Kondensator, polyest.	Capacitor, polyest.	0,22 μ F	250V
C3	4133003	Kondensator, polyest.	Capacitor, polyest.	10nF	250V
C4	4133003	Kondensator, polyest.	Capacitor, polyest.	10nF	250V
C5	4133004	Kondensator, polyest.	Capacitor, polyest.	22nF	250V
C6	4021001	Kondensator, keram.	Capacitor, ceramic	4,7nF	5KV
C7		Elektrolytkond.	Capacitor, electrol	16 μ F	400V
D1	8310018	Diode	Diode		E250C750
		Batteri	Battery		736-1,5V
	8450020	Drejespoleinstr.	Moving coil meter		150 μ A
		Sikring	Fuse	80mA	250V
	8013136	Nettransformer	Power Transformer		
	6271086	Netledning	Power-cord		3x0,75mm ²
	6144661	PW-plade, dekade	PW-board, decade		
	6144662	PW-plade, forst.	PW-board, amplifier		
	7401001	Omskifter, netsp.	Switch, mains tapping		
	7400018	Omskifter, dekade	Switch, decade		MX7
	7400019	Omskifter, funktion	Switch, function		MX7
	8201023	Rør	Vacuum tube	ECC82	(12AU7)
	8201029	Rør	Vacuum tube	EAA91	(6AL5)
	8230025	Indikatorlampe	Panel lamp		7V-30mA
	7201016	Indikatorlampefatn.	Panel lamp socket	3131018/7500027	
		Klemskrue, rød	Input termination, red		JK6272
		Klemskrue, sort	Input termination, black		JK6272
		Knap	Knob	020-232/040-102	
	0585027	Gummifod	Rubber foot		



Komponentplacering, dekade.

Component Location, decade.



Komponentplacering, forstærker.

Component Location, amplifier