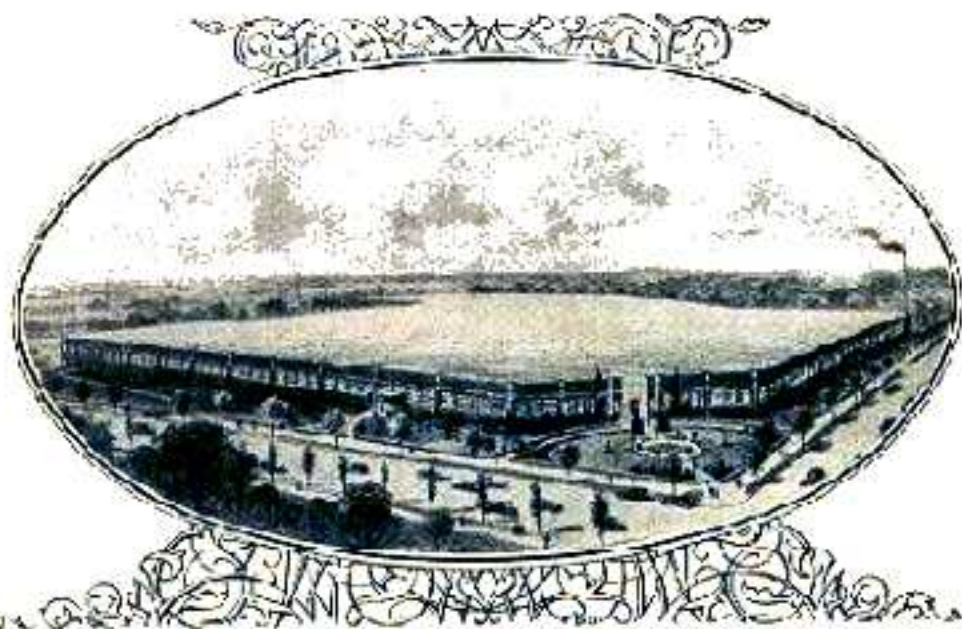


# ATWATER KENT RADIO INSTRUCTION BOOK

Vol. 3

IARC No. 7857

PRICE 50 CENTS



ATWATER KENT MFG. COMPANY

4700 Wissahickon Avenue

*Philadelphia*

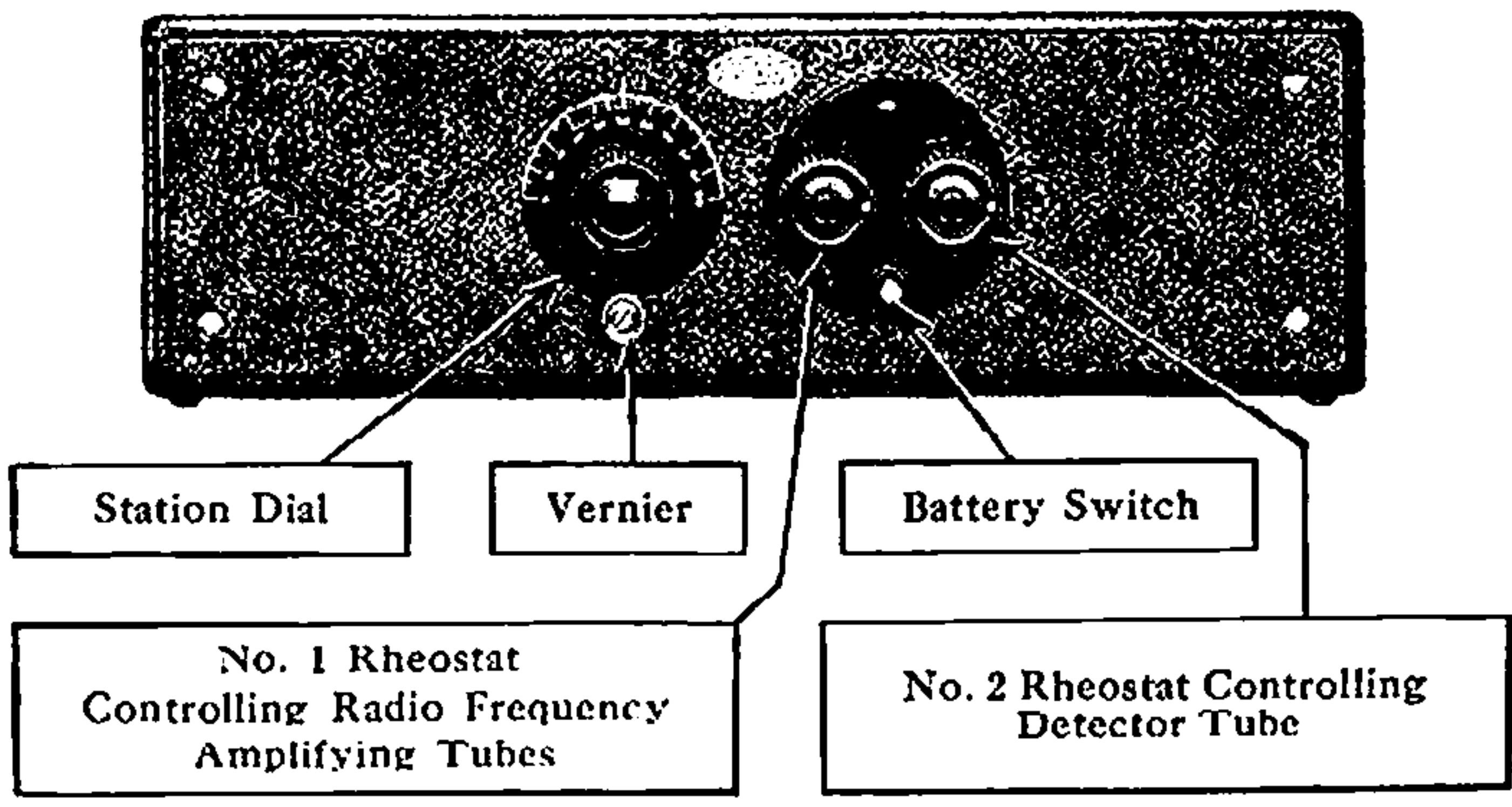
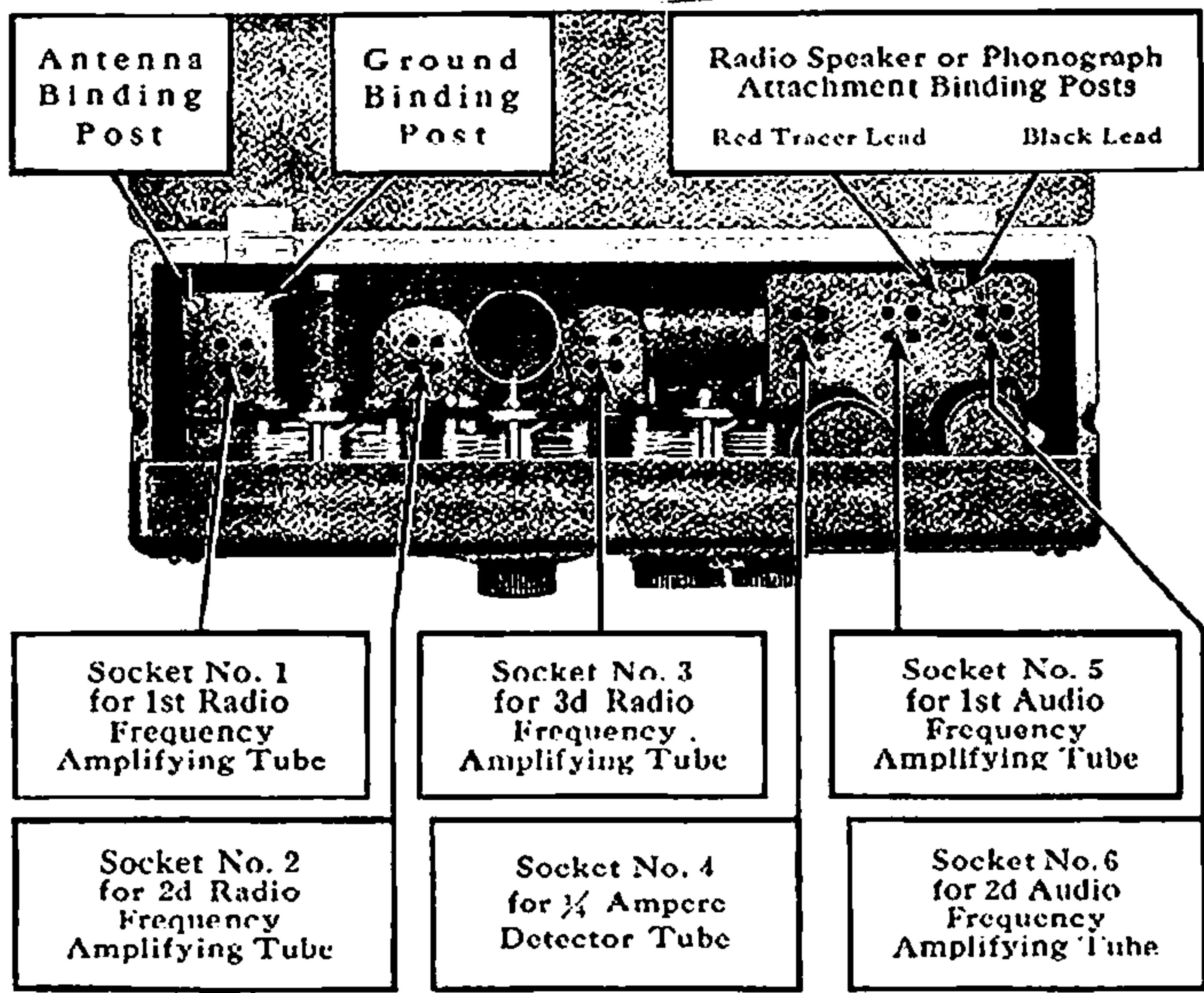


Illustration 29  
LOCATION OF CONTROLS, ETC., FOR MODEL 30

Volume—that is, loudness—may be regulated by adjusting the Volume Control Rheostat. For less volume, turn the rheostat to the left—counter clockwise. For more volume, turn to right—clockwise. Do not be alarmed if the rheostat becomes hot after continued operation of the set.

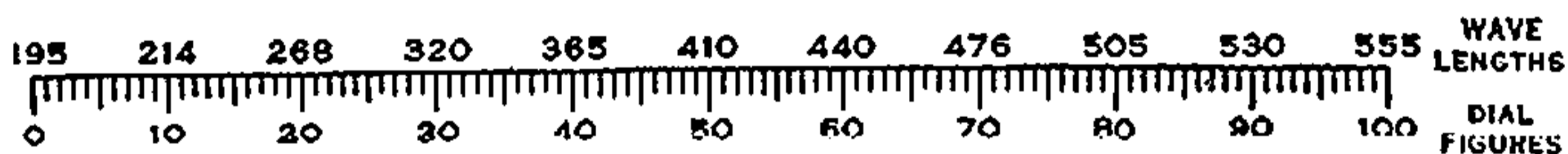
Rheostats do not completely shut off the current, although usually no signal can be heard when they are turned all the way to the left, therefore

Be sure to push in the battery switch when you are through operating the set.

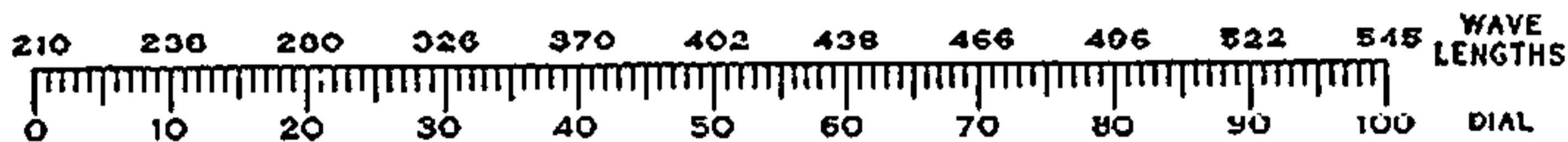
Sec. 2. **SELECTING STATIONS:** Due to the difference in “day and night range” (see PART V, Section 1 for further information), the best results in radio reception will be obtained after night fall. In fact, your first attempt to bring in a station may not be successful because you make this attempt in the day time when no nearby station is broadcasting. If you will refer to your newspaper, you can readily find out at what hour the various stations will be “on the air.”

Your newspaper will also give the stations’ WAVE LENGTH in meters. By referring to the following diagrams you can tell where a station should “come in” on your Station Dial.

As an example, a station sending on 360 meters should be heard by turning the Station Dial (Model 30 or 32), around to approximately 39, and one broadcasting on 496 meters should be received at a point correspondingly higher, or approximately 77. (See illustration 37).



Wave Length Diagram for Models 30 and 32



Wave Length Diagram for Model 35

Sec. 3. **LOGGING THE DIAL:** The dial setting of any station heard may be written down on the Log Card, supplied with the set. Any stations so listed can be instantly returned to by again turning the Station Dial to the setting written in the Log, *provided of course, that the station is broadcasting and within range.*

All excess cable should be coiled up at the battery end of the installation, that is, away from the Receiving Set. In coiling the cable near storage batteries, care should be taken that it is not laid, or does not pass over the top of storage batteries, otherwise the cable or wire covering is apt to be eaten away by the acid fumes.

**CONNECTING BATTERY CABLE TO BATTERIES.** On this page and the pages following are wiring diagrams showing the proper connections of the cable leading from the receiving set to the batteries. Follow the diagram carefully in making your battery connections.

Be sure that all storage battery binding posts are bright and clean and that nuts are screwed down tightly, using pliers if necessary. If the storage battery does not have binding posts it is suggested that two lead-coated battery "pinch clips" be purchased and soldered to the ends of the battery cable red and black wires.

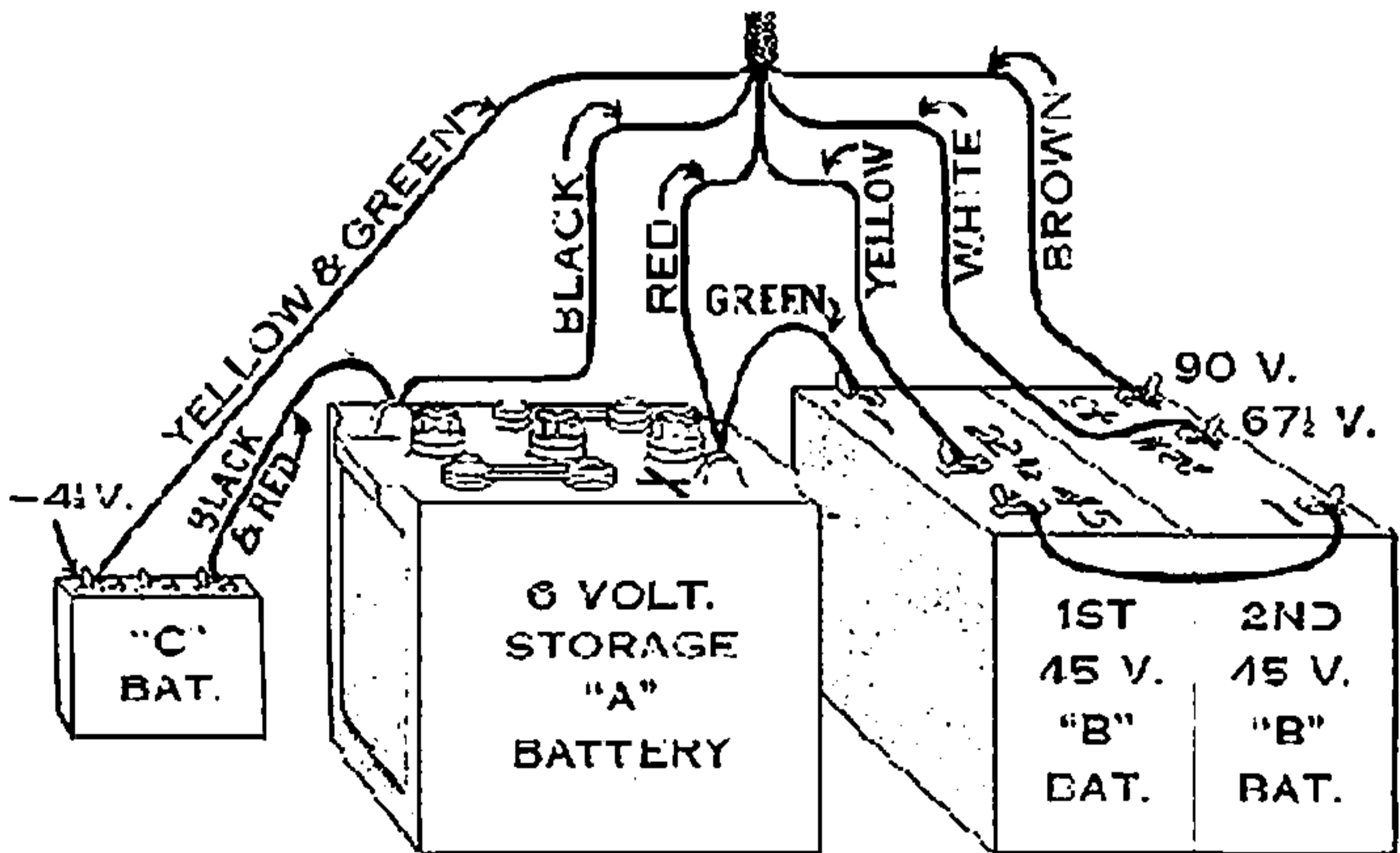


Illustration 25

WIRING DIAGRAMS FOR MODELS 30, 32, 35 AND 20 COMPACT

See Illustration 26 if Fuse Block is used;  
and Illustration 27 if Battery Charger is used.