

**STEP**  
*by*  
**STEP**



**AMROH**

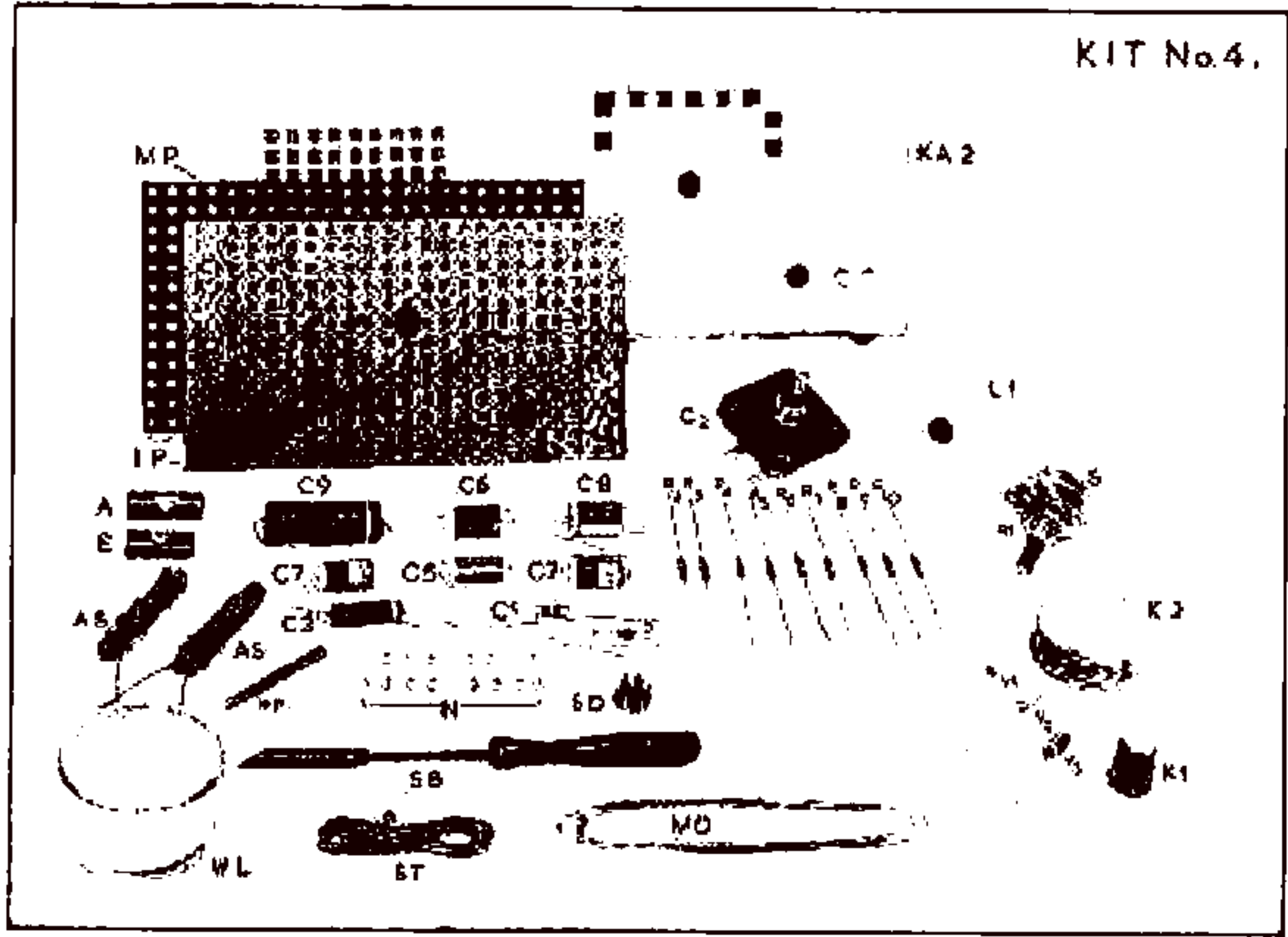
MUIDEN - HOLLAND

**AMROH**

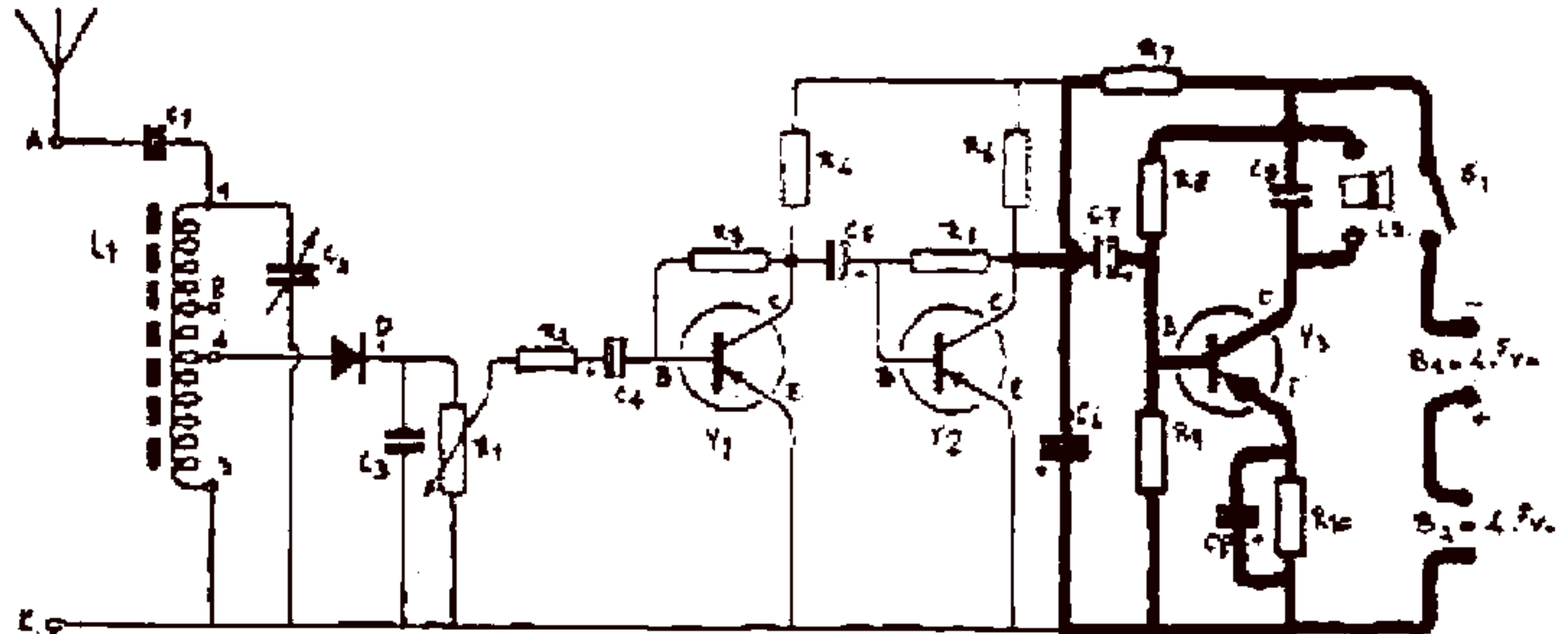




R1	-	470. K $\Omega$	-	
R2	-	10. K $\Omega$	-	
R3	-	220. K $\Omega$	-	
R4	-	4.7K $\Omega$	-	
R5	-	120. K $\Omega$	-	
R6	-	3.3K $\Omega$	-	
R7	-	3.3K $\Omega$	-	
R8	-	56K $\Omega$	-	
R9	-	1.5K $\Omega$	-	
R10	-	100 $\Omega$	-	



# KIT No 4.



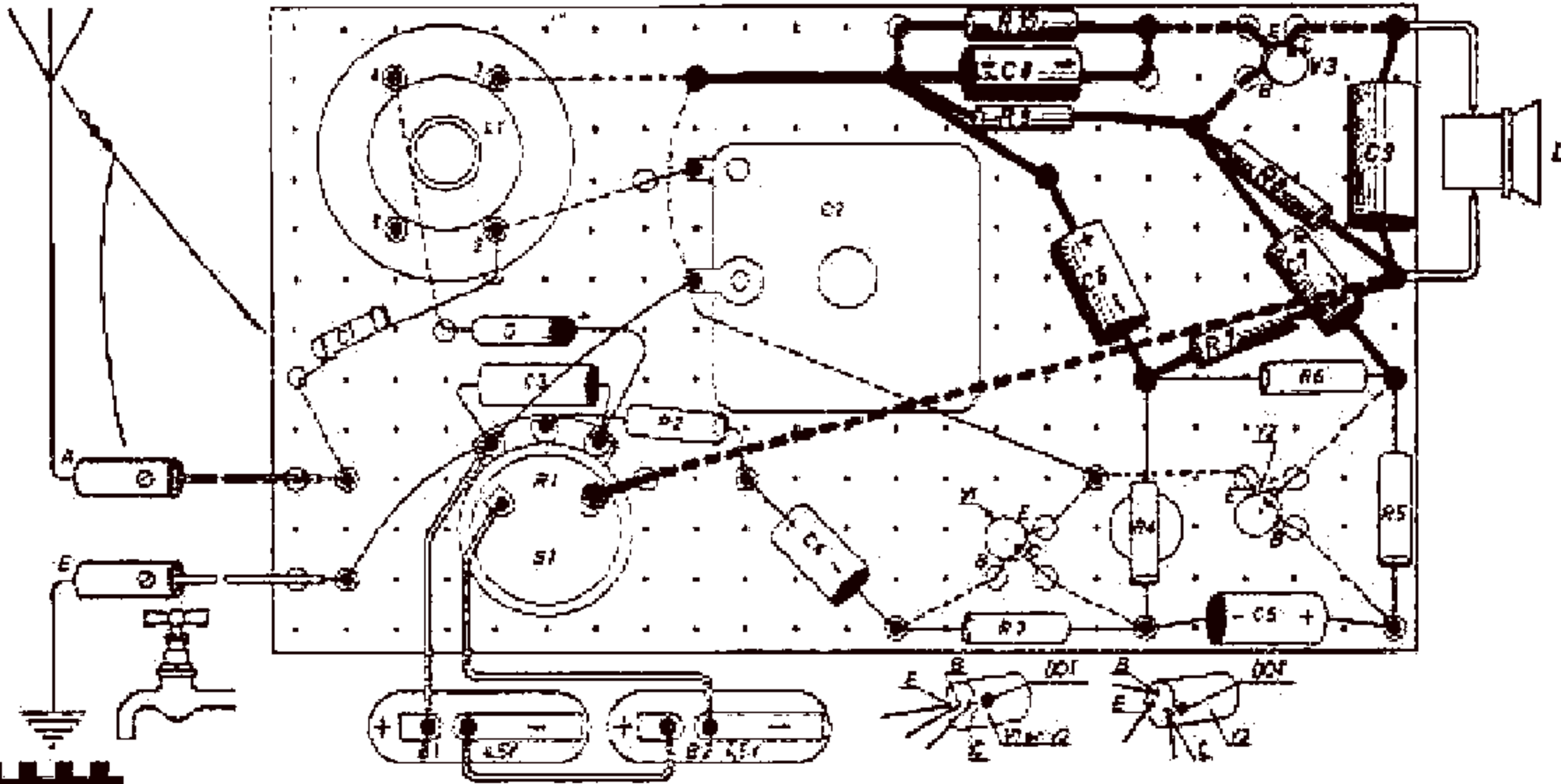
$L_1 = 60\mu$   
 $D = \text{mulector}$   
 $C_1 = 100 \text{ pF}$   
 $C_2 = 10 - 500 \text{ pF}$   
 $C_3 = 1000 \text{ pF}$   
 $C_4 = 10 \mu\text{F} - 6V$   
 $C_5 = 50 \mu\text{F} - 6V$

$R_1 = 47 \text{ k}\Omega - \frac{1}{2}W$   
 $R_2 = 10 \text{ k}\Omega - \frac{1}{2}W$   
 $R_3 = 220 \text{ k}\Omega - \frac{1}{2}W$   
 $R_4 = 4.7 \text{ k}\Omega - \frac{1}{2}W$   
 $R_5 = 150 \text{ k}\Omega - \frac{1}{2}W$   
 $R_6 = 2.2 \text{ k}\Omega - \frac{1}{2}W$   
 $V_1 = 003 (\text{see})$

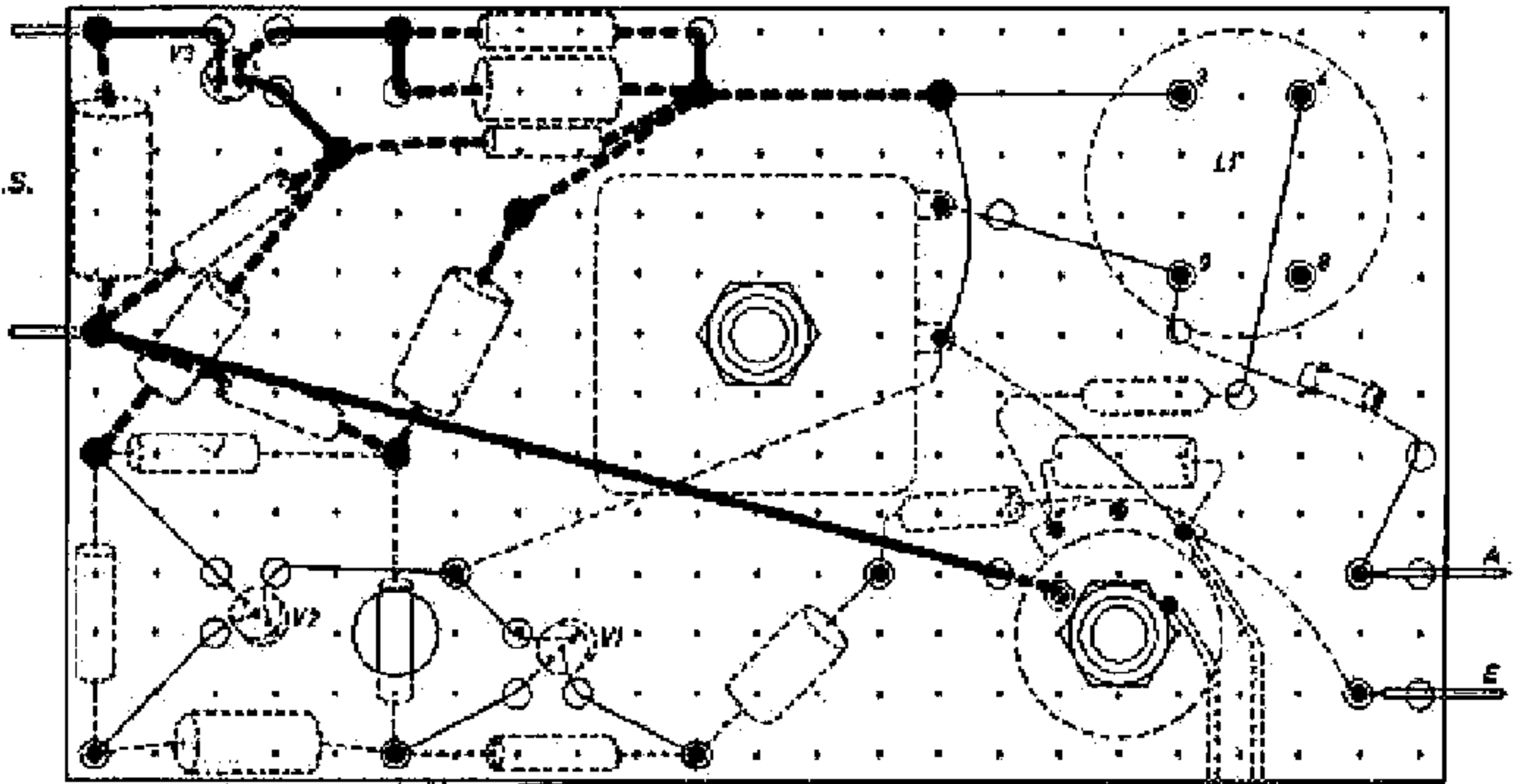
$V_2 = 0N4 (\text{good})$   
 $B_1 = 4.5 \text{ Volt}$   
 $V_3 = 2N408 (\text{break})$   
 $C_6 = 100 \mu\text{F} - 6V$   
 $C_7 = 10 \mu\text{F} - 6V$   
 $C_8 = 100 \mu\text{F} - 6V$   
 $C_9 = 0.1 \mu\text{F}$

$R_7 = 2.2 \text{ k}\Omega - \frac{1}{2}W$   
 $R_8 = 5.6 \text{ k}\Omega - \frac{1}{2}W$   
 $R_9 = 1.5 \text{ k}\Omega - \frac{1}{2}W$   
 $R_{10} = 100 \Omega - \frac{1}{2}W$   
 $B_2 = 4.5 \text{ Volt}$   
 $B_3 = 4.5 \text{ Volt}$   
 $L_5 = 150 \Omega$

# KIT No 4.



# KIT No 4.

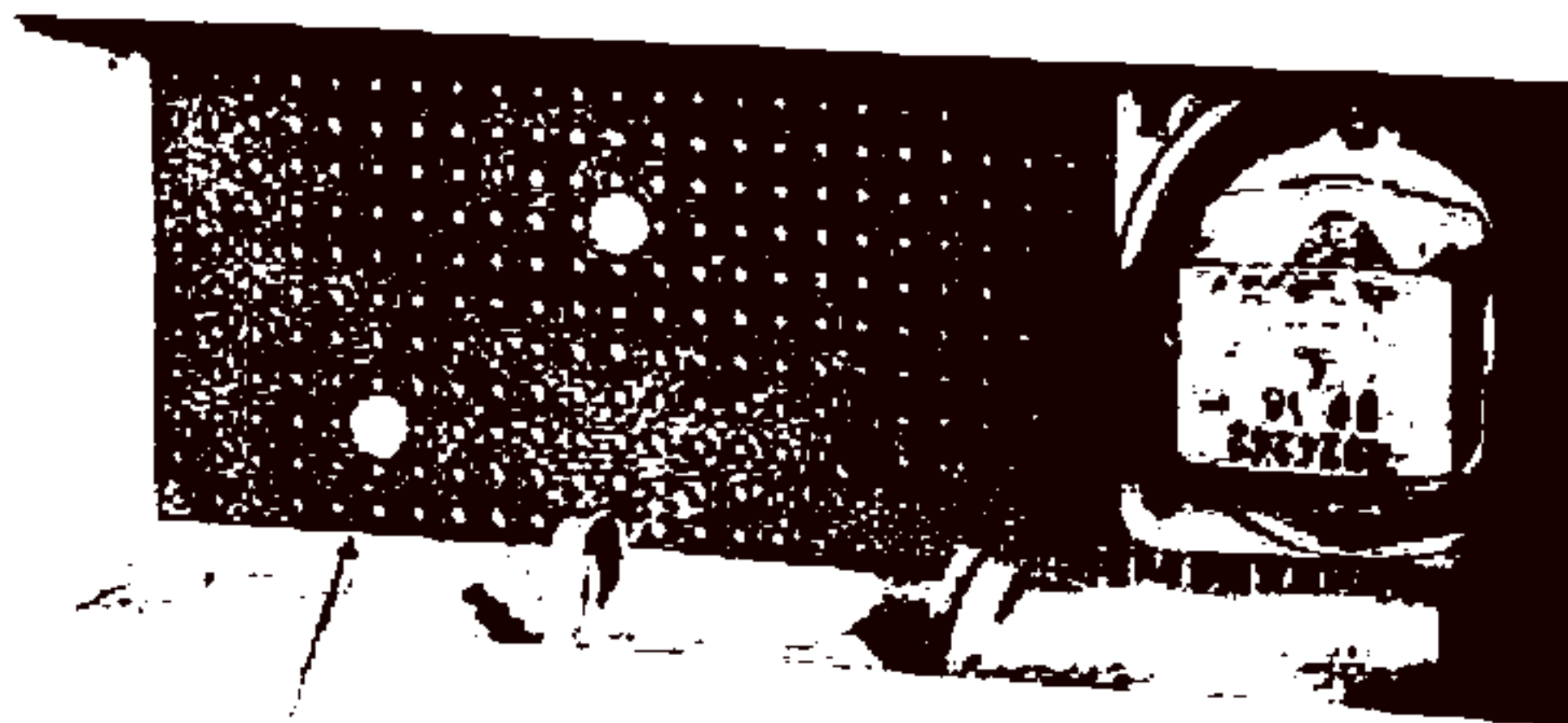


81+82-81



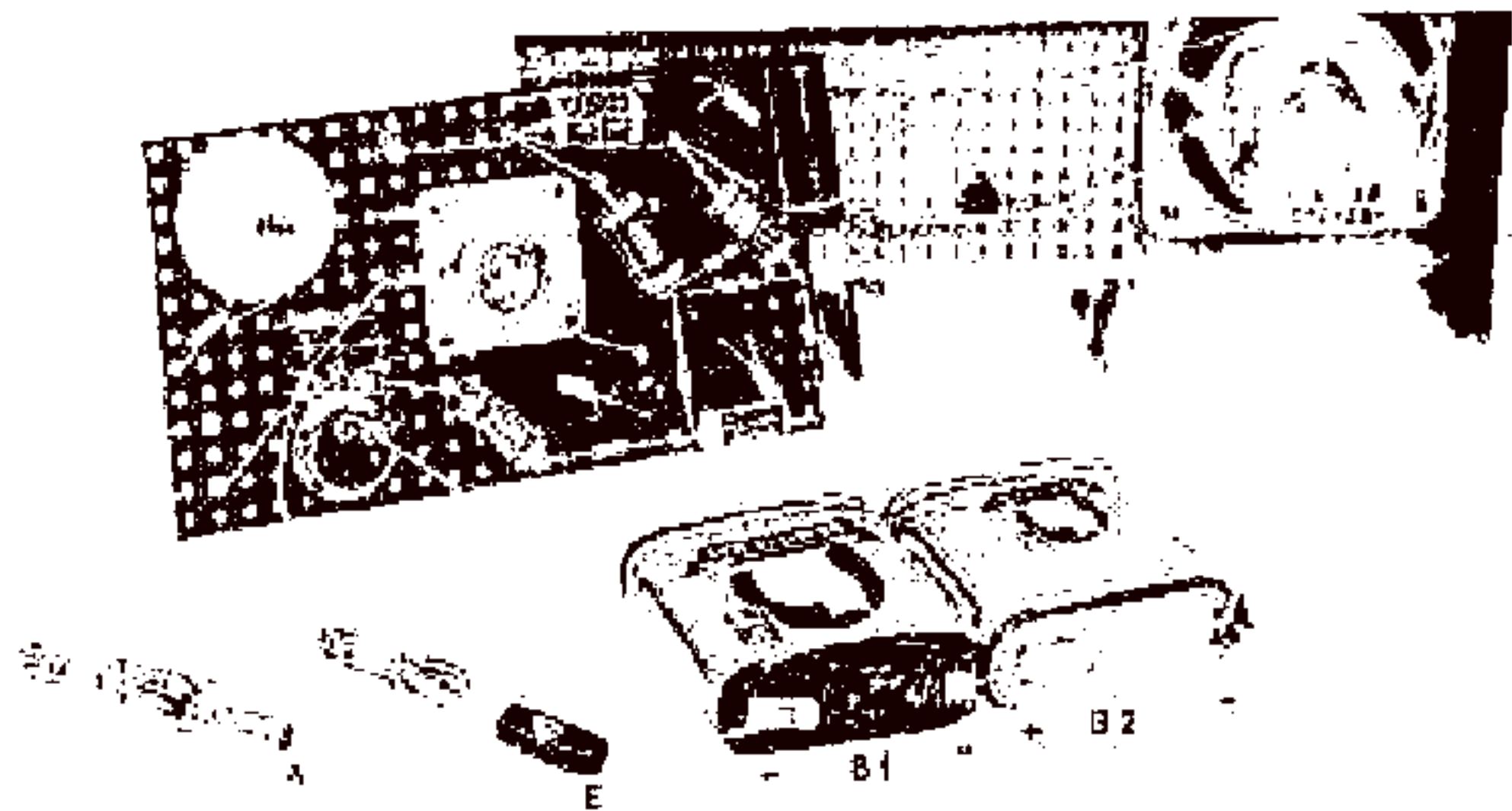
KIT No 4.

KA 2



PF

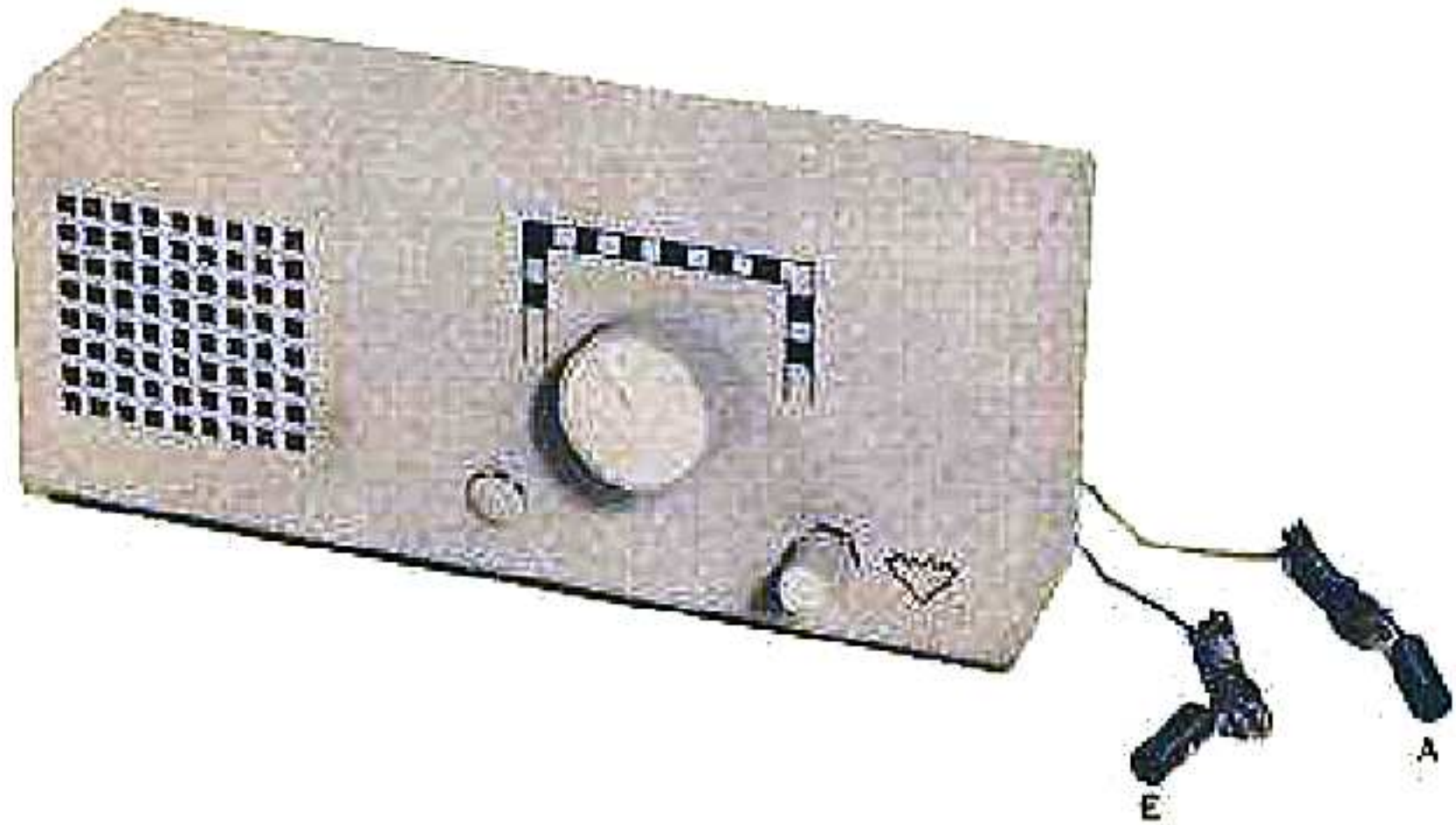






KIT No 4 .





# Step by Step 4

