

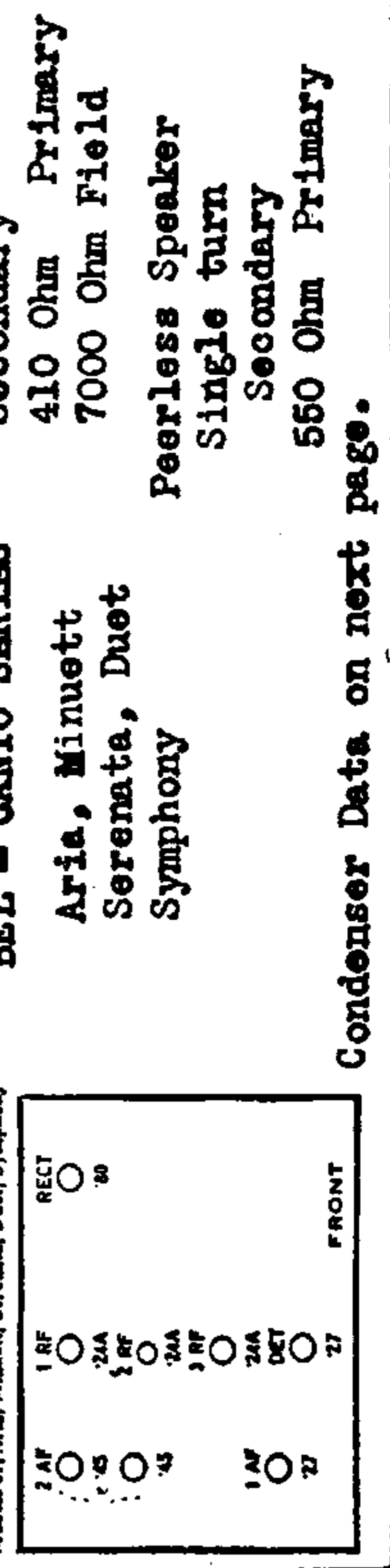
AMRAD—Model 81
 Line Voltage 120—Set on 120 Volt Tap—Volume Control Position Full On
 Note: To get the 10.5 V. reading (4-8) the hum control potentiometer must be turned to ground side.

CONDENSERS IN BLOCK C. 1, 5, 7, 9, 4, 5, 8.
 RCA Speaker
 0.8 Ohm
 Secondary
 410 Ohm Primary
 7000 Ohm Field

BEL - CANTO SERIES
 Aria, Minuett
 Serenata, Duet
 Symphony
 Peerless Speaker
 Single turn
 Secondary
 550 Ohm Primary

CONDENSERS IN BLOCK C. 1, 5, 7, 9, 4, 5, 8.
 RCA Speaker
 0.8 Ohm
 Secondary
 410 Ohm Primary
 7000 Ohm Field

TUBE NO. IN ORDER	TYPE OF TUBE	POSITION OF TUBE IN SET	TIME OUT		VOLTAGE		RESISTANCE		CAPACITANCE		INDUCTIVE REACTANCE		PLATE CURRENT		PLATE VOLTAGE	
			MIN.	MAX.	MIN.	MAX.	MIN.	MAX.	MIN.	MAX.	MIN.	MAX.	MIN.	MAX.	MIN.	MAX.
2A4	2A4	1ST AF	2.38	190	2.25	180	1.5	4	7.5	3.5	80	1.1	1.1	1.1	1.1	1.1
2A4	2A4	2ND AF	2.38	190	2.25	180	1.5	4	7.5	3.5	80	1.1	1.1	1.1	1.1	1.1
2A4	2A4	3RD AF	2.38	190	2.25	180	1.5	4	7.5	3.5	80	1.1	1.1	1.1	1.1	1.1
2A7	2A7	DET.	2.38	140	2.25	50	0	1.5	1.6	1.1	1.1	1.1	1.1	1.1	1.1	1.1
2A7	2A7	1ST AF	2.38	190	2.25	180	10.5	4.1	6.2	1.1	1.1	1.1	1.1	1.1	1.1	1.1
2A4	2A4	2ND AF	2.38	300	2.25	300	50	80	38	1.1	1.1	1.1	1.1	1.1	1.1	1.1
2A4	2A4	3RD AF	2.38	300	2.25	250	50	80	38	1.1	1.1	1.1	1.1	1.1	1.1	1.1
2A5	2A5	DET.	2.38	110	2.25	110	0	1.1	1.1	1.1	1.1	1.1	1.1	1.1	1.1	1.1



Ned. Ver. v. Historie v/d Radio



Condenser Data on next page.

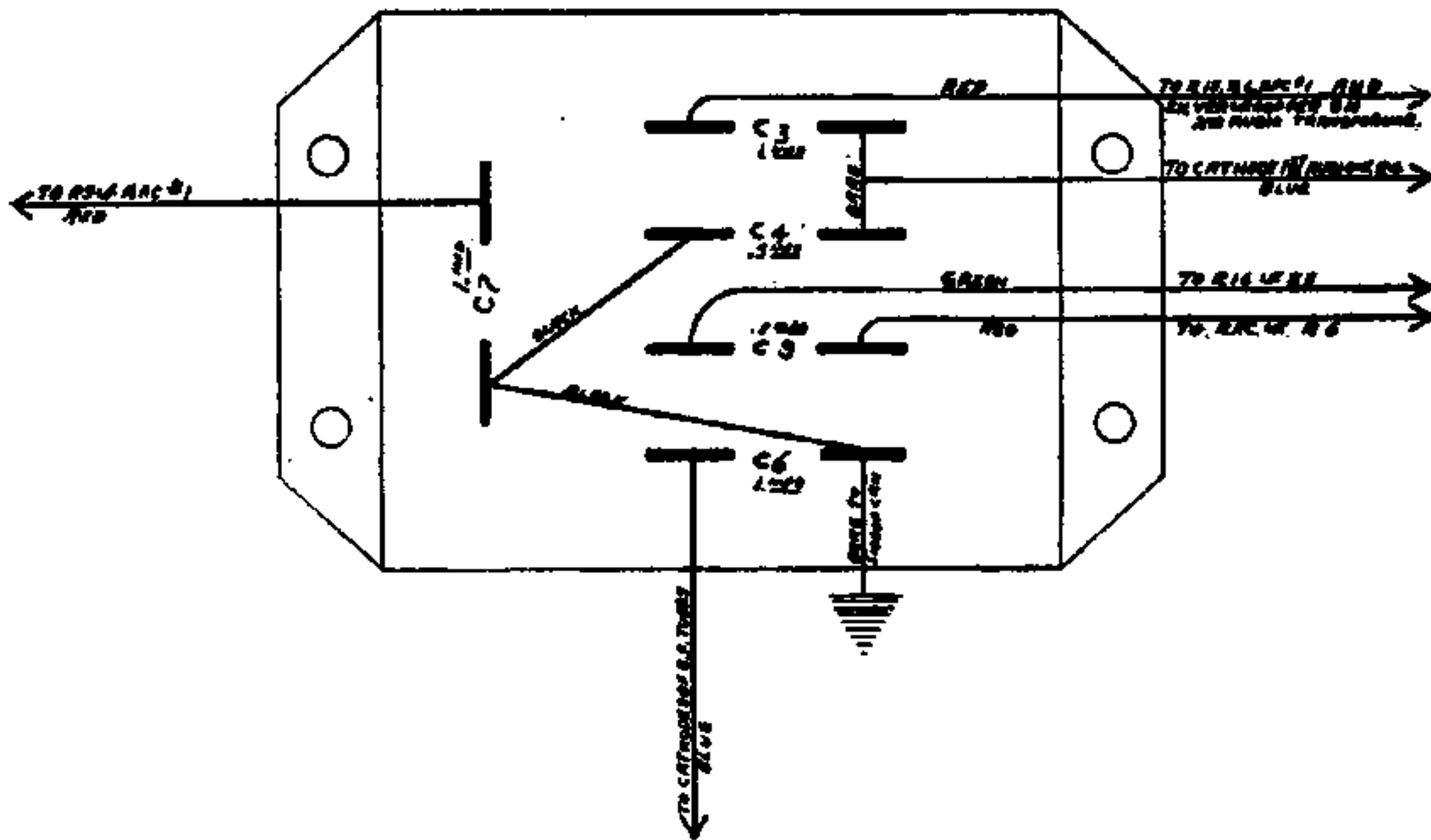
VALVOLE

			Tensioni dei filamenti	Tensioni negative di griglia	Tensioni di placca	Tensioni delle griglie sehermo	Corrente di placca
			Volta c.a.	Volta c.c.	Volta c.c.	Volta c.c.	m. A.
1. ^a	A. F.	' 24	2,25	1,5	180	80	4
2. ^a	A. F.	' 24	2,25	1,5	180	80	4
3. ^a	A. F.	' 24	2,25	1,5	180	86	4
Rivelatr.		' 27	2,25	0	30	—	1,5
1. ^a	B. F.	' 27	2,25	10,5	160	—	4,1
Finale		' 45	2,25	50,—	250	—	28,—
«		' 45	2,25	50,—	250	—	28,—
Raddriz.		' 80	4,65	—	—	—	110,—

Letture eseguite col regolatore d'intensità al massimo.

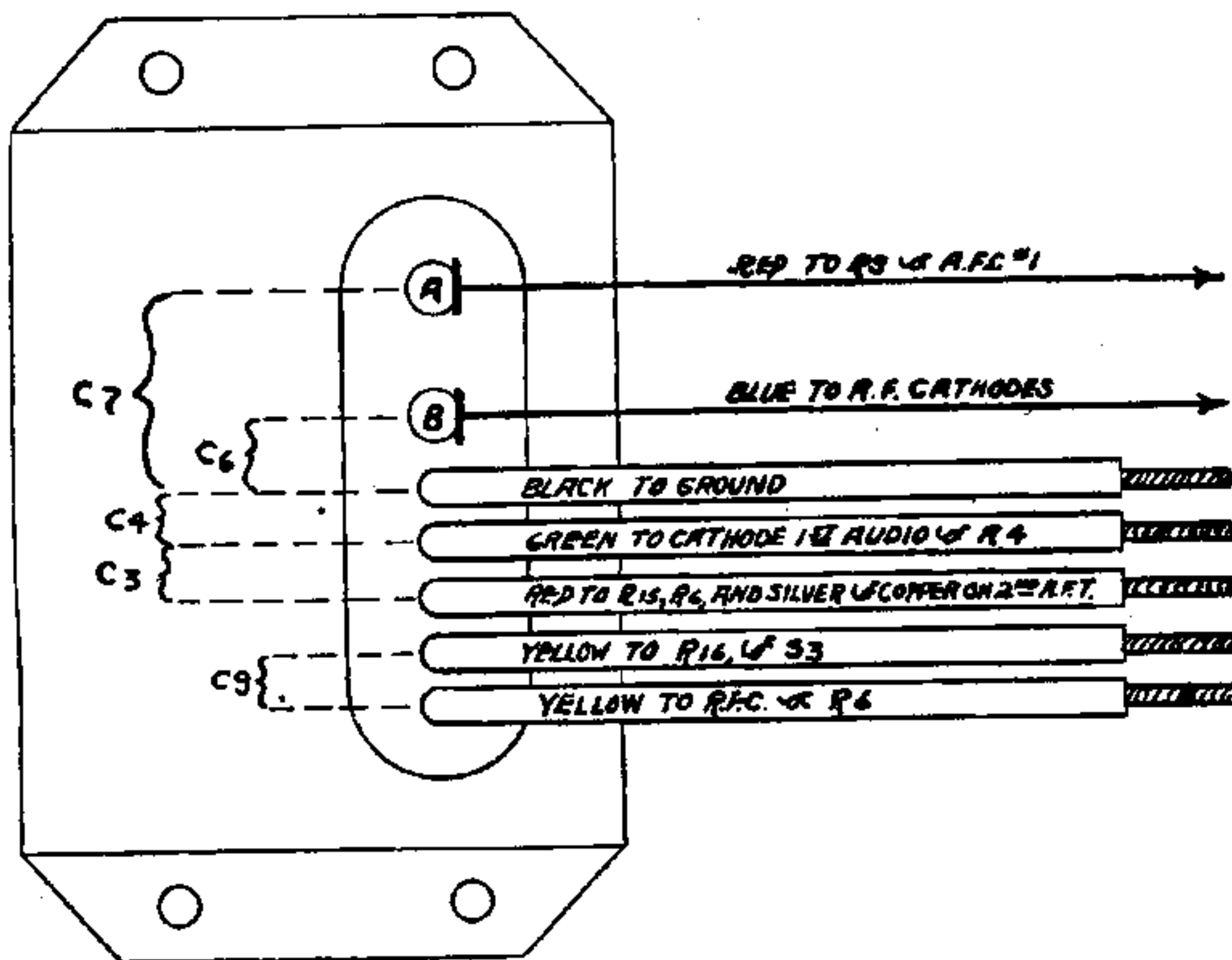
MODEL Bel-Canto 81
Condenser Data

AMRAD CORPORATION



BY-PASS BLOCK CONDENSER, NO. 8113

"Lug Terminal" Style. This block contains Fixed Condensers, C3, C4, C6, C7, C9. The different units are indicated, with their connections to their respective circuits.



BY-PASS BLOCK CONDENSER, NO. 8113

"Wire Terminal" Style. This block contains the same units as does the No. 8113 "Lug Terminal" Style. To test for capacity, opens or shorts, it is necessary to disconnect at least one terminal of the unit from the circuit.